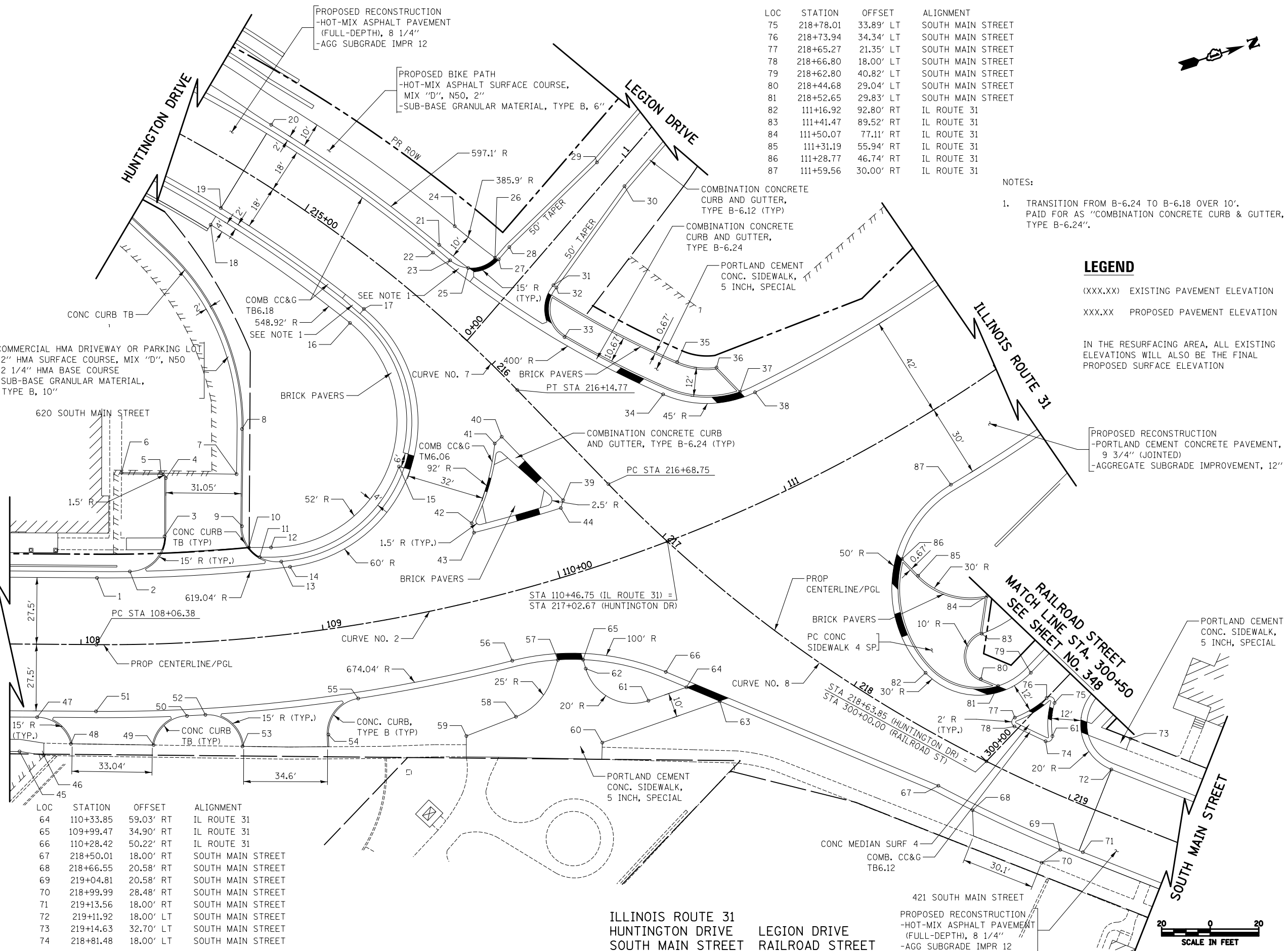


LOC	STATION	OFFSET	ALIGNMENT
1	108+06.38	27.50' LT	IL ROUTE 31
2	108+20.58	30.08' LT	IL ROUTE 31
3	108+36.14	44.17' LT	IL ROUTE 31
4	108+37.79	68.15' LT	IL ROUTE 31
5	108+35.67	70.23' LT	IL ROUTE 31
6	108+17.39	70.84' LT	IL ROUTE 31
7	108+70.37	67.81' LT	IL ROUTE 31
8	108+74.90	86.12' LT	IL ROUTE 31
9	108+70.66	46.26' LT	IL ROUTE 31
10	108+72.79	37.25' LT	IL ROUTE 31
11	108+77.08	32.85' LT	IL ROUTE 31
12	108+82.44	36.34' LT	IL ROUTE 31
13	108+86.15	30.08' LT	IL ROUTE 31
14	108+89.66	27.50' LT	IL ROUTE 31
15	109+44.42	60.98' LT	IL ROUTE 31
16	215+43.59	26.08' RT	HUNTINGTON
17	215+44.49	18.00' RT	HUNTINGTON
18	214+70.00	26.08' RT	HUNTINGTON
19	214+70.00	18.00' RT	HUNTINGTON
20	214+69.77	22.08' LT	HUNTINGTON
21	215+51.79	22.08' LT	HUNTINGTON
22	215+51.79	18.00' LT	HUNTINGTON
23	215+59.04	20.08' LT	HUNTINGTON
24	215+51.79	32.08' LT	HUNTINGTON
25	215+66.46	22.57' LT	HUNTINGTON
26	215+71.72	33.02' LT	HUNTINGTON
27	0+33.92	12.00' LT	LEGION
28	0+40.56	12.00' LT	LEGION
29	0+90.56	7.50' RT	LEGION
30	0+90.56	7.50' RT	LEGION
31	0+40.56	12.00' RT	LEGION
32	215+96.98	41.25' LT	HUNTINGTON
33	216+12.77	29.15' LT	HUNTINGTON
34	110+68.64	56.96' LT	IL ROUTE 31
35	110+80.43	66.90' LT	IL ROUTE 31
36	110+95.65	58.10' LT	IL ROUTE 31
37	111+00.49	44.91' LT	IL ROUTE 31
38	111+06.36	42.00' LT	IL ROUTE 31
39	110+11.01	30.29' LT	IL ROUTE 31
40	109+93.12	62.67' LT	IL ROUTE 31
41	109+89.22	60.78' LT	IL ROUTE 31
42	109+70.19	31.50' LT	IL ROUTE 31
43	109+70.19	27.50' LT	IL ROUTE 31
44	110+09.03	27.50' LT	IL ROUTE 31
45	107+75.00	44.25' RT	IL ROUTE 31

LOC	STATION	OFFSET	ALIGNMENT
46	107+85.00	45.74' RT	IL ROUTE 31
47	107+82.17	30.08' RT	IL ROUTE 31
48	107+96.15	40.93' RT	IL ROUTE 31
49	108+28.78	41.61' RT	IL ROUTE 31
50	108+42.09	30.08' RT	IL ROUTE 31
51	108+06.38	27.50' RT	IL ROUTE 31
52	108+49.48	30.08' RT	IL ROUTE 31
53	108+63.04	44.12' RT	IL ROUTE 31
54	108+96.49	43.04' RT	IL ROUTE 31
55	109+09.99	30.08' RT	IL ROUTE 31
56	109+72.54	27.50' RT	IL ROUTE 31
57	109+89.96	32.06' RT	IL ROUTE 31
58	109+68.61	50.26' RT	IL ROUTE 31
59	109+48.52	53.37' RT	IL ROUTE 31
60	109+97.44	69.92' RT	IL ROUTE 31
61	110+18.64	59.12' RT	IL ROUTE 31
62	109+99.45	38.73' RT	IL ROUTE 31
63	110+43.80	69.18' RT	IL ROUTE 31
64	110+33.85	59.03' RT	IL ROUTE 31
65	109+99.47	34.90' RT	IL ROUTE 31
66	110+28.42	50.22' RT	IL ROUTE 31
67	218+50.01	18.00' RT	SOUTH MAIN STREET
68	218+66.55	20.58' RT	SOUTH MAIN STREET
69	219+04.81	20.58' RT	SOUTH MAIN STREET
70	218+99.99	28.48' RT	SOUTH MAIN STREET
71	219+13.56	18.00' RT	SOUTH MAIN STREET
72	219+11.92	18.00' LT	SOUTH MAIN STREET
73	219+14.63	32.70' LT	SOUTH MAIN STREET
74	218+81.48	18.00' LT	SOUTH MAIN STREET



LOC	STATION	OFFSET	ALIGNMENT
75	218+78.01	33.89' LT	SOUTH MAIN STREET
76	218+73.94	34.34' LT	SOUTH MAIN STREET
77	218+65.27	21.35' LT	SOUTH MAIN STREET
78	218+66.80	18.00' LT	SOUTH MAIN STREET
79	218+62.80	40.82' LT	SOUTH MAIN STREET
80	218+44.68	29.04' LT	SOUTH MAIN STREET
81	218+52.65	29.83' LT	SOUTH MAIN STREET
82	111+16.92	92.80' RT	IL ROUTE 31
83	111+41.47	89.52' RT	IL ROUTE 31
84	111+50.07	77.11' RT	IL ROUTE 31
85	111+31.19	55.94' RT	IL ROUTE 31
86	111+28.77	46.74' RT	IL ROUTE 31
87	111+59.56	30.00' RT	IL ROUTE 31

NOTES:
 1. TRANSITION FROM B-6.24 TO B-6.18 OVER 10'. PAID FOR AS "COMBINATION CONCRETE CURB & GUTTER, TYPE B-6.24".

LEGEND
 (XXX.XX) EXISTING PAVEMENT ELEVATION
 XXX.XX PROPOSED PAVEMENT ELEVATION
 IN THE RESURFACING AREA, ALL EXISTING ELEVATIONS WILL ALSO BE THE FINAL PROPOSED SURFACE ELEVATION

PROPOSED RECONSTRUCTION
 -PORTLAND CEMENT CONCRETE PAVEMENT, 9 3/4" (JOINTED)
 -AGGREGATE SUBGRADE IMPROVEMENT, 12"

ILLINOIS ROUTE 31
 HUNTINGTON DRIVE
 SOUTH MAIN STREET

LEGION DRIVE
 RAILROAD STREET

PROPOSED RECONSTRUCTION
 -HOT-MIX ASPHALT PAVEMENT (FULL-DEPTH), 8 1/4"
 -AGG SUBGRADE IMPR 12

FILE NAME =	USER NAME = akw	DESIGNED - CTB	REVISED -
...\\D160F72-sht-details-03-intersection.dgn		DRAWN - CTB	REVISED -
		CHECKED - GAB	REVISED -
		DATE - 5/3/2012	REVISED -

STATE OF ILLINOIS
 DEPARTMENT OF TRANSPORTATION

INTERSECTION DETAILS	
SCALE: 1" = 20'	SHEET NO. 3 OF 9 SHEETS
STA.	TO STA.

O.R. RTE.	SECTION	COUNTY	TOTAL SHEETS	SHEET NO.
0003	18A-2	MCHENRY	825	347
CONTRACT NO. 60F72				
FED. ROAD DIST. NO. 1 ILLINOIS FED. AID PROJECT				