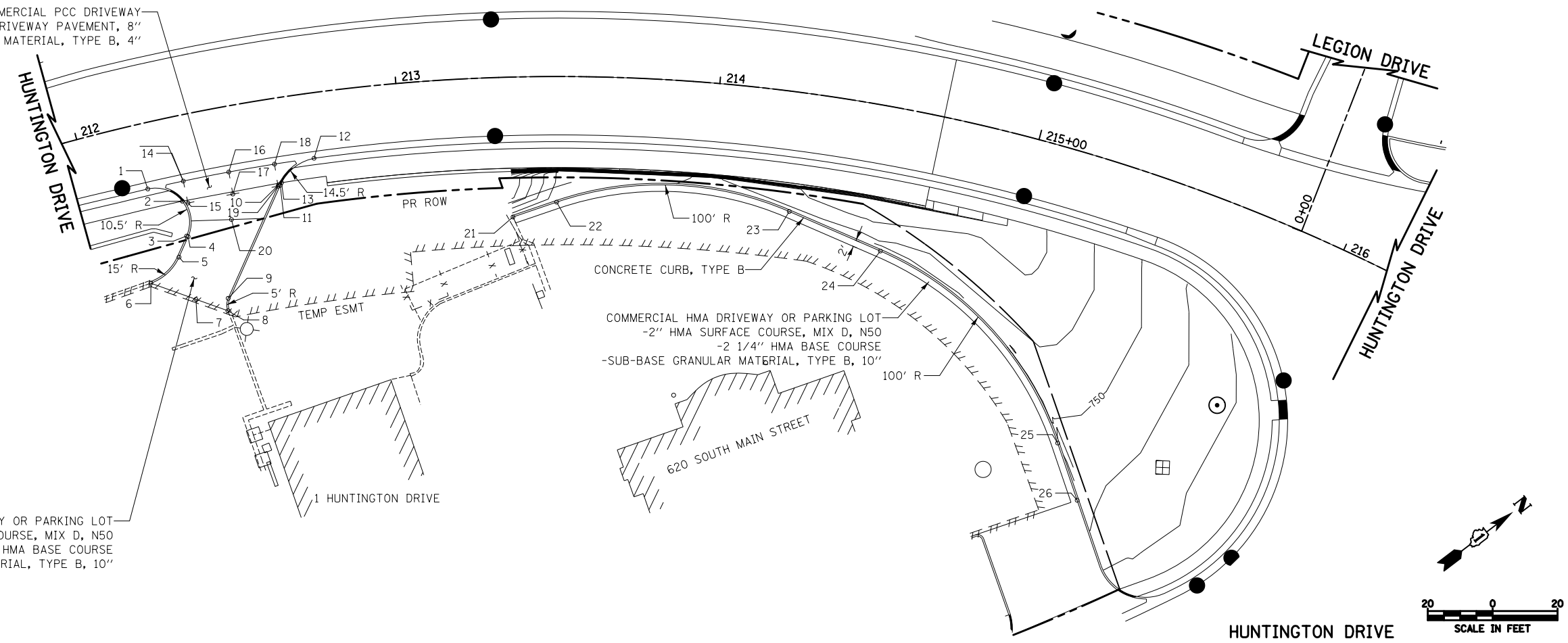


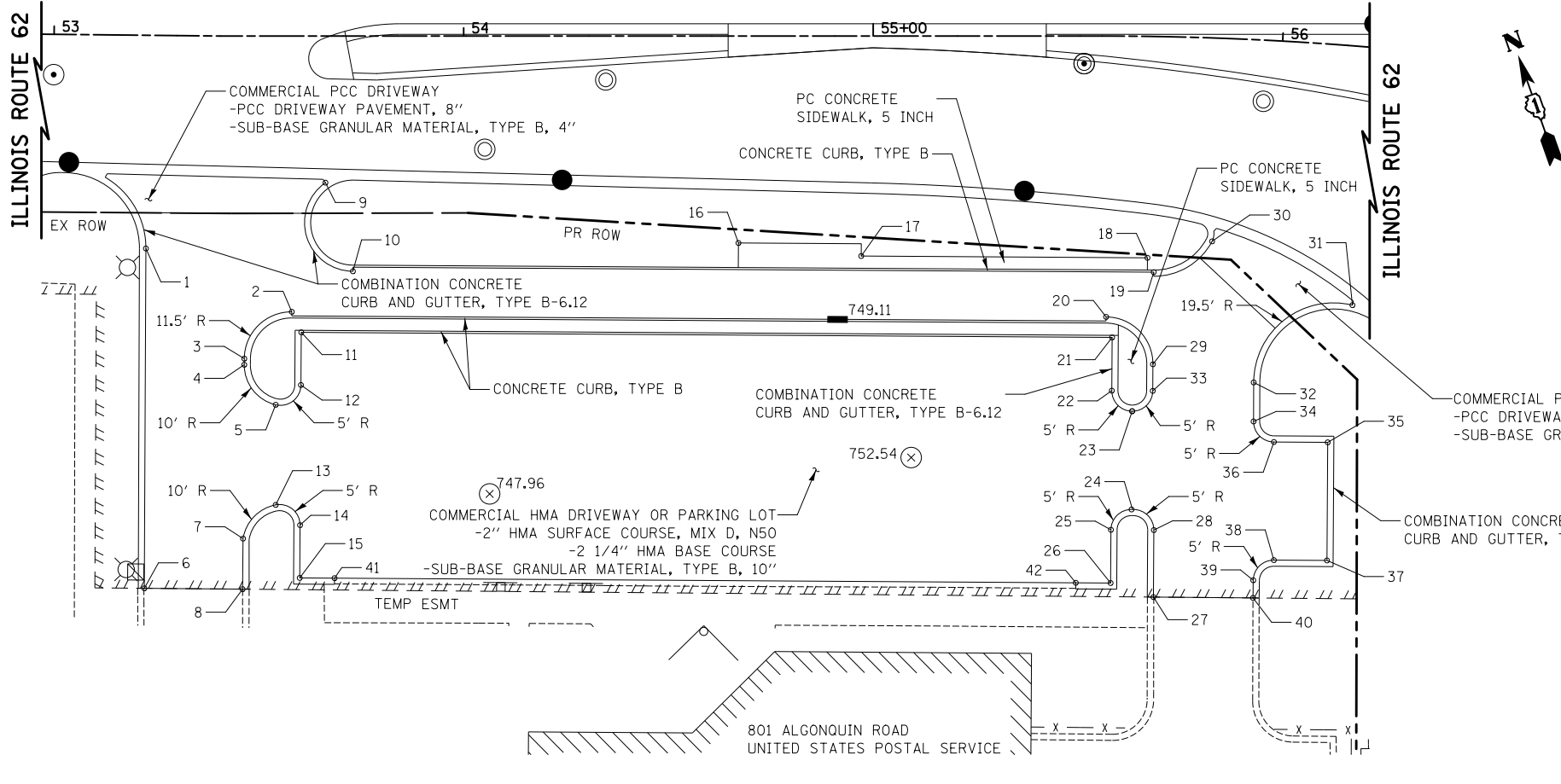
LOC	STATION	OFFSET	ELEVATION	DESC.
1	212+17.87	20.08' RT	-	BC
2	212+27.85	26.08' RT	-	BC/WALK
3	212+26.81	36.86' RT	-	BC
4	212+27.24	37.15' RT	775.68	EP
5	212+22.83	42.71' RT	774.62	EP
6	212+11.66	48.54' RT	(772.88)	EP
7	212+25.31	56.54' RT	(772.65)	EP
8	212+35.23	62.01' RT	(772.50)	EP
9	212+36.18	58.28' RT	772.83	EP
10	212+59.43	26.55' RT	775.37	EP
11	212+59.86	26.83' RT	-	BC
12	212+71.89	20.08' RT	-	BC
13	212+60.41	26.08' RT	-	BC/WALK
14	212+29.49	20.08' RT	778.53	SPOT EL
15	212+29.49	27.00' RT	778.39	SPOT EL
16	212+44.30	20.08' RT	777.04	SPOT EL
17	212+44.30	27.00' RT	776.90	SPOT EL
18	212+59.12	20.08' RT	775.55	SPOT EL
19	212+59.12	27.00' RT	775.41	SPOT EL
20	212+42.31	34.64' RT	775.93	SPOT EL
21	213+35.04	43.12' RT	750.72	EP
22	213+49.59	38.72' RT	750.70	EP
23	214+26.42	36.86' RT	750.10	EP
24	214+58.35	44.40' RT	750.11	EP
25	215+35.03	87.98' RT	749.33	EP
26	215+48.77	102.67' RT	749.33	EP

COMMERCIAL HMA DRIVEWAY OR PARKING LOT
 -2" HMA SURFACE COURSE, MIX D, N50
 -2 1/4" HMA BASE COURSE
 -SUB-BASE GRANULAR MATERIAL, TYPE B, 10"



LOC	STATION	OFFSET	ELEVATION
1	53+22.95	52.09' RT	752.45
2	53+58.03	67.37' RT	751.44
3	53+46.43	78.80' RT	750.75
4	53+46.43	80.29' RT	750.70
5	53+54.10	90.07' RT	750.36
6	53+23.43	135.10' RT	(750.05)
7	53+46.13	122.77' RT	750.18
8	53+47.43	135.10' RT	(750.54)
9	53+66.25	35.82' RT	753.65
10	53+72.95	57.46' RT	751.60
11	53+60.35	72.38' RT	750.40
12	53+60.27	85.24' RT	750.14
13	53+54.10	114.53' RT	749.80
14	53+60.05	119.47' RT	749.65
15	53+59.98	132.37' RT	(749.65)
16	54+67.09	50.55' RT	750.52
17	54+97.00	53.73' RT	750.15
18	55+67.79	54.09' RT	751.54
19	55+69.49	57.57' RT	751.00
20	55+56.96	68.60' RT	750.46
21	55+58.60	73.61' RT	749.46
22	55+58.55	86.60' RT	749.33
23	55+64.20	91.60' RT	749.40
24	55+64.30	115.61' RT	749.55
25	55+58.43	120.61' RT	748.47
26	55+57.94	133.61' RT	(748.60)
27	55+71.06	136.93' RT	(749.32)
28	55+70.81	120.56' RT	748.62
29	55+69.70	80.07' RT	749.54
30	55+84.56	49.66' RT	752.05

LOC	STATION	OFFSET	ELEVATION
31	56+22.43	63.15' RT	752.22
32	56+97.33	83.64' RT	750.00
33	55+69.80	86.57' RT	749.47
34	56+97.87	93.16' RT	749.78
35	56+18.80	97.05' RT	749.91
36	56+03.84	97.89' RT	749.78
37	56+21.34	125.81' RT	749.50
38	56+05.91	126.69' RT	749.85
39	56+00.25	131.90' RT	749.93
40	56+00.47	136.20' RT	(749.95)
41	53+68.47	132.43' RT	(749.40)
42	55+49.47	133.56' RT	(748.59)



ILLINOIS ROUTE 62

FILE NAME = ... \D160F72-sht-details-11-drives.dgn	USER NAME = ctb	DESIGNED - CTB	REVISED -
		DRAWN - CTB	REVISED -
		CHECKED - GAB	REVISED -
		DATE - 5/3/2012	REVISED -

STATE OF ILLINOIS
 DEPARTMENT OF TRANSPORTATION

DRIVEWAY DETAILS

SCALE: 1" = 20' SHEET NO. 2 OF 2 SHEETS STA. TO STA.

O.R. RTE.	SECTION	COUNTY	TOTAL SHEETS	SHEET NO.
0003	18A-2	MCHENRY	825	355
CONTRACT NO. 60F72				
FED. ROAD DIST. NO. 1 ILLINOIS FED. AID PROJECT				