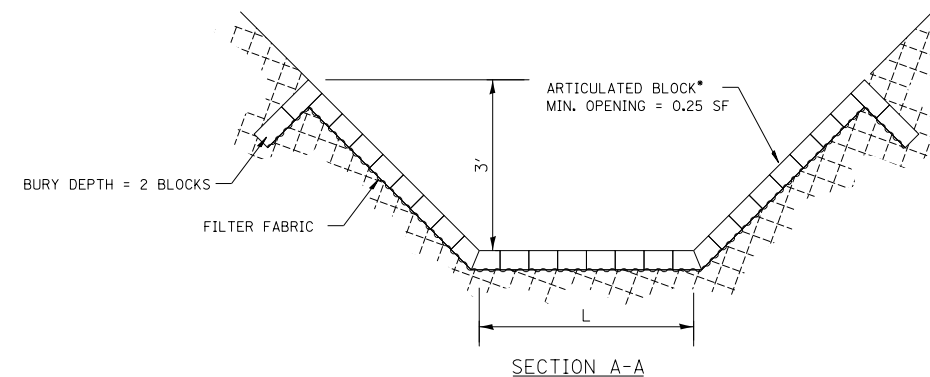
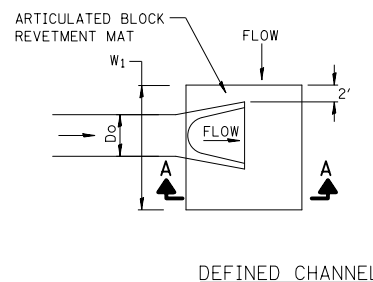
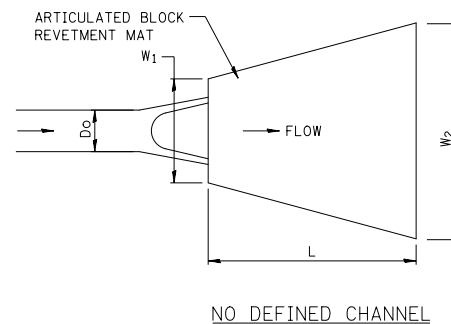


STRUCTURES	A	ELBOW	B	ELBOW	C	END STRUCTURE	THRUST BLOCK DIM.	CONC. ANCHORS
24 TO 25	1.75'	17"	62.0'	17"	2.0'	MH	48" X 48" X 48"	3
330 TO 331	0.25'	22"	20.6'	22"	0.25'	FES	27" X 27" X 27"	1
332 TO 343	0.36'	18"	60.0'	18"	8.0'	FES	24" X 24" X 24"	2
333 TO 338	0.48'	21"	32.7'	21"	0.48'	FES	24" X 24" X 24"	1
566 TO 568	1.7'	19"	73.0'	19"	1.7'	FES	24" X 24" X 24"	3

- NOTES:**
- PIPE SECTIONS A & C ARE TO BE CONSTRUCTED AT A 0.30% SLOPE
  - EACH R C PIPE ELBOW IS TO BE CONSTRUCTED FROM 8 LINEAR FEET OF PIPE SPECIFIED ON DRAINAGE AND UTILITIES PLAN

**SLOPE DRAIN DETAIL**

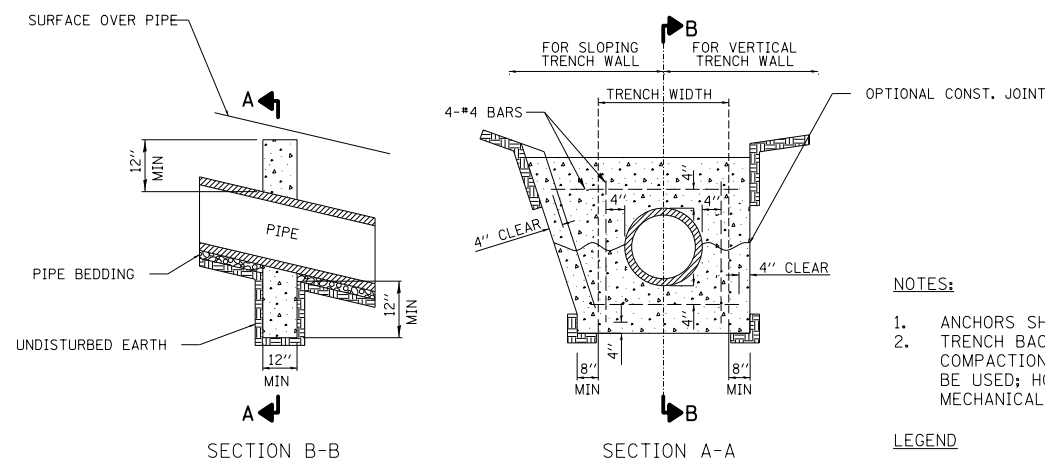
NOT TO SCALE



**ARTICULATED BLOCK REVETMENT MAT DETAIL**

NOT TO SCALE

STRUCTURE NUMBER	PIPE SIZE (IN)	DEFINED CHANNEL	W1 (FEET)	W2 (FEET)	L (FEET)	QUANTITY (SQ. YD.)
331	12	YES	8	---	4	4
571	12	NO	4	9	6	5
557	12	NO	4	9	6	5
342	12	YES	8	---	4	4
338	12	YES	8	---	4	4
343	12	YES	8	---	4	4
355	12	YES	8	---	4	4
561	30	NO	9	17	15	22
145	12	YES	8	---	4	4
568	12	YES	8	---	4	4
536	18	NO	6	11	9	9
324	12	YES	8	---	4	4
318	12	YES	8	---	4	4
315	12	YES	8	---	4	4
309	12	YES	8	---	4	4
303	24	NO	8	13	12	14
576	12	YES	4	9	6	5
139	12	YES	8	---	4	4
137	12	YES	8	---	4	4
105	12	YES	8	---	4	4
103	12	YES	8	---	4	4
91	12	YES	8	---	4	4
94	12	YES	8	---	4	4
99	12	YES	8	---	4	4
101	12	YES	8	---	4	4
141	12	YES	8	---	4	4
340	12	YES	8	---	4	4
143	12	YES	8	---	4	4
341	12	YES	8	---	4	4
79	12	NO	4	9	6	4
76	12	NO	4	9	6	4
73	12	NO	4	9	6	4
70	12	NO	4	9	6	4
83	12	YES	8	---	4	4
86	12	YES	8	---	4	4
89	12	YES	8	---	4	4



- NOTES:**
- ANCHORS SHALL BE CLASS SI CONCRETE.
  - TRENCH BACKFILL SHALL BE CONSOLIDATED BY MECHANICAL COMPACTION. IN LIEU OF MECHANICAL COMPACTION, SOIL CEMENT MAY BE USED; HOWEVER, THE TOP 12" OF BACK FILL SHALL BE NATIVE SOIL, MECHANICALLY COMPACTED.

**LEGEND**  
 CLASS SI CONCRETE

**CONCRETE ANCHORS DETAIL**

NOT TO SCALE

FILE NAME =	USER NAME = okw	DESIGNED - DTE	REVISED -
...\\D160F72-sht-details-15-drainage and erosion.dgn		DRAWN - DTE	REVISED -
	PLOT SCALE = 100.0000' / 1in.	CHECKED - GAB	REVISED -
	PLOT DATE = 5/2/2012	DATE - 5/3/2012	REVISED -

STATE OF ILLINOIS  
 DEPARTMENT OF TRANSPORTATION

DETAILS

SCALE: N.T.S. SHEET NO. 3 OF 3 SHEETS STA. TO STA.

O.R. RTE.	SECTION	COUNTY	TOTAL SHEETS	SHEET NO.
0003	18A-2	MCHENRY	825	359
CONTRACT NO. 60F72				
FED. ROAD DIST. NO. 1 ILLINOIS FED. AID PROJECT				