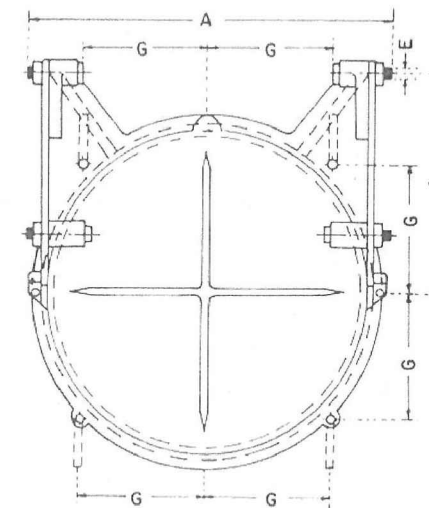
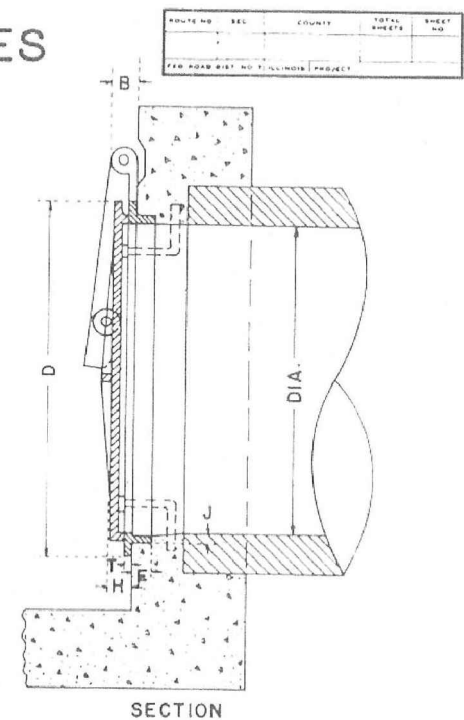


**ACCESS GATE, DOUBLE, 30 FOOT**  
NOT TO SCALE

## AUTOMATIC FLAP GATES



FRONT ELEVATION



SECTION

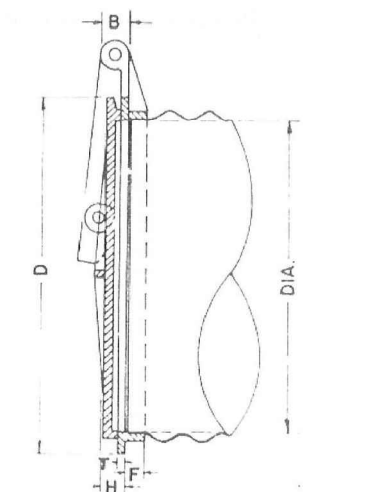
It is intended that the Automatic Flap Gates shall be a commercial product produced by a reliable manufacturer. The gate may be made of cast iron, cast steel or other suitable materials. The design may differ from the drawing if it will work in a satisfactory, trouble free manner and will withstand the water pressure at the installation location. The gate shall be approved by the Engineer.

The size of Automatic Flap Gates shall refer to the diameter of the outlet pipe or opening.

This work shall be paid for at the contract unit price each for Automatic Flap Gates of the size specified and shall include all materials and complete installation.

TABLE OF DIMENSIONS

DIAM	A	B	C	D	E	F	G	H	J	T
8	10 <sup>3</sup> / <sub>4</sub>	1 <sup>3</sup> / <sub>8</sub>	5 <sup>11</sup> / <sub>16</sub>	10	1 <sup>2</sup> / <sub>2</sub>	1 <sup>1</sup> / <sub>8</sub>	3 <sup>9</sup> / <sub>16</sub>	1 <sup>1</sup> / <sub>4</sub>	3 <sup>3</sup> / <sub>8</sub>	3 <sup>3</sup> / <sub>8</sub>
10	12 <sup>3</sup> / <sub>4</sub>	1 <sup>3</sup> / <sub>8</sub>	7 <sup>1</sup> / <sub>8</sub>	12 <sup>1</sup> / <sub>4</sub>	1 <sup>2</sup> / <sub>2</sub>	1 <sup>1</sup> / <sub>8</sub>	4 <sup>3</sup> / <sub>8</sub>	1 <sup>2</sup> / <sub>2</sub>	1 <sup>2</sup> / <sub>2</sub>	7 <sup>7</sup> / <sub>16</sub>
12	14 <sup>3</sup> / <sub>4</sub>	1 <sup>3</sup> / <sub>8</sub>	8 <sup>1</sup> / <sub>2</sub>	14 <sup>1</sup> / <sub>2</sub>	1 <sup>2</sup> / <sub>2</sub>	1 <sup>1</sup> / <sub>8</sub>	5 <sup>1</sup> / <sub>8</sub>	1 <sup>2</sup> / <sub>2</sub>	1 <sup>2</sup> / <sub>2</sub>	1 <sup>2</sup> / <sub>2</sub>
14	17 <sup>1</sup> / <sub>4</sub>	1 <sup>3</sup> / <sub>8</sub>	9 <sup>7</sup> / <sub>8</sub>	16 <sup>3</sup> / <sub>4</sub>	1 <sup>2</sup> / <sub>2</sub>	1 <sup>1</sup> / <sub>4</sub>	5 <sup>15</sup> / <sub>16</sub>	1 <sup>2</sup> / <sub>2</sub>	1 <sup>2</sup> / <sub>2</sub>	9 <sup>9</sup> / <sub>16</sub>
15	17 <sup>3</sup> / <sub>4</sub>	1 <sup>3</sup> / <sub>8</sub>	10 <sup>5</sup> / <sub>8</sub>	17 <sup>3</sup> / <sub>4</sub>	1 <sup>2</sup> / <sub>2</sub>	1 <sup>1</sup> / <sub>4</sub>	6 <sup>1</sup> / <sub>4</sub>	1 <sup>2</sup> / <sub>2</sub>	1 <sup>2</sup> / <sub>2</sub>	9 <sup>9</sup> / <sub>16</sub>
16	19 <sup>1</sup> / <sub>4</sub>	1 <sup>3</sup> / <sub>8</sub>	11 <sup>1</sup> / <sub>4</sub>	18 <sup>3</sup> / <sub>4</sub>	1 <sup>2</sup> / <sub>2</sub>	1 <sup>1</sup> / <sub>4</sub>	6 <sup>5</sup> / <sub>8</sub>	1 <sup>2</sup> / <sub>2</sub>	1 <sup>2</sup> / <sub>2</sub>	9 <sup>9</sup> / <sub>16</sub>
18	22 <sup>1</sup> / <sub>4</sub>	2	12 <sup>5</sup> / <sub>8</sub>	21	3 <sup>3</sup> / <sub>4</sub>	1 <sup>9</sup> / <sub>16</sub>	7 <sup>7</sup> / <sub>16</sub>	1 <sup>3</sup> / <sub>4</sub>	9 <sup>9</sup> / <sub>16</sub>	9 <sup>9</sup> / <sub>16</sub>
20	24 <sup>3</sup> / <sub>4</sub>	2	14 <sup>1</sup> / <sub>8</sub>	23 <sup>3</sup> / <sub>4</sub>	3 <sup>3</sup> / <sub>4</sub>	1 <sup>3</sup> / <sub>8</sub>	8 <sup>1</sup> / <sub>4</sub>	1 <sup>3</sup> / <sub>4</sub>	5 <sup>5</sup> / <sub>8</sub>	5 <sup>5</sup> / <sub>8</sub>
21	25 <sup>1</sup> / <sub>4</sub>	2	14 <sup>7</sup> / <sub>8</sub>	24 <sup>1</sup> / <sub>4</sub>	3 <sup>3</sup> / <sub>4</sub>	1 <sup>3</sup> / <sub>8</sub>	8 <sup>9</sup> / <sub>16</sub>	1 <sup>3</sup> / <sub>4</sub>	5 <sup>5</sup> / <sub>8</sub>	5 <sup>5</sup> / <sub>8</sub>
24	28 <sup>1</sup> / <sub>4</sub>	2	17	27 <sup>1</sup> / <sub>2</sub>	3 <sup>3</sup> / <sub>4</sub>	1 <sup>1</sup> / <sub>2</sub>	9 <sup>3</sup> / <sub>4</sub>	1 <sup>3</sup> / <sub>4</sub>	5 <sup>5</sup> / <sub>8</sub>	5 <sup>5</sup> / <sub>8</sub>
30	35 <sup>1</sup> / <sub>4</sub>	2 <sup>1</sup> / <sub>2</sub>	20 <sup>1</sup> / <sub>2</sub>	34	1	1 <sup>9</sup> / <sub>16</sub>	12	2	1 <sup>1</sup> / <sub>16</sub>	5 <sup>5</sup> / <sub>8</sub>
36	41 <sup>1</sup> / <sub>2</sub>	2 <sup>1</sup> / <sub>2</sub>	25	40 <sup>7</sup> / <sub>8</sub>	1	2 <sup>1</sup> / <sub>16</sub>	14 <sup>7</sup> / <sub>16</sub>	2 <sup>1</sup> / <sub>4</sub>	1 <sup>1</sup> / <sub>8</sub>	11 <sup>11</sup> / <sub>16</sub>
42	47 <sup>1</sup> / <sub>2</sub>	2 <sup>1</sup> / <sub>2</sub>	29 <sup>3</sup> / <sub>4</sub>	47	1	2 <sup>5</sup> / <sub>16</sub>	16 <sup>5</sup> / <sub>8</sub>	2 <sup>1</sup> / <sub>4</sub>	1 <sup>1</sup> / <sub>8</sub>	3 <sup>3</sup> / <sub>4</sub>
48	53 <sup>1</sup> / <sub>2</sub>	2 <sup>1</sup> / <sub>2</sub>	34	54	1	2 <sup>3</sup> / <sub>4</sub>	19 <sup>1</sup> / <sub>16</sub>	2 <sup>1</sup> / <sub>4</sub>	1 <sup>3</sup> / <sub>8</sub>	3 <sup>3</sup> / <sub>4</sub>
54	60 <sup>3</sup> / <sub>4</sub>	2 <sup>1</sup> / <sub>2</sub>	38	62 <sup>1</sup> / <sub>4</sub>	1 <sup>1</sup> / <sub>4</sub>	2 <sup>3</sup> / <sub>4</sub>	22	3	1 <sup>1</sup> / <sub>2</sub>	7 <sup>7</sup> / <sub>8</sub>
60	67	2 <sup>1</sup> / <sub>2</sub>	42	68 <sup>1</sup> / <sub>2</sub>	1 <sup>1</sup> / <sub>4</sub>	2 <sup>3</sup> / <sub>4</sub>	24 <sup>1</sup> / <sub>4</sub>	3	1 <sup>1</sup> / <sub>2</sub>	15 <sup>15</sup> / <sub>16</sub>
66	73 <sup>3</sup> / <sub>8</sub>	2 <sup>1</sup> / <sub>2</sub>	47	75	1 <sup>1</sup> / <sub>4</sub>	2 <sup>7</sup> / <sub>8</sub>	26 <sup>1</sup> / <sub>2</sub>	3	1 <sup>1</sup> / <sub>2</sub>	1
72	79	2 <sup>1</sup> / <sub>2</sub>	51	82	1 <sup>1</sup> / <sub>4</sub>	3	29	3	1 <sup>1</sup> / <sub>2</sub>	1
78	86	2 <sup>1</sup> / <sub>2</sub>	55 <sup>1</sup> / <sub>4</sub>	88 <sup>3</sup> / <sub>4</sub>	1 <sup>1</sup> / <sub>4</sub>	3 <sup>1</sup> / <sub>2</sub>	31 <sup>3</sup> / <sub>8</sub>	3	1 <sup>5</sup> / <sub>8</sub>	1 <sup>1</sup> / <sub>8</sub>
84	92 <sup>1</sup> / <sub>2</sub>	3 <sup>1</sup> / <sub>2</sub>	59 <sup>1</sup> / <sub>2</sub>	95 <sup>1</sup> / <sub>2</sub>	1 <sup>1</sup> / <sub>2</sub>	3 <sup>1</sup> / <sub>2</sub>	33 <sup>3</sup> / <sub>4</sub>	3	1 <sup>3</sup> / <sub>4</sub>	1 <sup>1</sup> / <sub>4</sub>



SECTION SHOWING METHOD OF APPLICATION TO CORRUGATED METAL PIPE

DISTRICT NO. 2 DIXON  
DRAWN H. P. SMITH DATE 6-68  
CHECKED SCALE

FILE NAME =	USER NAME = okw	DESIGNED - DTE	REVISED -
...\\D160F72-sht-details-16-access gate.dgn		DRAWN - DTE	REVISED -
	PLOT SCALE = 100.0000' / in.	CHECKED - GAB	REVISED -
	PLOT DATE = 5/2/2012	DATE - 5/3/2012	REVISED -

STATE OF ILLINOIS  
DEPARTMENT OF TRANSPORTATION

SCALE: N.T.S.				SHEET NO. 1 OF 1 SHEETS				STA. TO STA.			
---------------	--	--	--	-------------------------	--	--	--	--------------	--	--	--

O.R. RTE.	SECTION	COUNTY	TOTAL SHEETS	SHEET NO.
0003	18A-2	MCHENRY	825	360
CONTRACT NO. 60F72				
FED. ROAD DIST. NO. 1 ILLINOIS FED. AID PROJECT				