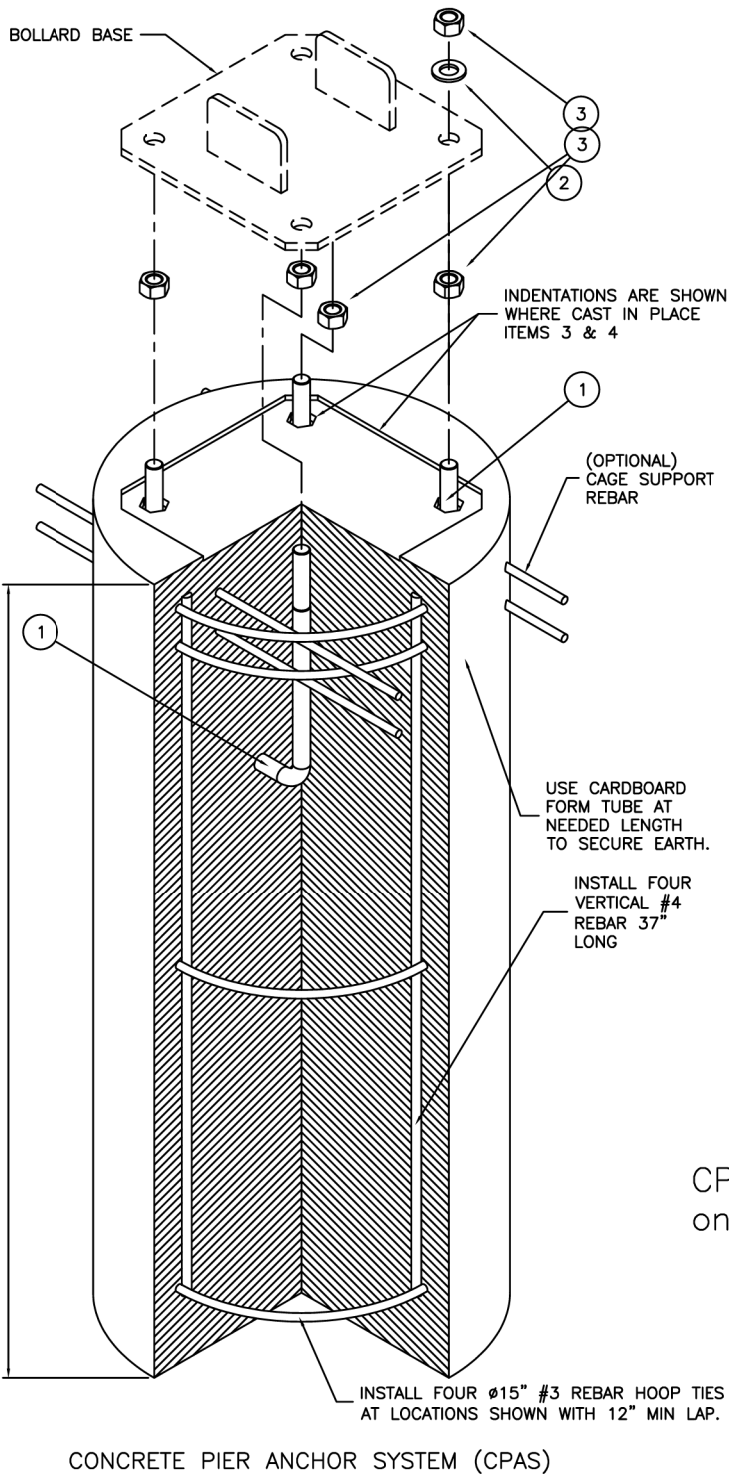


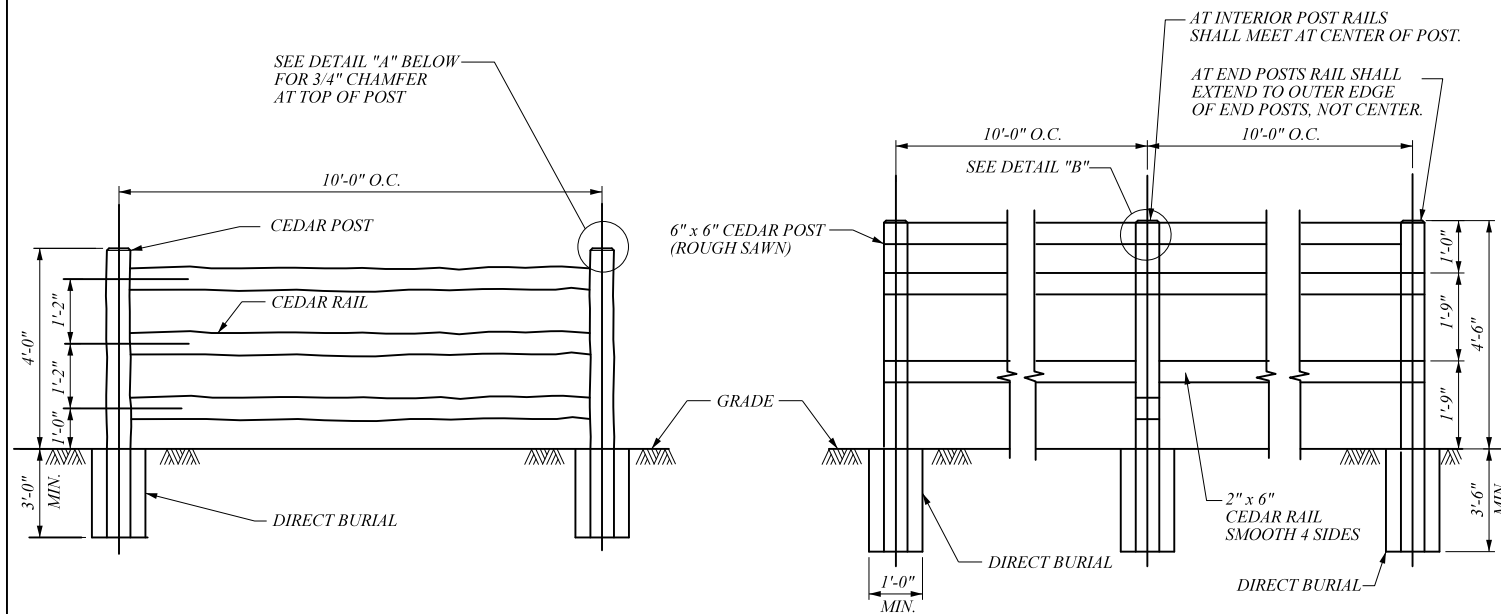
BILL OF MATERIAL		
ITEM PART #	DESCRIPTION	QTY.
* 9001	CPAS KIT - INCLUDES THE FOLLOWING PART NUMBERS *	*
1 0002	Ø3/4" x 12" TYPE L ANCHOR BOLT-H.D.G.	4
2 0007	Ø3/4" TYPE A FLAT NARROW WASHER GALVANIZED STEEL	4
3 0006	Ø3/4" HEX NUT GALVANIZED STEEL	8

NOTE: CONCRETE, FORM AND REBAR PROVIDED BY OTHERS



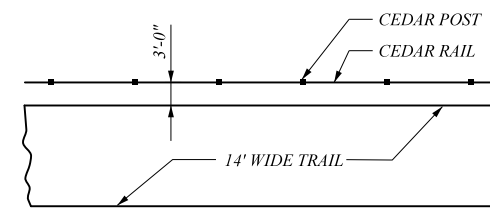
FOR MODELS:  
HDHB  
LPHDHB  
DHB  
DHB-SL

CPAS Included  
only if ordered

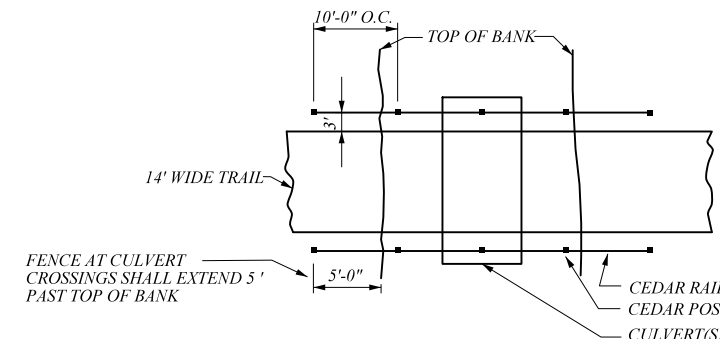


ELEVATION  
CEDAR SPLIT RAIL FENCE (3-RAIL)

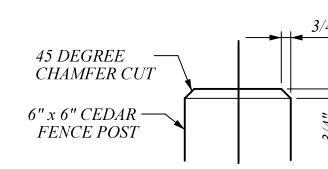
ELEVATION  
CEDAR FENCE



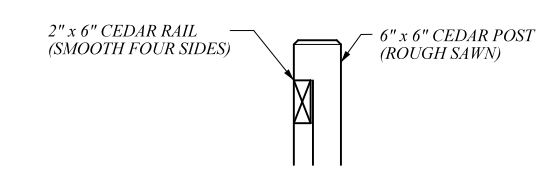
PLAN  
ALONG TRAIL



PLAN  
AT CULVERT CROSSING



DETAIL "A"



DETAIL "B"

NOTES:  
1. CONTRACTOR SHALL SUBMIT AND PROVIDE DATA FOR FENCE POSTS, RAILS, MESH, AND ALL OTHER ACCESSORIES REQUIRED.  
2. PRIOR TO INSTALLATION OF THE FENCE, SAMPLES OF THE POSTS, RAILS, AND ALL ACCESSORIES SHALL BE PROVIDED TO THE A/E FOR APPROVAL.

**WOOD POST AND RAIL FENCE**  
NOT TO SCALE

FILE NAME =	USER NAME = akw	DESIGNED M.C.C.D.	REVISED -
...\\D160F72-sht-details-52-MCCD-04.dgn		DRAWN	REVISED -
		CHECKED	REVISED -
		DATE -	REVISED -

STATE OF ILLINOIS  
DEPARTMENT OF TRANSPORTATION

McHENRY COUNTY CONSERVATION DISTRICT

SCALE: NONE SHEET NO. 4 OF 4 SHEETS STA. TO STA.

O.R. RTE.	SECTION	COUNTY	TOTAL SHEETS	SHEET NO.
0003	18A-2	MCHEMRY	825	397
CONTRACT NO. 60F72				
FED. ROAD DIST. NO. 1 ILLINOIS FED. AID PROJECT				