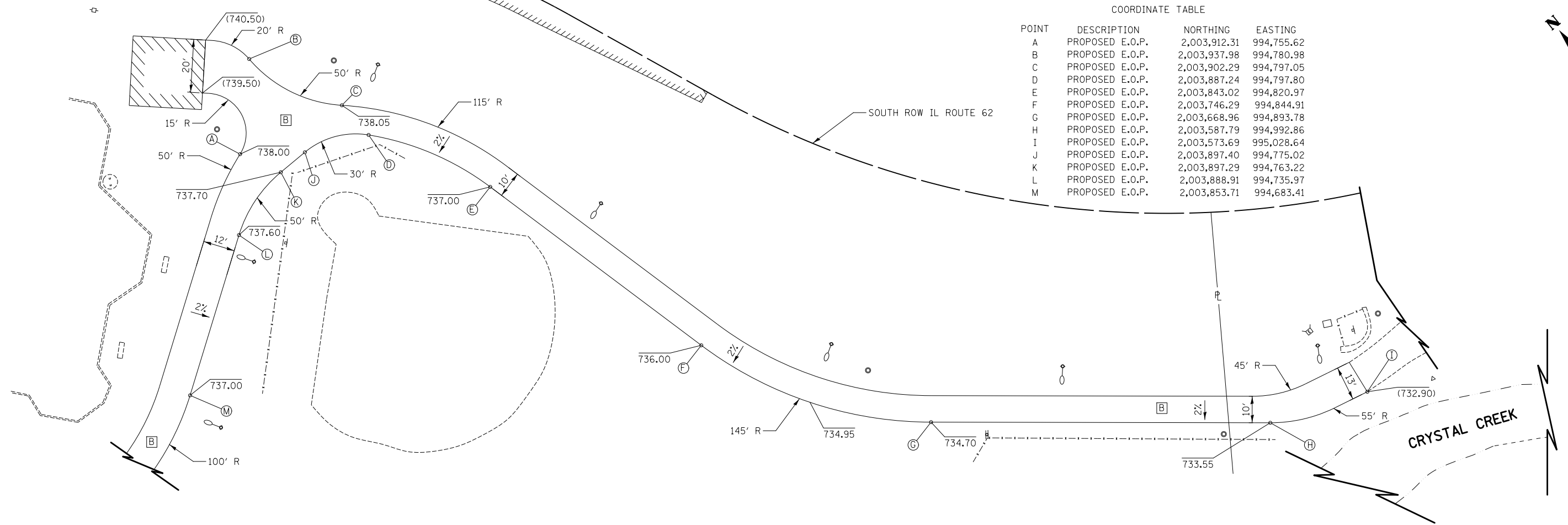


COORDINATE TABLE

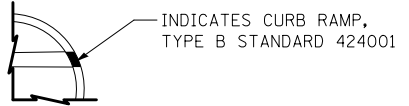
POINT	DESCRIPTION	NORTHING	EASTING
A	PROPOSED E.O.P.	2,003,912.31	994,755.62
B	PROPOSED E.O.P.	2,003,937.98	994,780.98
C	PROPOSED E.O.P.	2,003,902.29	994,797.05
D	PROPOSED E.O.P.	2,003,887.24	994,797.80
E	PROPOSED E.O.P.	2,003,843.02	994,820.97
F	PROPOSED E.O.P.	2,003,746.29	994,844.91
G	PROPOSED E.O.P.	2,003,668.96	994,893.78
H	PROPOSED E.O.P.	2,003,587.79	994,992.86
I	PROPOSED E.O.P.	2,003,573.69	995,028.64
J	PROPOSED E.O.P.	2,003,897.40	994,775.02
K	PROPOSED E.O.P.	2,003,897.29	994,763.22
L	PROPOSED E.O.P.	2,003,888.91	994,735.97
M	PROPOSED E.O.P.	2,003,853.71	994,683.41



**LEGEND**

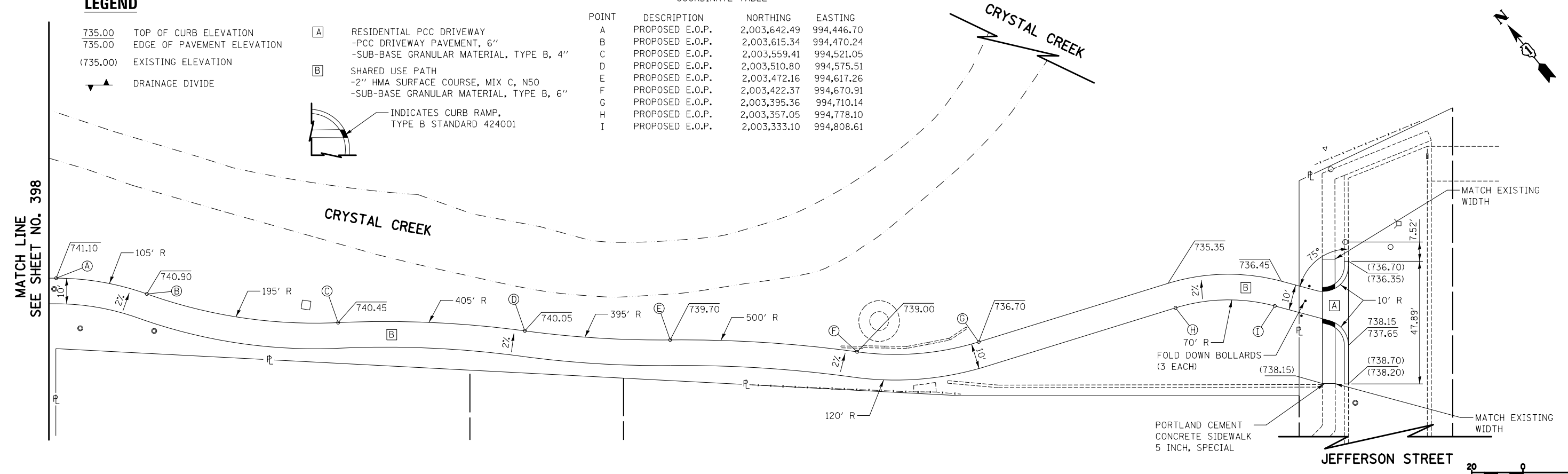
- 735.00 TOP OF CURB ELEVATION
- 735.00 EDGE OF PAVEMENT ELEVATION
- (735.00) EXISTING ELEVATION
- ▲ DRAINAGE DIVIDE

- [A] RESIDENTIAL PCC DRIVEWAY  
-PCC DRIVEWAY PAVEMENT, 6"  
-SUB-BASE GRANULAR MATERIAL, TYPE B, 4"
- [B] SHARED USE PATH  
-2" HMA SURFACE COURSE, MIX C, N50  
-SUB-BASE GRANULAR MATERIAL, TYPE B, 6"



COORDINATE TABLE

POINT	DESCRIPTION	NORTHING	EASTING
A	PROPOSED E.O.P.	2,003,642.49	994,446.70
B	PROPOSED E.O.P.	2,003,615.34	994,470.24
C	PROPOSED E.O.P.	2,003,559.41	994,521.05
D	PROPOSED E.O.P.	2,003,510.80	994,575.51
E	PROPOSED E.O.P.	2,003,472.16	994,617.26
F	PROPOSED E.O.P.	2,003,422.37	994,670.91
G	PROPOSED E.O.P.	2,003,395.36	994,710.14
H	PROPOSED E.O.P.	2,003,357.05	994,778.10
I	PROPOSED E.O.P.	2,003,333.10	994,808.61



FILE NAME = ...\\D160F72-sht-Towne Park-02.dgn

USER NAME = akw  
 PLOT SCALE = 40.0000' / in.  
 PLOT DATE = 5/2/2012

DESIGNED - BAS  
 DRAWN - BAS  
 CHECKED - GAB  
 DATE - 5/3/2012

REVISED -  
 REVISED -  
 REVISED -  
 REVISED -

**STATE OF ILLINOIS  
 DEPARTMENT OF TRANSPORTATION**

**TOWNE PARK PLANS**

SCALE: 1" = 20' SHEET NO. 2 OF 2 SHEETS STA. TO STA.

O.R. RTE.	SECTION	COUNTY	TOTAL SHEETS	SHEET NO.
0003	18A-2	MCHENRY	825	399

CONTRACT NO. 60F72  
 FED. ROAD DIST. NO. 1 ILLINOIS FED. AID PROJECT

