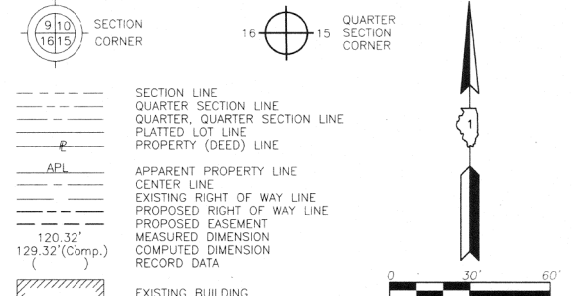


PART OF THE EAST 1/2 OF SEC. 33 AND PART OF THE FRACTIONAL WEST 1/2 OF SEC. 34, TWP. 43 N., R. 8 E. OF THE 3RD. P.M., IN McHENRY COUNTY, ILLINOIS.

LEGEND



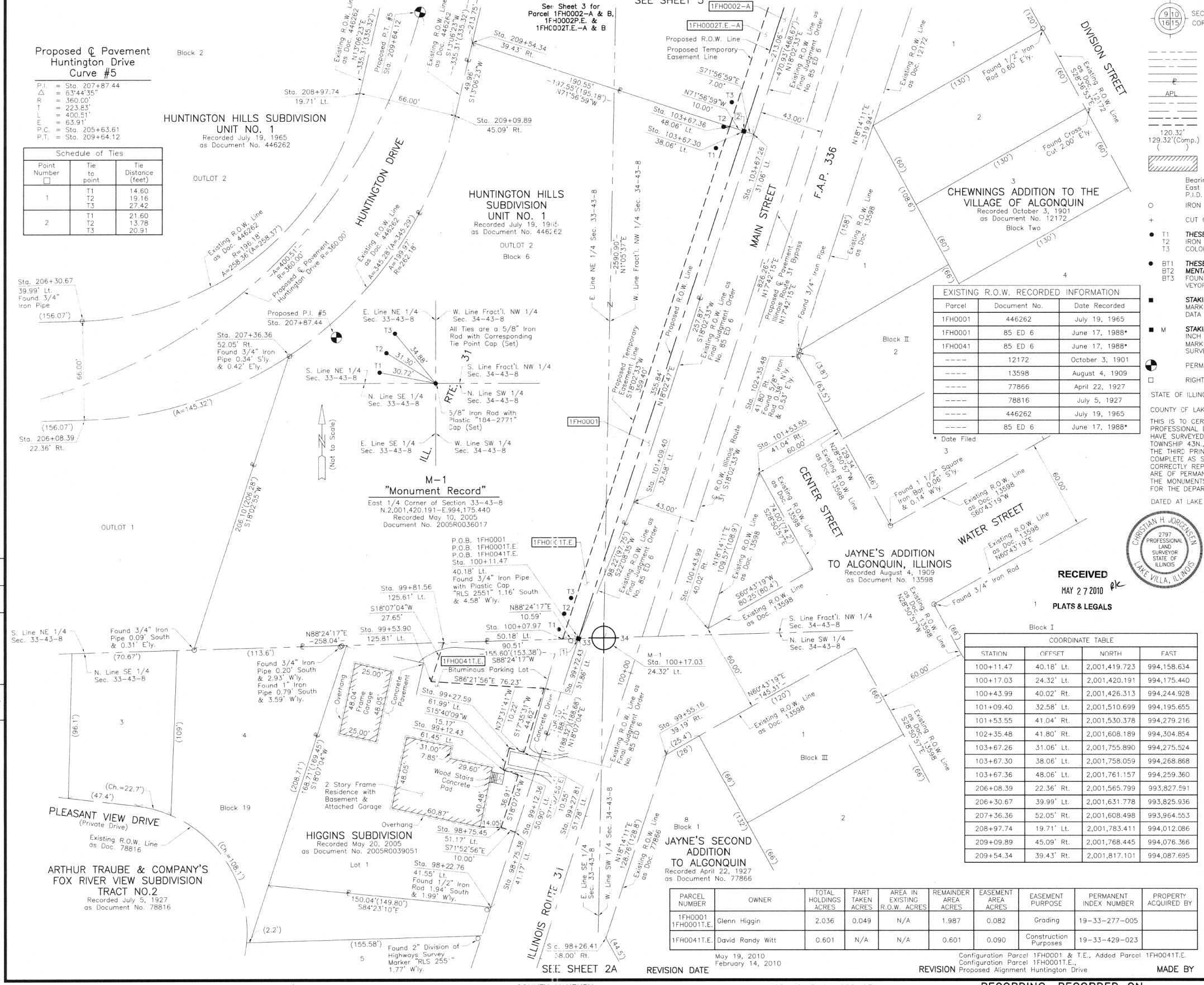
Proposed Pavement Huntington Drive Curve #5

P.I. = Sta. 207+87.44
 Δ = 63°44'35"
 R = 360.00'
 T = 223.83'
 L = 400.51'
 E.C. = 63.91'
 P.C. = Sta. 205+63.61
 P.T. = Sta. 209+64.12

Point Number	Tie to point	Tie Distance (feet)
1	T1	14.60
	T2	19.16
	T3	27.42
2	T1	21.60
	T2	13.78
	T3	20.91

Schedule of Ties

Point Number	Tie to point	Tie Distance (feet)
1	T1	14.60
	T2	19.16
	T3	27.42
2	T1	21.60
	T2	13.78
	T3	20.91



EXISTING R.O.W. RECORDED INFORMATION

Parcel	Document No.	Date Recorded
1FH0001	446262	July 19, 1965
1FH0001	85 ED 6	June 17, 1988*
1FH0041	85 ED 6	June 17, 1988*
----	12172	October 3, 1901
----	13598	August 4, 1909
----	77866	April 22, 1927
----	78816	July 5, 1927
----	446262	July 19, 1965
----	85 ED 6	June 17, 1988*

ROW	DATE	BY	MADE	CHECKED	INCH	NOTED	BOOK	NO.



RECEIVED
MAY 27 2010
PLATS & LEGALS

DATE FILED 3

COORDINATE TABLE

STATION	OFFSET	NORTH	EAST
98+22.76	41.55' Lt.	2,001,240.369	994,099.950
98+26.41	38.00' Rt.	2,001,219.650	994,176.835
98+75.38	41.17' Lt.	2,001,290.374	994,116.312
98+75.45	51.17' Lt.	2,001,293.484	994,106.807
99+12.36	50.90' Lt.	2,001,328.563	994,118.265
99+12.43	61.45' Lt.	2,001,331.844	994,108.256
99+27.59	61.99' Lt.	2,001,346.450	994,112.354
99+27.81	51.78' Lt.	2,001,343.554	994,122.150
99+53.90	125.81' Lt.	2,001,390.920	994,059.559
99+55.16	39.19' Rt.	2,001,341.940	994,217.128
99+72.43	51.86' Lt.	2,001,386.088	994,135.636
99+81.56	125.61' Lt.	2,001,417.203	994,068.159
100+07.97	50.18' Lt.	2,001,419.428	994,148.045

COORDINATE TABLE

STATION	OFFSET	NORTH	EAST
100+11.47	40.18' Lt.	2,001,419.723	994,158.634
100+17.03	24.32' Lt.	2,001,420.191	994,175.440
100+43.99	40.02' Rt.	2,001,426.313	994,244.928
101+09.40	32.58' Lt.	2,001,510.699	994,195.655
101+53.55	41.04' Rt.	2,001,530.378	994,279.216
102+35.48	41.80' Rt.	2,001,608.189	994,304.854
103+67.26	31.06' Lt.	2,001,755.890	994,275.524
103+67.30	38.06' Lt.	2,001,758.059	994,268.868
103+67.36	48.06' Lt.	2,001,761.157	994,259.360
206+08.39	22.36' Rt.	2,001,565.799	993,827.591
206+30.67	39.99' Lt.	2,001,631.778	993,825.936
207+36.36	52.05' Rt.	2,001,608.498	993,964.553
208+97.74	19.71' Lt.	2,001,783.411	994,012.086
209+09.89	45.09' Rt.	2,001,768.445	994,076.366
209+54.34	39.43' Rt.	2,001,817.101	994,087.695

PARCEL NUMBER	OWNER	TOTAL HOLDINGS ACRES	PART TAKEN ACRES	AREA IN EXISTING R.O.W. ACRES	REMAINDER AREA ACRES	EASEMENT AREA ACRES	EASEMENT PURPOSE	PERMANENT INDEX NUMBER	PROPERTY ACQUIRED BY
1FH0001	Glenn Higgin	2.036	0.049	N/A	1.987	0.082	Grading	19-33-277-005	
1FH0041E	David Randy Witt	0.601	N/A	N/A	0.601	0.090	Construction Purposes	19-33-429-023	

PLAT OF HIGHWAYS
STATE OF ILLINOIS
DEPARTMENT OF TRANSPORTATION
F.A.P. 336 (ILLINOIS ROUTE 31 BYPASS)
SECTION 96-00209-00-PV McHENRY COUNTY
PROJECT JOB NO. R-91-022-03
STATION 98+00 TO STATION 104+00
STATION 206+00 TO STATION 210+00
SCALE: 1"=30'
SHEET 2 OF 37

BUREAU OF LAND ACQUISITION
201 WEST CENTER COURT
SCHAUMBURG, ILLINOIS 60196

ROUTE F.A.P. 336 (ILLINOIS ROUTE 31 BYPASS) SECTION 96-00209-00-PV COUNTY McHENRY JOB NO. R-91-022-03 RECORDING: RECORDED ON AS DOCUMENT NO.