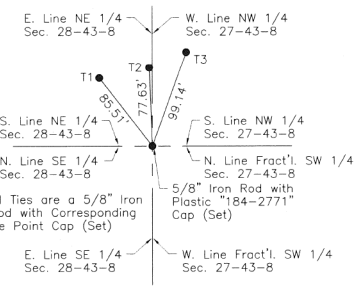
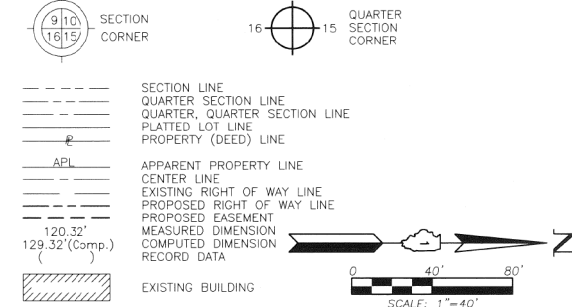


PART OF THE FRACTIONAL SW 1/4 OF SEC. 27 AND PART OF THE SE 1/4 OF SEC. 28, TWP. 43 N., R. 8 E. OF THE 3RD. P.M., IN McHENRY COUNTY, ILLINOIS.

LEGEND



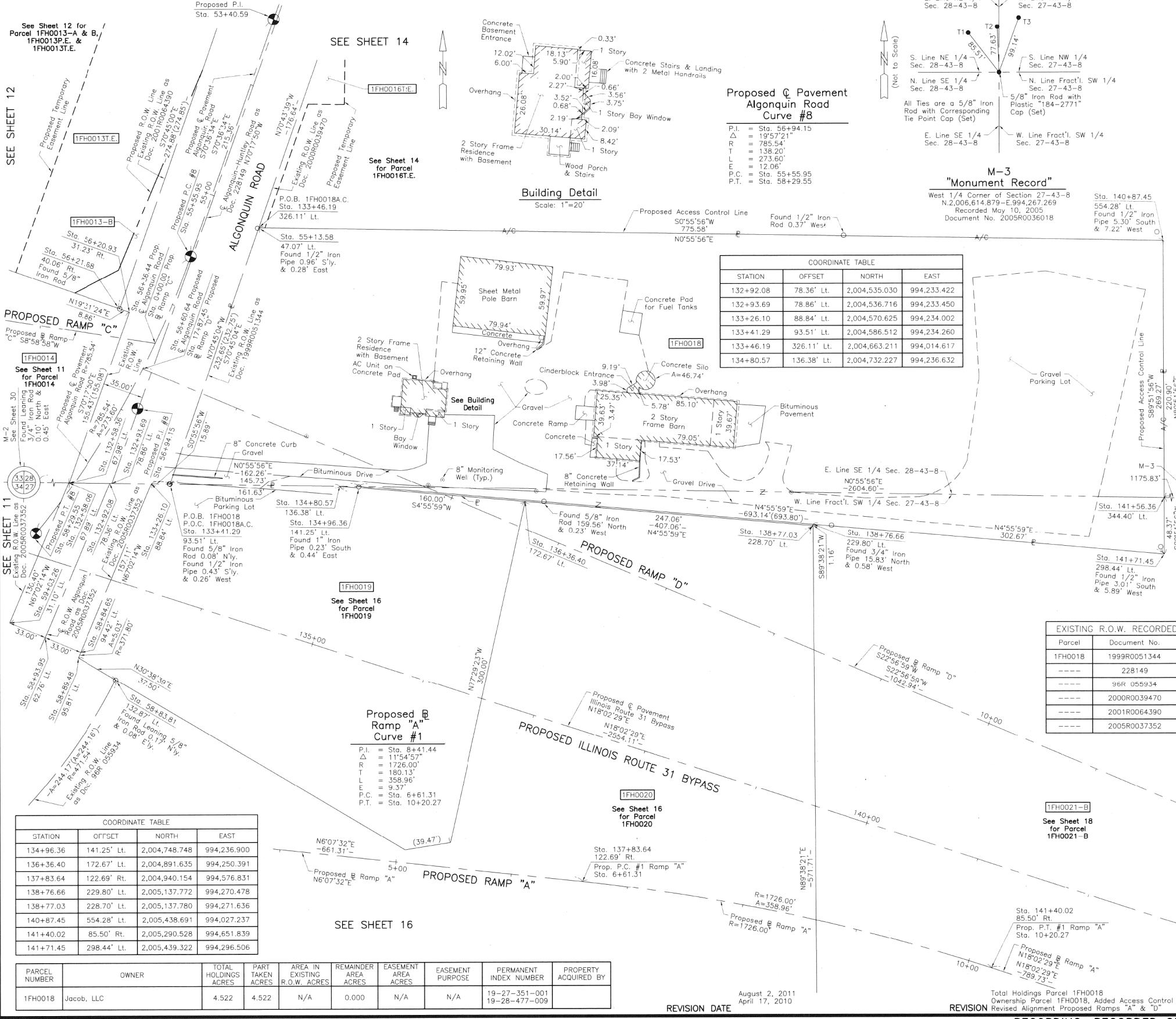
**Proposed C Pavement Algonquin Road Curve #8**

P.I. = Sta. 56+94.15  
 $\Delta$  = 19°57'21"  
 R = 785.54'  
 T = 138.20'  
 L = 273.60'  
 E = 12.06'  
 P.C. = Sta. 55+55.95  
 P.T. = Sta. 58+29.55

**M-3 "Monument Record"**

West 1/4 Corner of Section 27-43-8  
 N.2,006,614.879-E.994,267.269  
 Recorded May 10, 2005  
 Document No. 2005R0036018

STATION	OFFSET	NORTH	EAST
132+92.08	78.36' Lt.	2,004,535.030	994,233.422
132+93.69	78.86' Lt.	2,004,536.716	994,233.450
133+26.10	88.84' Lt.	2,004,570.625	994,234.002
133+41.29	93.51' Lt.	2,004,586.512	994,234.260
133+46.19	126.11' Lt.	2,004,663.211	994,014.617
134+80.57	136.38' Lt.	2,004,732.227	994,236.632



STATION	OFFSET	NORTH	EAST
134+96.36	141.25' Lt.	2,004,748.748	994,236.900
136+36.40	172.67' Lt.	2,004,891.635	994,250.391
137+83.64	122.69' Rt.	2,004,940.154	994,576.831
138+76.66	229.80' Lt.	2,005,137.772	994,270.478
138+77.03	228.70' Lt.	2,005,137.780	994,271.636
140+87.45	554.28' Lt.	2,005,438.691	994,027.237
141+40.02	85.50' Rt.	2,005,290.528	994,651.839
141+71.45	298.44' Lt.	2,005,439.322	994,296.506

Parcel	Document No.	Date Recorded
1FH0018	1999R0051344	July 16, 1999
-----	228149	February 2, 1950
-----	96R 055934	October 31, 1996
-----	2000R0039470	July 24, 2000
-----	2001R0064390	September 4, 2001
-----	2005R0037352	May 16, 2005

STATION	OFFSET	NORTH	EAST
55+13.58	47.07' Lt.	2,004,663.211	994,014.617
56+20.93	31.23' Rt.	2,004,552.155	994,086.521
56+21.68	40.06' Rt.	2,004,543.805	994,083.560
56+36.44	€	2,004,574.181	994,113.380
56+60.64	€	2,004,563.518	994,135.104
58+83.81	132.87' Lt.	2,004,539.596	994,402.392
58+84.65	94.42' Lt.	2,004,509.330	994,378.664
58+89.48	95.81' Lt.	2,004,507.337	994,383.280
58+93.95	62.76' Lt.	2,004,478.945	994,365.790
59+03.26	31.10' Lt.	2,004,448.560	994,352.915
132+58.06	67.89' Lt.	2,004,499.436	994,232.843
132+58.36	67.98' Lt.	2,004,499.755	994,232.848

PARCEL NUMBER	OWNER	TOTAL HOLDINGS ACRES	PART TAKEN ACRES	AREA IN EXISTING R.O.W. ACRES	REMAINDER AREA ACRES	EASEMENT AREA ACRES	EASEMENT PURPOSE	PERMANENT INDEX NUMBER	PROPERTY ACQUIRED BY
1FH0018	Jacob, LLC	4.522	4.522	N/A	0.000	N/A	N/A	19-27-351-001 19-28-477-009	

ROUTE F.A.P. 336 (ILLINOIS ROUTE 31 BYPASS) SECTION 96-00209-00-PV COUNTY McHENRY JOB NO. R-91-022-03 RECORDING: RECORDED ON AS DOCUMENT NO.

FILE NAME = ... \D160F72-sht-PH-18.dgn	USER NAME = akw	DESIGNED -	REVISED -	<b>STATE OF ILLINOIS</b> <b>DEPARTMENT OF TRANSPORTATION</b>	<b>PLAT OF HIGHWAYS</b>	O.R. RTE.	SECTION	COUNTY	TOTAL SHEETS	SHEET NO.	
		DRAWN - JORGENSEN & ASSOC.	REVISED -			0003	18A-2	McHENRY	825	427	
		CHECKED - CJ	REVISED -			CONTRACT NO. 60F72					
		DATE -	REVISED -			FED. ROAD DIST. NO. 1 ILLINOIS FED. AID PROJECT					



RECEIVED  
 MAR 2 12 2012  
 PLATS & LEGALS

JORGENSEN & ASSOCIATES, INC.  
 120 PARK AVENUE  
 LAKE VILLA, ILLINOIS 60046  
 (847) 356-3371

**PLAT OF HIGHWAYS**  
**STATE OF ILLINOIS**  
**DEPARTMENT OF TRANSPORTATION**  
 F.A.P. 336 (ILLINOIS ROUTE 31 BYPASS)  
 SECTION 96-00209-00-PV McHENRY COUNTY  
 PROJECT JOB NO. R-91-022-03  
 STATION 53+40.59 TO STATION 59+00  
 STATION 132+00 TO STATION 143+00  
 SCALE: 1"=40' SHEET 15 OF 37

**BUREAU OF LAND ACQUISITION**  
 201 WEST CENTER COURT  
 SCHAUMBURG, ILLINOIS 60196