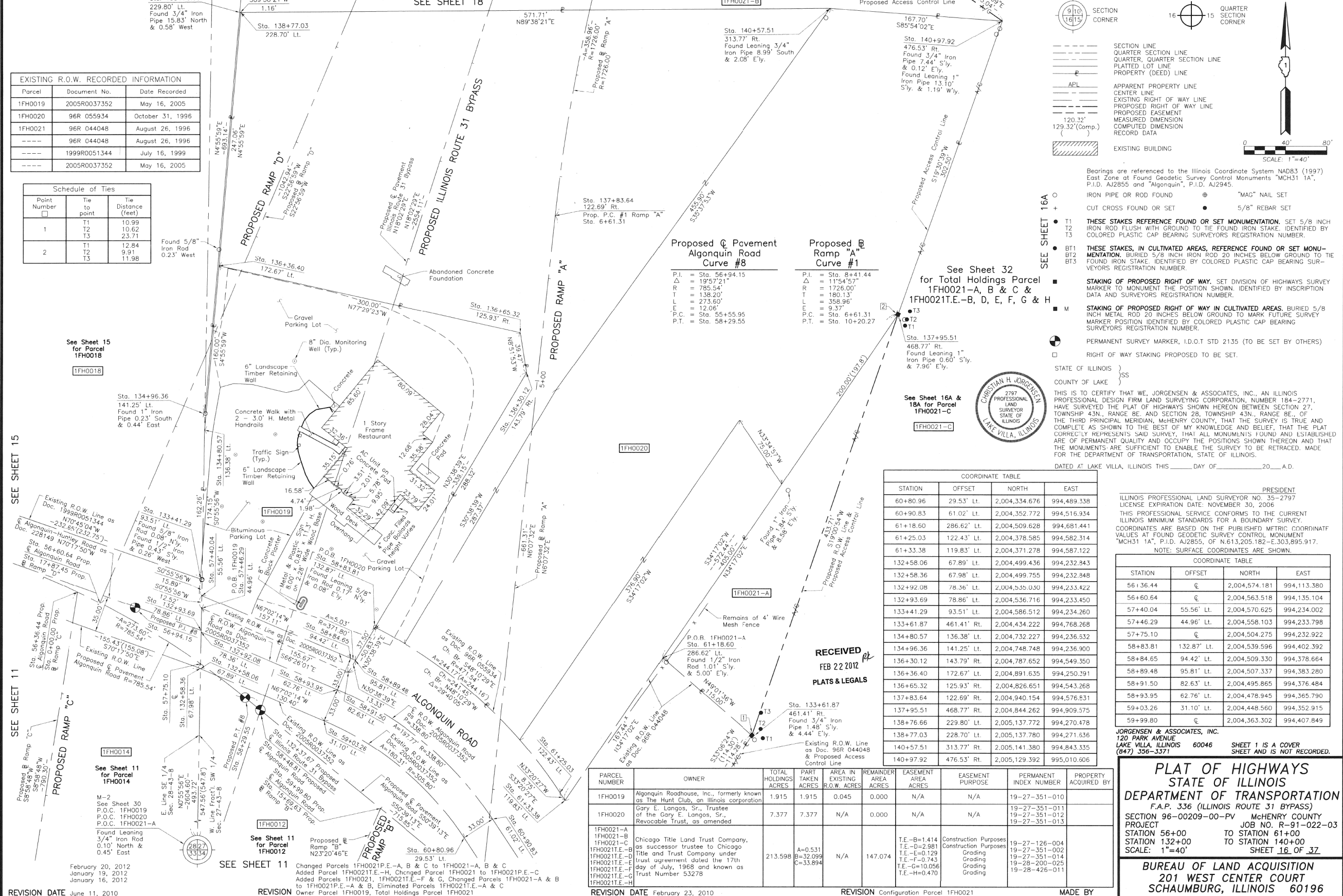


PART OF THE FRACTIONAL SW 1/4 OF SEC. 27 AND PART OF THE SE 1/4 OF SEC. 28, TWP. 43 N., R. 8 E. OF THE 3RD. P.M., IN McHENRY COUNTY, ILLINOIS.



Parcel	Document No.	Date Recorded
1FH0019	2005R0037352	May 16, 2005
1FH0020	96R 055934	October 31, 1996
1FH0021	96R 044048	August 26, 1996
----	96R 044048	August 26, 1996
----	1999R0051344	July 16, 1999
----	2005R0037352	May 16, 2005

Point Number	Tie to	Tie Distance (feet)
1	T1	10.99
	T2	10.62
	T3	23.71
2	T1	12.84
	T2	9.91
	T3	11.98

See Sheet 15 for Parcel 1FH0018

SEE SHEET 15

SEE SHEET 11

February 20, 2012
January 19, 2012
January 16, 2012

REVISION DATE June 11, 2010
REVISION DATE February 23, 2010

STATION	OFFSET	NORTH	EAST
60+80.96	29.53' Lt.	2,004,334.676	994,489.338
60+90.83	61.02' Lt.	2,004,352.772	994,516.334
61+18.60	286.62' Lt.	2,004,509.628	994,681.441
61+25.03	122.43' Lt.	2,004,378.585	994,582.314
61+33.38	119.83' Lt.	2,004,371.278	994,587.122
132+58.06	67.89' Lt.	2,004,499.436	994,232.343
132+58.36	67.98' Lt.	2,004,499.755	994,232.348
132+92.08	78.36' Lt.	2,004,535.030	994,233.422
132+93.69	78.86' Lt.	2,004,536.716	994,233.450
133+41.29	93.51' Lt.	2,004,586.512	994,234.260
133+61.87	461.41' Rt.	2,004,434.222	994,768.268
134+80.57	136.38' Lt.	2,004,732.227	994,236.532
134+96.36	141.25' Lt.	2,004,748.748	994,236.900
136+30.12	143.79' Rt.	2,004,787.652	994,549.350
136+36.40	172.67' Lt.	2,004,891.635	994,250.391
136+65.32	125.93' Rt.	2,004,826.651	994,543.268
137+83.64	122.69' Rt.	2,004,940.154	994,576.531
137+95.51	468.77' Rt.	2,004,844.262	994,909.575
138+76.66	229.80' Lt.	2,005,137.772	994,270.478
138+77.03	228.70' Lt.	2,005,137.780	994,271.636
140+57.51	313.77' Rt.	2,005,141.380	994,843.335
140+97.92	476.53' Rt.	2,005,129.392	995,010.606

ILLINOIS PROFESSIONAL LAND SURVEYOR NO. 35-2797
LICENSE EXPIRATION DATE, NOVEMBER 30, 2006
THIS PROFESSIONAL SERVICE CONFORMS TO THE CURRENT ILLINOIS MINIMUM STANDARDS FOR A BOUNDARY SURVEY.
COORDINATES ARE BASED ON THE PUBLISHED METRIC COORDINATE VALUES AT FOUND GEODETIC SURVEY CONTROL MONUMENT "MCH31 1A", P.I.D. AJ2855, OF N.613,205.182-E.303,895.917.
NOTE: SURFACE COORDINATES ARE SHOWN.

STATION	OFFSET	NORTH	EAST
56+36.44	€	2,004,574.181	994,113.380
56+60.64	€	2,004,563.518	994,135.104
57+40.04	55.56' Lt.	2,004,570.625	994,234.002
57+46.29	44.96' Lt.	2,004,558.103	994,233.798
57+75.10	€	2,004,504.275	994,232.922
58+83.81	132.87' Lt.	2,004,539.596	994,402.392
58+84.65	94.42' Lt.	2,004,509.330	994,378.664
58+89.48	95.81' Lt.	2,004,507.337	994,383.280
58+91.50	82.63' Lt.	2,004,495.865	994,376.484
58+93.95	62.76' Lt.	2,004,478.945	994,365.790
59+03.26	31.10' Lt.	2,004,448.560	994,352.915
59+99.80	€	2,004,363.302	994,407.849

JORGENSEN & ASSOCIATES, INC.
120 PARK AVENUE
LAKE VILLA, ILLINOIS 60046 SHEET 1 IS A COVER SHEET AND IS NOT RECORDED.
(847) 356-3371

PLAT OF HIGHWAYS
STATE OF ILLINOIS
DEPARTMENT OF TRANSPORTATION
F.A.P. 336 (ILLINOIS ROUTE 31 BYPASS)
SECTION 96-00209-00-PV McHENRY COUNTY
PROJECT JOB NO. R-91-022-03
STATION 56+00 TO STATION 61+00
STATION 132+00 TO STATION 140+00
SCALE: 1"=40'
SHEET 16 OF 32

BUREAU OF LAND ACQUISITION
201 WEST CENTER COURT
SCHAUMBURG, ILLINOIS 60196
AS DOCUMENT NO.

PARCEL NUMBER	OWNER	TOTAL HOLDINGS ACRES	PART TAKEN ACRES	AREA IN EXISTING R.O.W. ACRES	REMAINDER AREA ACRES	EASEMENT AREA ACRES	EASEMENT PURPOSE	PERMANENT INDEX NUMBER	PROPERTY ACQUIRED BY
1FH0019	Algonquin Roadhouse, Inc., formerly known as The Hunt Club, an Illinois corporation	1.915	1.915	0.045	0.000	N/A	N/A	19-27-351-010	
1FH0020	Gary E. Longos, Sr., Trustee of the Gary E. Longos, Sr., Revocable Trust, as amended	7.377	7.377	N/A	0.000	N/A	N/A	19-27-351-011 19-27-351-012 19-27-351-013	
1FH0021-A	Chicago Title Land Trust Company, as successor trustee to Chicago Title and Trust Company under trust agreement dated the 17th day of July, 1968 and known as Trust Number 53278	213.598	A=0.531 B=32.099 C=33.894	N/A	147.074	T.E.-B=1.414	Construction Purposes	19-27-126-004	
1FH0021-B						T.E.-D=2.981	Construction Purposes	19-27-351-002	
1FH0021-C						T.E.-E=0.129	Grading	19-27-351-014	
1FH0021-E						T.E.-F=0.743	Grading	19-28-200-025	
1FH0021-F						T.E.-G=10.056	Grading	19-28-426-011	
1FH0021-H						T.E.-H=0.470	Grading		

REVISION DATE February 23, 2010
REVISION Configuration Parcel 1FH0021
MADE BY

ROUTE F.A.P. 336 (ILLINOIS ROUTE 31 BYPASS) SECTION 96-00209-00-PV COUNTY McHENRY JOB NO. R-91-022-03 RECORDING: RECORDED ON AS DOCUMENT NO.

FILE NAME = ...\\D160F72-sht-19-11.dgn	USER NAME = akw	DESIGNED -	REVISED -	STATE OF ILLINOIS DEPARTMENT OF TRANSPORTATION	PLAT OF HIGHWAYS	SCALE: GRAPHIC SHEET NO. 19 OF 49 SHEETS STA. TO STA.	O.R. RTE.	SECTION	COUNTY	TOTAL SHEETS	SHEET NO.
		DRAWN - JORGENSEN & ASSOC.	REVISED -				0003	18A-2	McHENRY	825	428
		CHECKED - CJ	REVISED -				CONTRACT NO. 60F72			FED. ROAD DIST. NO. 1 ILLINOIS FED. AID PROJECT	
		PLOT DATE = 5/2/2012	DATE -	REVISED -							