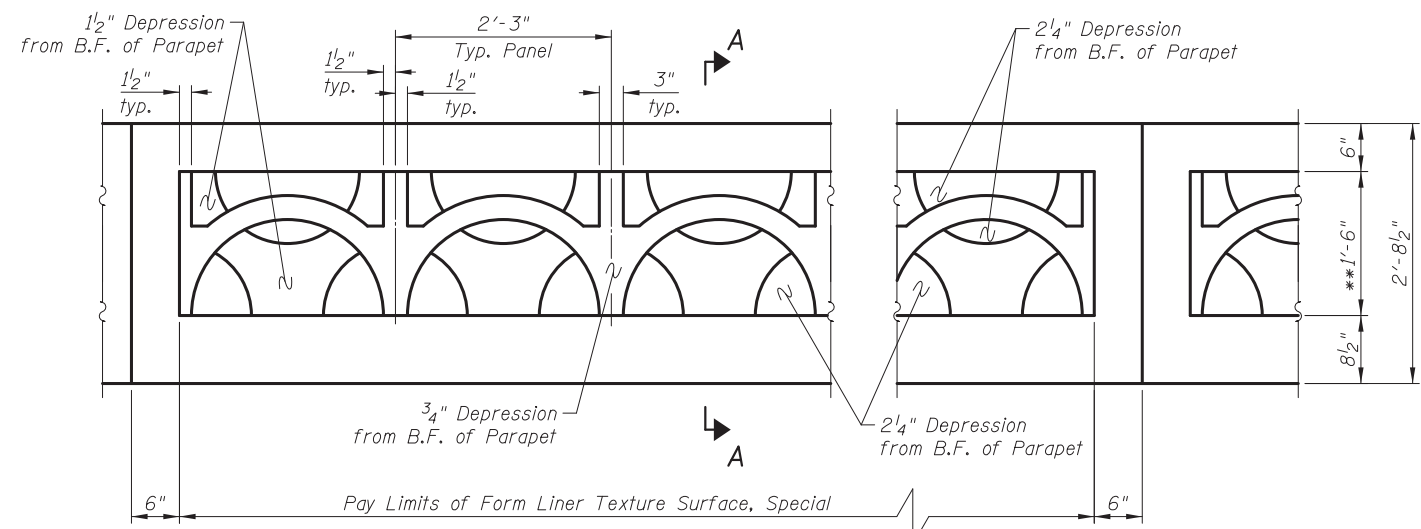
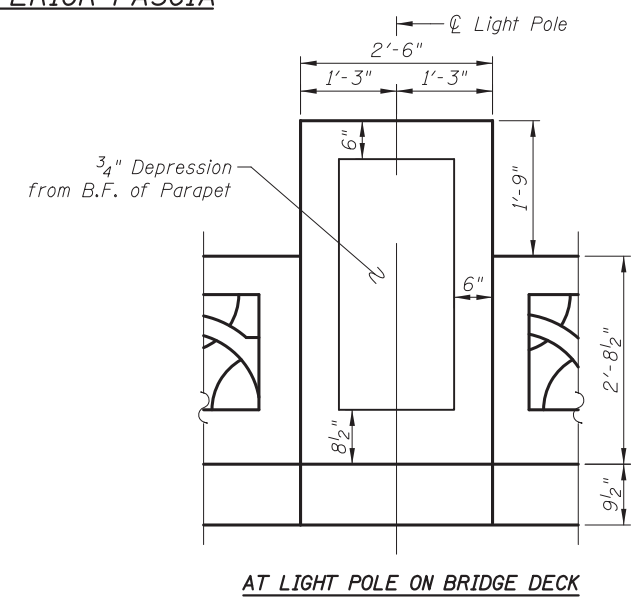


ELEVATION - EXTERIOR FASCIA

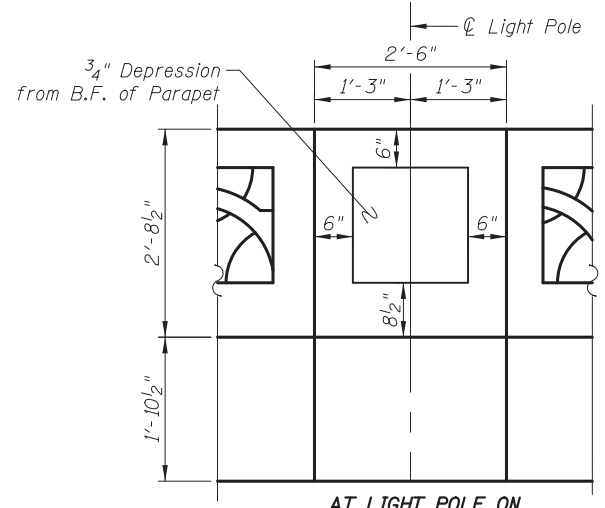
* Lateral Bracing connections shall occur at the vertical aluminum tubes and Hangers shall occur in mid span of lattice. Contractor to layout locations and submit shop drawings for approval.



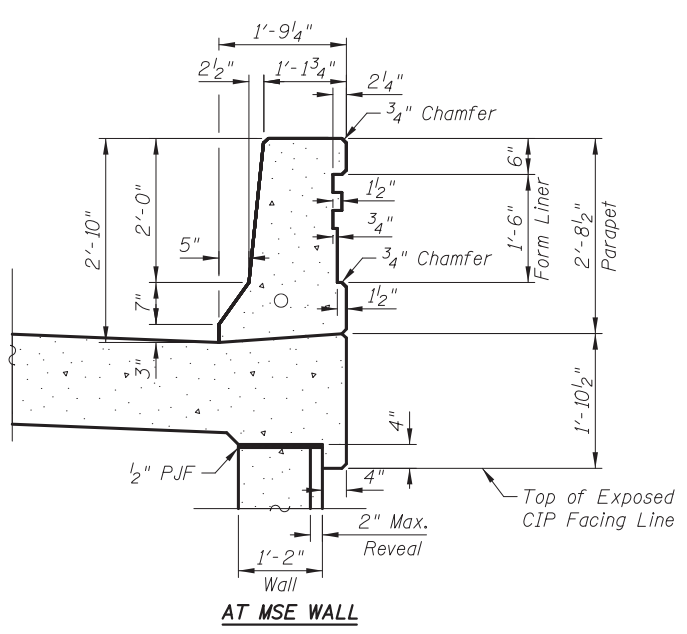
ELEVATION - OUTSIDE FACE OF PARAPET



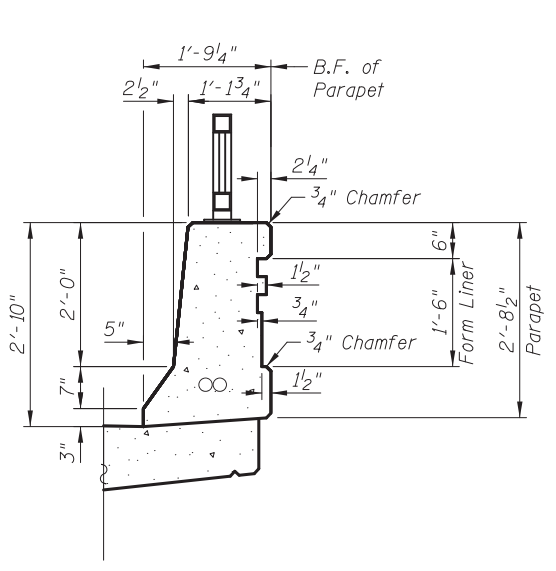
AT LIGHT POLE ON BRIDGE DECK



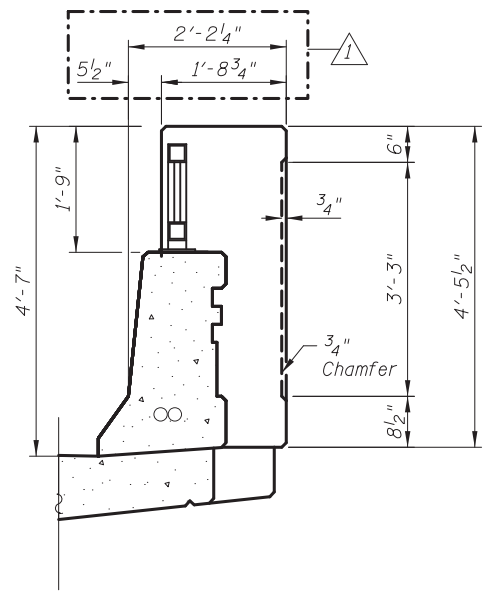
AT LIGHT POLE ON ANCHORAGE SLAB



AT MSE WALL

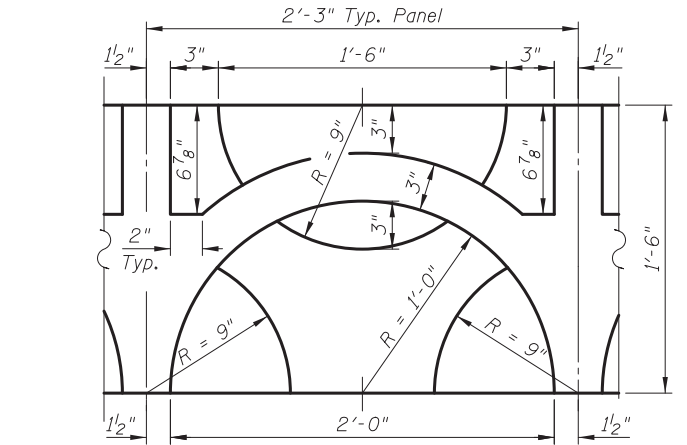


AT BRIDGE DECK



AT LIGHT POLE

SECTION A-A



FORM LINER TEXTURE SURFACE, SPECIAL DETAIL

Notes:
Parapet, railing, lighting and all other details not specifically pertaining to the lattice are shown for graphics purposes only.
See Sheet SA11 for Hanger and Lateral Bracing Details.

5/21/2012 10:38:34 AM I:\2154\cad\sheet\Roadway\20-Structures & Walls\01.SN 056-007\Y056007T-60F72-12-AD_rrev2.dgn

CIVILTECH
 450 E Devon Ave, Suite 300
 Itasca, Illinois 60143
 Tel: 630.773.3900 Fax: 630.773.3975
 www.civiltechinc.com

DRAWN	- M. LANGE	REVISED	- 5/4/12 K.L.B.
DESIGNED	- D. ATKINS	REVISED	-
CHECKED	- G. HATLESTAD	REVISED	-
DATE	- 5/3/2012	REVISED	-

**STATE OF ILLINOIS
 DEPARTMENT OF TRANSPORTATION**

**ARCHITECTURAL DETAILS
 ILLINOIS ROUTE 31 OVER CRYSTAL CREEK
 STRUCTURE NO. 056-0077**

SHEET NO. SA12 OF SA33 SHEETS

O.R. RTE.	SECTION	COUNTY	TOTAL SHEETS	SHEET NO.
0003	18A-2	MCHENRY	825	472
CONTRACT NO. 60F72				
ILLINOIS FED. AID PROJECT				