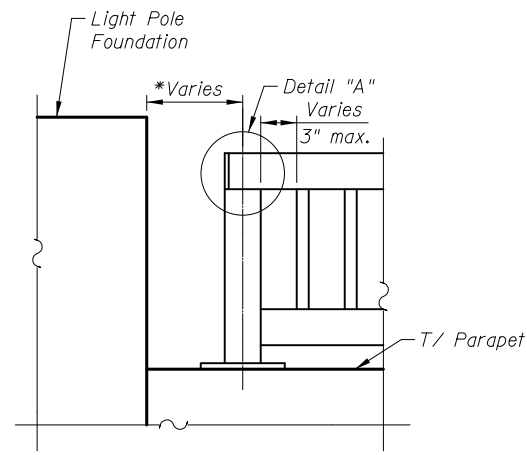
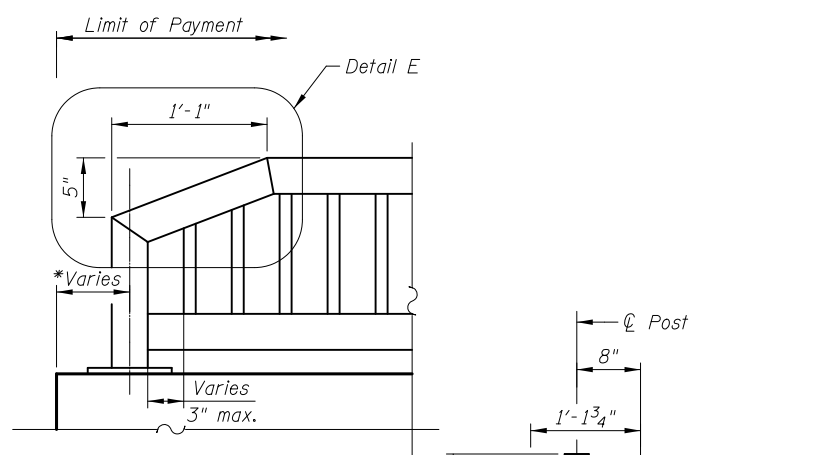


**ELEVATION**

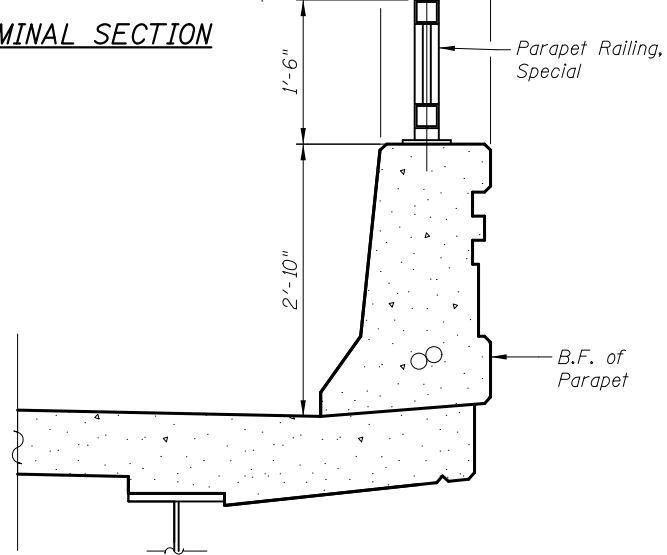


**END TREATMENT AT LIGHT POLE FOUNDATION**

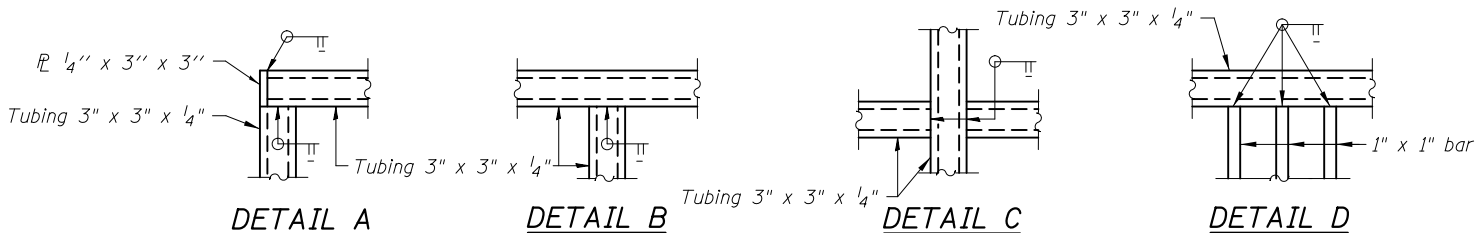
\* See sheet SA9 for dimensions



**TERMINAL SECTION**



**SECTION THRU PARAPET**

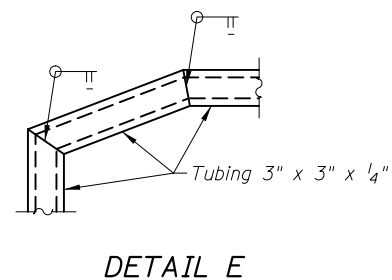


**DETAIL A**

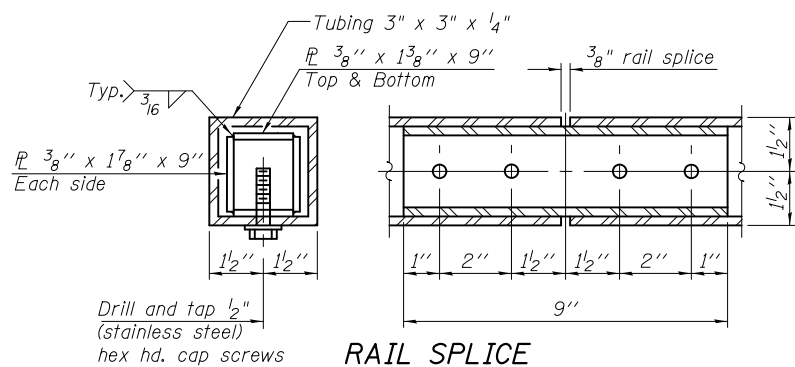
**DETAIL B**

**DETAIL C**

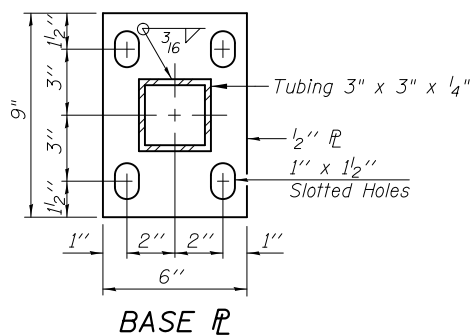
**DETAIL D**



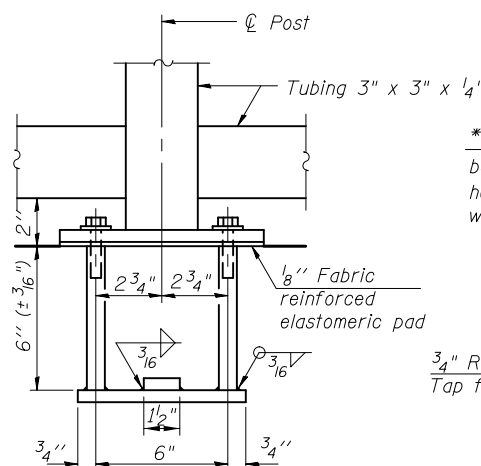
**DETAIL E**



**RAIL SPLICE**

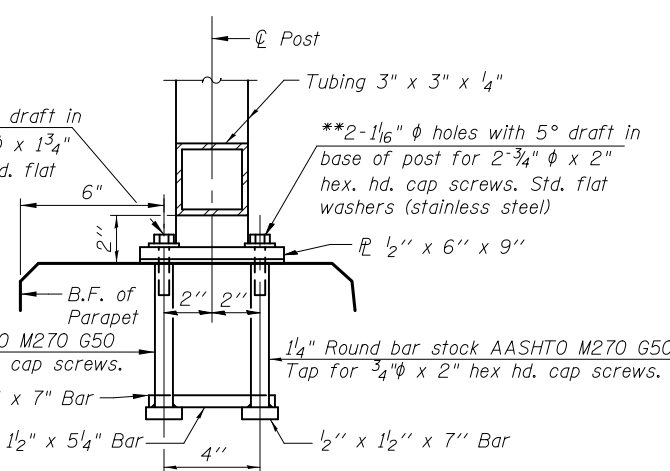


**BASE PL**



**ANCHOR BOLT DETAILS**

\*\* In lieu of the cast-in-place anchor device shown, the Contractor has the option of drilling and setting stainless steel anchor rods of the same diameter and grade as the specified cap screws according to Article 509.06 of the Standard Specifications. Embedment shall be according to the manufacturer's specifications.



**Notes:**  
 All post, railing, splices, anchor devices, and plates shall be painted the color Traffic Black (RAL 9017).  
 All posts shall be normal to the parapet.  
 All joints in rail shall be spliced detail.  
 All exposed rail ends shall be capped per detail.  
 Provide (1) 1/8" and (2) 1/16" aluminum shims for 25% of the posts.  
 Rail elements shall be parallel to grade - High spots shall be ground and low spots shimmed. Cost included in Parapet Railing, Special.

**BILL OF MATERIAL**

ITEM	UNIT	QUANTITY
Parapet Railing, Special	Foot	270

5/2/2012 4:16:39 PM I:\2154\cad\sheet\Roadway\20-Structures & Walls\01.SN 056-007T\056007T-60F72-15-PRS.dgn