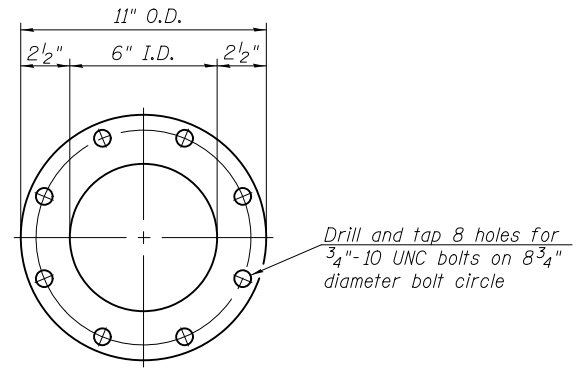
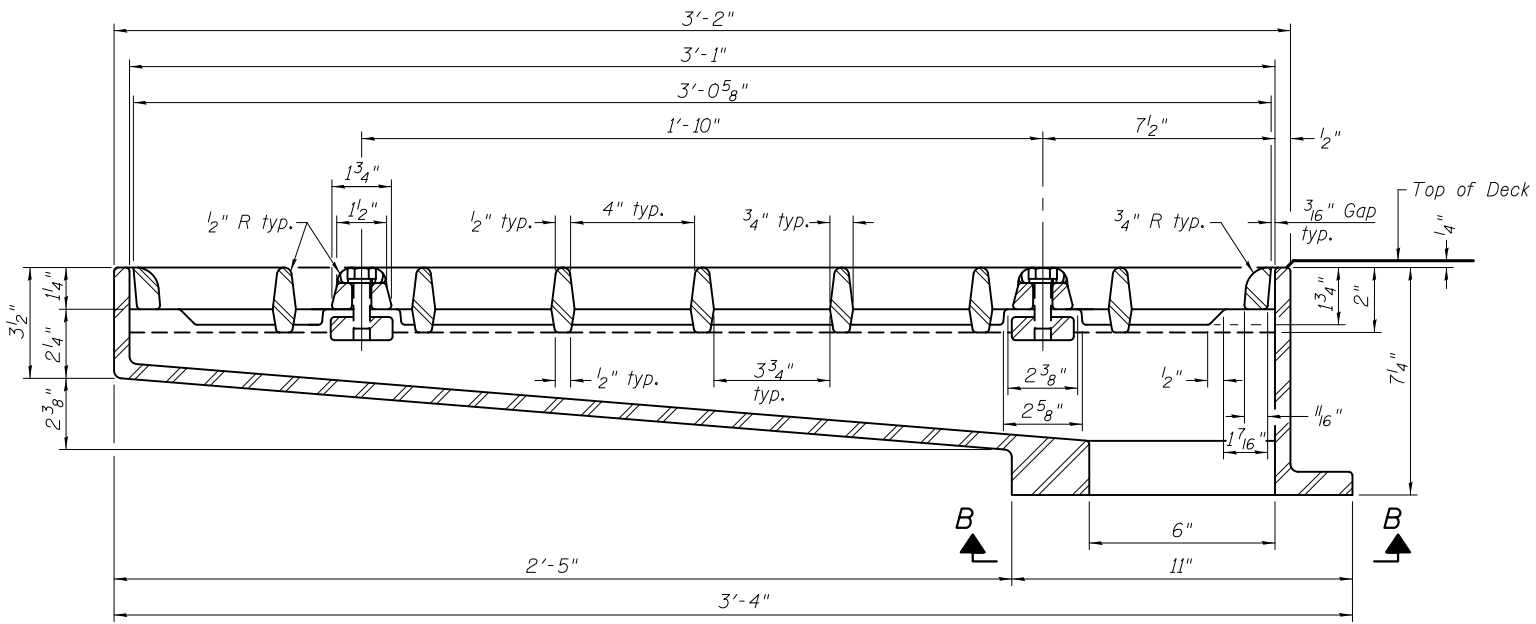


PLAN



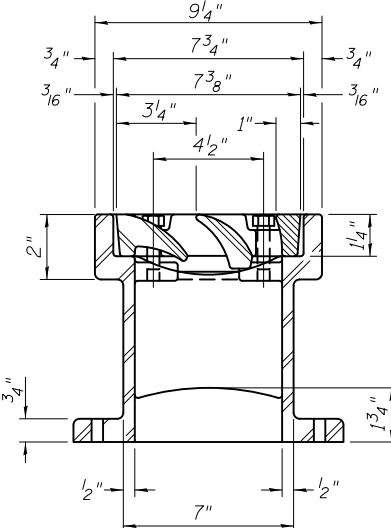
VIEW B-B

Drill and tap 8 holes for 3/4"-10 UNC bolts on 8 3/4" diameter bolt circle

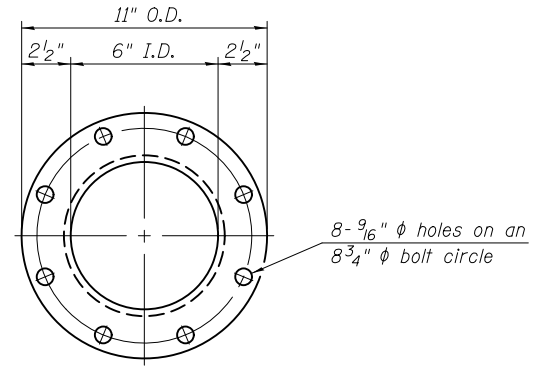


SECTION A-A

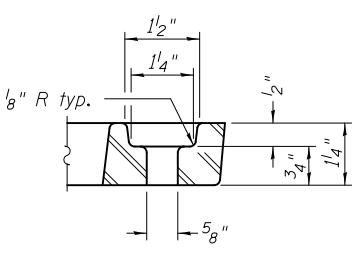
See sheet SA9 for scupper location relative to parapet.



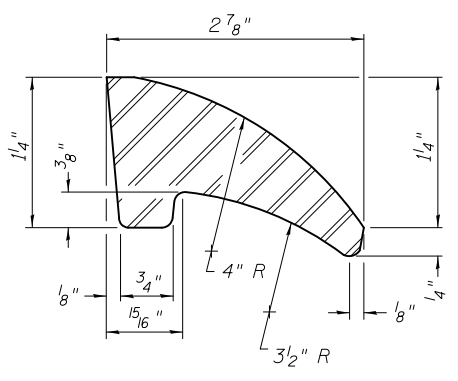
SECTION C-C



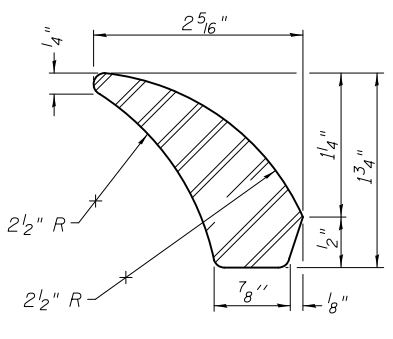
DOWNSPOUT



BOLT HOLE DETAIL



FIRST VANE DETAIL



SECOND VANE DETAIL

BILL OF MATERIAL

ITEM	UNIT	QUANTITY
Drainage Scupper, DS-33	Each	2

DS-33 7-1-10



DRAWN - M. LANGE	REVISED -
DESIGNED - D. ATKINS	REVISED -
CHECKED - G. HATLESTAD	REVISED -
DATE - 5/3/2012	REVISED -

STATE OF ILLINOIS
DEPARTMENT OF TRANSPORTATION

DRAINAGE SCUPPER, DS-33
ILLINOIS ROUTE 31 OVER CRYSTAL CREEK
STRUCTURE NO. 056-0077

O.R. RTE.	SECTION	COUNTY	TOTAL SHEETS	SHEET NO.
0003	18A-2	MCHENRY	825	477
CONTRACT NO. 60F72				

SHEET NO. SA17 OF SA33 SHEETS

ILLINOIS FED. AID PROJECT

5/2/2012 4:16:40 PM I:\2164\cad\sheet\Roadway\20-Structures & Walls\01.SN 056-0077\0560077-60F72-IT-DS33.dgn