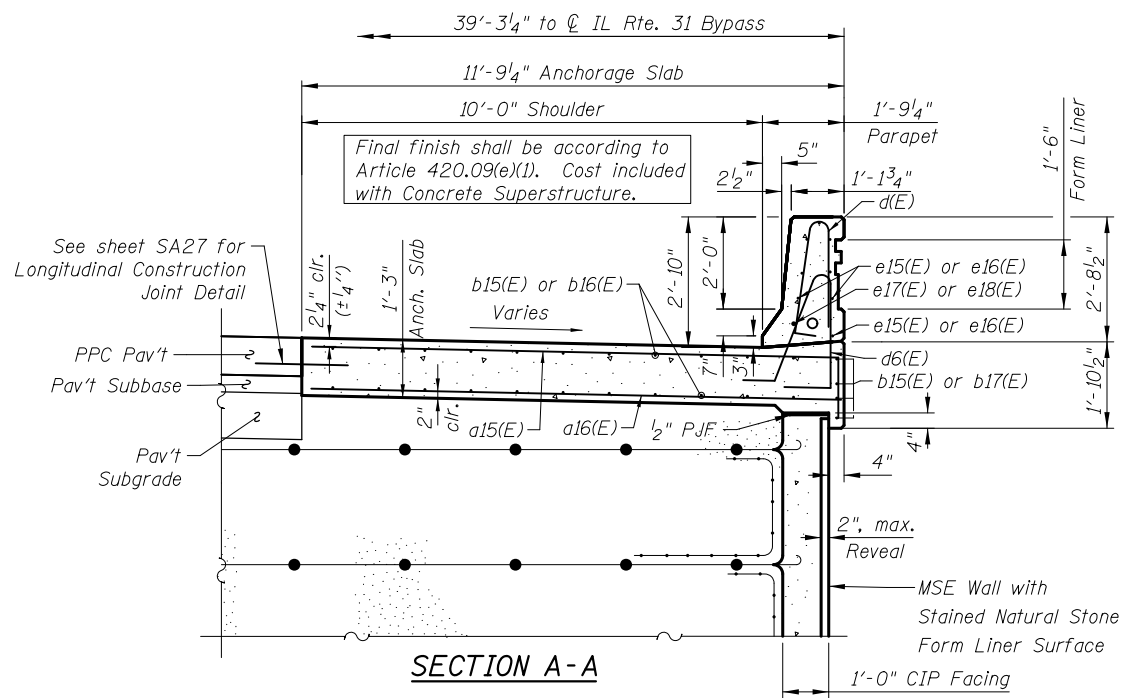
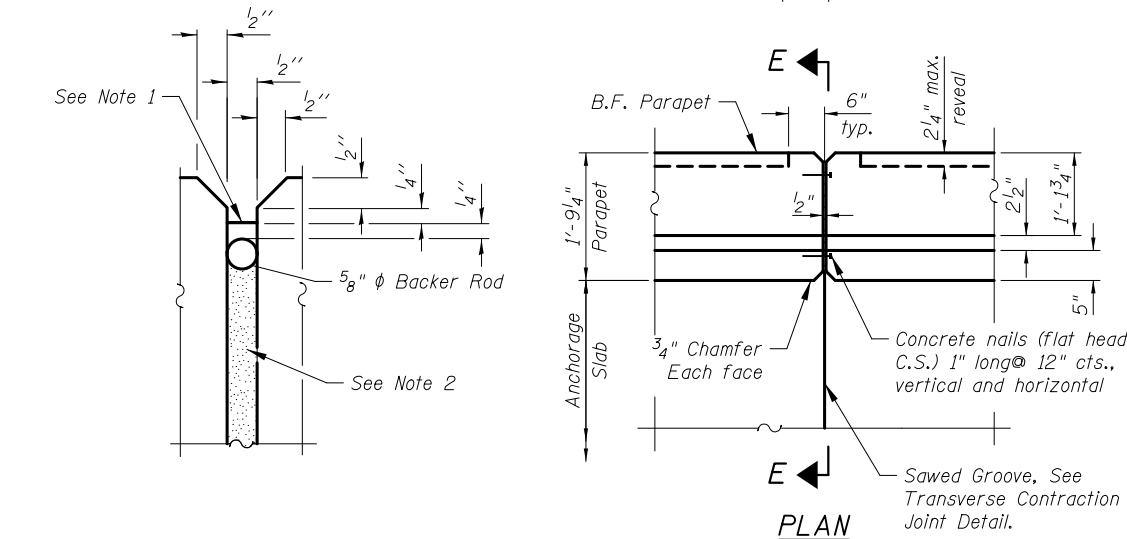


4/16/19 PM 4:16:49 PM I:\2164\Cad\sheet\Roadway\20-Structures & Walls\01.SN 056-0077\0560077-60F72-28-AND-REV.dgn 5/2/2012

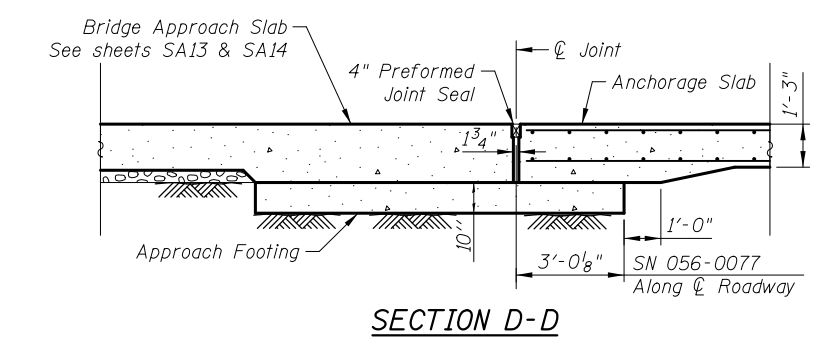


**SECTION A-A**

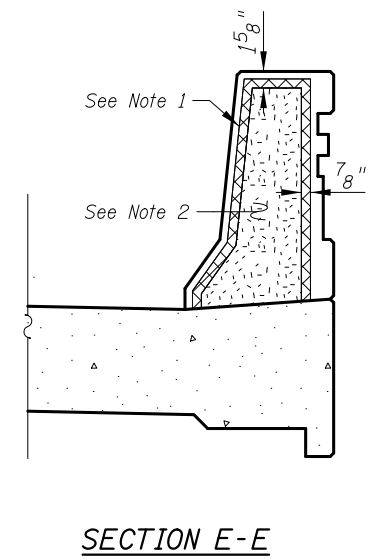


**PARAPET JOINT DETAILS**

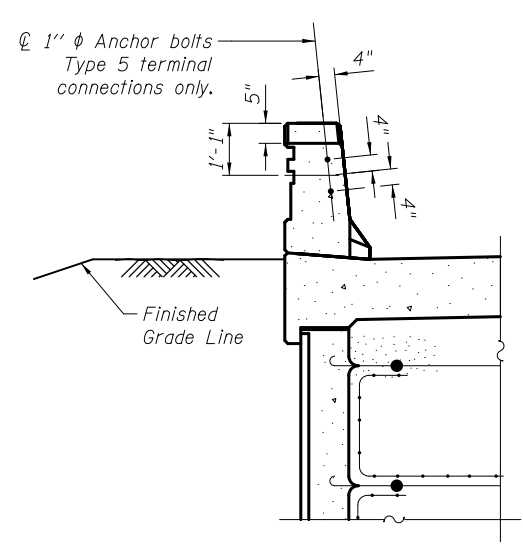
- Parapet Joint Notes:**
- Non-staining gray one component non-sag elastomeric gun grade polyurethane sealant meeting the requirements of ASTM C-920, Type S, Grade NS, Class 25, use T with a 5/8" backer rod.
  - 1/2" Preformed Self-Expanding Cork Joint Filler according to Article 1051.07 of the Std. Spec. Cost included with Concrete Superstructure.



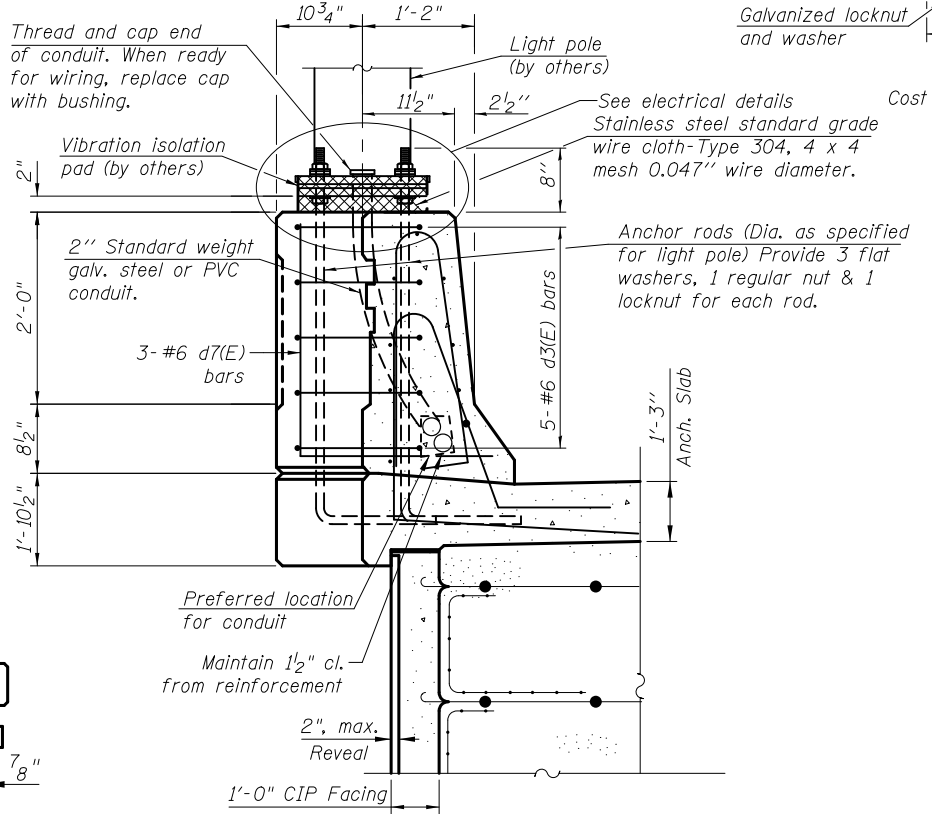
**SECTION D-D**



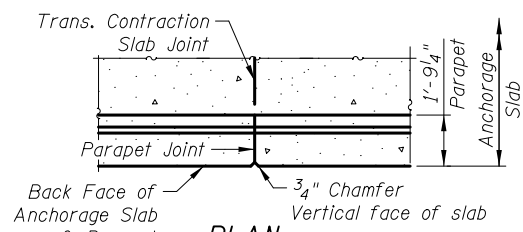
**SECTION E-E**



**VIEW C-C**



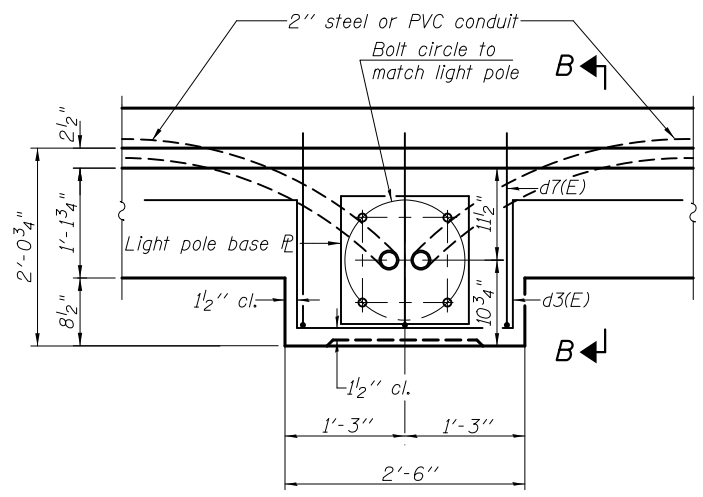
**SECTION B-B**



**PLAN**

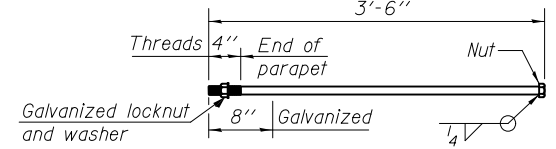
**TRANSVERSE CONTRACTION JOINT**

See Art. 420.05(c) of Standard Specifications



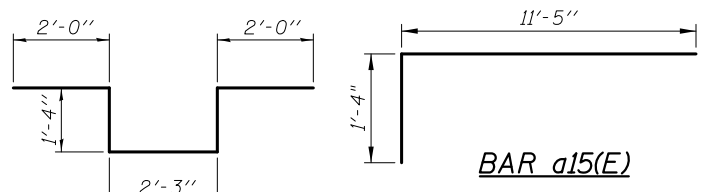
**LIGHT POLE FOUNDATION PLAN**

Cost of anchor bolts is included with Concrete Superstructure.



**1" ANCHOR BOLT**

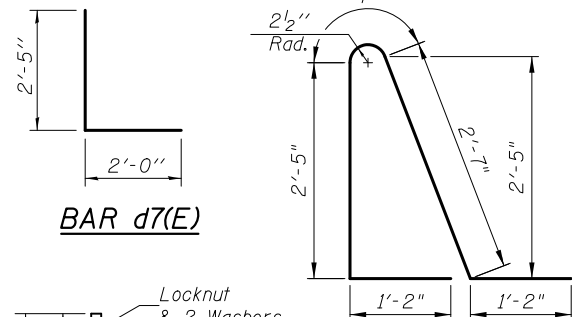
Cost included with Concrete Superstructure



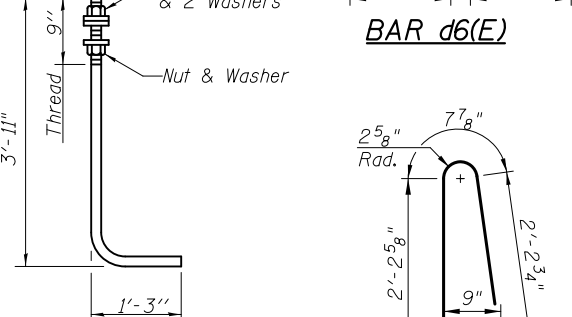
**BAR a15(E)**



**BAR d3(E)**



**BAR d7(E)**



**BAR d6(E)**



**BAR d(E)**

**ANCHOR ROD**

Diameter as specified for light poles. (ASTM F 1554 Grade 105)

**ANCHORAGE SLABS  
BILL OF MATERIAL**

Bar	No.	Size	Length	Shape
a15(E)	123	#6	12'-9"	[L-shaped]
a16(E)	123	#5	11'-5"	[L-shaped]
b15(E)	56	#5	18'-8"	[Horizontal]
b16(E)	72	#5	27'-9"	[Horizontal]
b17(E)	12	#5	27'-6"	[Horizontal]
d(E)	122	#5	5'-7"	[Hooked]
d3(E)	10	#6	8'-11"	[Hooked]
d6(E)	122	#5	7'-11"	[Hooked]
d7(E)	6	#6	4'-5"	[Hooked]
e15(E)	16	#4	16'-10"	[Horizontal]
e16(E)	32	#4	18'-9"	[Horizontal]
e17(E)	4	#8	18'-9"	[Horizontal]
e18(E)	2	#8	16'-10"	[Horizontal]

ITEM	UNIT	QUANTITY
Concrete Superstructure	Cu. Yds.	78.3
Protective Coat	Sq. Yd.	174
Reinforcement Bars, Epoxy Coated	Pound	10,110
Form Liner Textured Surface, Special	Sq. Ft.	146

Bars indicated thus 8x2 -#5 etc. indicates 8 lines of bars with 2 length per line

**CIVILTECH**  
 450 E Devon Ave, Suite 300  
 Itasca, Illinois 60143  
 Tel: 630.773.3900 Fax: 630.773.3975  
 www.civiltechinc.com

DRAWN	- M. LANGE	REVISED	-
DESIGNED	- D. ATKINS	REVISED	-
CHECKED	- G. HATLESTAD	REVISED	-
DATE	- 5/3/2012	REVISED	-

**STATE OF ILLINOIS  
DEPARTMENT OF TRANSPORTATION**

**ANCHORAGE SLAB DETAILS  
ILLINOIS ROUTE 31 OVER CRYSTAL CREEK  
STRUCTURE NO. 056-0077**

SHEET NO. SA28 OF SA33 SHEETS

O.R. RTE.	SECTION	COUNTY	TOTAL SHEETS	SHEET NO.
0003	18A-2	MCHENRY	825	488
			CONTRACT NO. 60F72	

ILLINOIS FED. AID PROJECT