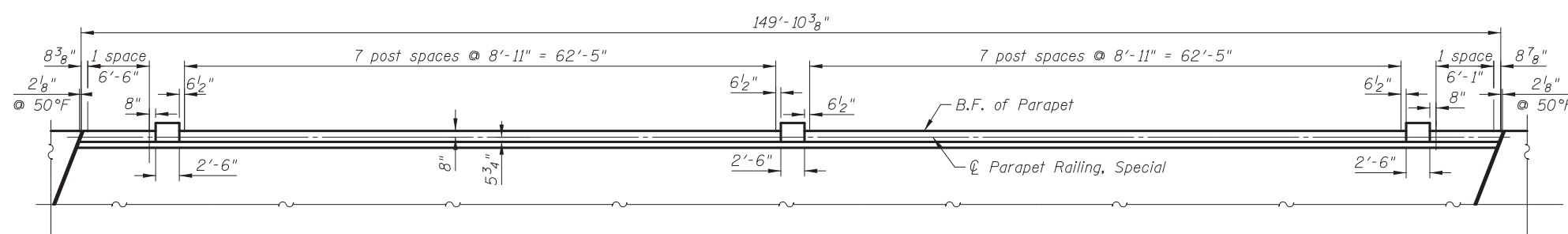
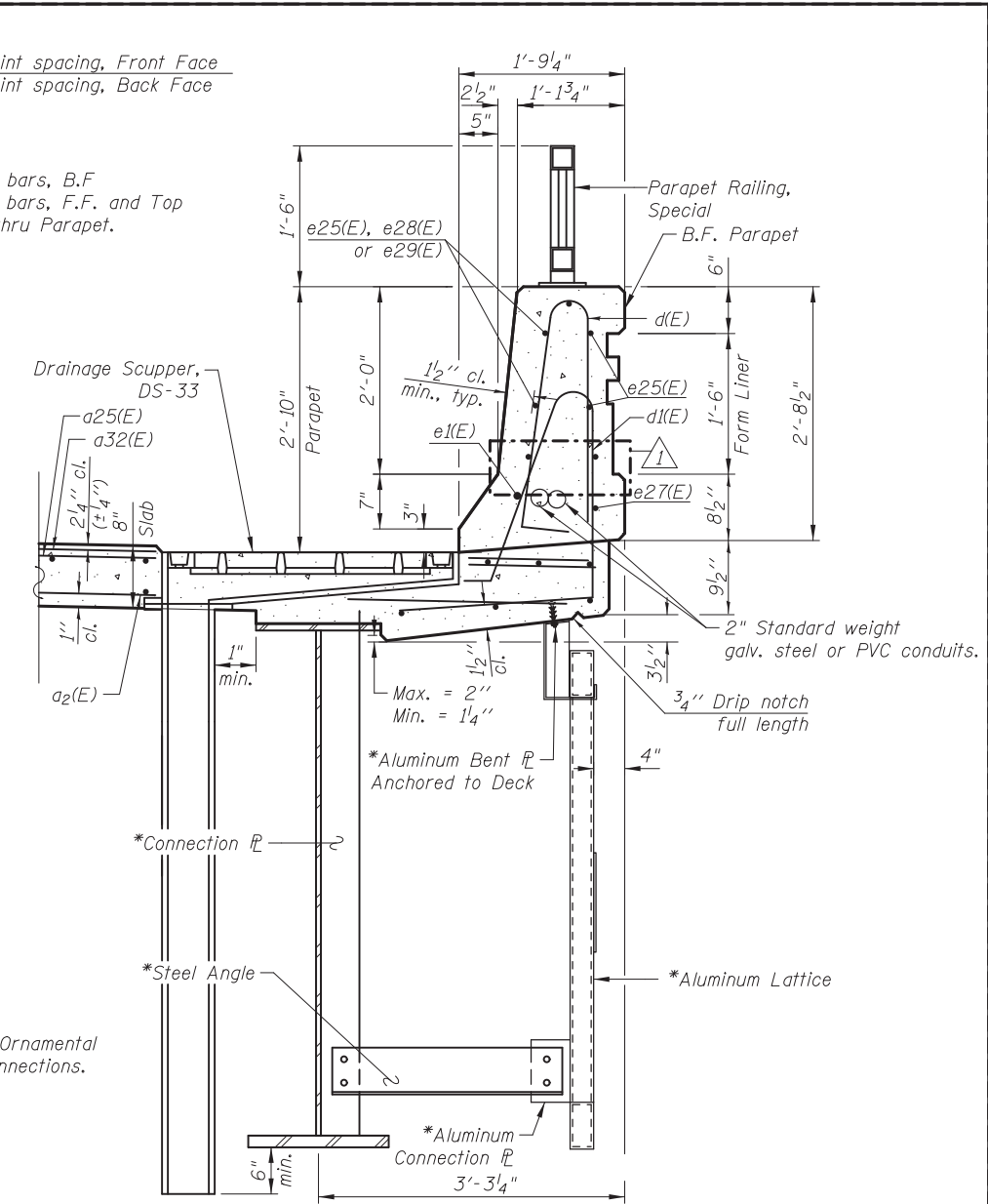
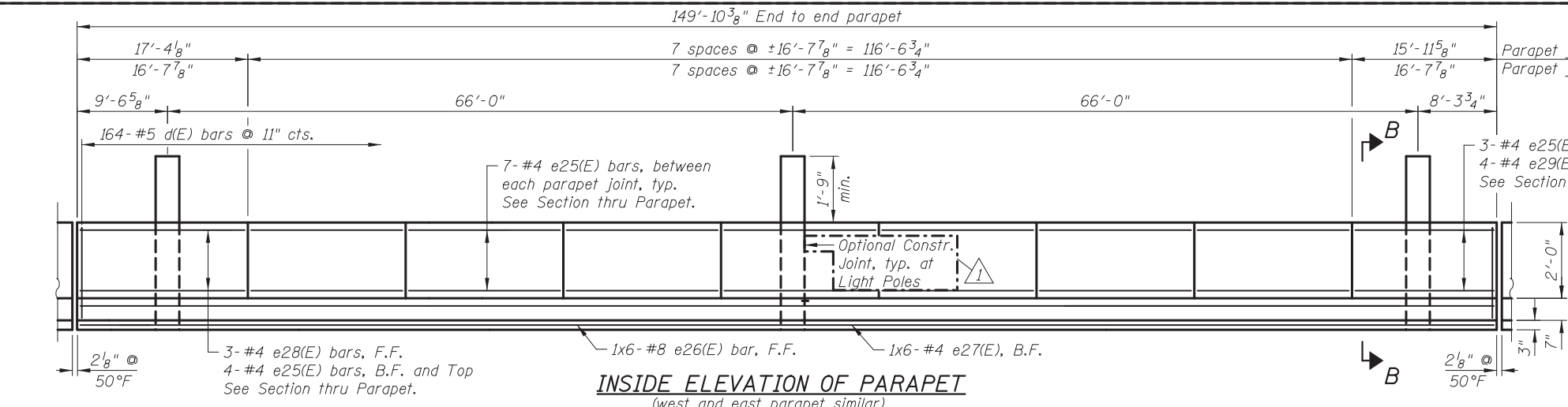
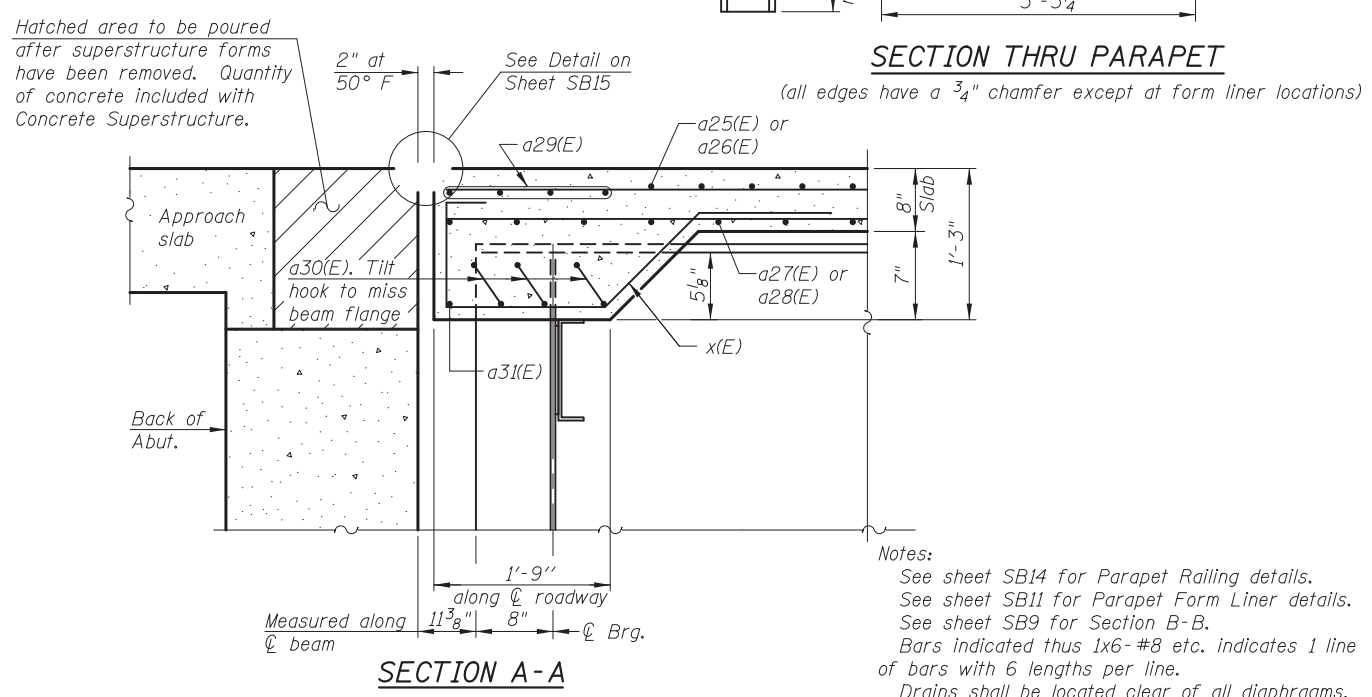
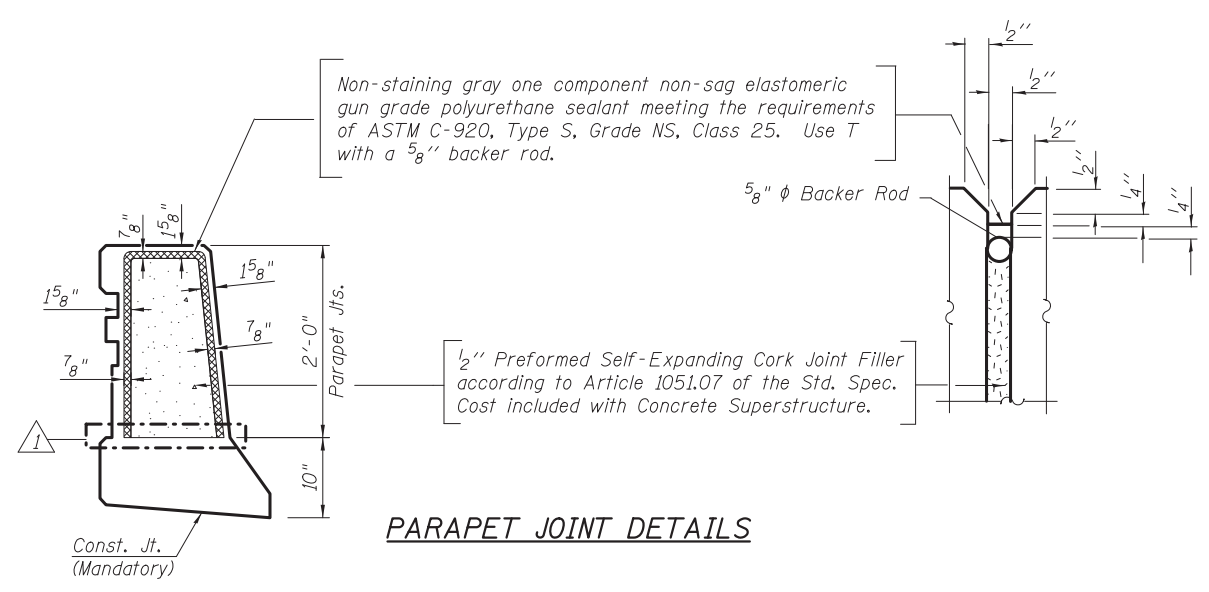


5/2/2012 10:51:08 AM I:\2154\cad\sheet\Roadway\20-STRUCTURES & WALLS\02-SN\_056-008\056008-60F72-08-55D\_rev2.dgn



**MINIMUM BAR LAP**  
 (Parapet)  
 #4 bar = 2'-0"  
 #8 bar = 5'-2"



DRAWN	- M. LANGE	REVISED	- 5/2/12 D.L.A.
DESIGNED	- D. ATKINS	REVISED	-
CHECKED	- G. HATLESTAD	REVISED	-
DATE	- 5/3/2012	REVISED	-

**STATE OF ILLINOIS**  
**DEPARTMENT OF TRANSPORTATION**

**SUPERSTRUCTURE DETAILS I**  
**ILLINOIS ROUTE 31 OVER ALGONQUIN ROAD**  
**STRUCTURE NO. 056-0081**  
 SHEET NO. SB8 OF SB32 SHEETS

O.R. RTE.	SECTION	COUNTY	TOTAL SHEETS	SHEET NO.
0003	18A-2	MCHENRY	825	501
CONTRACT NO. 60F72			ILLINOIS FED. AID PROJECT	


 450 E Devon Ave, Suite 300  
 Itasca, Illinois 60143  
 Tel: 630.773.3900 Fax: 630.773.3975  
 www.civiltechinc.com