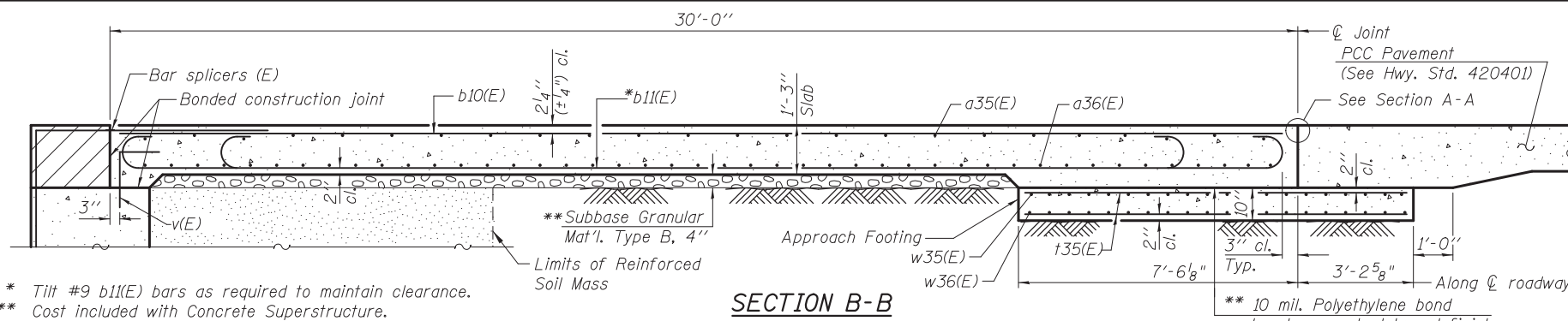


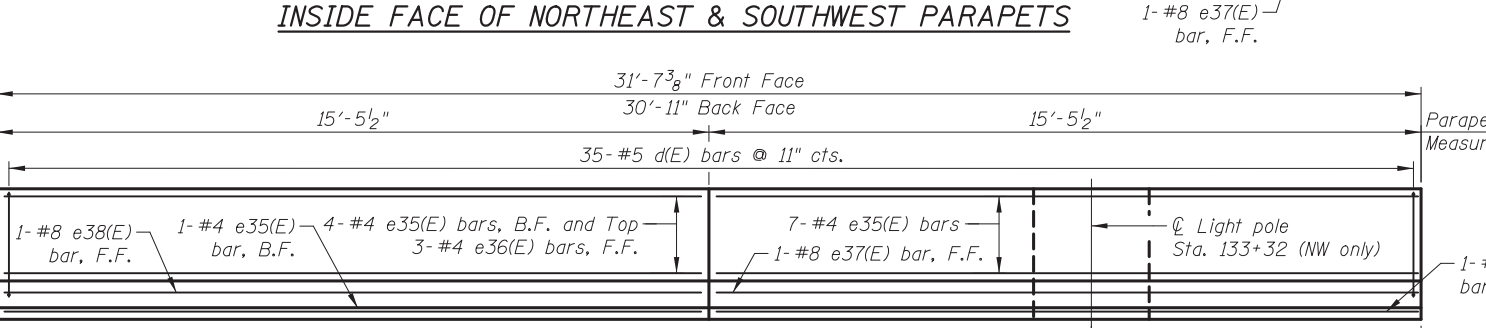
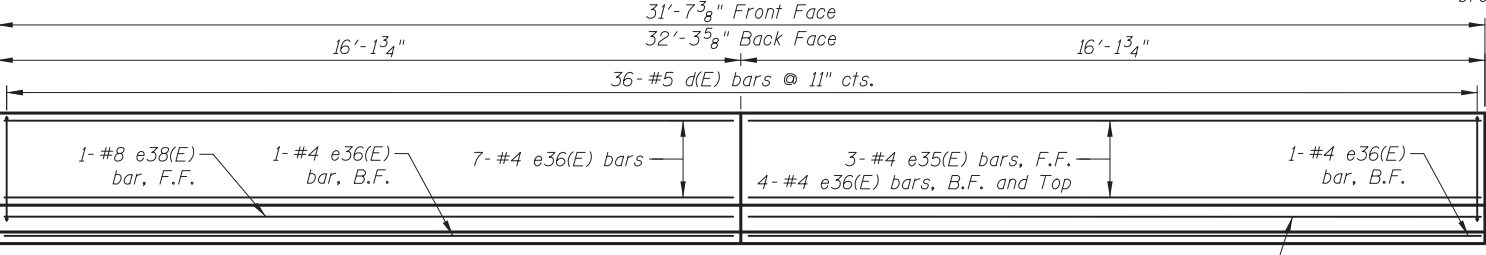
**TWO APPROACHES
BILL OF MATERIAL**

Bar	No.	Size	Length	Shape
a12(E)	100	#6	7'-10"	┌
a13(E)	16	#5	3'-6"	┌
a35(E)	150	#4	29'-9"	┌
a36(E)	368	#5	23'-5"	┌
b10(E)	128	#4	29'-8"	┌
b11(E)	378	#9	29'-9"	┌
b12(E)	8	#5	29'-8"	┌
b35(E)	8	#4	29'-8"	┌
c(E)	60	#5	2'-6"	┌
c1(E)	120	#5	2'-4"	┌
d(E)	142	#5	5'-7"	┌
d3(E)	5	#6	8'-11"	┌
d6(E)	132	#5	7'-11"	┌
d7(E)	3	#6	4'-5"	┌
e35(E)	32	#4	15'-2"	┌
e36(E)	32	#4	15'-10"	┌
e37(E)	4	#8	15'-2"	┌
e38(E)	4	#8	15'-10"	┌
t35(E)	304	#4	10'-4"	┌
w35(E)	120	#5	29'-2"	┌
w36(E)	160	#5	22'-8"	┌
Item	Unit	Quantity		
Concrete Structures	Cu. Yd.	50.2		
Concrete Superstructures	Cu. Yd.	264.5		
Bridge Deck Grooving	Sq. Yd.	480		
Protective Coat	Sq. Yd.	564		
Reinforcement Bars, Epoxy Coated	Pound	67,360		
Form Liner Textured Surface, Special	Sq. Ft.	172		

Bars indicated thus 1 x 3-#8 etc. indicates 1 line of bars with 3 lengths per line.

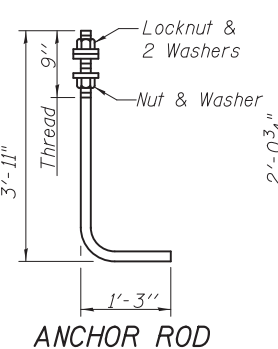


* Tilt #9 b11(E) bars as required to maintain clearance.
** Cost included with Concrete Superstructure.

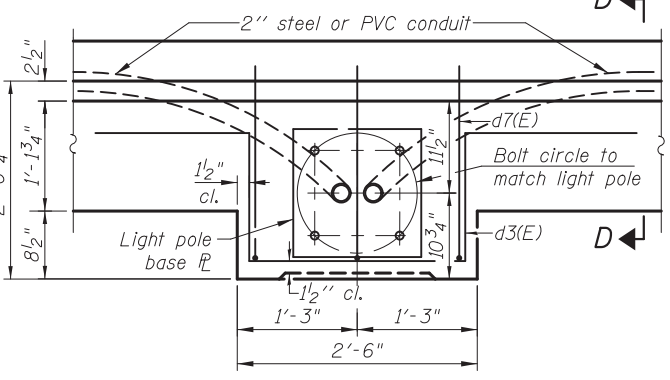


Hatched area to be poured after superstructure false work has been removed. See Abutment Sheets SB20 thru SB22.

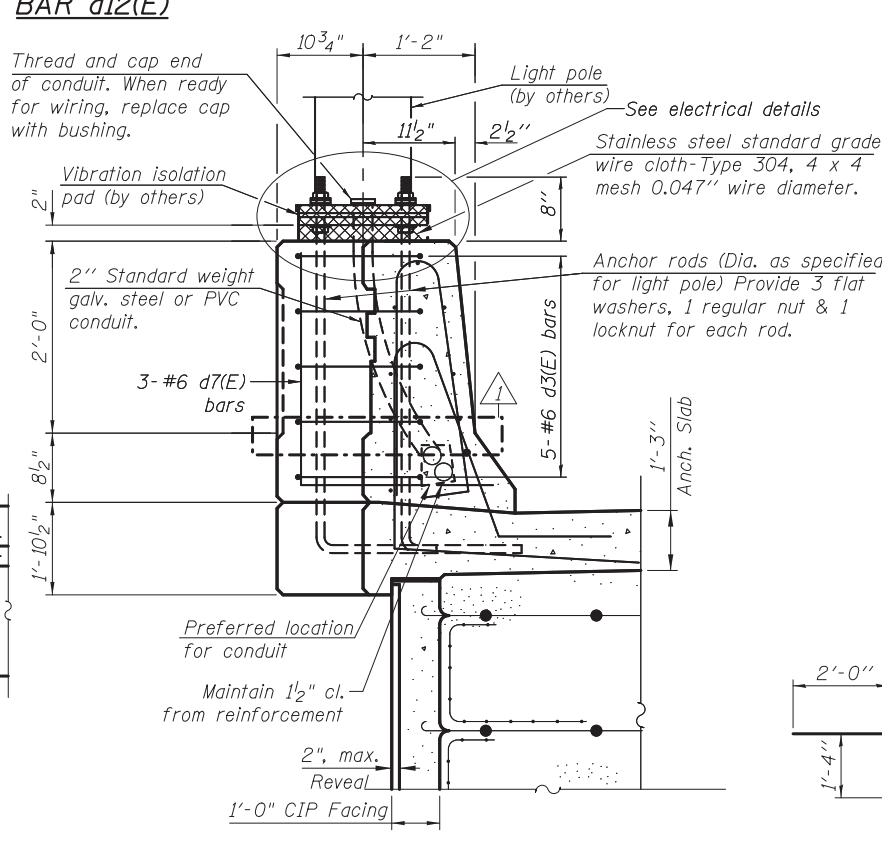
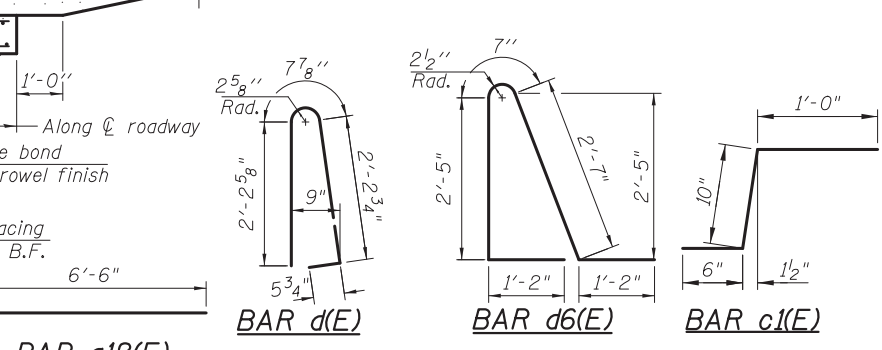
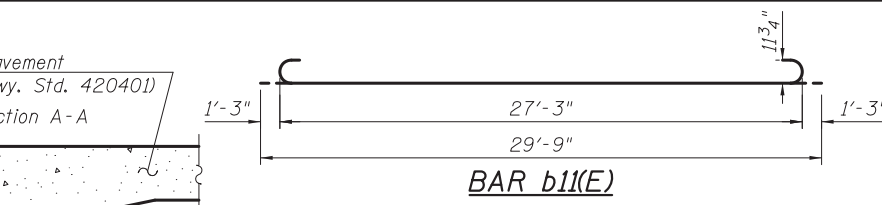
Notes:
See sheet SB12 for Section A-A.
Approach slab and parapet concrete shall be paid for as Concrete Superstructure.
Approach footing concrete shall be paid for as Concrete Structures.
Reinforcement shall be paid for as Reinforcement Bars, Epoxy Coated.
For v(E) bar details on sheet SB22.
The approach footing maximum applied service bearing pressure (Qmax) = 2.0 ksf.
For bar splicer details, see sheet SB28.
Cost of excavation for approach footing included with Concrete Structures.
For additional parapet details, see sheet SB11 for dimensions and for parapet formliner details and sheet SB26 for Parapet Joint Details.
Cost of anchor rods and conduit is included with Concrete Superstructure.



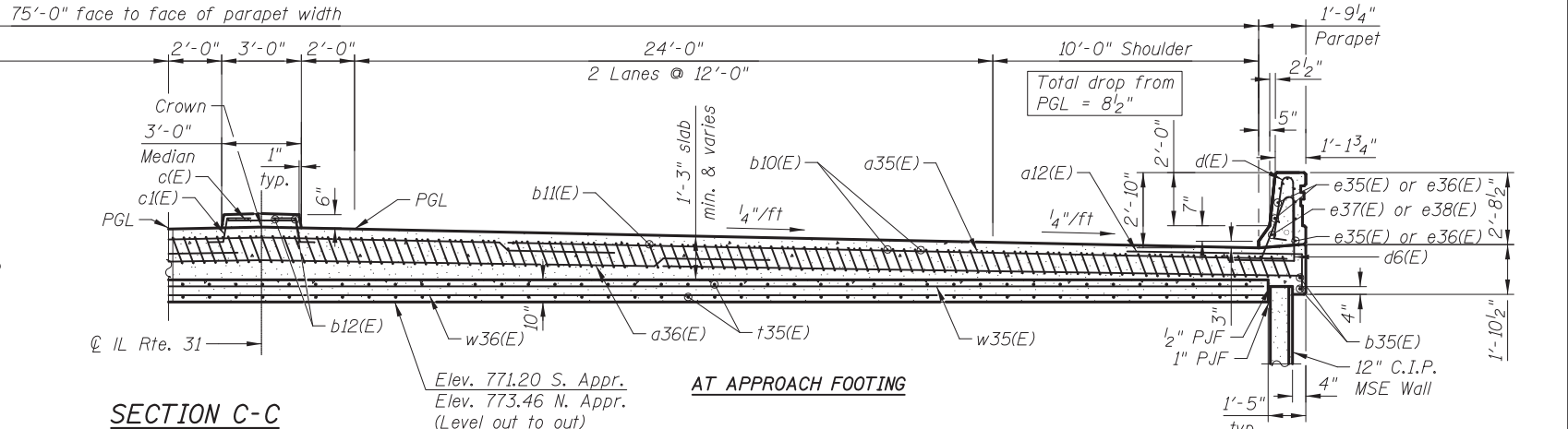
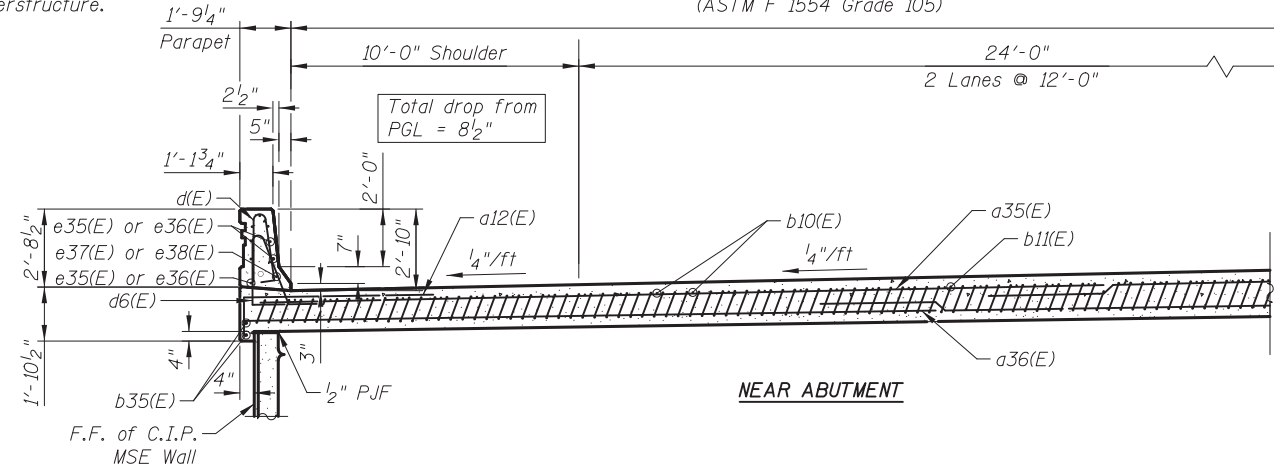
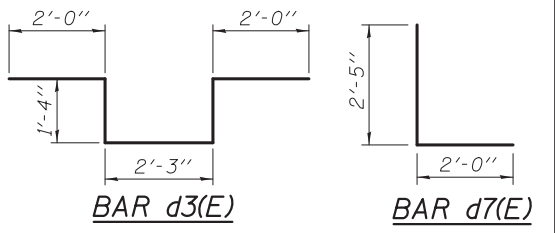
Diameter as specified for light poles. (ASTM F 1554 Grade 105)



LIGHT POLE FOUNDATION PLAN



SECTION D-D



SECTION C-C

**BRIDGE APPROACH SLAB DETAILS
ILLINOIS ROUTE 31 OVER ALGONQUIN ROAD
STRUCTURE NO. 056-0081**

CIVILTECH
450 E Devon Ave, Suite 300
Itasca, Illinois 60143
Tel: 630.773.3900 Fax: 630.773.3975
www.civiltechinc.com

DRAWN	- M. LANGE	REVISED	- 5/3/12 D.L.A.
DESIGNED	- D. ATKINS	REVISED	-
CHECKED	- G. HATLESTAD	REVISED	-
DATE	- 5/3/2012	REVISED	-

**STATE OF ILLINOIS
DEPARTMENT OF TRANSPORTATION**

O.R. RTE.	SECTION	COUNTY	TOTAL SHEETS	SHEET NO.
0003	18A-2	MCHENRY	825	506
			CONTRACT NO. 60F72	

ILLINOIS FED. AID PROJECT

10:53:28 AM 5/21/2012 I:\2154\cad\sheet\Roadway\20-STR\Structures & Walls\02-SN 056-0081\0560081-60F72-13-APD_Lrv2.dgn