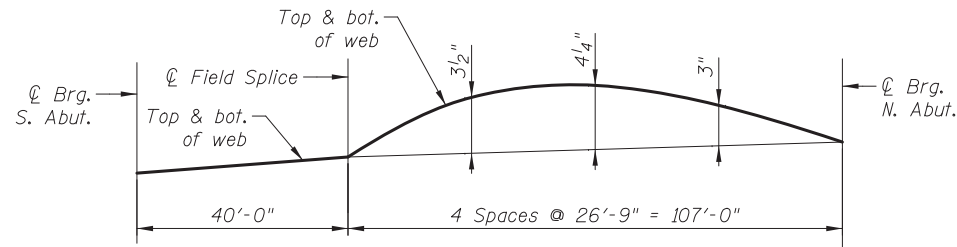


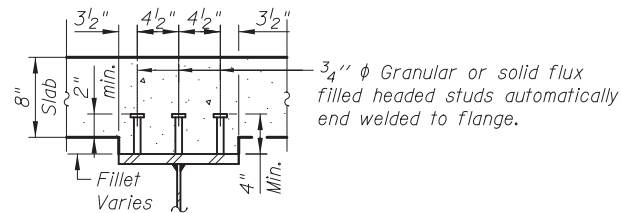
TOP OF WEB ELEVATIONS

(For Fabrication Only)

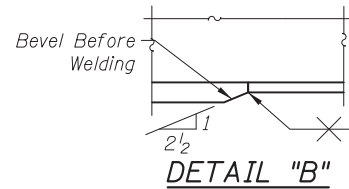
GIRDER	℄ Brg. S. Abut.	℄ Field Splice	℄ Brg. N. Abut.
1	773.25	774.15	774.87
2	773.38	774.28	775.00
3	773.52	774.41	775.13
4	773.65	774.54	775.27
5	773.78	774.68	775.40
6	773.75	774.64	775.36
7	773.55	774.44	775.16
8	773.34	774.24	774.96
9	773.14	774.04	774.76
10	772.94	773.84	774.56



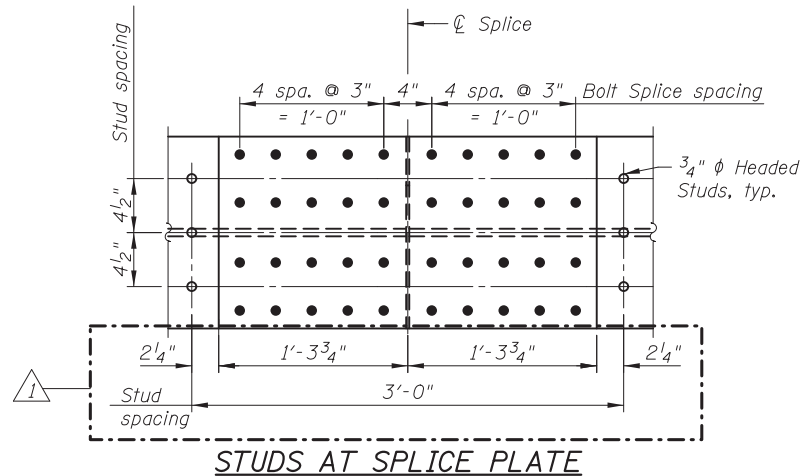
CAMBER DIAGRAM



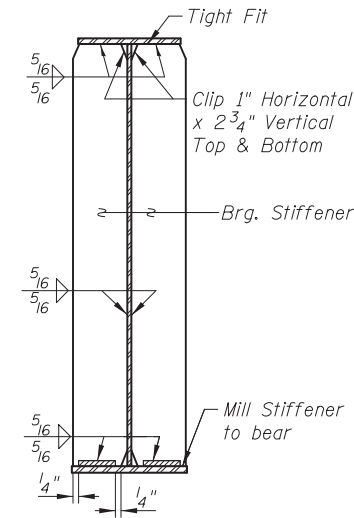
SECTION A-A



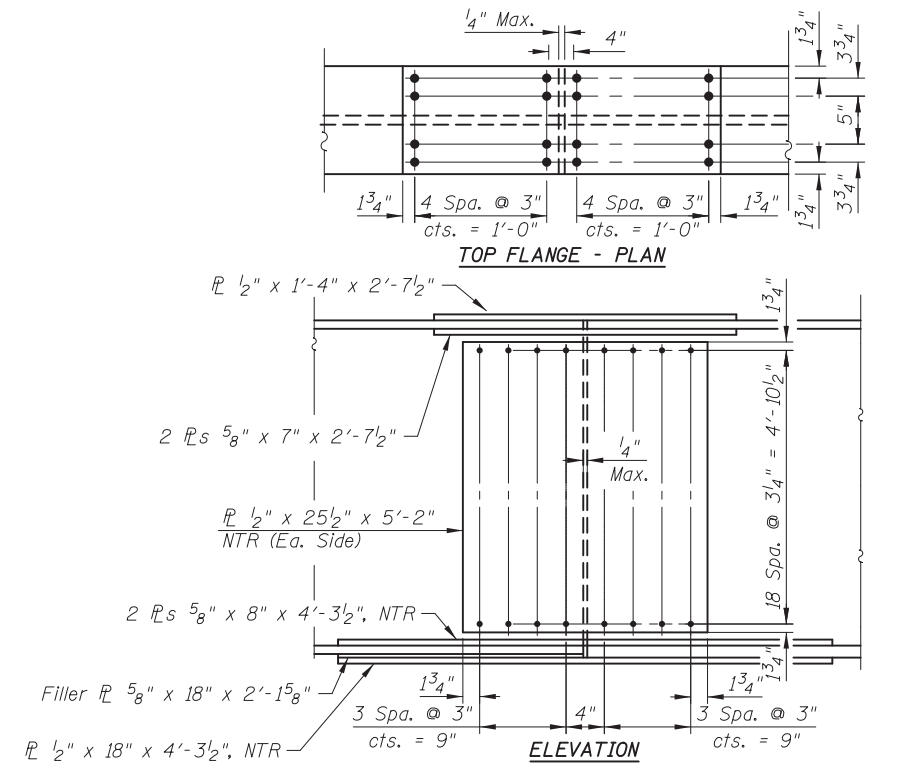
DETAIL "B"



STUDS AT SPLICE PLATE

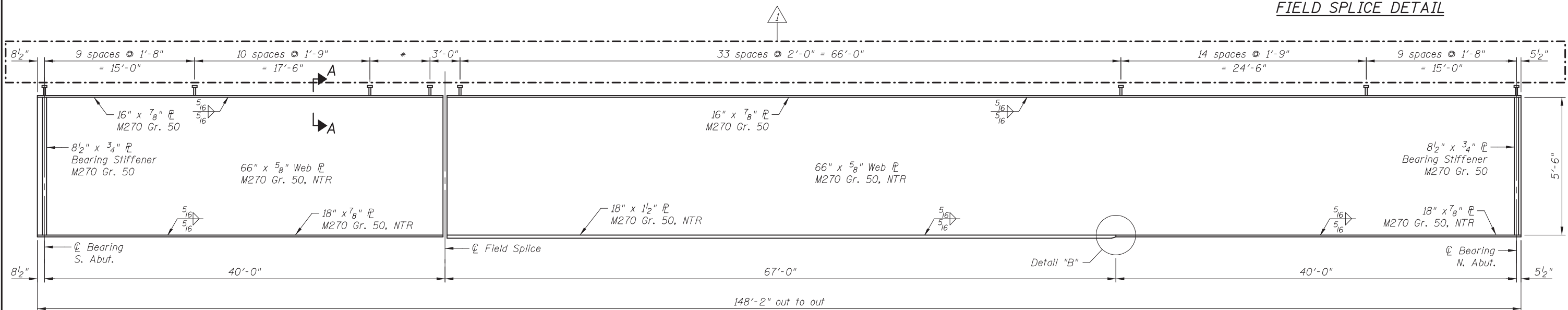


SECTION AT ABUTMENT



TOP FLANGE - PLAN
ELEVATION
BOTTOM FLANGE
FIELD SPLICE DETAIL

Notes:
Load carrying components designated "NTR" shall conform to the Impact Testing Requirements, Zone 2.
HS Bolts shall be 7/8" φ AASHTO M164/ASTM A325, with 15/16" φ holes.
All splices are symmetrical about ℄ splice except for fills.
Splice plates shall be AASHTO M270 Gr. 50.
Refer to sheets SB10 and SB11 for the Ornamental Aluminum Lattice for the West Fascia of Beam 1 and the East Fascia of Beam 10.



GIRDER ELEVATION

BILL OF MATERIAL

Item	Unit	Total
Furnishing and Erecting Structural Steel	L. Sum	0.36
Stud Shear Connectors	Each	2,400

5/23/2012 10:48:44 AM I:\2154\cad\sheet\Roadway\20-Structures & Walls\02-SN 056-0081\0560081-60F72-R-PGD_r_rev2.dgn