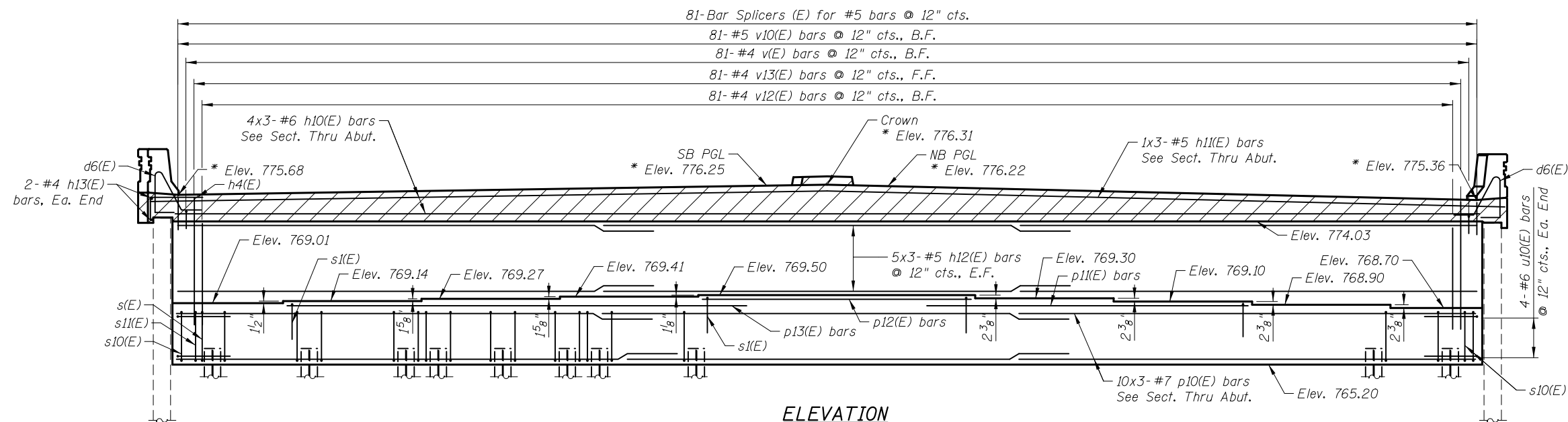


PILE DATA

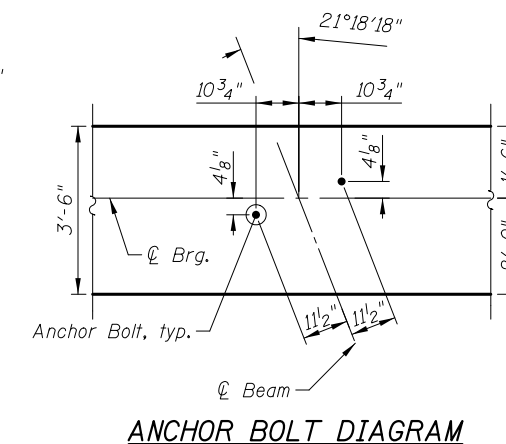
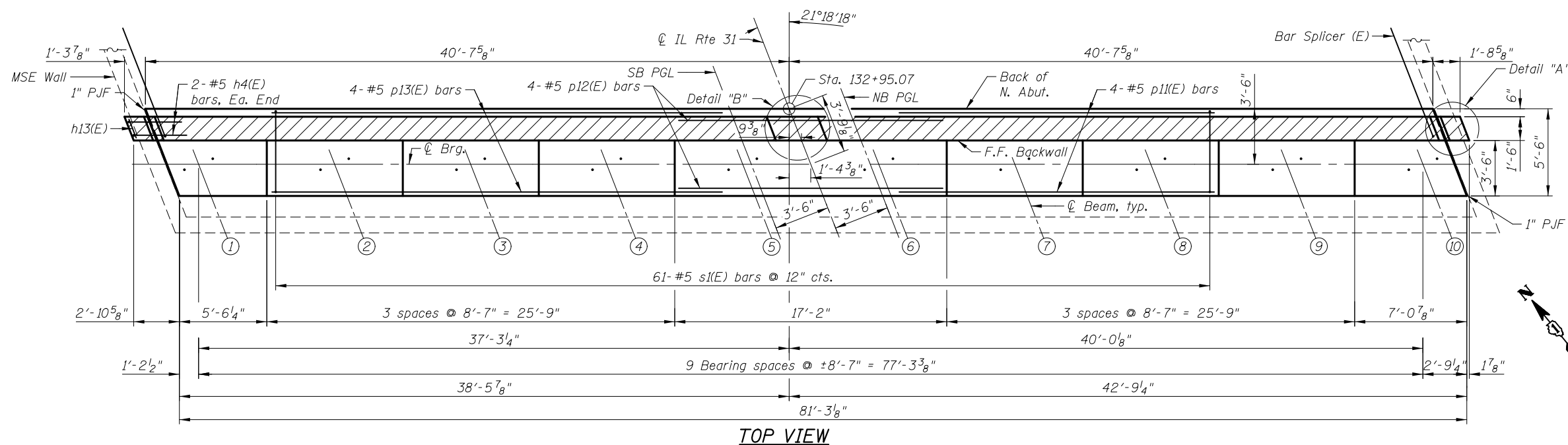
Type: Steel HP 14x73
 Nominal Required Bearing: 480 kips
 Factored Resistance Available: 264 kips
 Est. Length: 83 feet
 No. Production Piles: 24
 No. Test Piles: 1

MINIMUM BAR LAP

#5 bar = 3'-8"
 #6 bar = 4'-5"
 #7 bar = 5'-10"



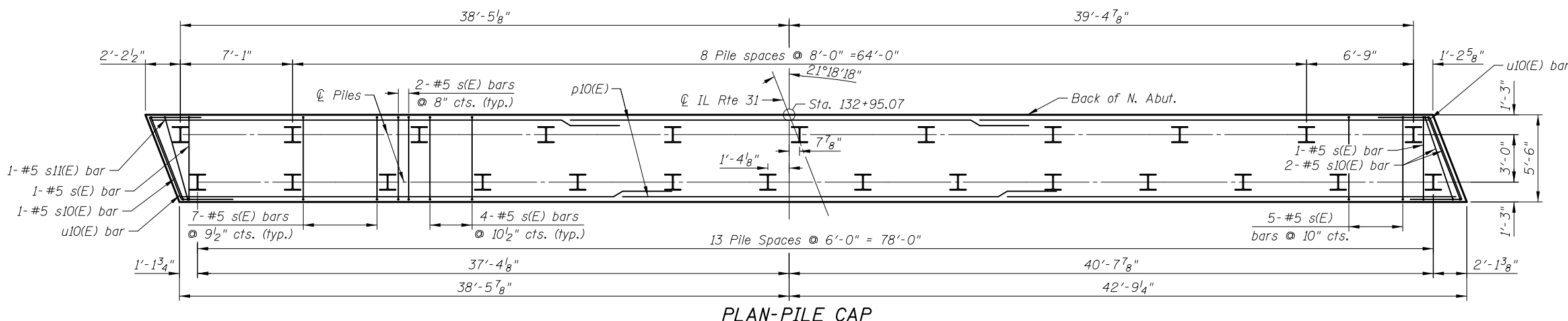
* Elevations given at F.F. of backwall.



Hatched area to be poured after superstructure false work has been removed.

Parapets to be poured with the Approach Slabs.

See Sheet SB22 for Details A & B.



4/18/03 PM
 I:\2154\cad\sheet\Roadway\20-Structures & Walls\02-SN_056-008\056008-60F72-2-NAB.dgn
 5/2/2012

CIVILTECH
 450 E Devon Ave, Suite 300
 Itasca, Illinois 60143
 Tel: 630.773.3900 Fax: 630.773.3975
 www.civiltechinc.com

DRAWN	- M. LANGE	REVISED	-
DESIGNED	- D. ATKINS	REVISED	-
CHECKED	- G. HATLESTAD	REVISED	-
DATE	- 5/3/2012	REVISED	-

**STATE OF ILLINOIS
 DEPARTMENT OF TRANSPORTATION**

**NORTH ABUTMENT
 ILLINOIS ROUTE 31 OVER ALGONQUIN ROAD
 STRUCTURE NO. 056-0081**
 SHEET NO. SB21 OF SB32 SHEETS

O.R. RTE.	SECTION	COUNTY	TOTAL SHEETS	SHEET NO.
0003	18A-2	MCHENRY	825	514
				CONTRACT NO. 60F72

ILLINOIS FED. AID PROJECT