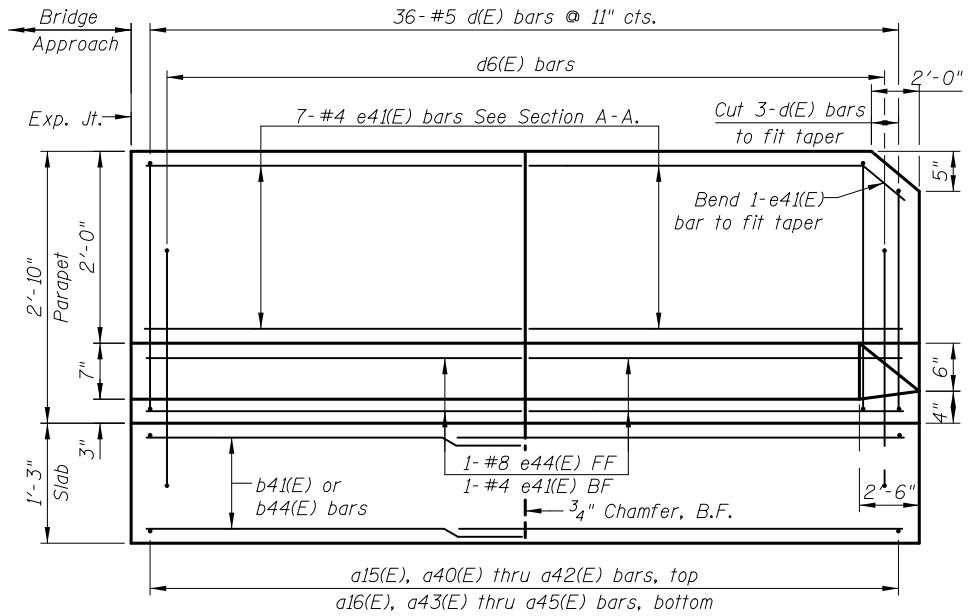
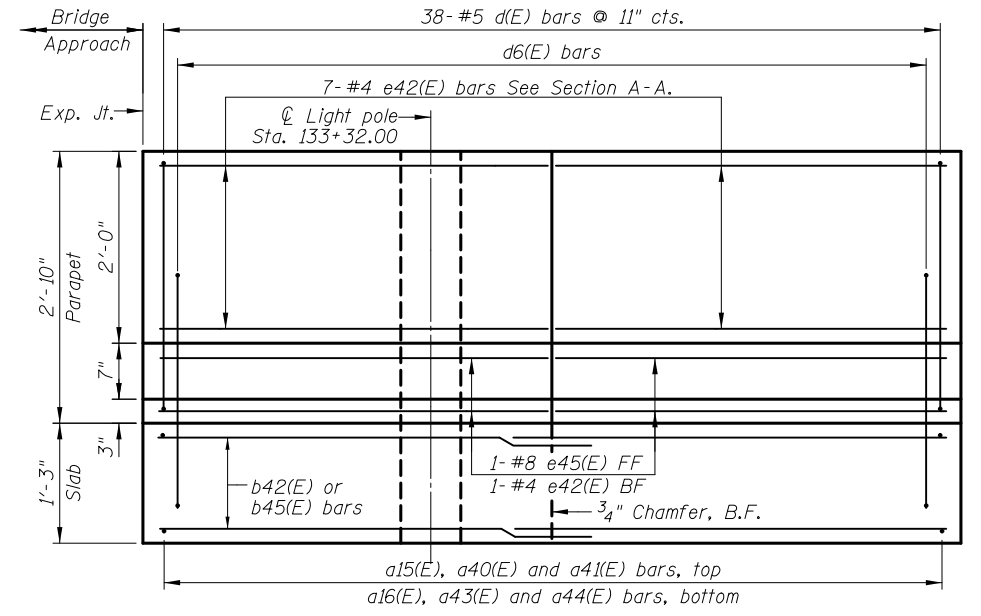


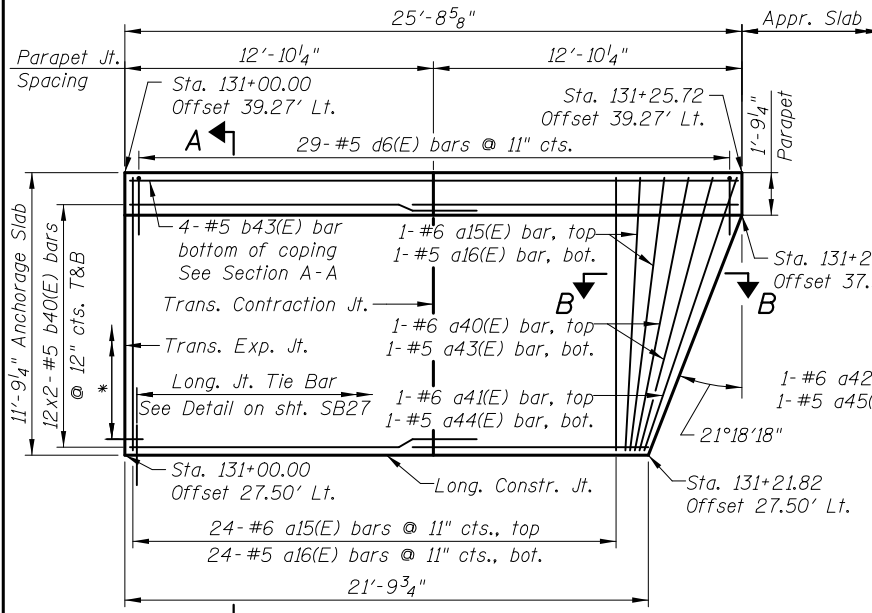
ELEVATION SW ANCHORAGE SLAB
(Front face of parapet)



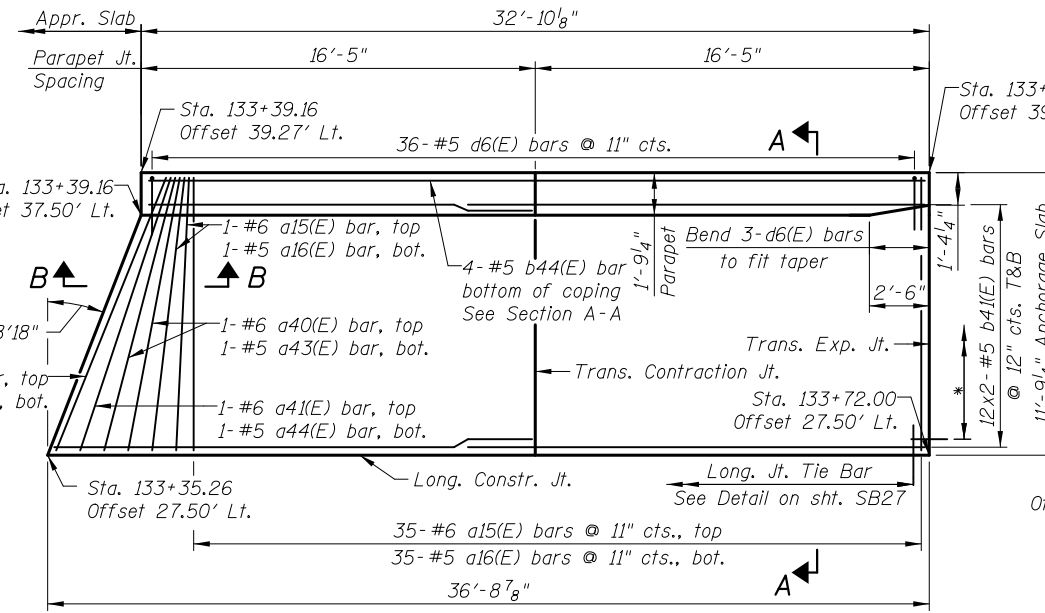
ELEVATION NW ANCHORAGE SLAB
(Front face of parapet)



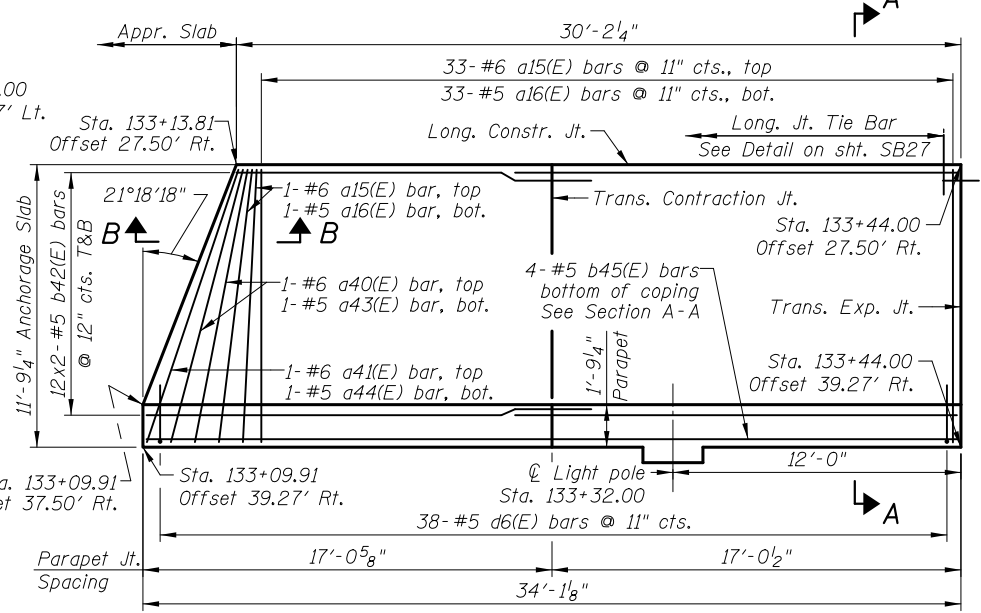
ELEVATION NE ANCHORAGE SLAB
(Front face of parapet)



PLAN SW ANCHORAGE SLAB



PLAN NW ANCHORAGE SLAB

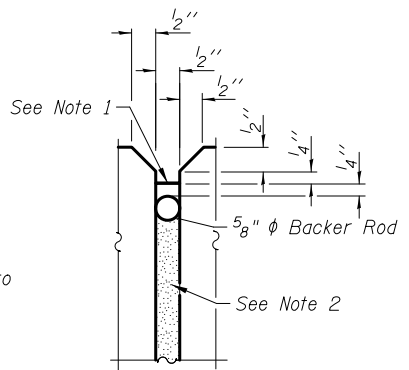


PLAN NE ANCHORAGE SLAB

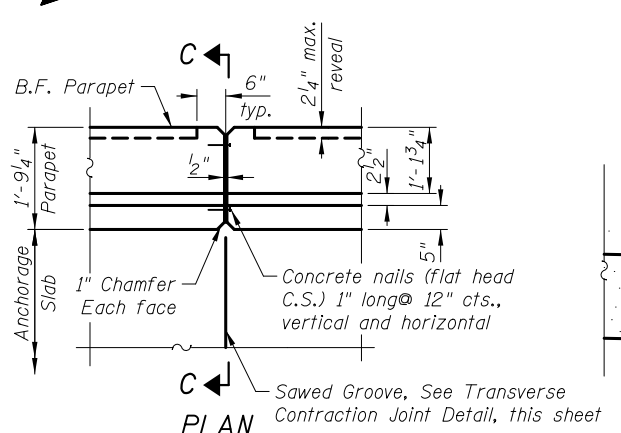
MINIMUM BAR LAP
#5 bar = 3'-3"

Parapet Joint Notes:
1. Non-staining gray one component non-sag elastomeric gun grade polyurethane sealant meeting the requirements of ASTM C-920, Type S, Grade NS, Class 25, use T with a 5/8" backer rod.
2. 1/2" Preformed Self-Expanding Cork Joint Filler according to Article 1051.07 of the Std. Spec. Cost included with Concrete Superstructure.

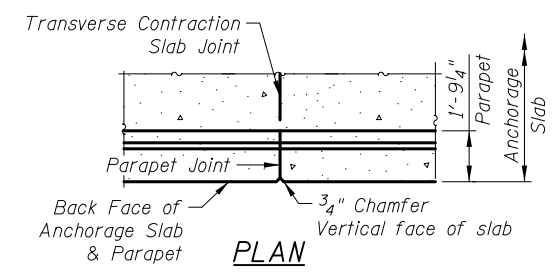
Sheet Notes:
See sheet SB27 for Bill of Material, Reinforcement Schedule and Bar Diagrams.
See sheet SB27 for Section A-A and B-B.
* Dowels into PCC Shld. See Transverse Expansion Joint Detail on Sheet SB27



PARAPET JOINT DETAILS



SECTION C-C



TRANSVERSE CONTRACTION JOINT

See Art. 420.05(c) of Standard Specifications

5/2/2012 4:18:08 PM I:\2154\cad\sheet\Roadway\20-Structures & Walls\02-SN 056-008\056008-60F72-26-ANS.rev.dgn

CIVILTECH
450 E Devon Ave, Suite 300
Itasca, Illinois 60143
Tel: 630.773.3900 Fax: 630.773.3975
www.civiltechinc.com

DRAWN	- M. LANGE	REVISED	-
DESIGNED	- D. ATKINS	REVISED	-
CHECKED	- G. HATLESTAD	REVISED	-
DATE	- 5/3/2012	REVISED	-

STATE OF ILLINOIS
DEPARTMENT OF TRANSPORTATION

ANCHORAGE SLABS
ILLINOIS ROUTE 31 OVER ALGONQUIN ROAD
STRUCTURE NO. 056-0081
SHEET NO. SB26 OF SB32 SHEETS

O.R. RTE.	SECTION	COUNTY	TOTAL SHEETS	SHEET NO.
0003	18A-2	MCHENRY	825	519
CONTRACT NO. 60F72				
ILLINOIS FED. AID PROJECT				