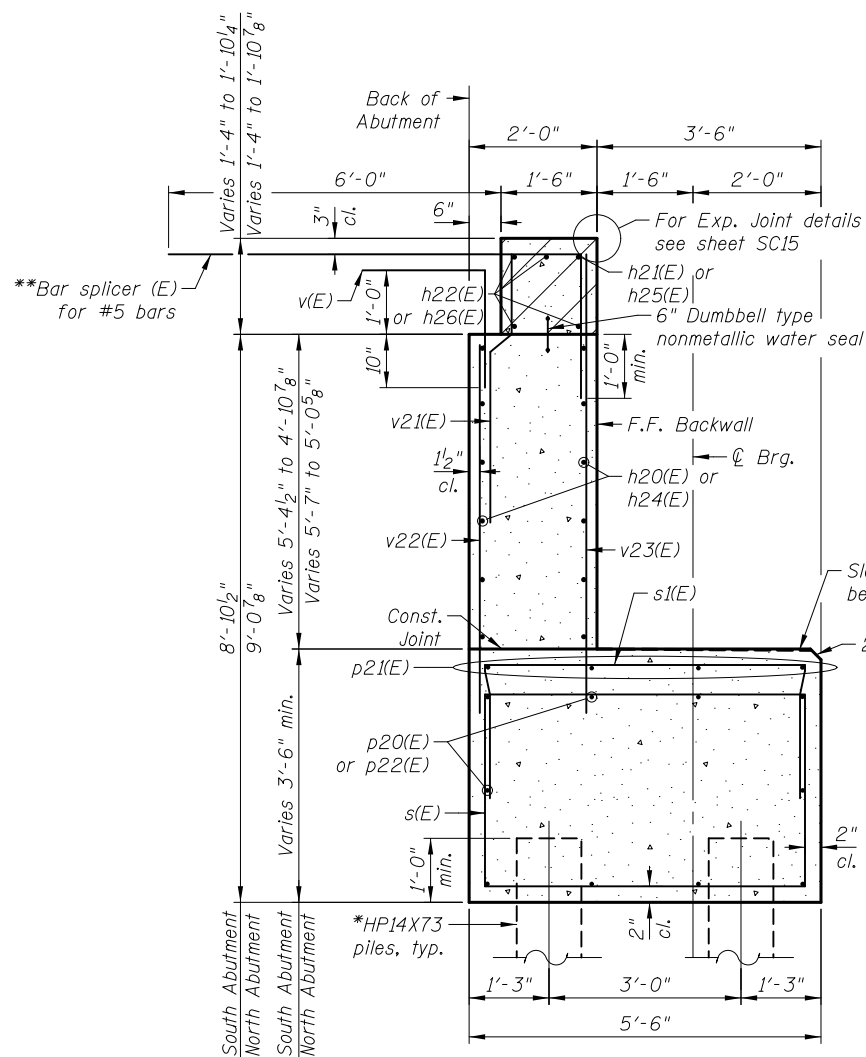


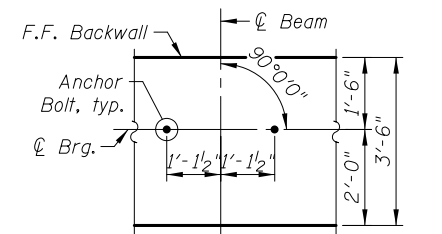
4/20/23 PM 4:20:23 PM I:\2154\cad\sheet\Roadway\20-Structures & Walls\04-SN 056-0079\0560079-60F72-2-ABD.dgn



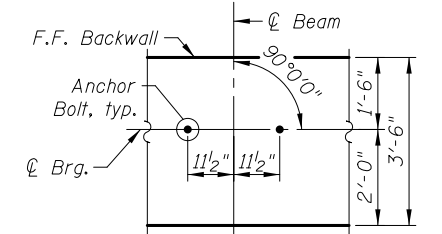
SECTION THRU ABUTMENT

\* Piles shall be driven prior to placement of the reinforced select fill and coated with coal tar epoxy from the bottom of the select fill to 1" above the base of the abutment. The cost of the coal tar epoxy coating shall be included with the cost of the Furnishing Piles.  
 \*\* Bar Splicers shall be parallel to the Approach Slab reinforcement.

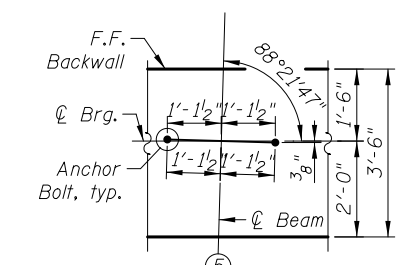
Notes:  
 Parapets to be poured with the Approach Slabs.  
 Concrete Sealer shall be applied to the designated areas of the backwalls and bridge seats of the abutments.  
 Space reinforcement in cap to miss anchor bolts.  
 For details of Bar Splicers see sheet SC26.  
 For Pile Details see sheet SC22.



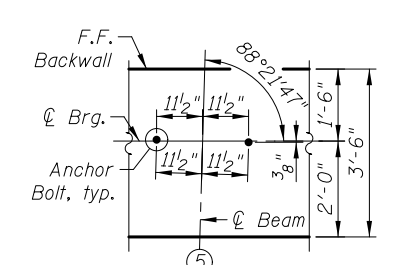
ANCHOR BOLT DIAGRAM N. ABUT. BEAMS 1 THRU 4



ANCHOR BOLT DIAGRAM S. ABUT. BEAMS 1 THRU 4



ANCHOR BOLT DIAGRAM N. ABUT. BEAM 5

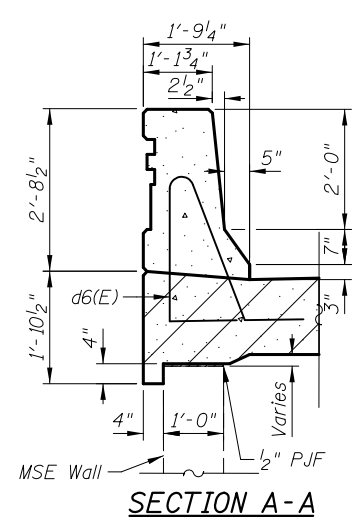


ANCHOR BOLT DIAGRAM S. ABUT. BEAM 5

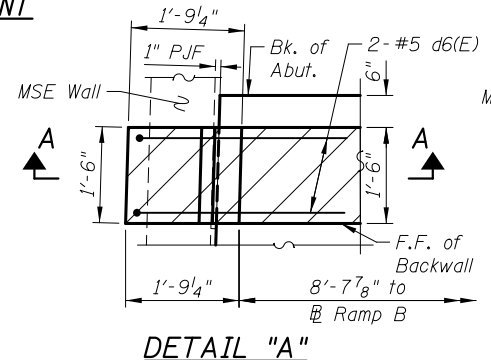
**BILL OF MATERIAL**  
 (For 2 Abutments)

Bar	No.	Size	Length	Shape
d6(E)	8	#5	7'-11"	⌒
h4(E)	8	#5	4'-7"	⌒
h20(E)	12	#5	31'-0"	—
h21(E)	2	#5	18'-7"	—
h22(E)	8	#6	18'-11"	—
h23(E)	8	#4	1'-2"	—
h24(E)	24	#5	19'-1"	—
h25(E)	2	#5	20'-6"	—
h26(E)	8	#6	20'-10"	—
p20(E)	10	#7	31'-0"	—
p21(E)	8	#5	13'-2"	—
p22(E)	10	#7	34'-11"	—
s(E)	80	#5	17'-7"	⌒
s1(E)	28	#4	9'-4"	⌒
u20(E)	8	#6	12'-9"	⌒
u21(E)	10	#6	12'-9"	⌒
v(E)	68	#5	3'-9"	⌒
v21(E)	68	#4	3'-8"	⌒
v22(E)	68	#4	6'-7"	—
v23(E)	68	#4	8'-0"	—
Item	Unit	Quantity		
Concrete Structures	Cu. Yd.	76.7		
Concrete Superstructures	Cu. Yd.	6.5		
Bridge Deck Grooving	Sq. Yd.	11		
Protective Coat	Sq. Yd.	11		
Reinforcement Bars, Epoxy Coated	Pound	6,080		
Furnishing Steel Piles, HP14X73	Foot	1,599		
Driving Piles	Foot	1,599		
Test Pile Steel HP14X73	Each	2		
Pile Shoes	Each	27		
Concrete Sealer	Sq. Ft.	581		

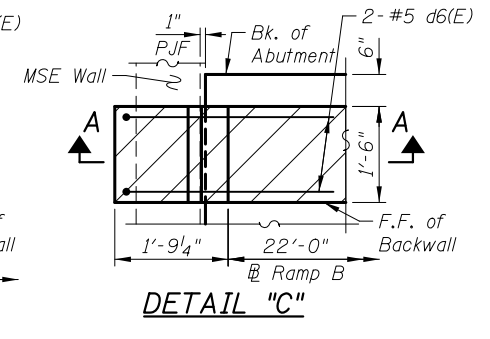
Bars indicated thus 4x3-#5 etc. indicate 4 lines of bars with 3 lengths per line.



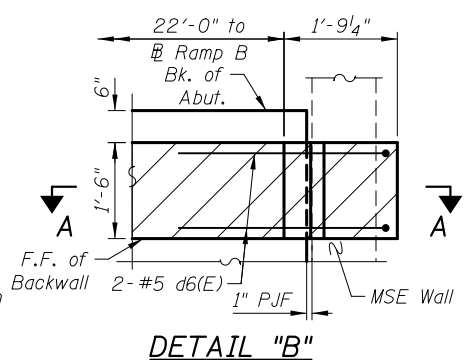
SECTION A-A



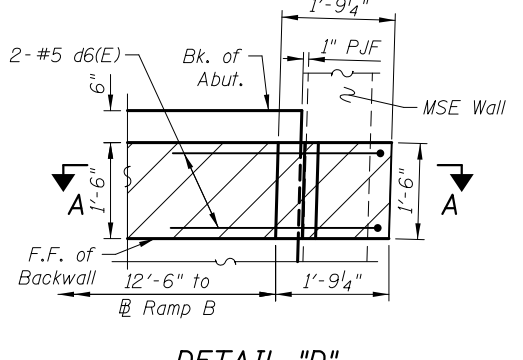
DETAIL "A"



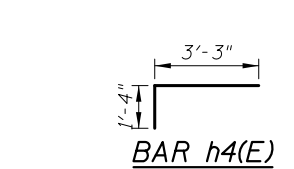
DETAIL "C"



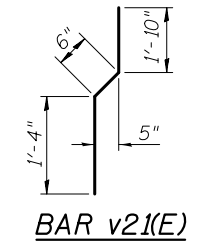
DETAIL "B"



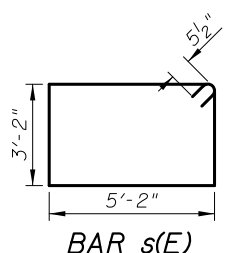
DETAIL "D"



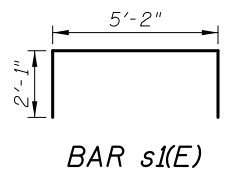
BAR h4(E)



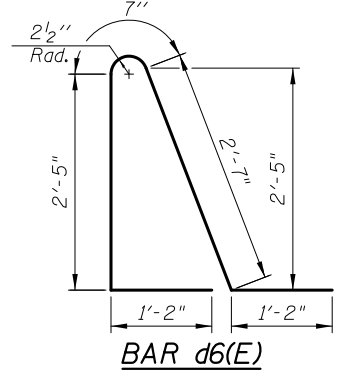
BAR v21(E)



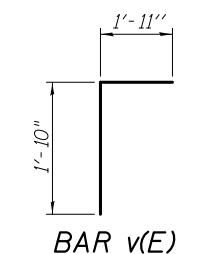
BAR s(E)



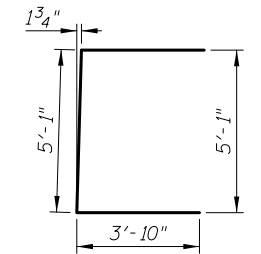
BAR s1(E)



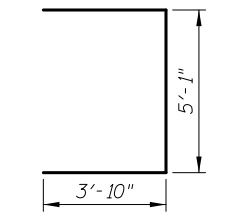
BAR d6(E)



BAR v(E)



BAR u20(E)



BAR u21(E)

Hatched area to be poured after superstructure false work has been removed. Quantity of concrete included with Concrete Superstructure.

**CIVILTECH**  
 450 E Devon Ave, Suite 300  
 Itasca, Illinois 60143  
 Tel: 630.773.3900 Fax: 630.773.3975  
 www.civiltechinc.com

DRAWN	- M. LANGE	REVISED	-
DESIGNED	- D. ATKINS	REVISED	-
CHECKED	- G. HATLESTAD	REVISED	-
DATE	- 5/3/2012	REVISED	-

**STATE OF ILLINOIS**  
**DEPARTMENT OF TRANSPORTATION**

**ABUTMENT DETAILS**  
**NB EXIT RAMP (RAMP B) OVER CRYSTAL CREEK**  
**STRUCTURE NO. 056-0079**  
 SHEET NO. SC21 OF SC29 SHEETS

O.R. RTE.	SECTION	COUNTY	TOTAL SHEETS	SHEET NO.
0003	18A-2	MCHENRY	825	546
CONTRACT NO. 60F72				
ILLINOIS FED. AID PROJECT				