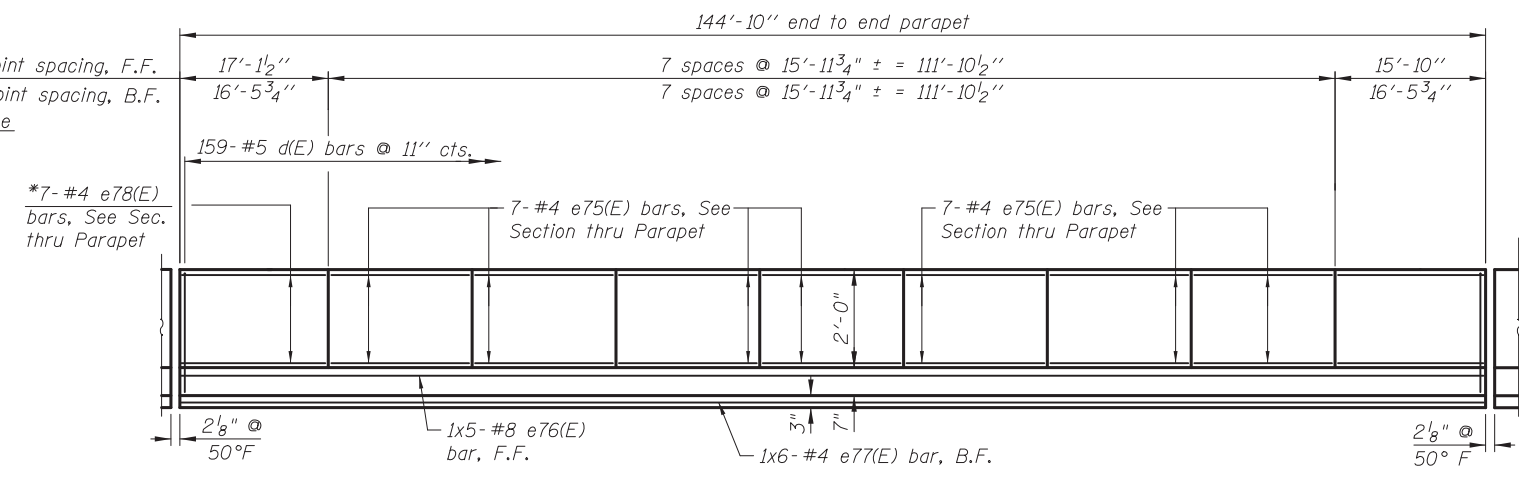
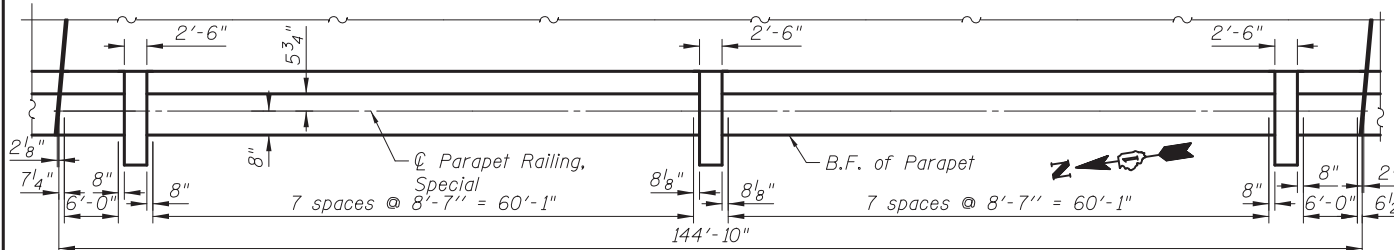


**INSIDE ELEVATION OF WEST PARAPET**

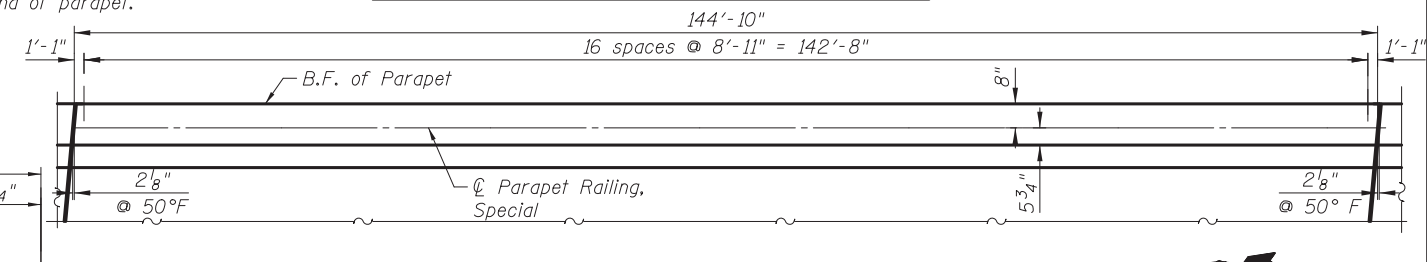


**INSIDE ELEVATION OF EAST PARAPET**

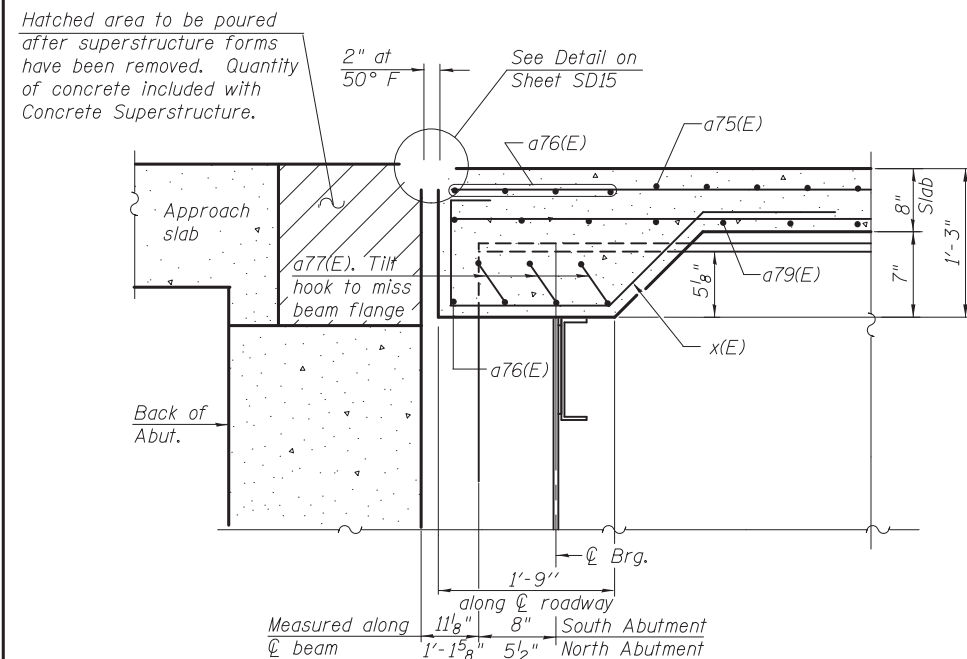
\* Field cut to fit and use remainder of bars in opposite end of parapet.



**PLAN - WEST PARAPET AND PARAPET RAILING**  
(Parapet Railing Post Spacing along C Parapet Railing)



**PLAN - EAST PARAPET AND PARAPET RAILING**  
(Parapet Railing Post Spacing along C Parapet Railing)

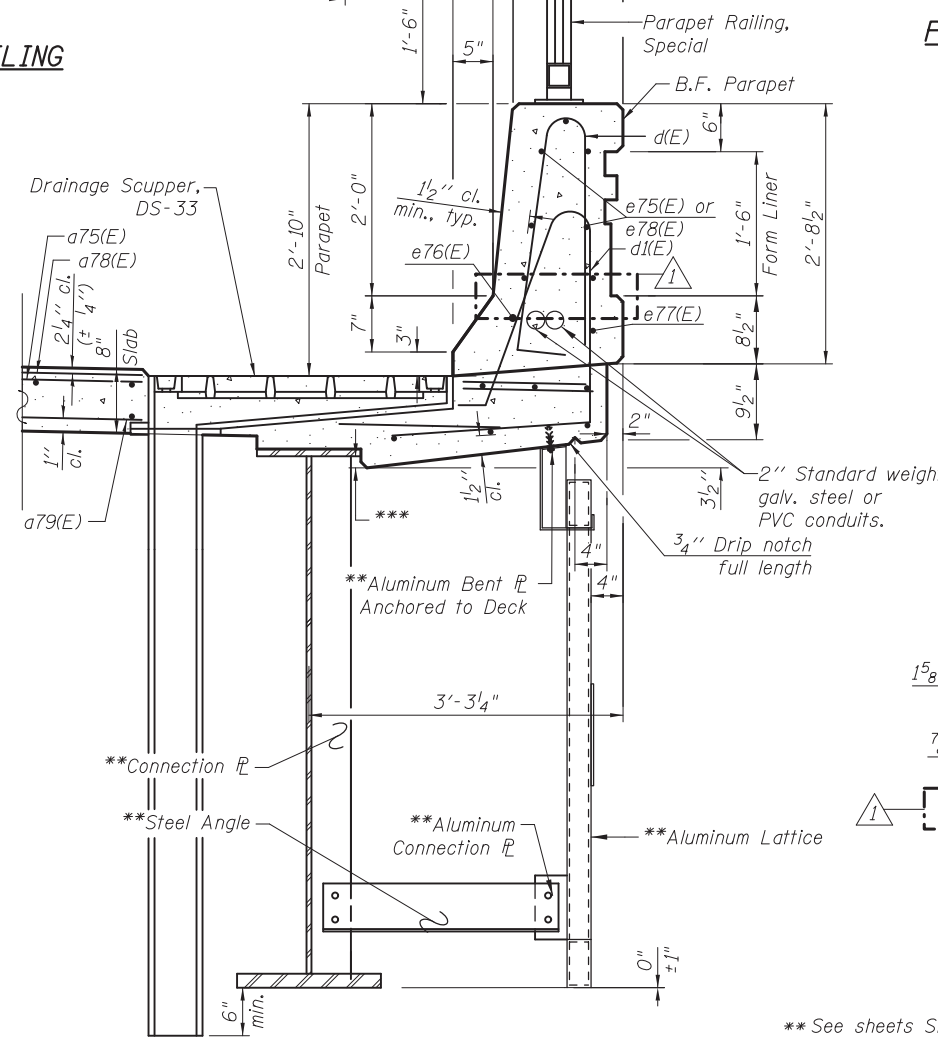


**SECTION A-A**

**MINIMUM BAR LAP**

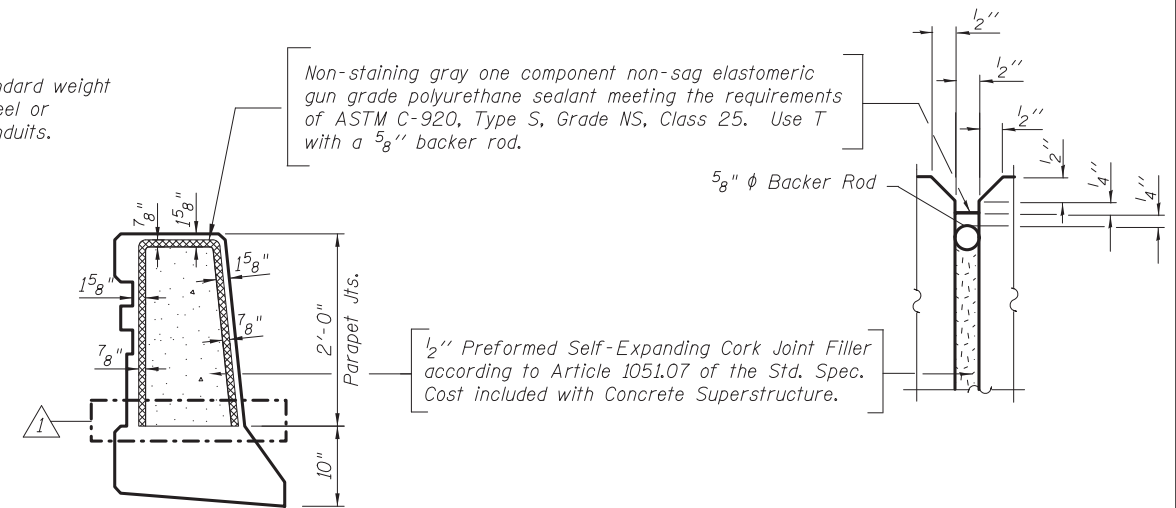
(Parapet)  
#4 bar = 2'-0"  
#8 bar = 5'-2"

Notes:  
See sheet SD11 for Parapet Form Liner details.  
See sheet SD14 for Parapet Railing details.  
See sheet SD16 for Drainage Scupper DS-33 details.  
See sheet SD9 for Section B-B.  
Drains shall be located clear of all diaphragms.



**SECTION THRU PARAPET**

(all edges have a 3/4" chamfer)



**PARAPET JOINT DETAILS**

\*\* See sheets SD10 and SD11 for Ornamental Aluminum Lattice connections and details.  
\*\*\* East overhang: Max. = 1 3/8", Min. = 1/2"  
West overhang: Max. = 2", Min. = 1 1/4"

I:\2154\cad\sheet\Roadway\20-Structures & Walls\05-SN\_056-0080\0560080-60F72-08-SSD\_r.v2.dgn 11/4/2012 5:21/2012

DRAWN	- M. LANGE	REVISED	- 5/3/12 K.L.B.
DESIGNED	- D. ATKINS	REVISED	-
CHECKED	- G. HATLESTAD	REVISED	-
DATE	- 5/3/2012	REVISED	-

O.R. RTE.	SECTION	COUNTY	TOTAL SHEETS	SHEET NO.
0003	18A-2	MCHENRY	825	562
CONTRACT NO. 60F72				
ILLINOIS FED. AID PROJECT				