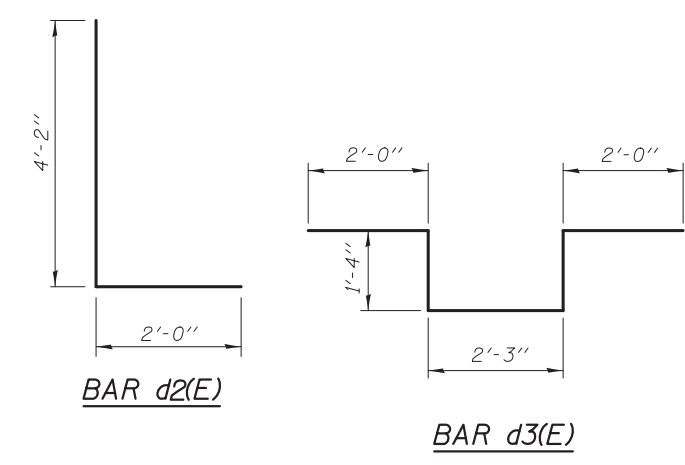
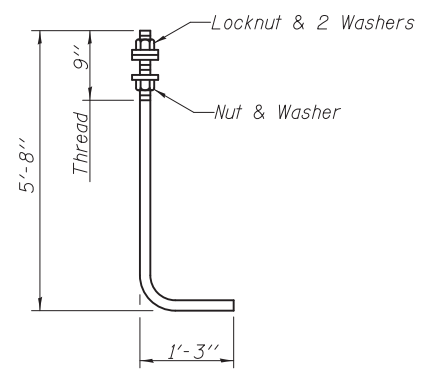
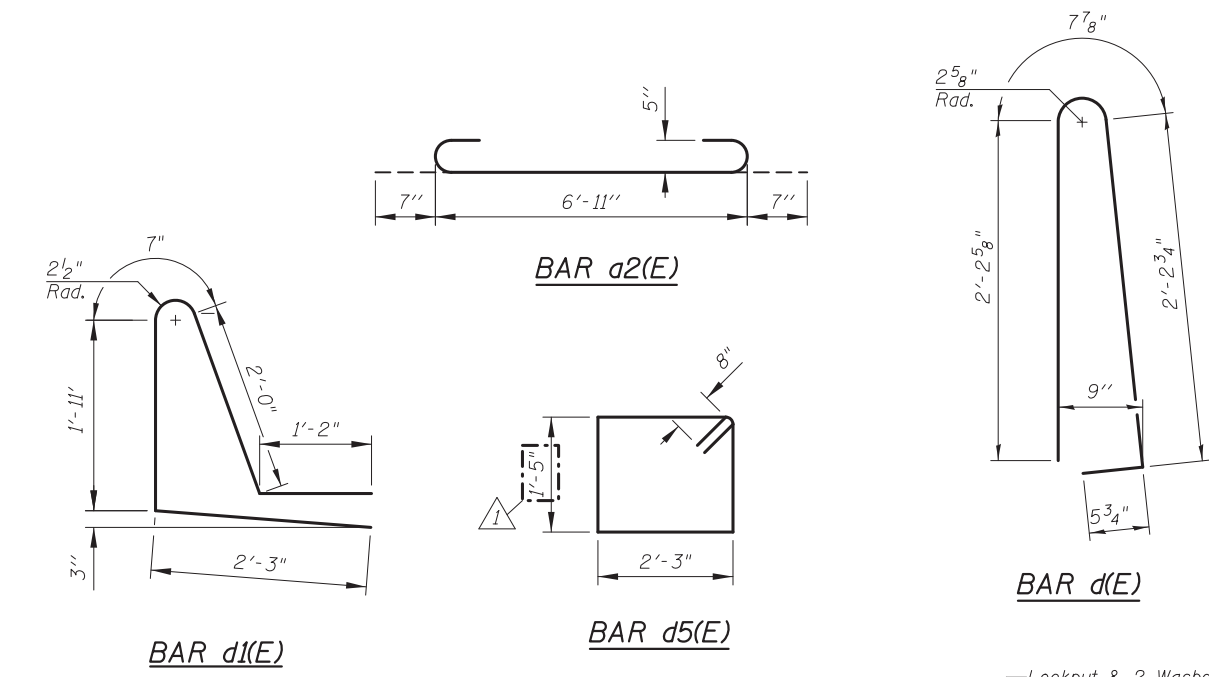
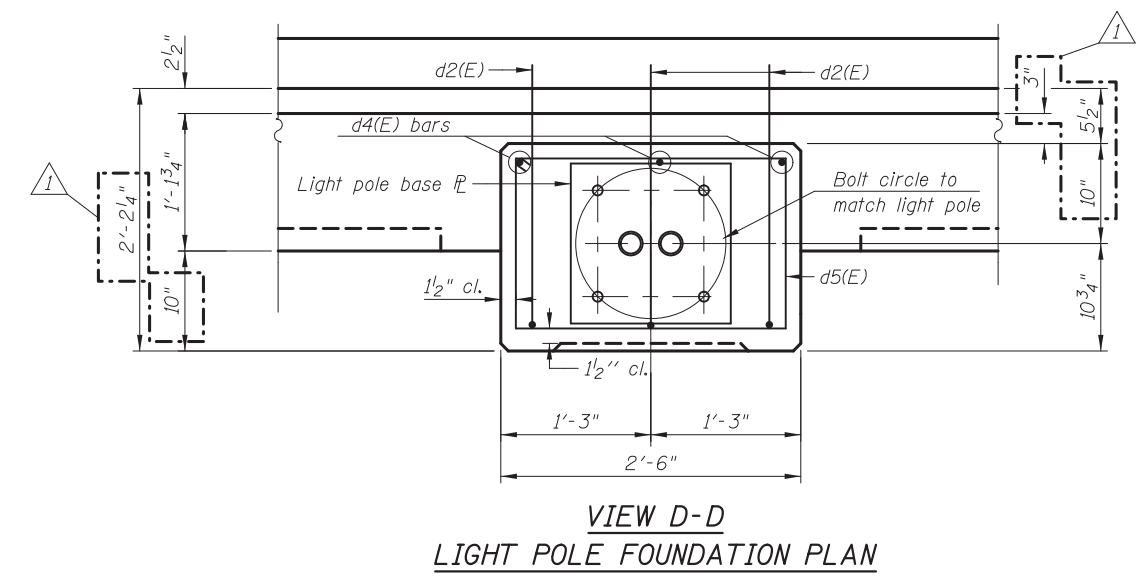
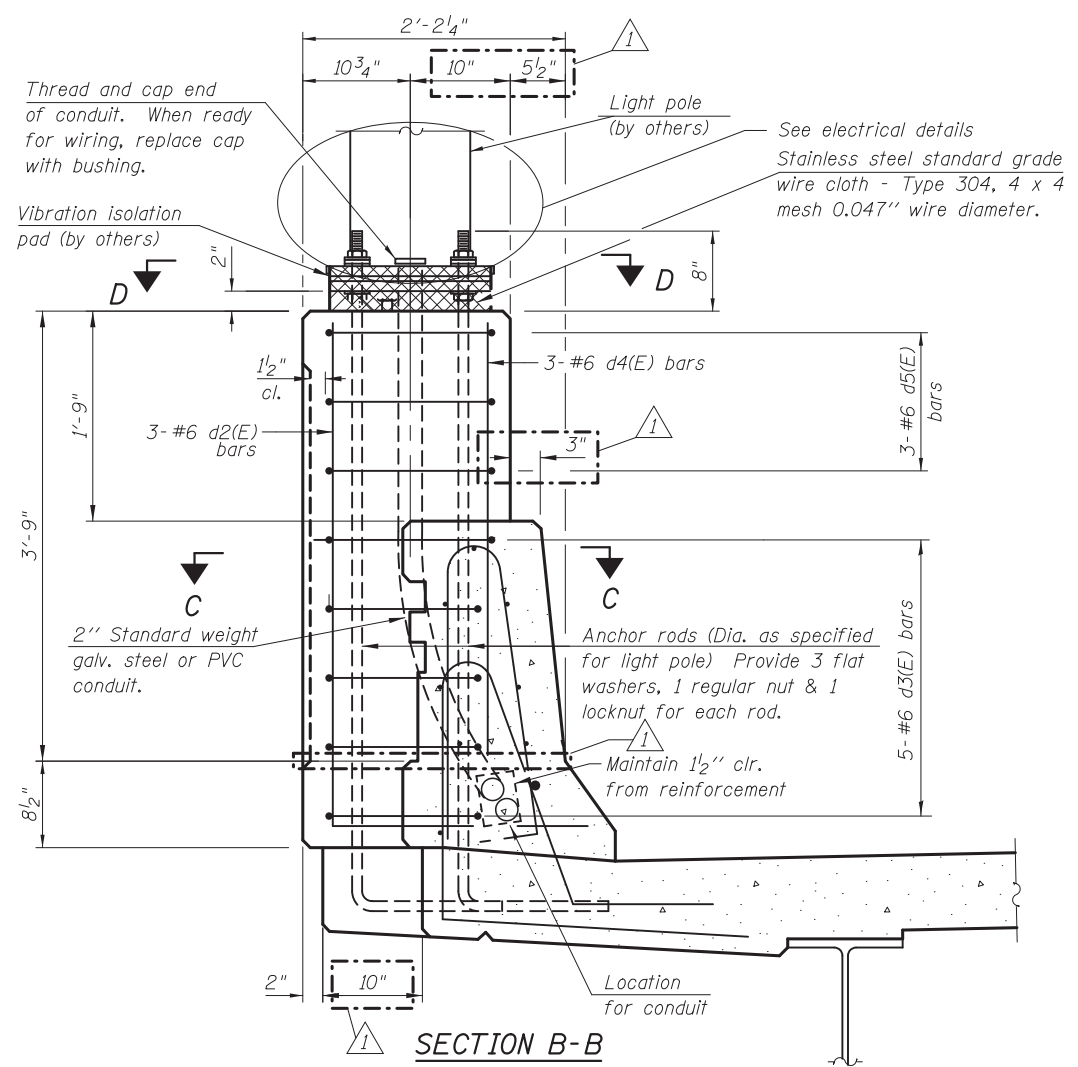


**SUPERSTRUCTURE
BILL OF MATERIAL**

Bar	No.	Size	Length	Shape
a8(E)	8	#5	2'-0"	—
a75(E)	266	#5	32'-10"	—
a76(E)	10	#5	35'-0"	—
a77(E)	24	#5	8'-1"	—
a78(E)	530	#6	6'-6"	—
a79(E)	173	#5	31'-4"	—
b75(E)	180	#5	31'-6"	—
b76(E)	180	#5	26'-10"	—
d(E)	318	#5	5'-7"	—
d1(E)	318	#5	7'-11"	—
d2(E)	9	#6	6'-2"	—
d3(E)	15	#6	8'-11"	—
d4(E)	9	#6	3'-5"	—
d5(E)	9	#6	8'-8"	—
e75(E)	98	#4	15'-8"	—
e76(E)	10	#8	33'-1"	—
e77(E)	12	#4	25'-9"	—
e78(E)	14	#4	32'-8"	—
x(E)	48	#5	6'-5"	—
Item	Unit	Quantity		
Concrete Superstructures	Cu. Yd.	167.7		
Bridge Deck Grooving	Sq. Yd.	483		
Protective Coat	Sq. Yd.	620		
Reinforcement Bars, Epoxy Coated	Pound	39,150		
Form Liner Textured Surface, Special	Sq. Ft.	392		

Bars indicated thus 1 x 3-#8 etc. indicates 1 line of bars with 3 lengths per line.



ANCHOR ROD
Diameter as specified for light poles. (ASTM F 1554 Grade 105)

5/21/2012 11:47:12 AM I:\2154\cad\sheet\Roadway\20-Structures & Walls\05-SN 056-0080\0560080-60F72-09-SSD_r.v2.dgn

Note:
Cost of anchor rods and conduit is included with Concrete Superstructure. See sheet SDB for Section A-A.

CIVILTECH
450 E Devon Ave, Suite 300
Itasca, Illinois 60143
Tel: 630.773.3900 Fax: 630.773.3975
www.civiltechinc.com

DRAWN	- M. LANGE	REVISED	- 5/3/12 K.L.B.
DESIGNED	- D. ATKINS	REVISED	-
CHECKED	- G. HATLESTAD	REVISED	-
DATE	- 5/3/2012	REVISED	-

**STATE OF ILLINOIS
DEPARTMENT OF TRANSPORTATION**

**SUPERSTRUCTURE DETAILS II
SB ENTR. RAMP (RAMP C) OVER CRYSTAL CREEK
STRUCTURE NO. 056-0080**
SHEET NO. SD9 OF SD30 SHEETS

O.R. RTE.	SECTION	COUNTY	TOTAL SHEETS	SHEET NO.
0003	18A-2	MCHENRY	825	563
ILLINOIS FED. AID PROJECT			CONTRACT NO. 60F72	