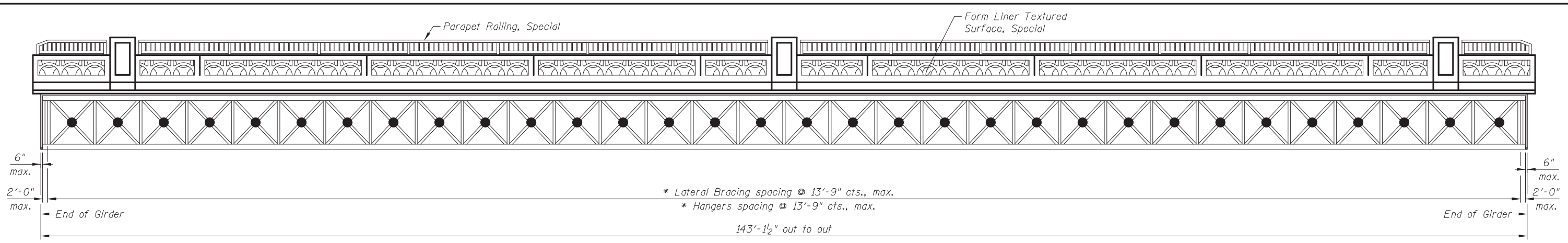


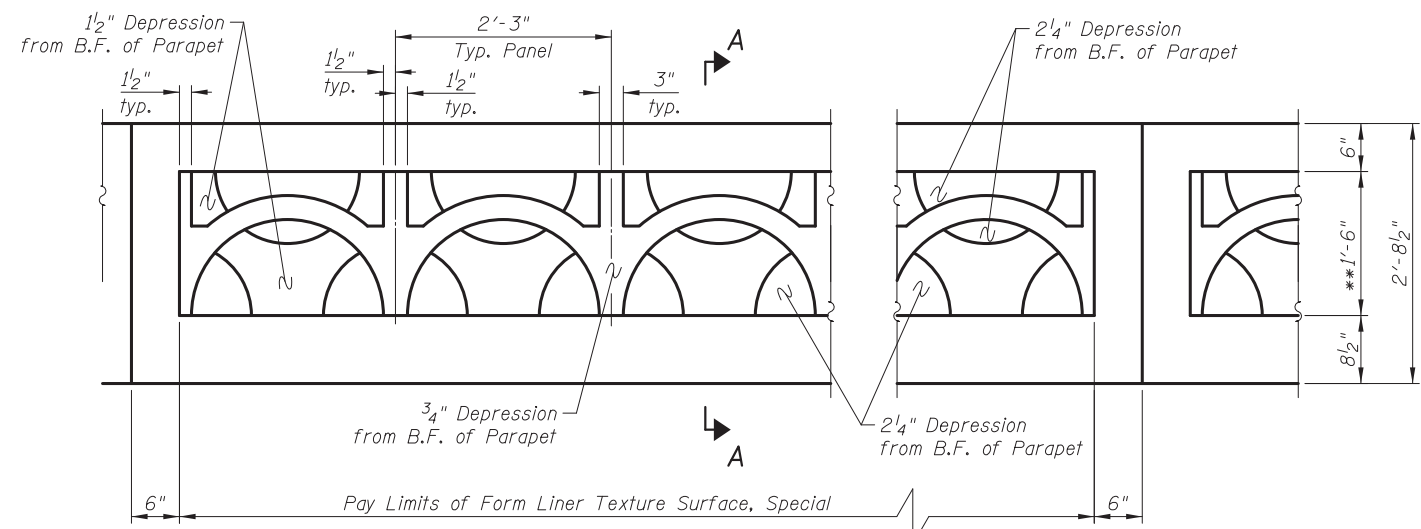
5/21/2012 11:47:48 AM I:\2154\cad\sheet\Roadway\20-Structures & Walls\05-SN 056-0080\0560080-60F72-11-AD\_Rev2.dgn



**ELEVATION - EXTERIOR FASCIA**

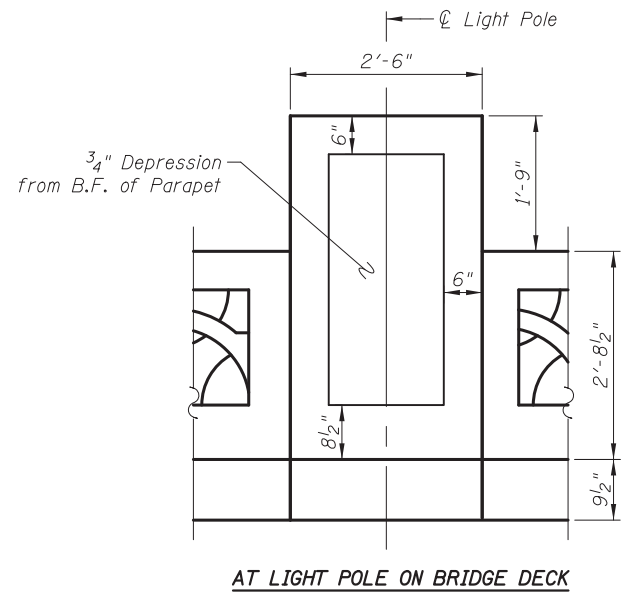
\* Lateral Bracing spacing @ 13'-9" cts., max.  
 \* Hangers spacing @ 13'-9" cts., max.

\* Lateral Bracing connections shall occur at the vertical aluminum tubes and Hangers shall occur in mid span of lattice. Contractor to layout locations and submit shop drawings for approval.

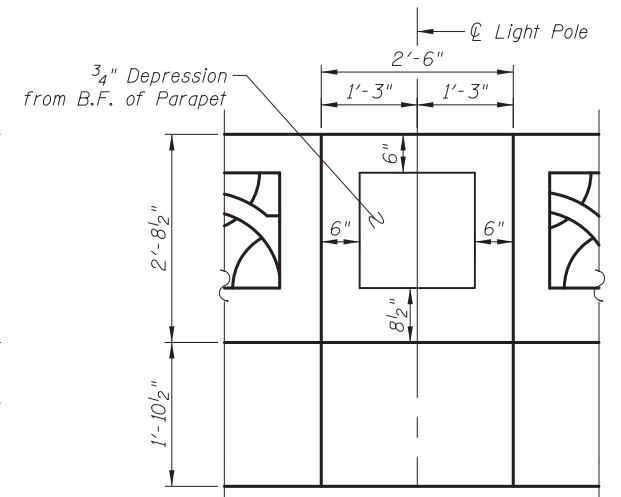


**ELEVATION - OUTSIDE FACE OF PARAPET**

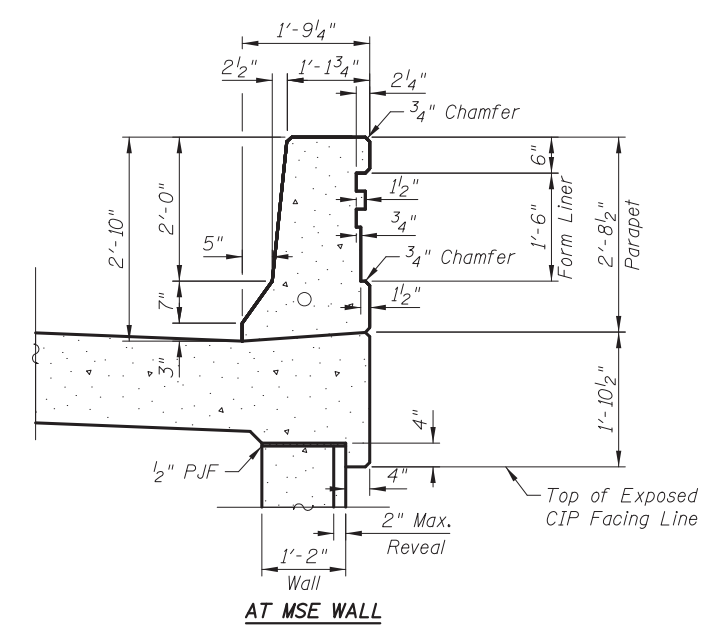
\*\* Pay Limits of Form Liner Texture Surface, Special



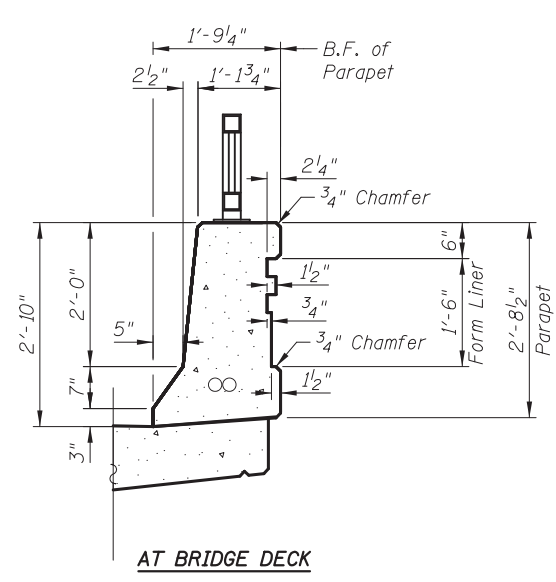
**AT LIGHT POLE ON BRIDGE DECK**



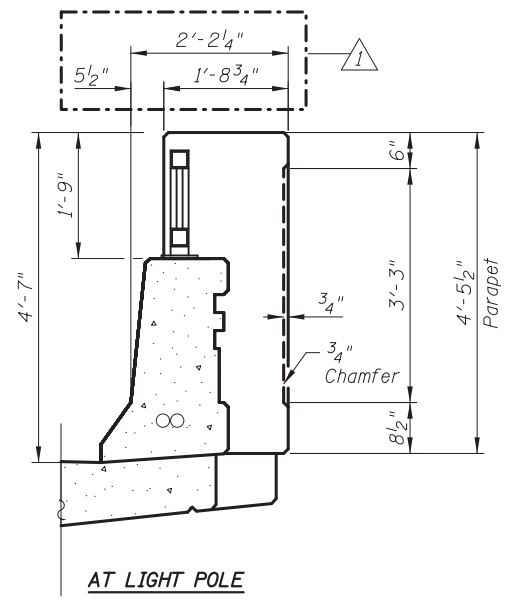
**AT LIGHT POLE ON ANCHORAGE SLAB**



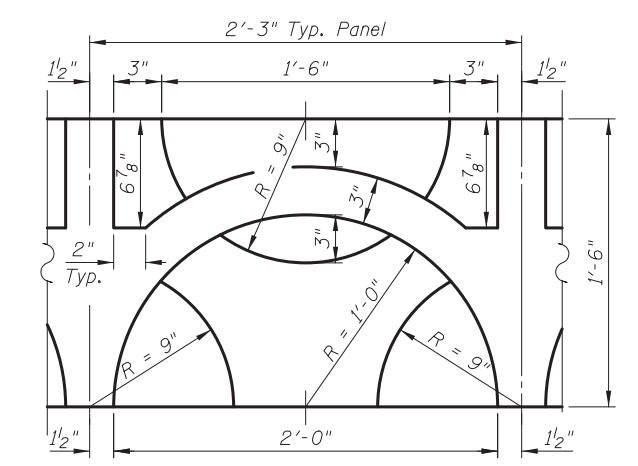
**AT MSE WALL**



**AT BRIDGE DECK**



**AT LIGHT POLE**



**FORM LINER TEXTURE SURFACE, SPECIAL DETAIL**

Notes:  
 Parapet, railing, lighting and all other details not specifically pertaining to the lattice are shown for graphics purposes only.  
 See Sheet SD10 for Hanger and Lateral Bracing Details.

**SECTION A-A**

**CIVILTECH**  
 450 E Devon Ave, Suite 300  
 Itasca, Illinois 60143  
 Tel: 630.773.3900 Fax: 630.773.3975  
 www.civiltechinc.com

DRAWN	- M. LANGE	REVISED	- 5/3/12 K.L.B.
DESIGNED	- D. ATKINS	REVISED	-
CHECKED	- G. HATLESTAD	REVISED	-
DATE	- 5/3/2012	REVISED	-

**STATE OF ILLINOIS**  
**DEPARTMENT OF TRANSPORTATION**

**ARCHITECTURAL DETAILS**  
**SB ENTR. RAMP (RAMP C) OVER CRYSTAL CREEK**  
**STRUCTURE NO. 056-0080**  
 SHEET NO. SD11 OF SD30 SHEETS

O.R. RTE.	SECTION	COUNTY	TOTAL SHEETS	SHEET NO.
0003	18A-2	MCHENRY	825	565
CONTRACT NO. 60F72				
ILLINOIS FED. AID PROJECT				