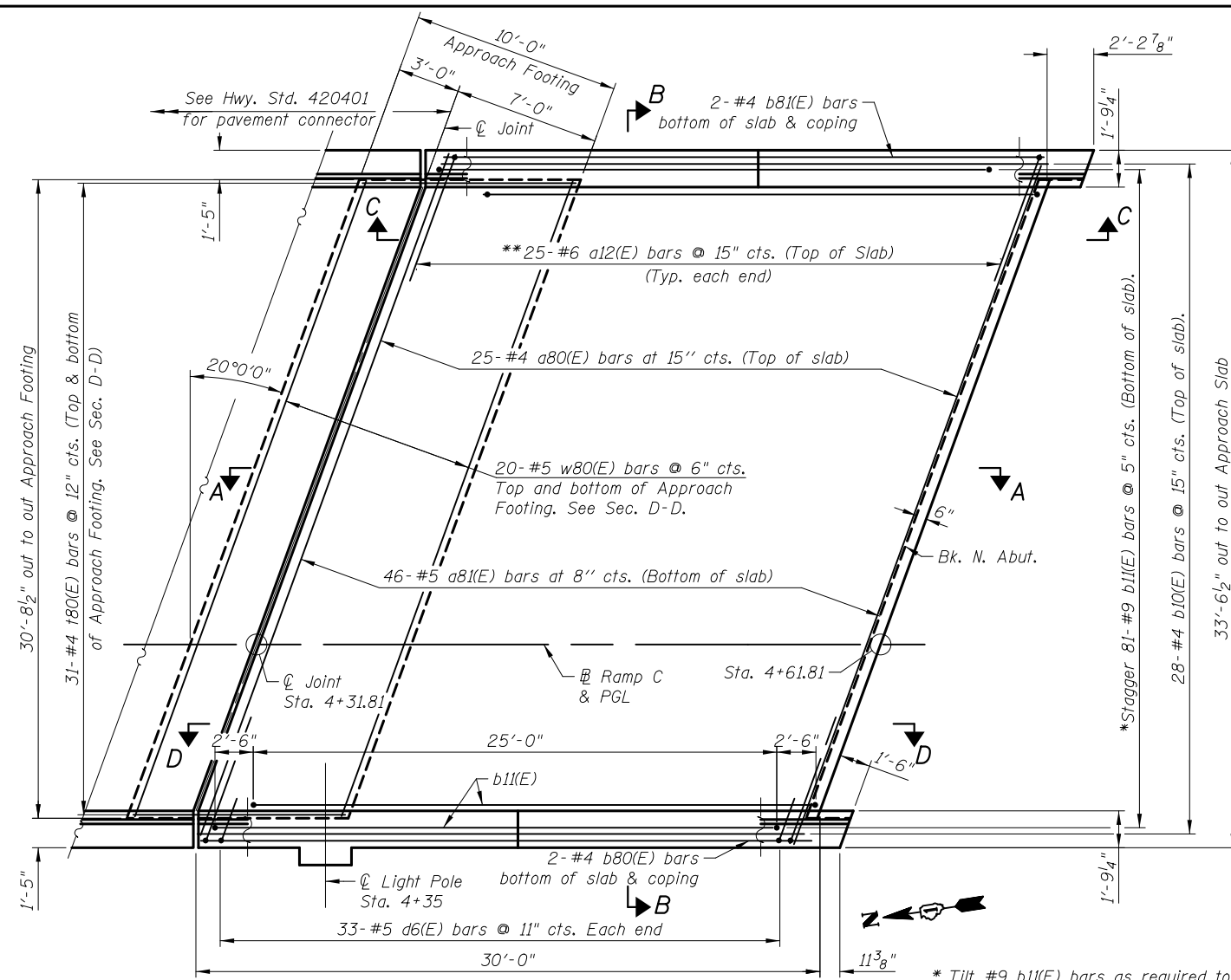
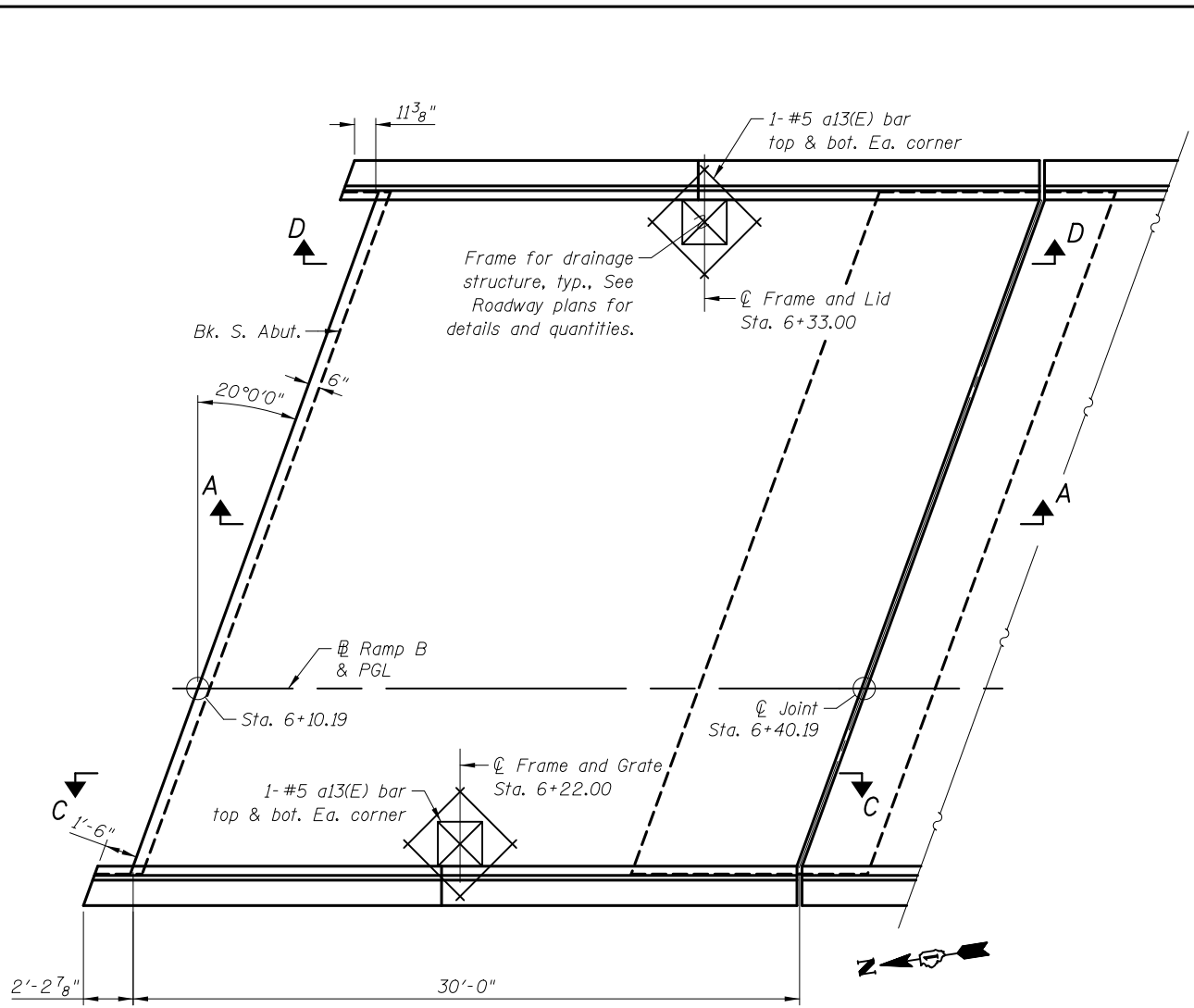


4/21/30 PM 4:21:30 PM J:\2154\cad\sheet\Roadway\20-Structures & Walls\05-SN 056-0080\0560080-60F72-12-APS-REV.dgn



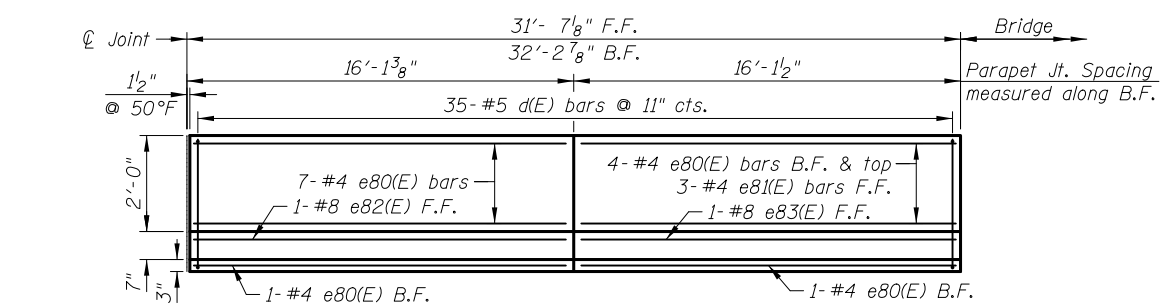
PLAN - NORTH APPROACH



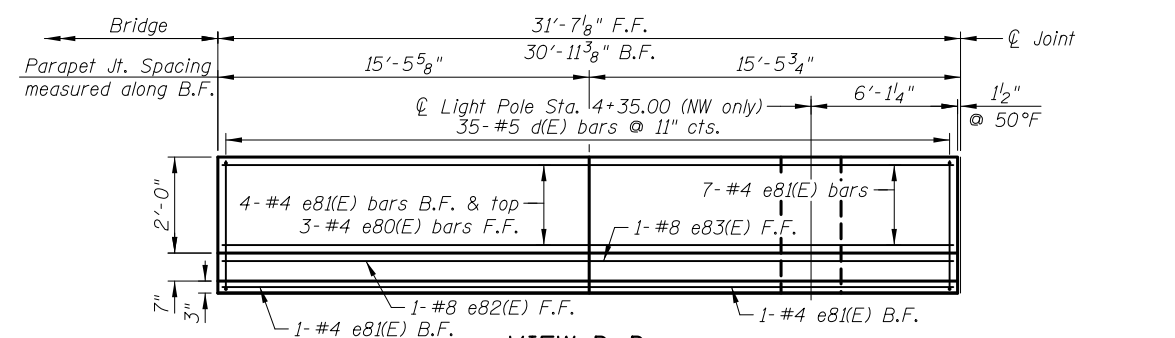
PLAN - SOUTH APPROACH

(See North Approach for remainder of dimensions and reinforcement)

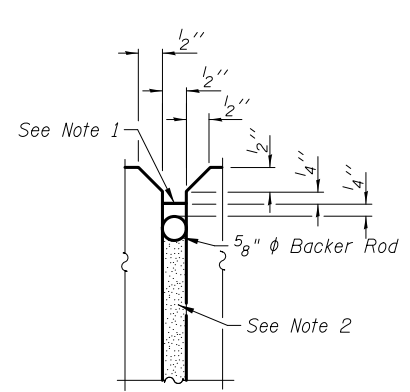
* Tilt #9 b11(E) bars as required to maintain clearance.
 ** Space between a80(E) bars, typ. each parapet



VIEW C-C

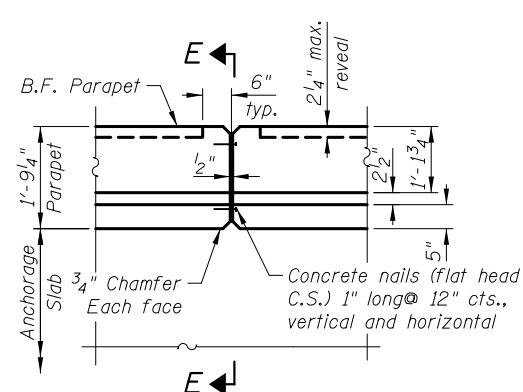


VIEW D-D

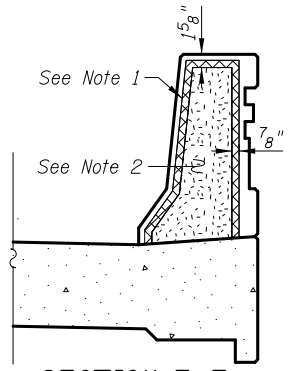


PARAPET JOINT DETAILS

- Parapet Joint Notes:
1. Non-staining gray one component non-sag elastomeric gun grade polyurethane sealant meeting the requirements of ASTM C-920, Type S, Grade NS, Class 25, use T with a 5/8" backer rod.
 2. 1/2" Preformed Self-Expanding Cork Joint Filler according to Article 1051.07 of the Std. Spec. Cost included with Concrete Superstructure.



SECTION E-E



SECTION E-E

Notes:
 See sheet SD13 for Detail G, Section A-A and B-B and for Light Pole Foundation Plan.
 a80(E) and a81(E) measured along Ramp C.

Hatched area to be poured after superstructure false work has been removed. See sheets SD20 & SD21 for more information.

CIVILTECH
 450 E Devon Ave, Suite 300
 Itasca, Illinois 60143
 Tel: 630.773.3900 Fax: 630.773.3975
 www.civiltechinc.com

DRAWN	- M. LANGE	REVISED	-
DESIGNED	- D. ATKINS	REVISED	-
CHECKED	- G. HATLESTAD	REVISED	-
DATE	- 5/3/2012	REVISED	-

**STATE OF ILLINOIS
 DEPARTMENT OF TRANSPORTATION**

**APPROACH SLABS
 SB ENTR. RAMP (RAMP C) OVER CRYSTAL CREEK
 STRUCTURE NO. 056-0080**

O.R. RTE.	SECTION	COUNTY	TOTAL SHEETS	SHEET NO.
0003	18A-2	MCHENRY	825	566
CONTRACT NO. 60F72				

SHEET NO. SD12 OF SD30 SHEETS

ILLINOIS FED. AID PROJECT