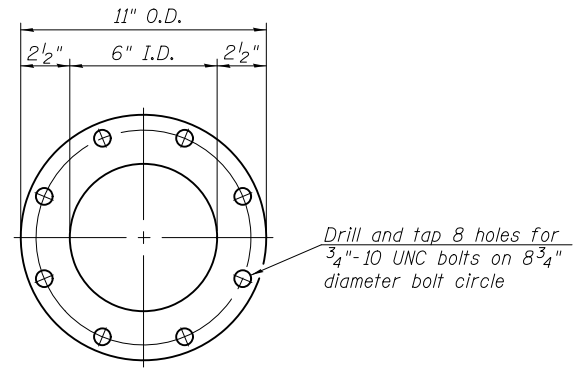
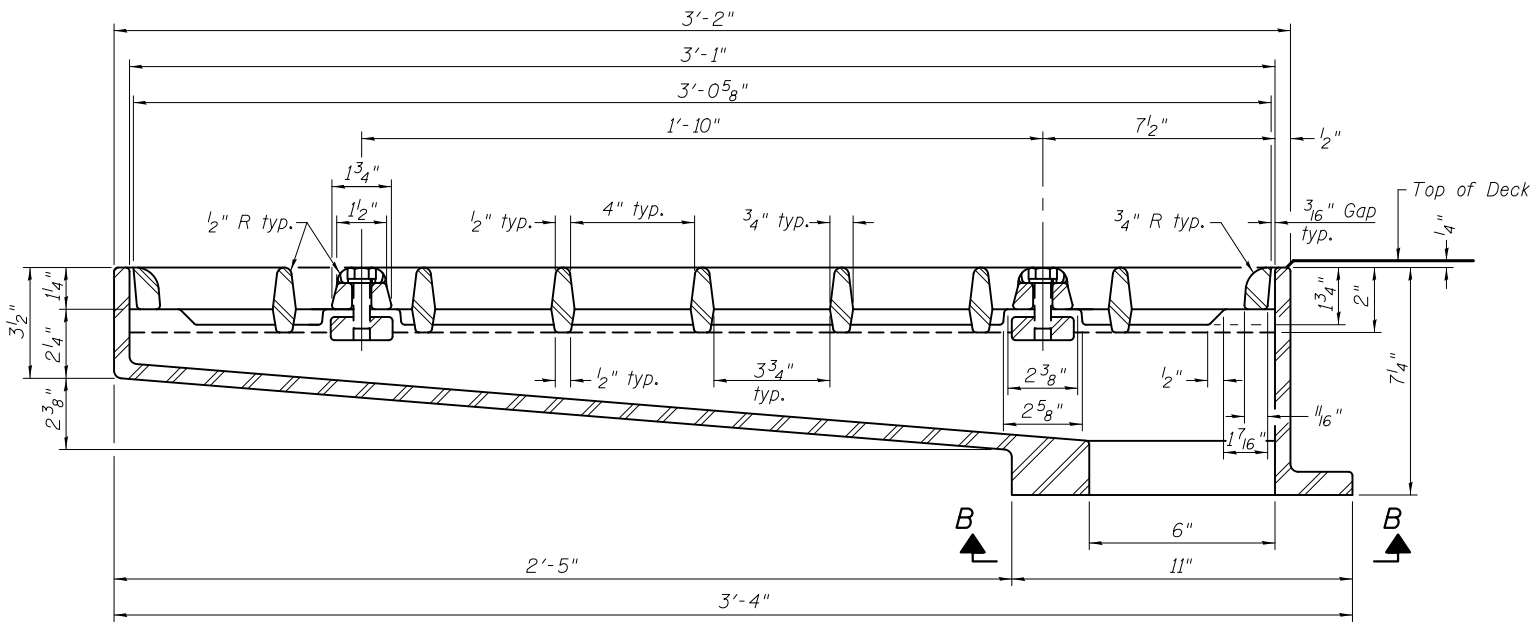


PLAN



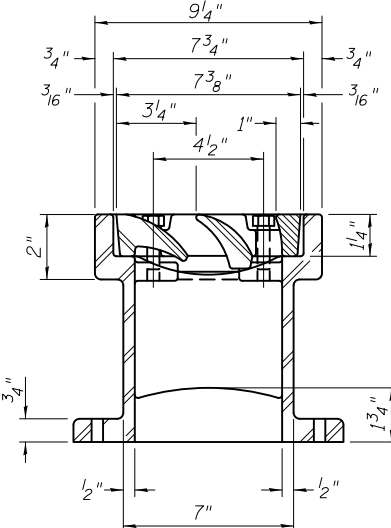
VIEW B-B

Drill and tap 8 holes for 3/4"-10 UNC bolts on 8 3/4" diameter bolt circle

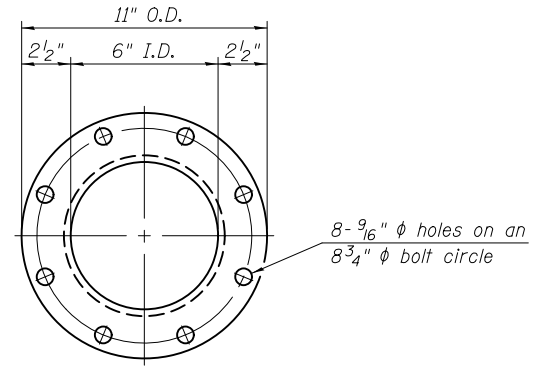


SECTION A-A

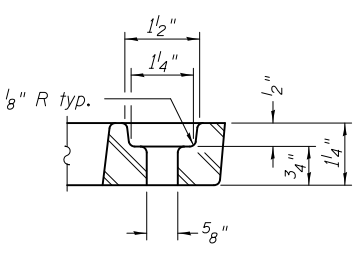
See sheet SDB for scupper location relative to parapet.



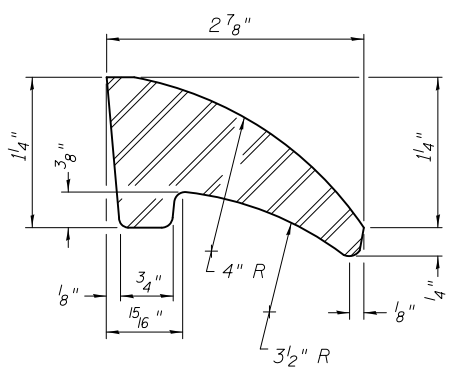
SECTION C-C



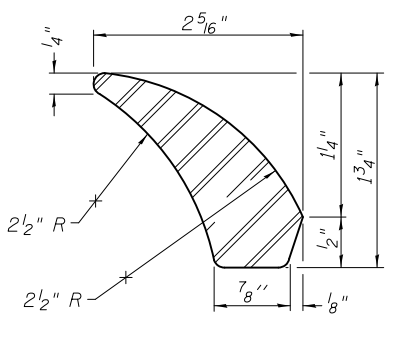
DOWNSPOUT



BOLT HOLE DETAIL



FIRST VANE DETAIL



SECOND VANE DETAIL

BILL OF MATERIAL

ITEM	UNIT	QUANTITY
Drainage Scupper, DS-33	Each	1

DS-33 7-1-10

CIVILTECH
 450 E Devon Ave, Suite 300
 Itasca, Illinois 60143
 Tel: 630.773.3900 Fax: 630.773.3975
 www.civiltechinc.com

DRAWN - M. LANGE	REVISED -
DESIGNED - D. ATKINS	REVISED -
CHECKED - G. HATLESTAD	REVISED -
DATE - 5/3/2012	REVISED -

STATE OF ILLINOIS
 DEPARTMENT OF TRANSPORTATION

DRAINAGE SCUPPER, DS-33
SB ENTR. RAMP (RAMP C) OVER CRYSTAL CREEK
STRUCTURE NO. 056-0080

O.R. RTE.	SECTION	COUNTY	TOTAL SHEETS	SHEET NO.
0003	18A-2	MCHENRY	825	570
CONTRACT NO. 60F72				

SHEET NO. SD16 OF SD30 SHEETS

ILLINOIS FED. AID PROJECT

5/2/2012 4:28:33 PM I:\2164\cad\sheet\Roadway\20-Structures & Walls\05-SN_056-0080\0560080-60F72-16-DS33.dgn