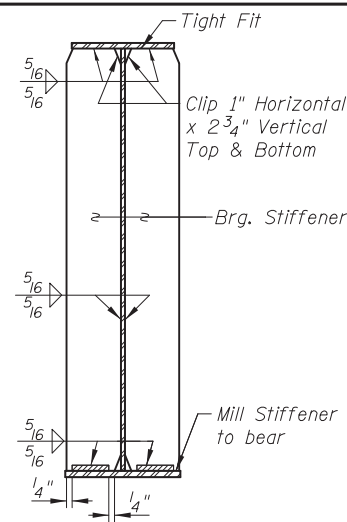


CAMBER DIAGRAM

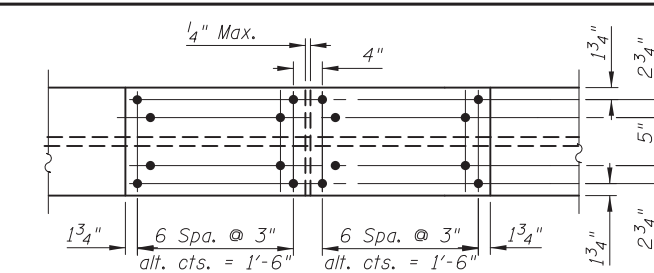
TOP OF WEB ELEVATIONS

(For Fabrication Only)

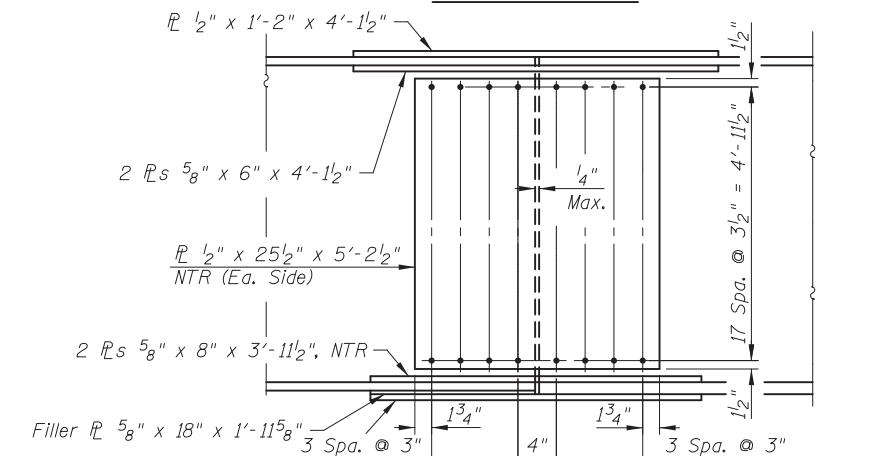
GIRDER	℄ Brg. N. Abut.	℄ Field Splice	℄ Brg. S. Abut.
1	758.29	760.38	763.53
2	758.08	760.18	763.35
3	757.88	759.97	763.17
4	757.67	759.77	762.99
5	757.44	759.53	762.78



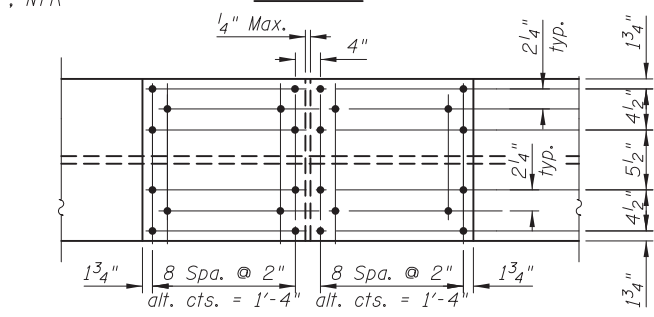
SECTION AT ABUTMENT



TOP FLANGE - PLAN

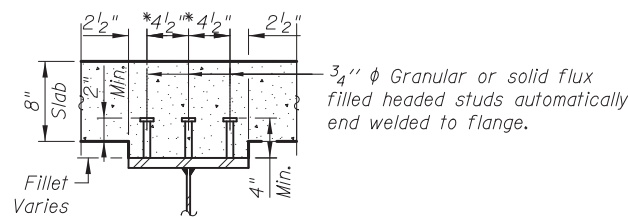


ELEVATION



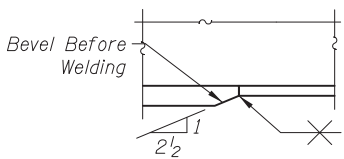
BOTTOM FLANGE

FIELD SPLICE DETAIL

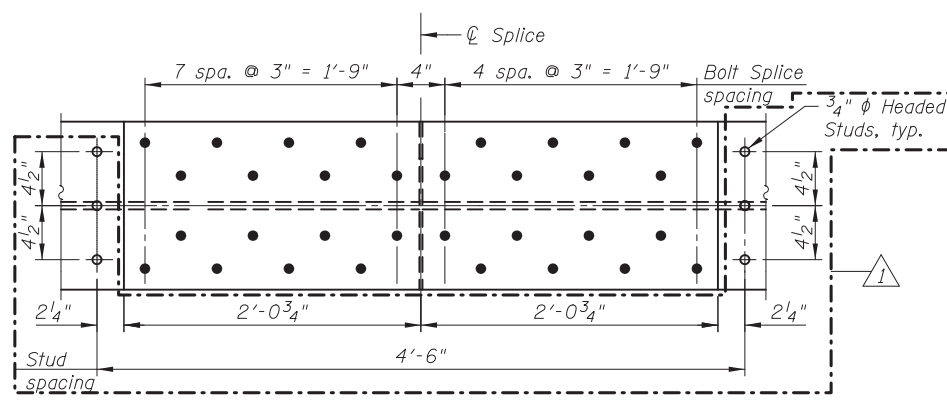


SECTION A-A

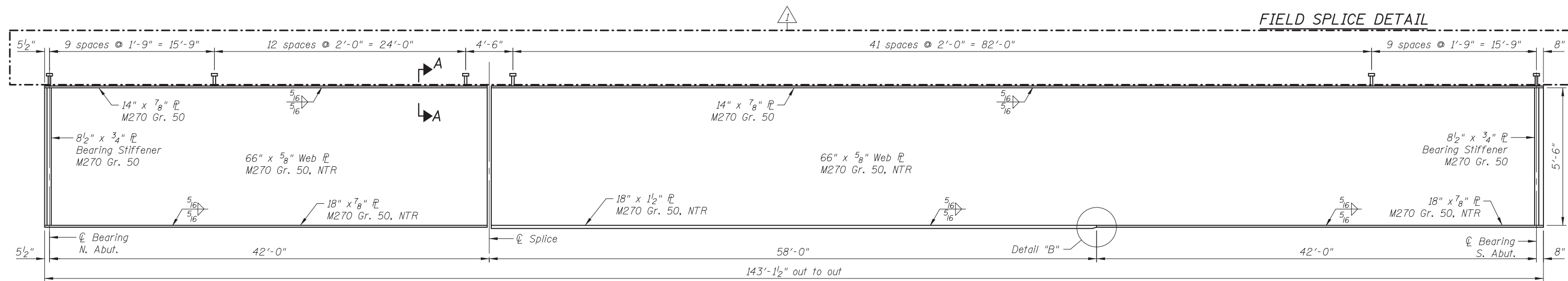
* See Studs at Splice Plate Detail for spacing



DETAIL "B"



STUDS AT SPLICE PLATE



GIRDER ELEVATION

Notes:
 Load carrying components designated "NTR" shall conform to the Impact Testing Requirements, Zone 2.
 HS Bolts shall be 7/8" φ AASHTO M164/ASTM A325, with 15/16" φ holes.
 All splices are symmetrical about ℄ splice except for fills.
 Refer to sheets SD10 and SD11 for the Ornamental Aluminum Lattice for the East Fascia of Beam 1 and the West Fascia of Beam 5.
 Splice plates shall be AASHTO M270 Gr 50.

TOTAL BILL OF MATERIAL

ITEM	UNIT	TOTAL
Furnishing and Erecting Structural Steel	L. Sum	0.17
Stud Shear Connectors	Each	1,095

5/23/2012 10:48:46 AM I:\2154\cad\sheet\Roadway\20-Structures & Walls\05-SN_056-0080\0560080-60F72-18-PCD_rev2.dgn
CIVILTECH
 450 E Devon Ave, Suite 300
 Itasca, Illinois 60143
 Tel: 630.773.3900 Fax: 630.773.3975
 www.civiltechinc.com

DRAWN - M. LANGE	REVISED - 5/23/2012 D.L.A.
DESIGNED - D. ATKINS	REVISED -
CHECKED - G. HATLESTAD	REVISED -
DATE - 5/3/2012	REVISED -

STATE OF ILLINOIS
DEPARTMENT OF TRANSPORTATION

PLATE GIRDER DETAILS
SB ENTR. RAMP (RAMP C) OVER CRYSTAL CREEK
STRUCTURE NO. 056-0080
 SHEET NO. SD18 OF SD30 SHEETS

O.R. RTE.	SECTION	COUNTY	TOTAL SHEETS	SHEET NO.
0003	18A-2	MCHENRY	825	572

CONTRACT NO. 60F72
 ILLINOIS FED. AID PROJECT