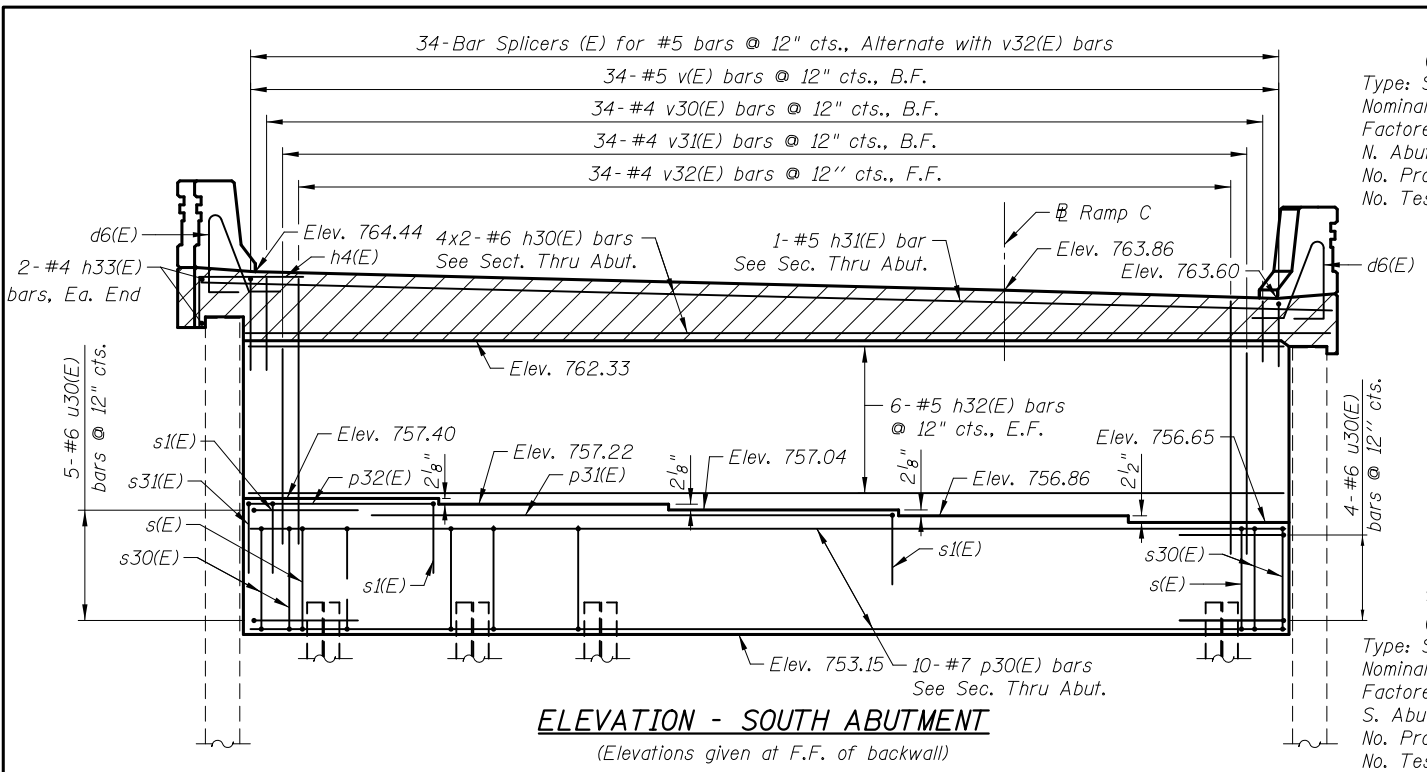
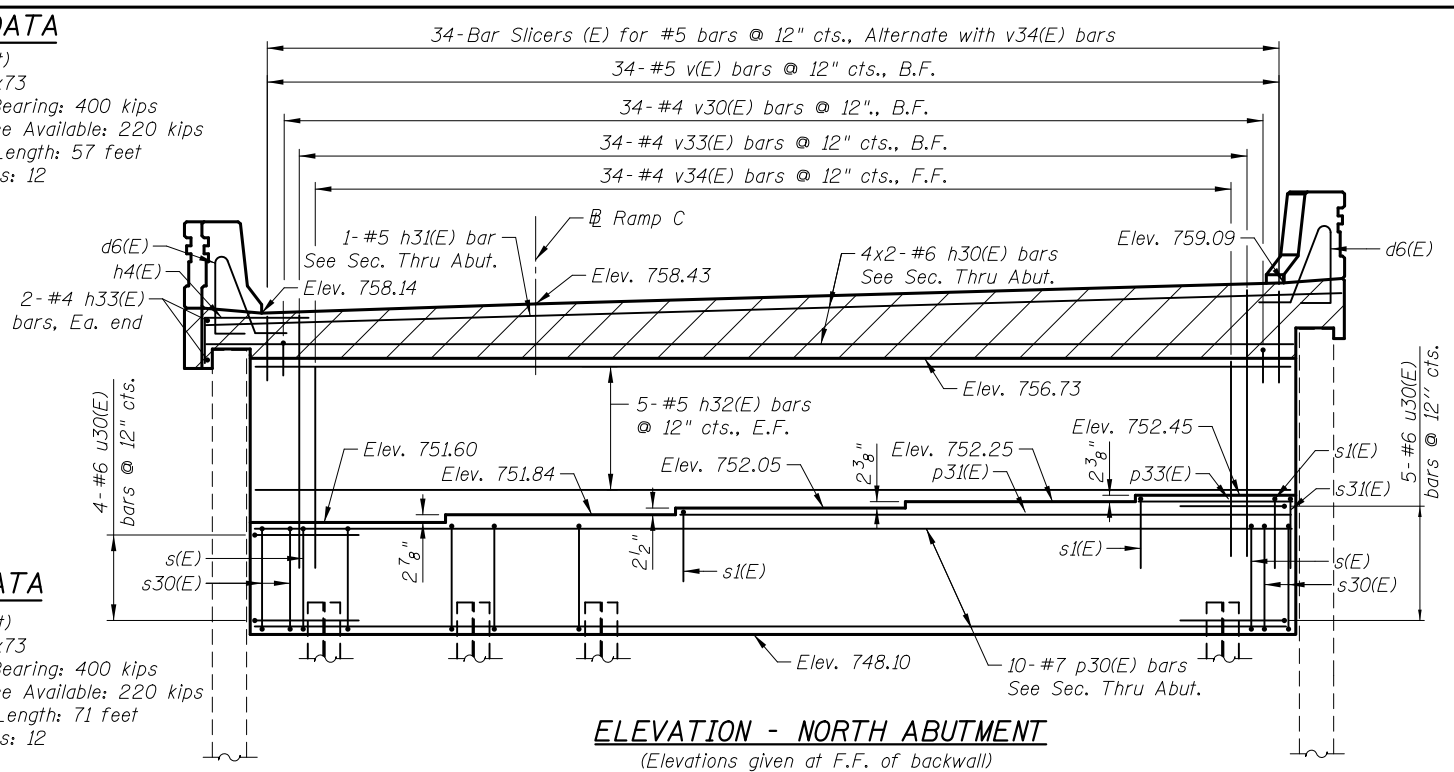


5/2/2012 4:21:36 PM I:\2154\cad\sheet\Roadway\20-Structures & Walls\05-SN_056-0080\0560080-60F72-20-AB.dgn



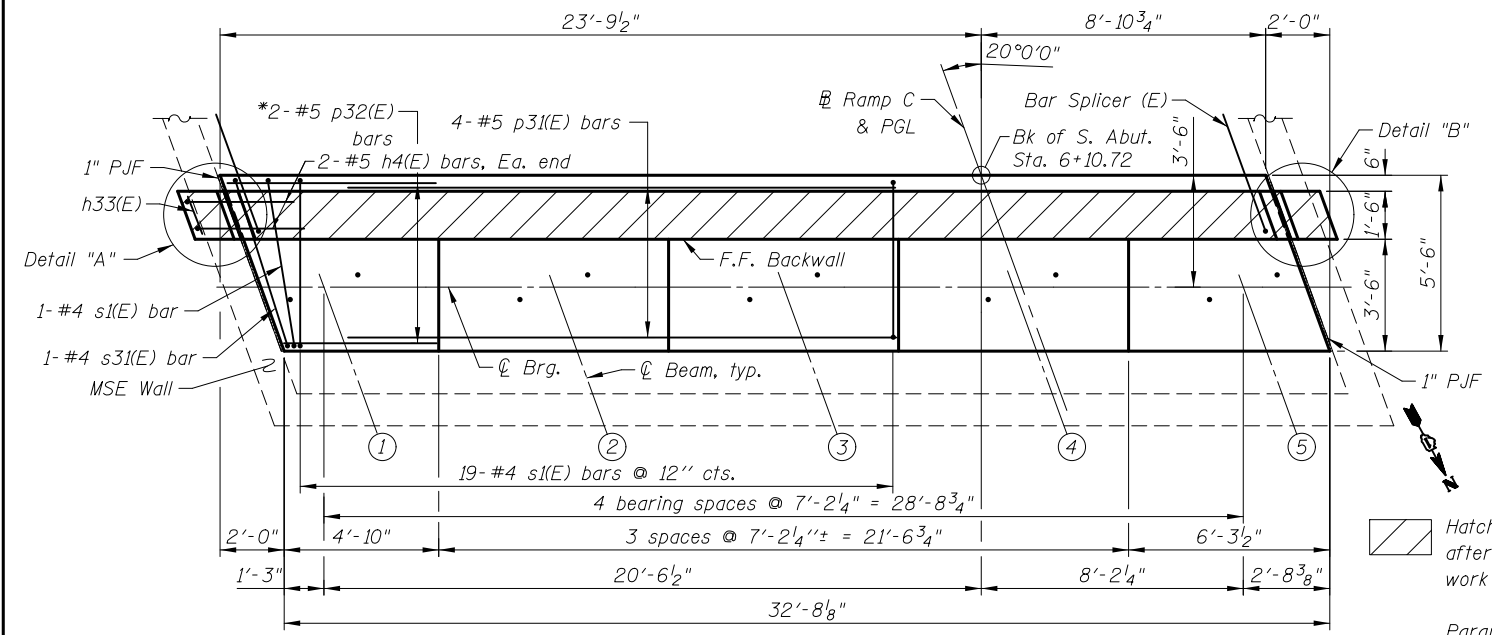
ELEVATION - SOUTH ABUTMENT
(Elevations given at F.F. of backwall)

PILE DATA
(N. Abutment)
Type: Steel HP 14x73
Nominal Required Bearing: 400 kips
Factored Resistance Available: 220 kips
N. Abutment Est. Length: 57 feet
No. Production Piles: 12
No. Test Piles: 1

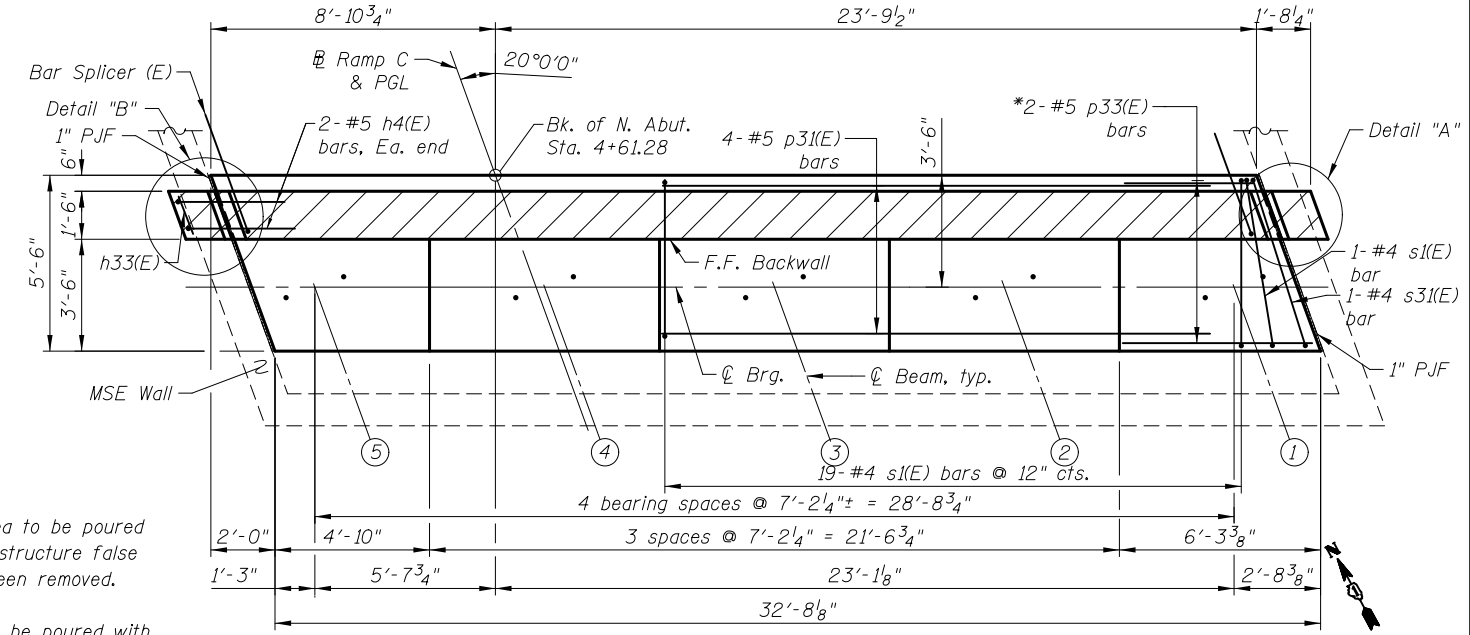


ELEVATION - NORTH ABUTMENT
(Elevations given at F.F. of backwall)

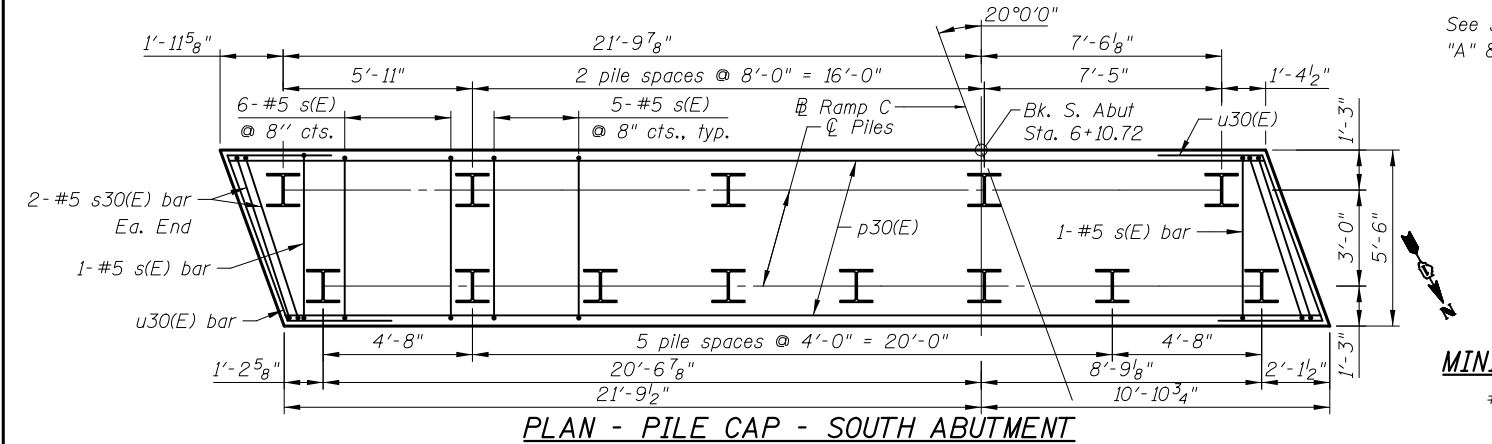
PILE DATA
(S. Abutment)
Type: Steel HP 14x73
Nominal Required Bearing: 400 kips
Factored Resistance Available: 220 kips
S. Abutment Est. Length: 71 feet
No. Production Piles: 12
No. Test Piles: 1



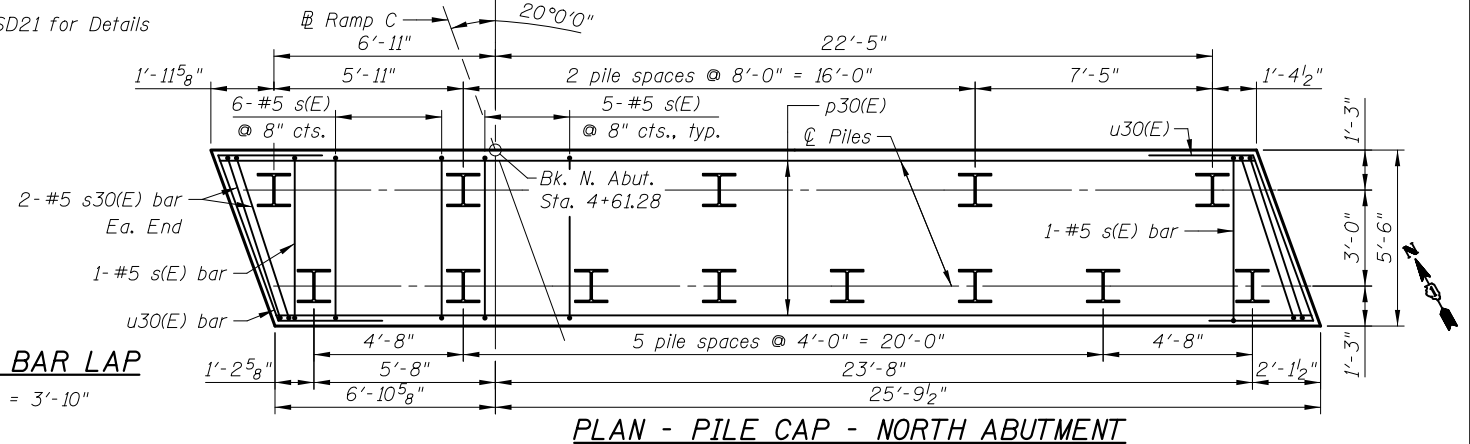
TOP VIEW - SOUTH ABUTMENT



TOP VIEW - NORTH ABUTMENT



PLAN - PILE CAP - SOUTH ABUTMENT



PLAN - PILE CAP - NORTH ABUTMENT

Hatched area to be poured after superstructure false work has been removed.
 Parapets to be poured with Approach Slabs.
 See sheet SD21 for Details "A" & "B".

MINIMUM BAR LAP
#6 bar = 3'-10"

CIVILTECH
450 E Devon Ave, Suite 300
Itasca, Illinois 60143
Tel: 630.773.3900 Fax: 630.773.3975
www.civiltechinc.com

DRAWN	- M. LANGE	REVISED	-
DESIGNED	- D. ATKINS	REVISED	-
CHECKED	- G. HATLESTAD	REVISED	-
DATE	- 5/3/2012	REVISED	-

STATE OF ILLINOIS
DEPARTMENT OF TRANSPORTATION

ABUTMENTS
SB ENTR. RAMP (RAMP C) OVER CRYSTAL CREEK
STRUCTURE NO. 056-0080
SHEET NO. SD20 OF SD30 SHEETS

O.R. RTE.	SECTION	COUNTY	TOTAL SHEETS	SHEET NO.
0003	18A-2	MCHENRY	825	574
CONTRACT NO. 60F72			ILLINOIS FED. AID PROJECT	