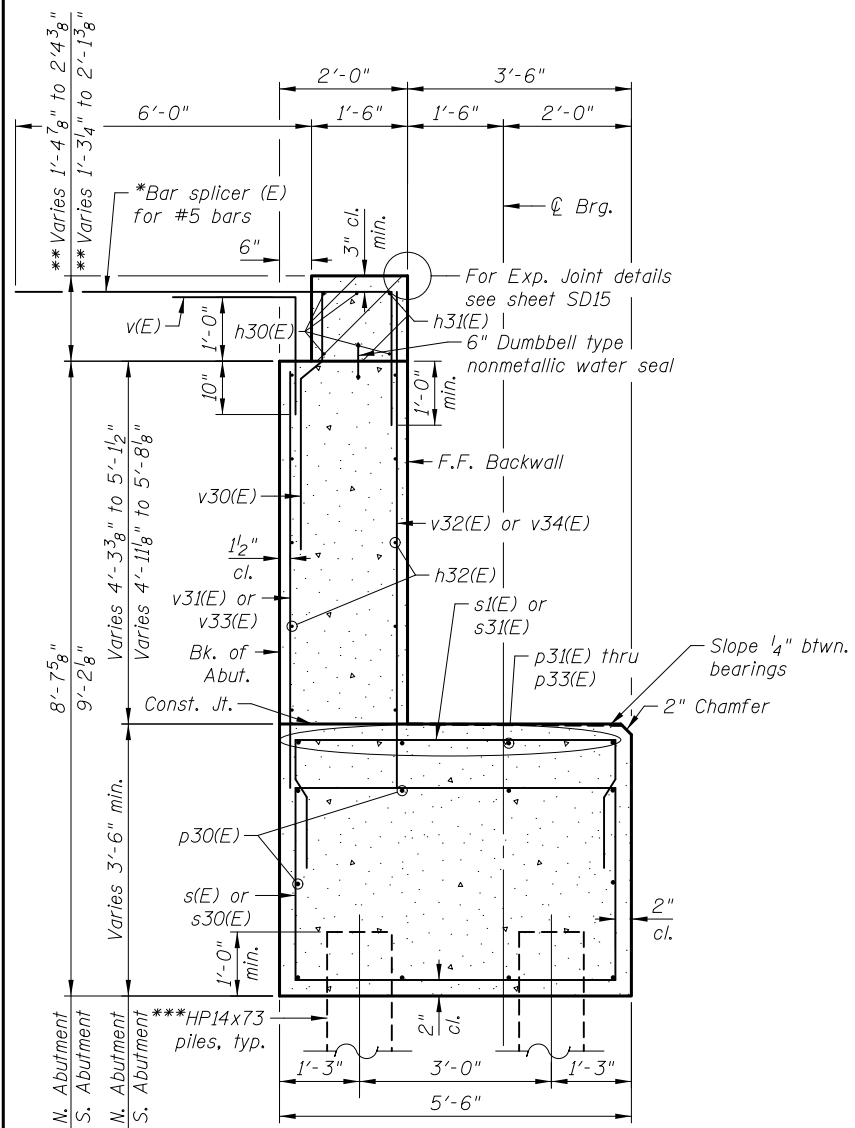
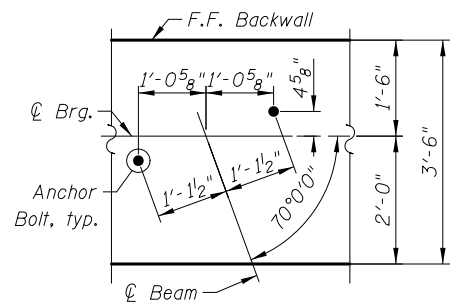


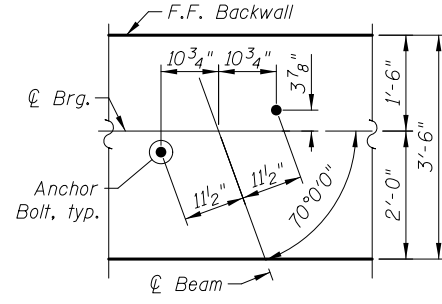
5/2/2012 4:21:36 PM I:\2154\cad\sheet\Roadway\20-Structures & Walls\05-SN 056-0080\0560080-60F72-21-ABD.dgn



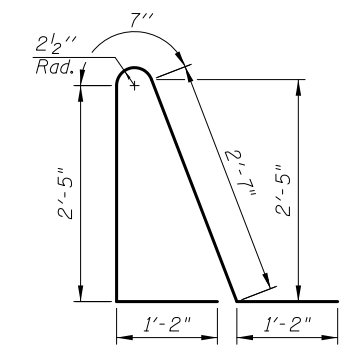
**SECTION THRU ABUTMENT**



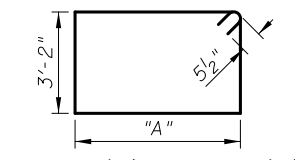
**ANCHOR BOLT DIAGRAM SOUTH ABUTMENT**



**ANCHOR BOLT DIAGRAM NORTH ABUTMENT**

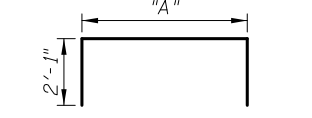


**BAR d6(E)**



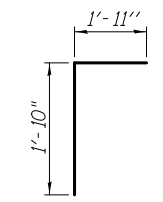
**BAR s(E) and s30(E)**

Dimensions	
Bar	A
s(E)	5'-2"
s30(E)	5'-6"

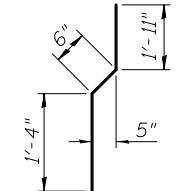


**BAR s1(E) and s31(E)**

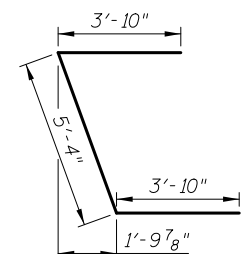
Dimensions	
Bar	A
s1(E)	5'-2"
s31(E)	5'-6"



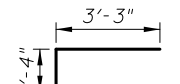
**BAR v(E)**



**BAR v30(E)**



**BAR u30(E)**



**BAR h4(E)**

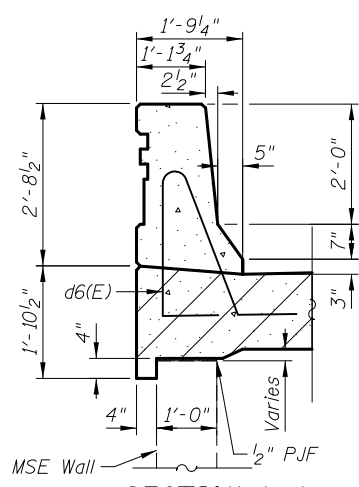
**ABUTMENTS  
BILL OF MATERIAL**  
(For 2 Abutments)

Bar	No.	Size	Length	Shape
d6(E)	8	#5	7'-11"	
h4(E)	8	#5	4'-7"	
h30(E)	16	#6	19'-7"	
h31(E)	2	#5	35'-4"	
h32(E)	22	#5	32'-4"	
h33(E)	8	#4	1'-4"	
p30(E)	20	#7	32'-4"	
p31(E)	8	#5	17'-0"	
p32(E)	2	#5	11'-0"	
p33(E)	2	#5	9'-10"	
s(E)	78	#5	17'-7"	
s1(E)	40	#4	9'-4"	
s30(E)	8	#5	18'-3"	
s31(E)	2	#4	9'-8"	
u30(E)	18	#6	13'-0"	
v(E)	68	#5	3'-9"	
v30(E)	68	#4	3'-11"	
v31(E)	34	#4	6'-8"	
v32(E)	34	#4	8'-1"	
v33(E)	34	#4	6'-3"	
v34(E)	34	#4	7'-7"	
ITEM	UNIT	QUANTITY		
Concrete Structures	Cu. Yd.	75.3		
Concrete Superstructures	Cu. Yd.	7.2		
Bridge Deck Grooving	Sq. Yd.	11		
Protective Coat	Sq. Yd.	11		
Reinforcement Bars, Epoxy Coated	Pound	6,200		
Furnishing Steel Piles, HP14X73	Foot	1,536		
Driving Piles	Foot	1,536		
Test Pile Steel HP14x73	Each	2		
Pile Shoes	Each	26		
Concrete Sealer	Sq. Ft.	555		

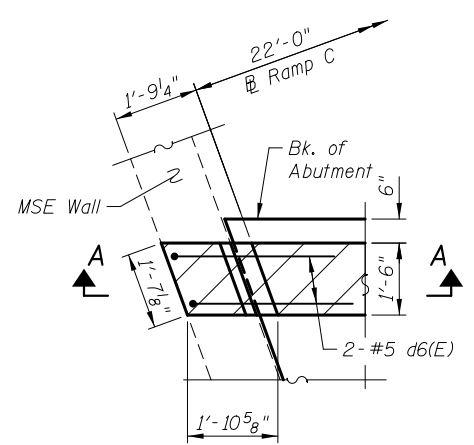
\* Bar Splicers shall be placed parallel to the Approach Slab reinforcement.

\*\* Measured at F.F. of Backwall.

\*\*\* Piles shall be driven after excavating to the bottom of the MSE wall and prior to placement of the reinforced select fill and coated with coal tar epoxy from the bottom of the select fill to 1" above the base of the abutment. The cost of the coal tar epoxy coating shall be included with the cost of the Furnishing Piles.

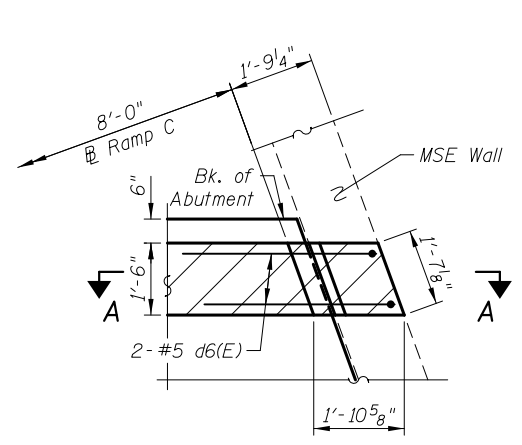


**SECTION A-A**



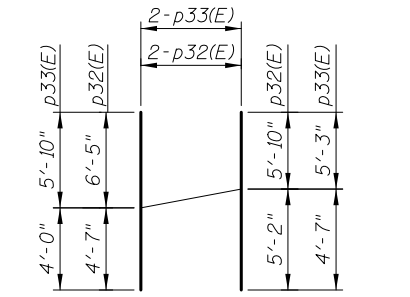
**DETAIL "A"**

(S. Abut. shown - N. Abut. mirror view)



**DETAIL "B"**

(S. Abut. shown - N. Abut. mirror view)



**FIELD CUTTING DIAGRAM**

Notes:  
 Parapets to be poured with the Approach Slab.  
 Space reinforcement in cap to miss anchor bolts.  
 Pour steps monolithically with cap.  
 For details of Bar Splicers, see sheet SD27.  
 Concrete Sealer shall be applied to the designated areas of the backwalls and bridge seats of the abutments.