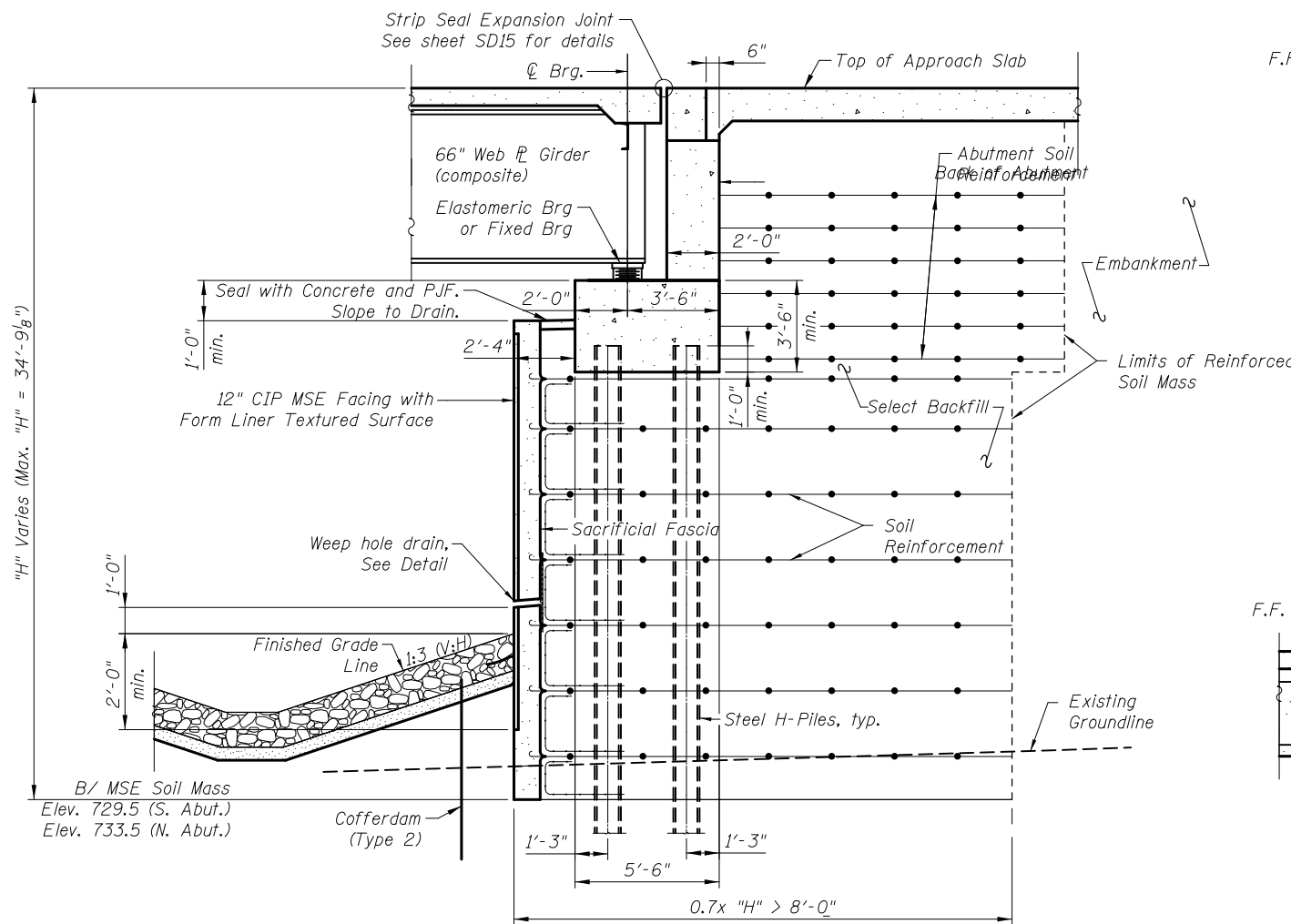


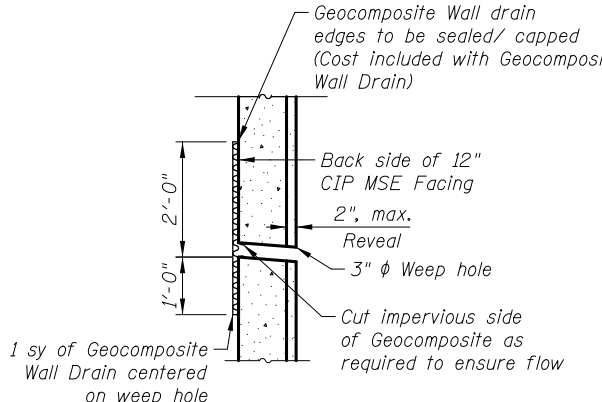
5/2/2012 4:29:39 PM J:\2154\cad\sheet\Roadway\20-Structures & Walls\05-SN 056-0080\0560080-60F72-24-WMD_rev.dgn



TYPICAL ABUTMENT SECTION

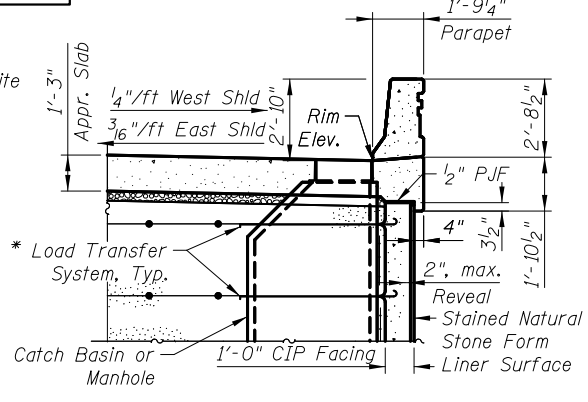
Horizontal dimensions are at right angles

The MSE Wall supplier shall design the abutment soil reinforcement to resist an unfactored horizontal force of 3.3 kips/ft. of abutment.
 The MSE wall supplier's internal stability design shall account for the anchorage slab's bearing pressure surcharge of 1.0 ksf and horizontal sliding force of 0.5 kips/ft. of wall.



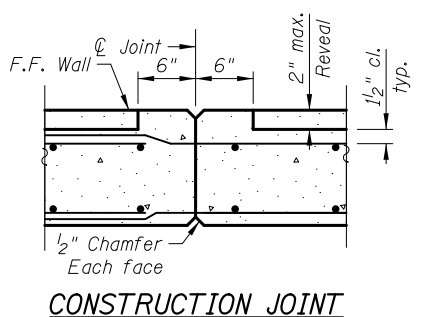
WEEP HOLE DRAIN DETAIL

Weep hole spacing shall be at ±8'-0" horizontally

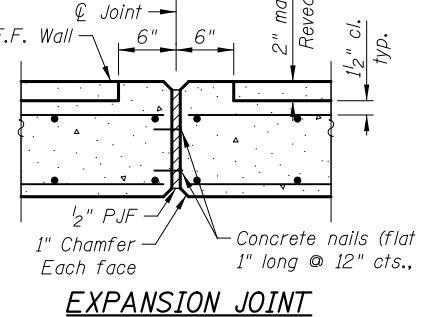


SECTION THRU DRAINAGE STRUCTURE

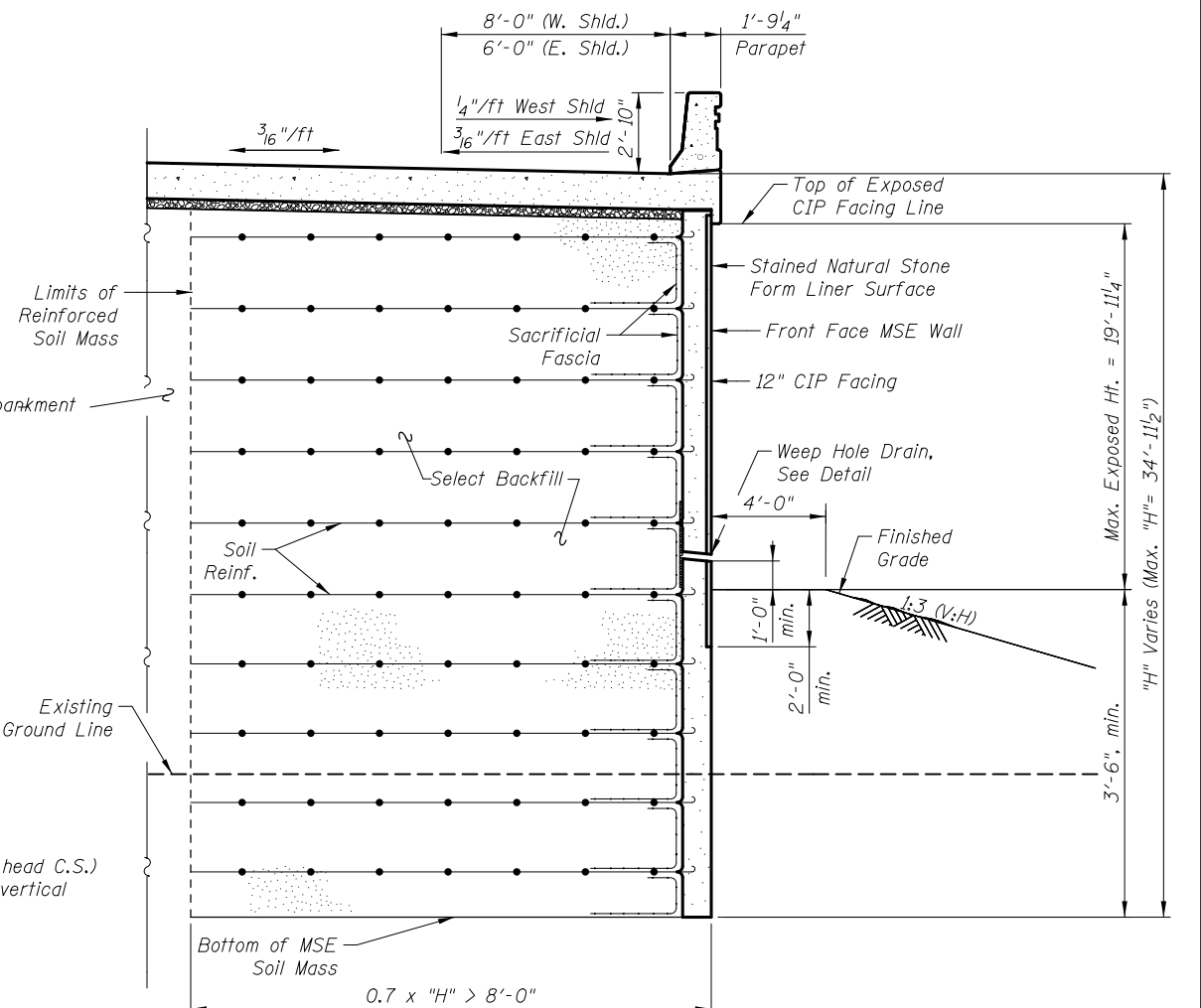
* M.S.E. supplier to design load transfer system to accommodate concrete pipe and catch basin



CONSTRUCTION JOINT

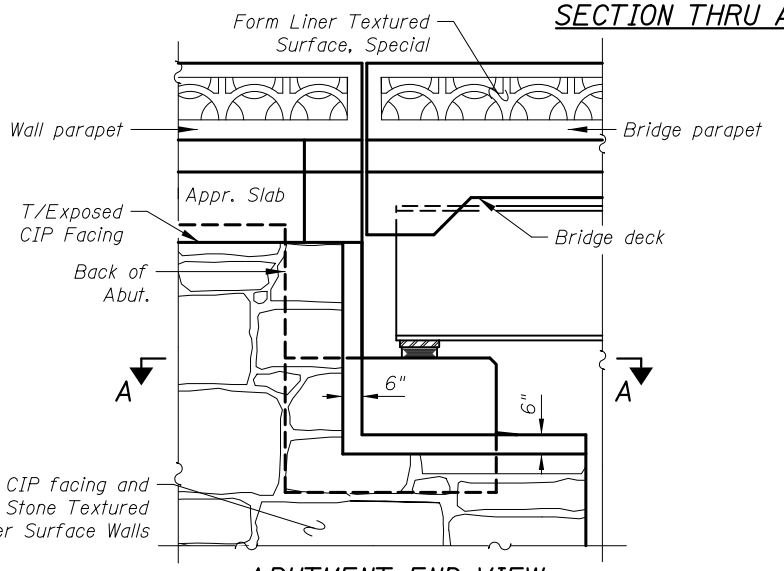


EXPANSION JOINT



SECTION THRU APPROACH SLAB AND MSE WING WALLS

(Horiz. Dim. @ Rt. L's)

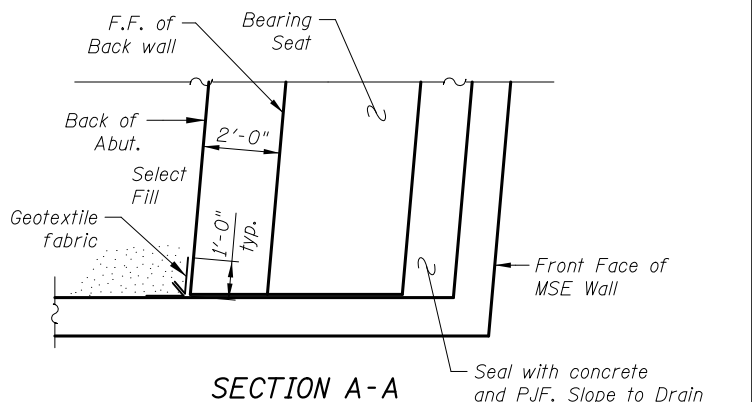


ABUTMENT END VIEW

Notes:
 For Section Thru Anchorage Slabs see sheet SD26.
 Seal with Concrete and P.J.F. shall be paid for as Concrete Structures.
 Geotextile Fabric shall be paid for as Mechanically Stabilized Earth Retaining Wall.
 For Form Liner Texture Surface Details see sheet SD23.
 See sheet SD1 for layout of settlement platforms.

BILL OF MATERIAL

| ITEM | UNIT | TOTAL |
|--|---------|-------|
| Structure Excavation | Cu. Yd. | 30 |
| Concrete Structures | Cu. Yd. | 1.1 |
| Form Liner Textured Surface | Sq. Ft. | 3,364 |
| Geocomposite Wall Drain | Sq. Yd. | 42 |
| Mechanically Stabilized Earth Retaining Wall | Sq. Ft. | 5,334 |
| Staining Concrete Structures | Sq. Yd. | 374 |



SECTION A-A

CIVILTECH
 450 E Devon Ave, Suite 300
 Itasca, Illinois 60143
 Tel: 630.773.3900 Fax: 630.773.3975
 www.civiltechinc.com

| | | | |
|----------|----------------|---------|---|
| DRAWN | - M. LANGE | REVISED | - |
| DESIGNED | - D. ATKINS | REVISED | - |
| CHECKED | - G. HATLESTAD | REVISED | - |
| DATE | - 5/3/2012 | REVISED | - |

**STATE OF ILLINOIS
 DEPARTMENT OF TRANSPORTATION**

**MSE WALL DETAILS
 SB ENTR. RAMP (RAMP C) OVER CRYSTAL CREEK
 STRUCTURE NO. 056-0080**

| | | | | |
|--------------------|---------|---------|--------------|-----------|
| O.R. RTE. | SECTION | COUNTY | TOTAL SHEETS | SHEET NO. |
| 0003 | 18A-2 | MCHENRY | 825 | 578 |
| CONTRACT NO. 60F72 | | | | |

SHEET NO. SD24 OF SD30 SHEETS

ILLINOIS FED. AID PROJECT