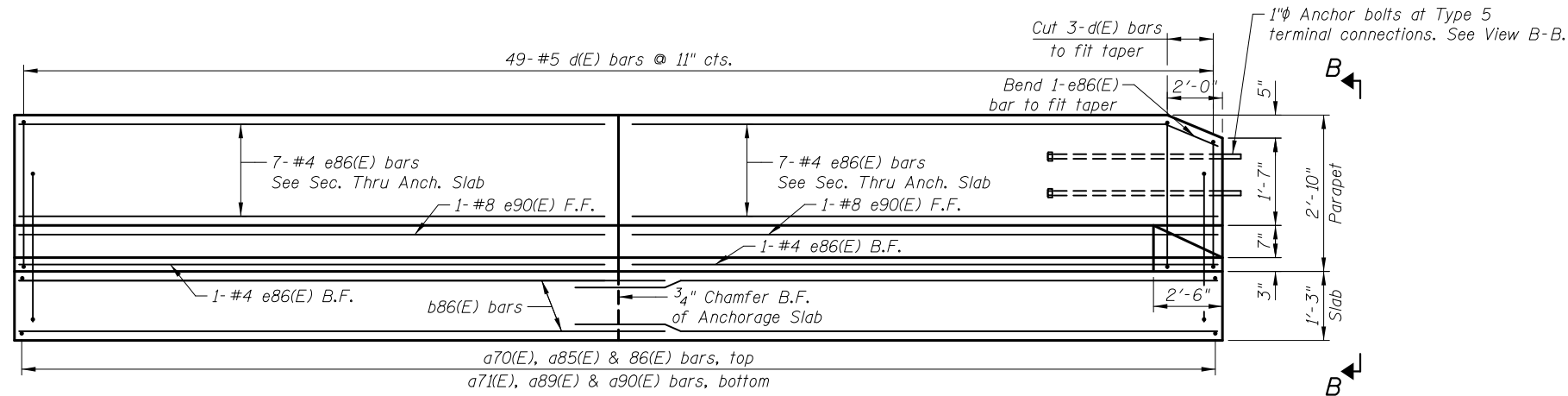
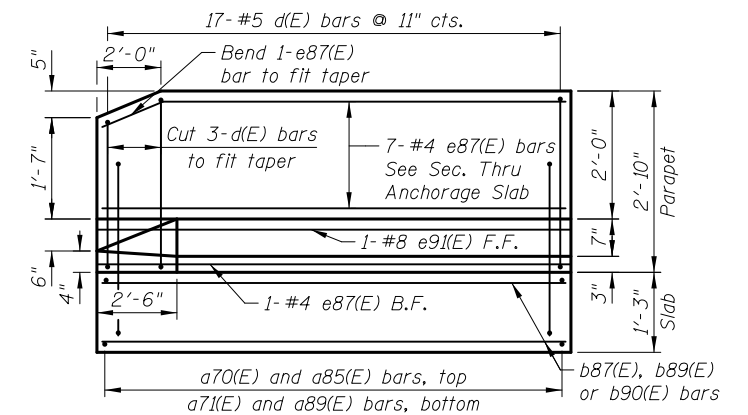


**MINIMUM BAR LAP**

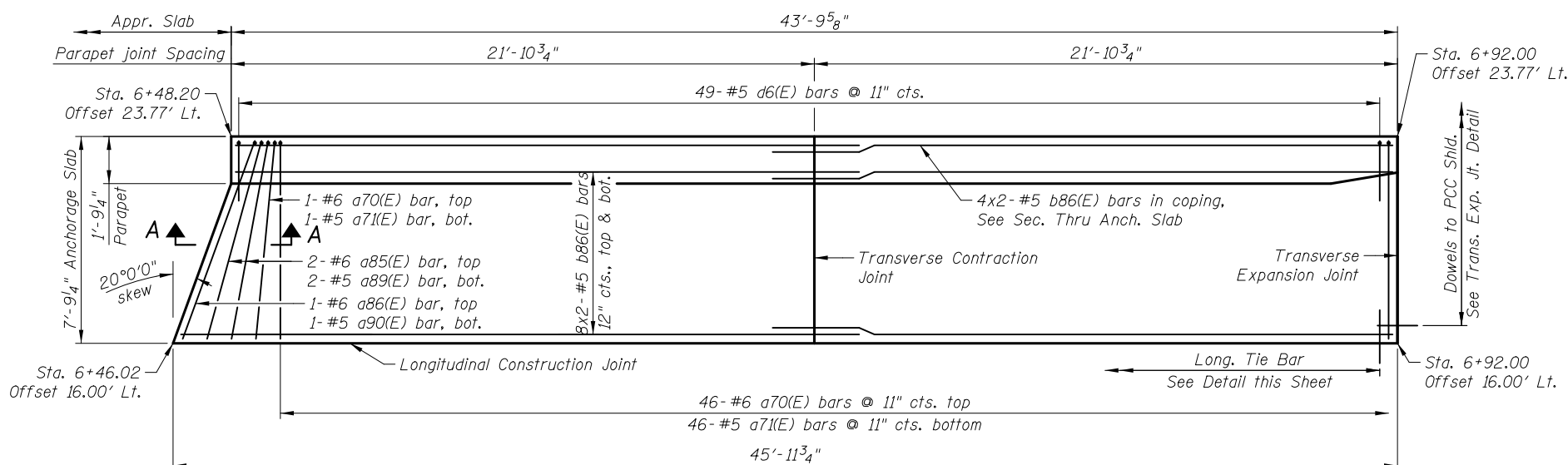
#5 bar = 3'-3"



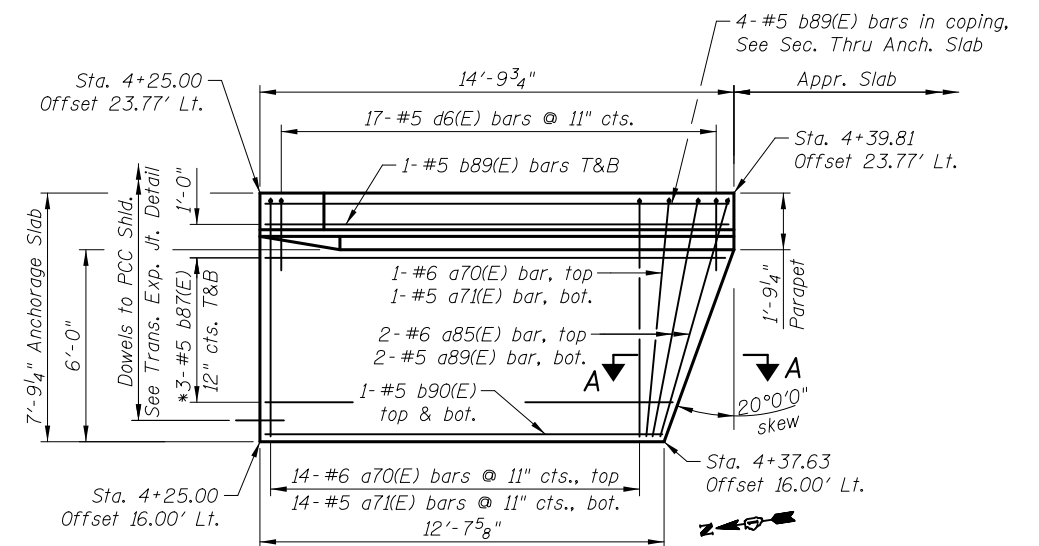
**ELEVATION SE ANCHORAGE SLAB**  
(Front face of parapet)



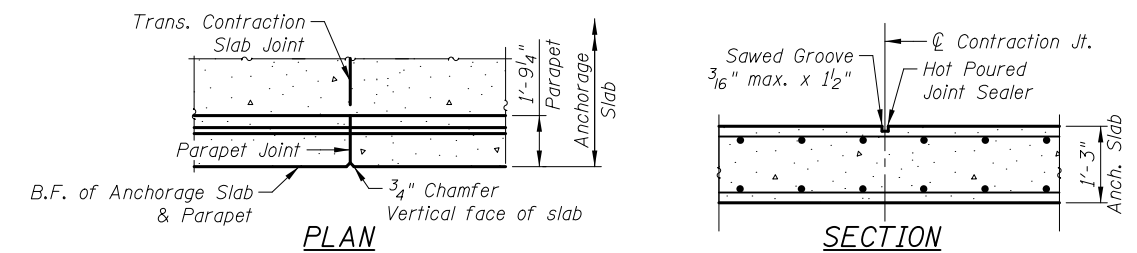
**ELEVATION NE ANCHORAGE SLAB**  
(Front face of parapet)



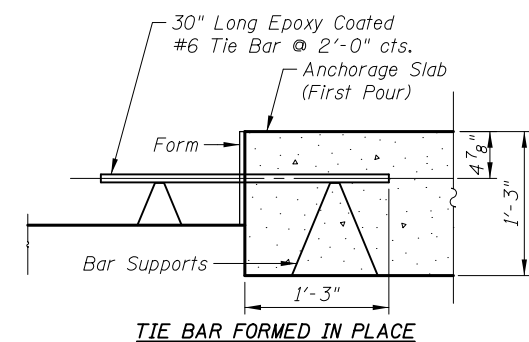
**PLAN SE ANCHORAGE SLAB**



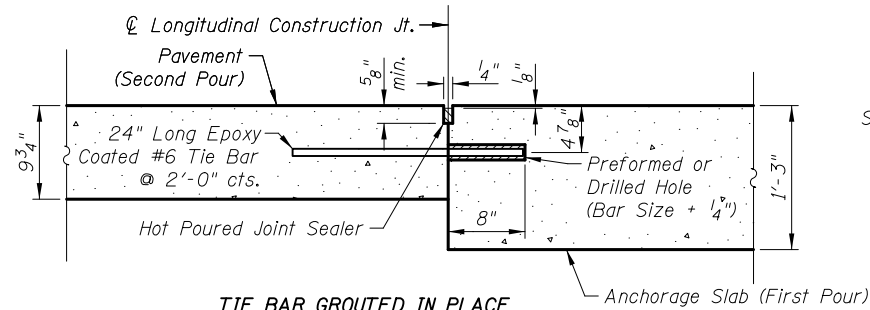
**PLAN NE ANCHORAGE SLAB**



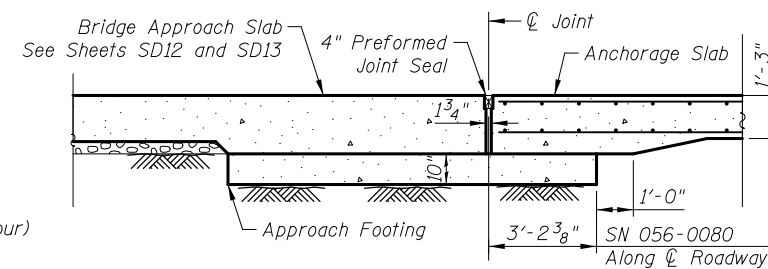
**TRANSVERSE CONTRACTION JOINT**  
See Art. 420.05(c) of Standard Specifications



**TIE BAR FORMED IN PLACE**



**TIE BAR GROUTED IN PLACE**



**SECTION A-A**

**LONGITUDINAL CONSTRUCTION JOINT**

\* See Field Cutting Diagram on sheet SD26.

Notes:  
See sheet SD26 for View B-B, Section Thru Anchorage Slab and Transverse Expansion Joint Detail.  
See sheet SD26 for Bill of Materials and Bar Diagrams.

4/21/40 PM  
 I:\2154\cad\sheet\Roadway\20-Structures & Walls\05-SN 056-0080\0560080-60F72-25-ANS\_Rev.dgn  
 5/2/2012

|          |                |         |   |
|----------|----------------|---------|---|
| DRAWN    | - M. LANGE     | REVISED | - |
| DESIGNED | - D. ATKINS    | REVISED | - |
| CHECKED  | - G. HATLESTAD | REVISED | - |
| DATE     | - 5/3/2012     | REVISED | - |

| O.R. RTE.                 | SECTION | COUNTY  | TOTAL SHEETS | SHEET NO. |
|---------------------------|---------|---------|--------------|-----------|
| 0003                      | 18A-2   | MCHENRY | 825          | 579       |
| <b>CONTRACT NO. 60F72</b> |         |         |              |           |
| ILLINOIS FED. AID PROJECT |         |         |              |           |