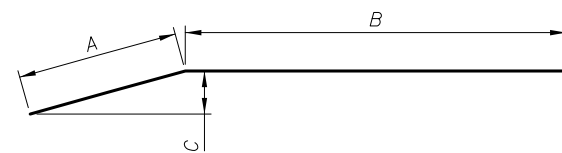


**BILL OF MATERIAL**

Bar	No.	Size	Length	Shape
h40(E)	20	#5	31'-11"	
h41(E)	20	#5	28'-4"	
h42(E)	2	#5	24'-10"	
h43(E)	2	#5	30'-3"	
h44(E)	4	#5	19'-8"	
h45(E)	2	#5	24'-8"	
h46(E)	108	#5	32'-7"	
h47(E)	62	#5	29'-0"	
h48(E)	2	#5	33'-0"	
h49(E)	2	#5	32'-9"	
h50(E)	58	#5	31'-7"	
h51(E)	4	#5	27'-11"	
h52(E)	20	#5	28'-10"	
h53(E)	2	#5	27'-8"	
h54(E)	2	#5	3'-9"	
h55(E)	20	#5	13'-8"	
h56(E)	2	#5	4'-10"	
h57(E)	2	#5	21'-10"	
h58(E)	2	#5	32'-10"	
h59(E)	30	#5	28'-1"	
h60(E)	2	#5	31'-8"	
h61(E)	20	#5	32'-5"	
h62(E)	2	#5	28'-11"	
h63(E)	7	#5	30'-10"	
h64(E)	7	#5	31'-5"	

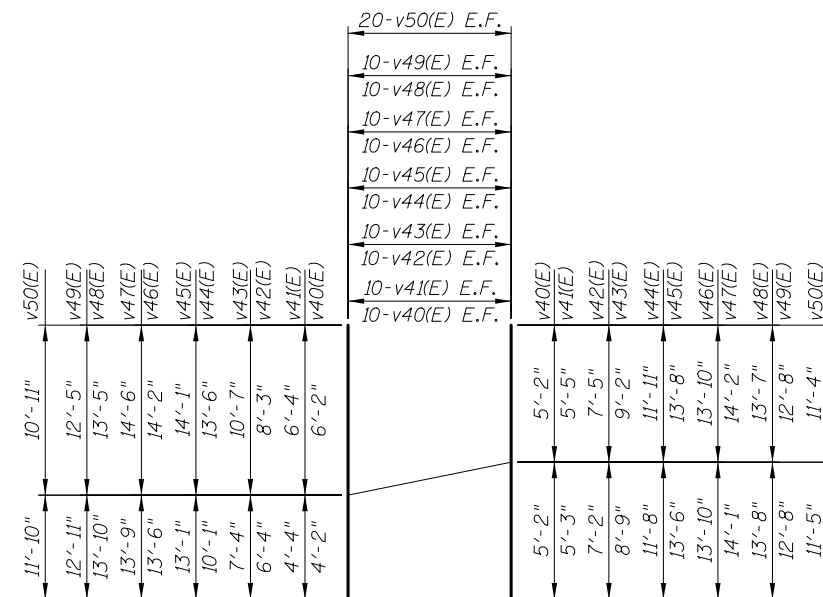
v40(E)	20	#4	10'-4"	
v41(E)	20	#4	10'-8"	
v42(E)	20	#4	14'-7"	
v43(E)	20	#4	17'-11"	
v44(E)	20	#4	23'-7"	
v45(E)	20	#4	27'-2"	
v46(E)	20	#4	27'-8"	
v47(E)	20	#4	28'-3"	
v48(E)	20	#4	27'-3"	
v49(E)	20	#4	25'-4"	
v50(E)	40	#4	22'-9"	
v51(E)	20	#4	19'-0"	
v52(E)	8	#4	17'-2"	
v53(E)	32	#4	15'-9"	
v54(E)	20	#4	13'-9"	
v55(E)	4	#4	13'-5"	
v56(E)	10	#4	11'-7"	

Item	Unit	Quantity
Structure Excavation	Cu. Yd.	458
Concrete Structures	Cu. Yd.	213.6
Form Liner Textured Surface	Sq. Ft.	4,515
Stud Shear Connectors	Each	602
Reinforcement Bars, Epoxy Coated	Pound	16,860
Geocomposite Wall Drain	Sq. Yd.	317
Drilling and Setting Soldier Piles (In Soil)	Cu. Ft.	4,621
Untreated Timber Lagging	Sq. Ft.	3,868
Furnishing Soldier Piles (W Section)	Foot	1,455
Pipe Underdrains for Structures 4"	Foot	575
Staining Concrete Structures	Sq. Yd.	502

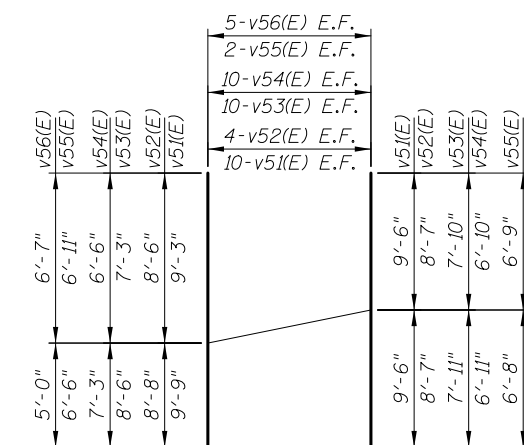


Bar	A	B	C
h58(E)	3'-5"	29'-5"	3 1/2"
h59(E)	8'-2"	19'-11"	1'-1 1/2"
h60(E)	28'-1"	3'-7"	1'-2 1/4"
h61(E)	3'-4"	29'-1"	1 5/8"
h62(E)	3'-4"	25'-7"	1 5/8"
h63(E)	3'-5"	27'-5"	2'-4"
h64(E)	3'-9"	27'-8"	2'-6 3/4"

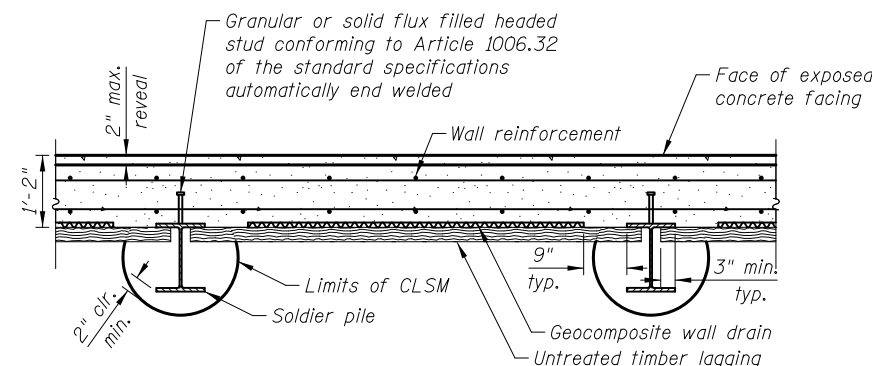
**BARS h57(E) thru h64(E)**



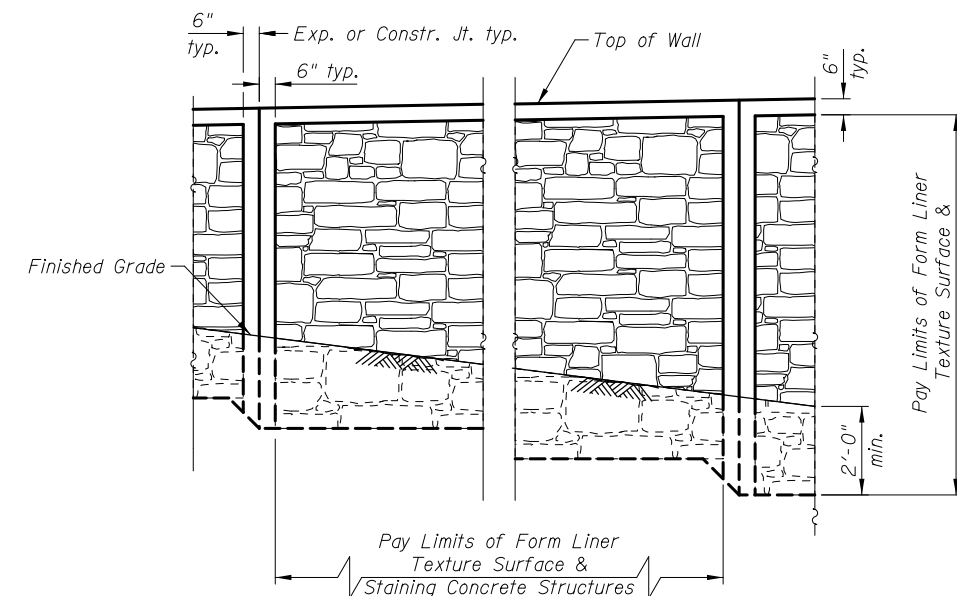
**FIELD CUTTING DIAGRAM**



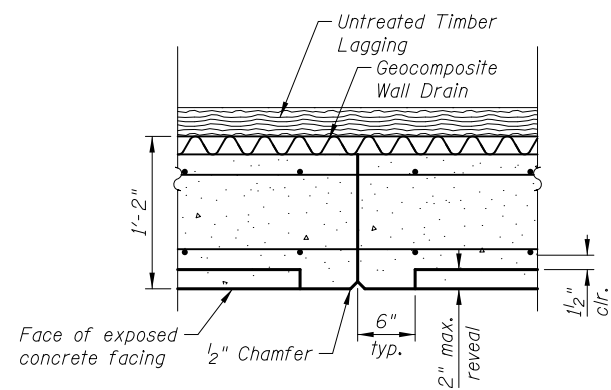
**FIELD CUTTING DIAGRAM**



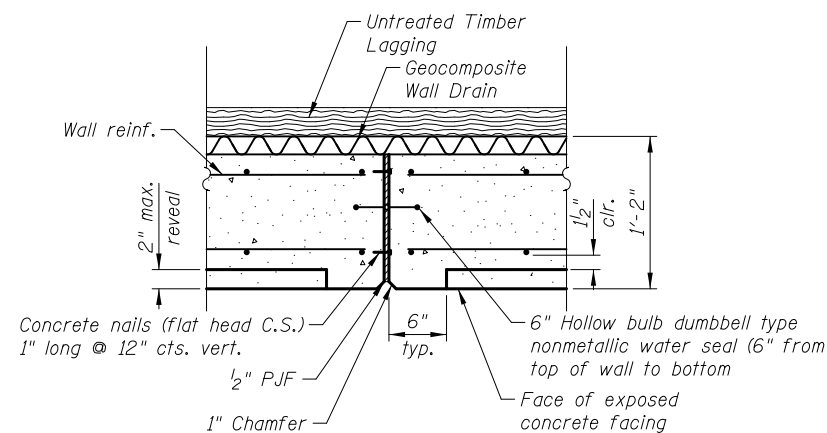
**SECTION THRU DRILLED SOLDIER PILE WALL**



**FORM LINER TEXTURE SURFACE DETAIL**



**CONSTRUCTION JOINT**



**EXPANSION JOINT**

5/2/2012 4:22:21 PM I:\2154\cad\sheet\Roadway\20-Structures & Walls\06-Wall A\0562507-60F72-07-GD.dgn