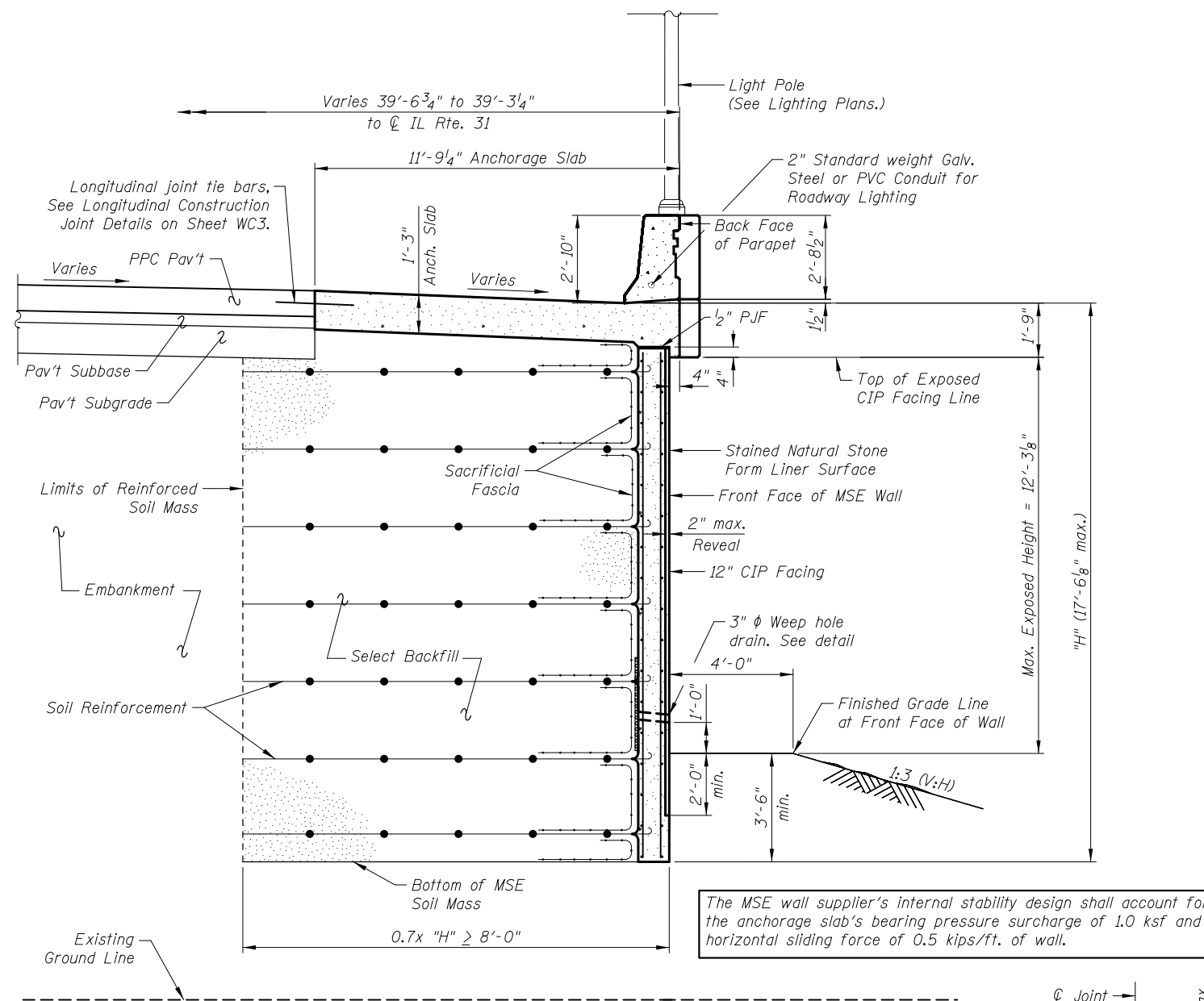
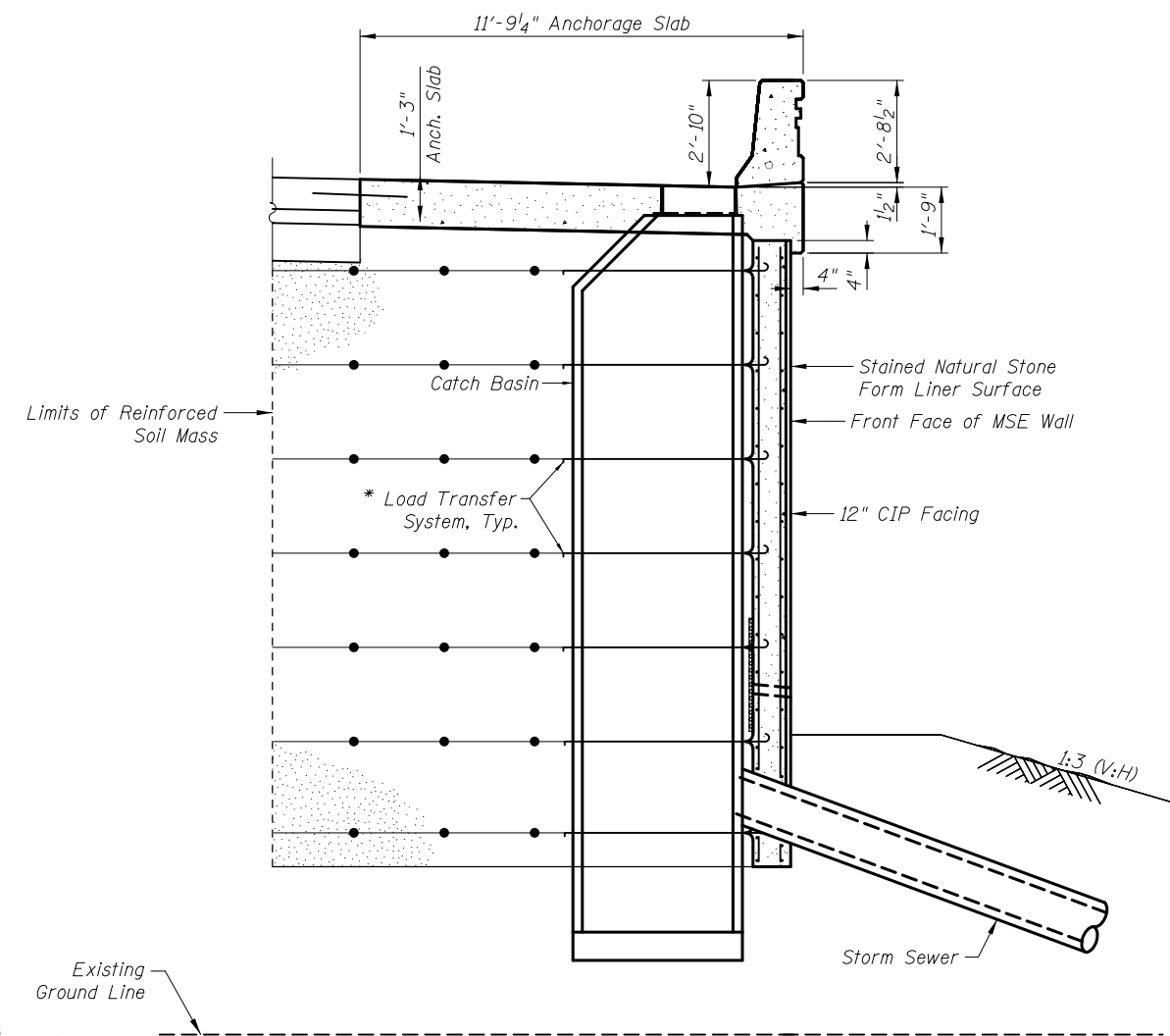


4/23/2012 4:23:02 PM J:\2154\cad\sheet\Roadway\20-Structures & Walls\08-Wall C\0562500-60F72-02-WD\_rev.dgn

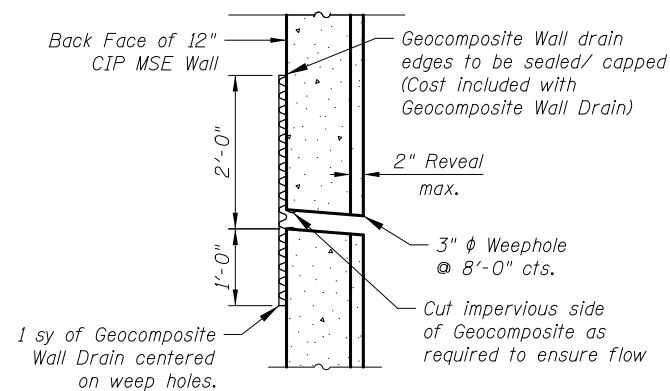


**TYPICAL WALL SECTION**  
(Looking North)

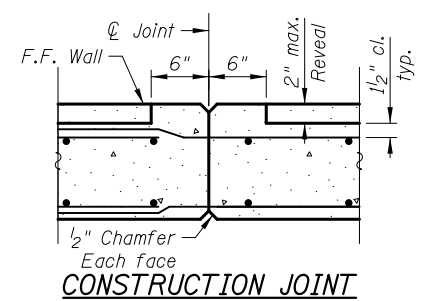


**SECTION AT DRAINAGE STRUCTURE**  
(Looking North)  
(See Typical Wall Section for remainder of details)

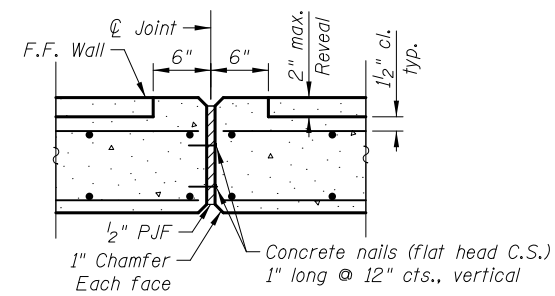
\* MSE supplier to design load transfer system to accommodate concrete pipe and catch basin.



**WEEP HOLE DRAIN DETAIL**  
Weep hole spacing shall be at 8'-0" horizontally



**CONSTRUCTION JOINT**



**EXPANSION JOINT**

**MSE WALL BILL OF MATERIAL**

ITEM	UNIT	TOTAL
Form Liner Textured Surface	Sq. Ft.	940
Geocomposite Wall Drain	Sq. Yd.	25
Staining Concrete Structures	Sq. Yd.	104
Mechanically Stabilized Earth Retaining Walls	Sq. Ft.	1,232

**Notes:**  
 For Frame & Grate type, catch basin type, and rim elevations, see Drainage & Utility Plans.  
 See sheet WC5 for dimensions and reinforcement of Anchorage Slab.  
 See sheet WC6 for Form Liner Textured Surface details.