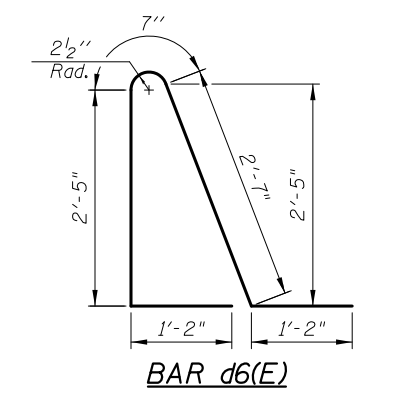
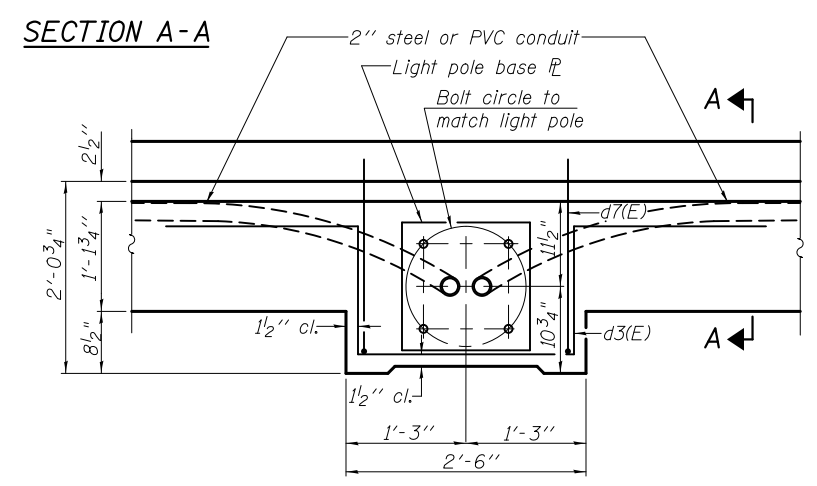
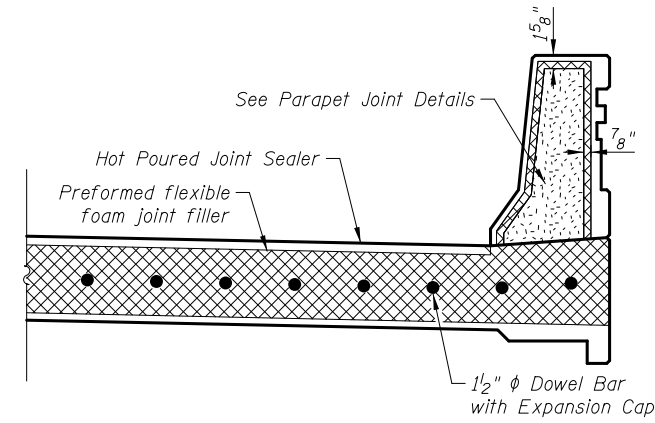
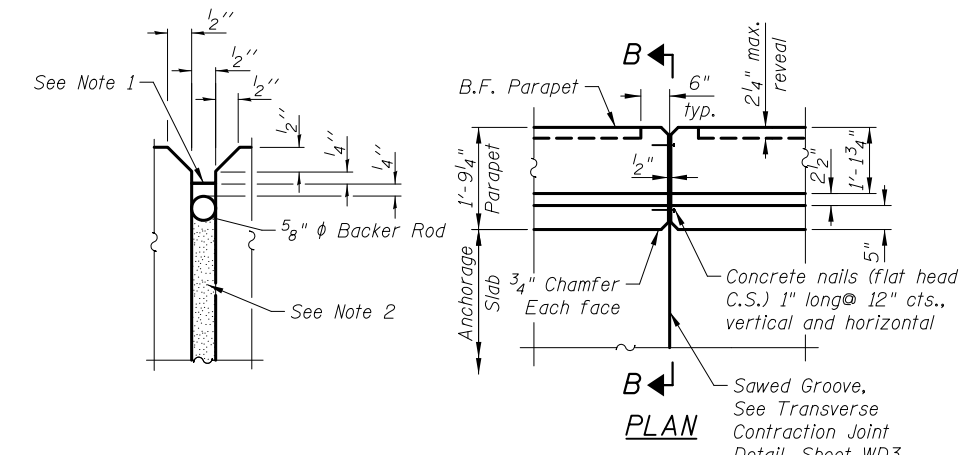
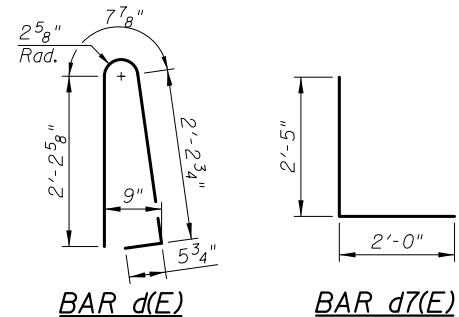
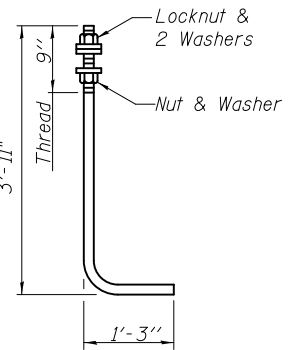
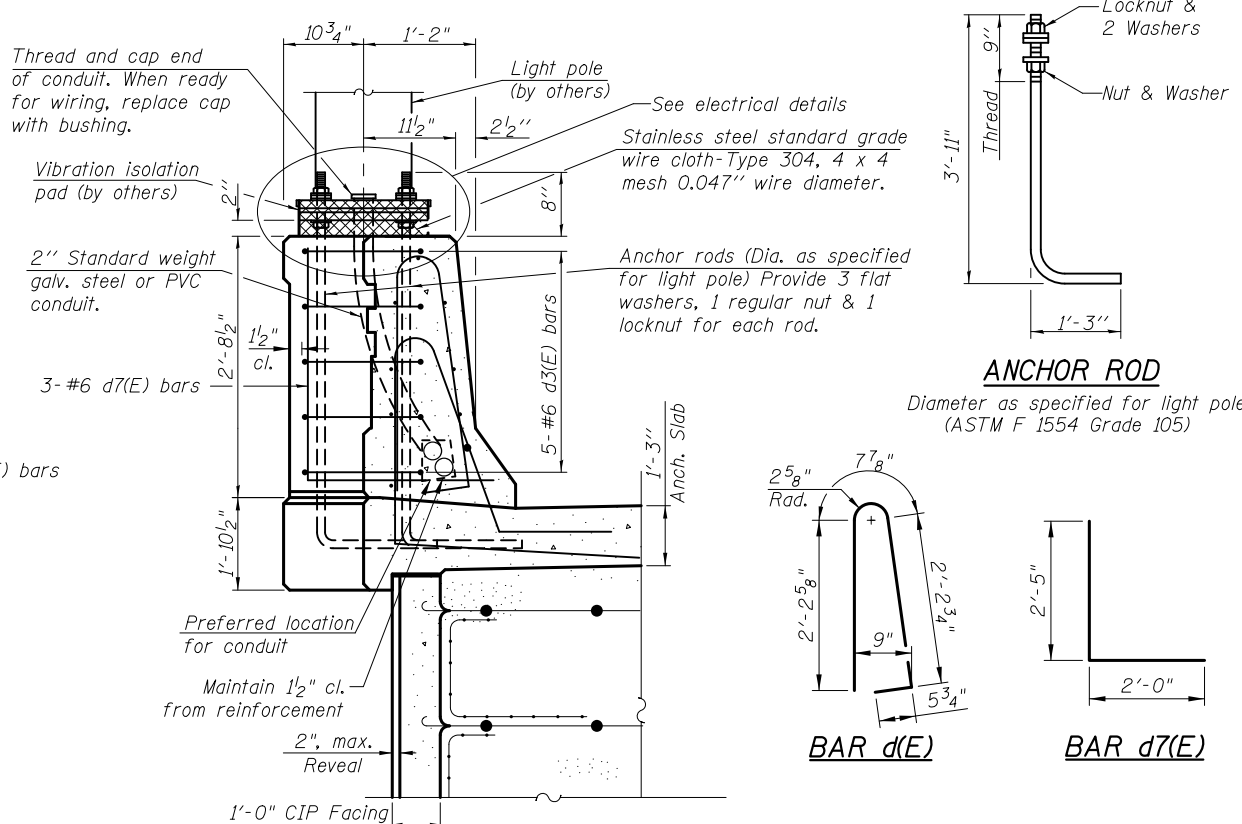
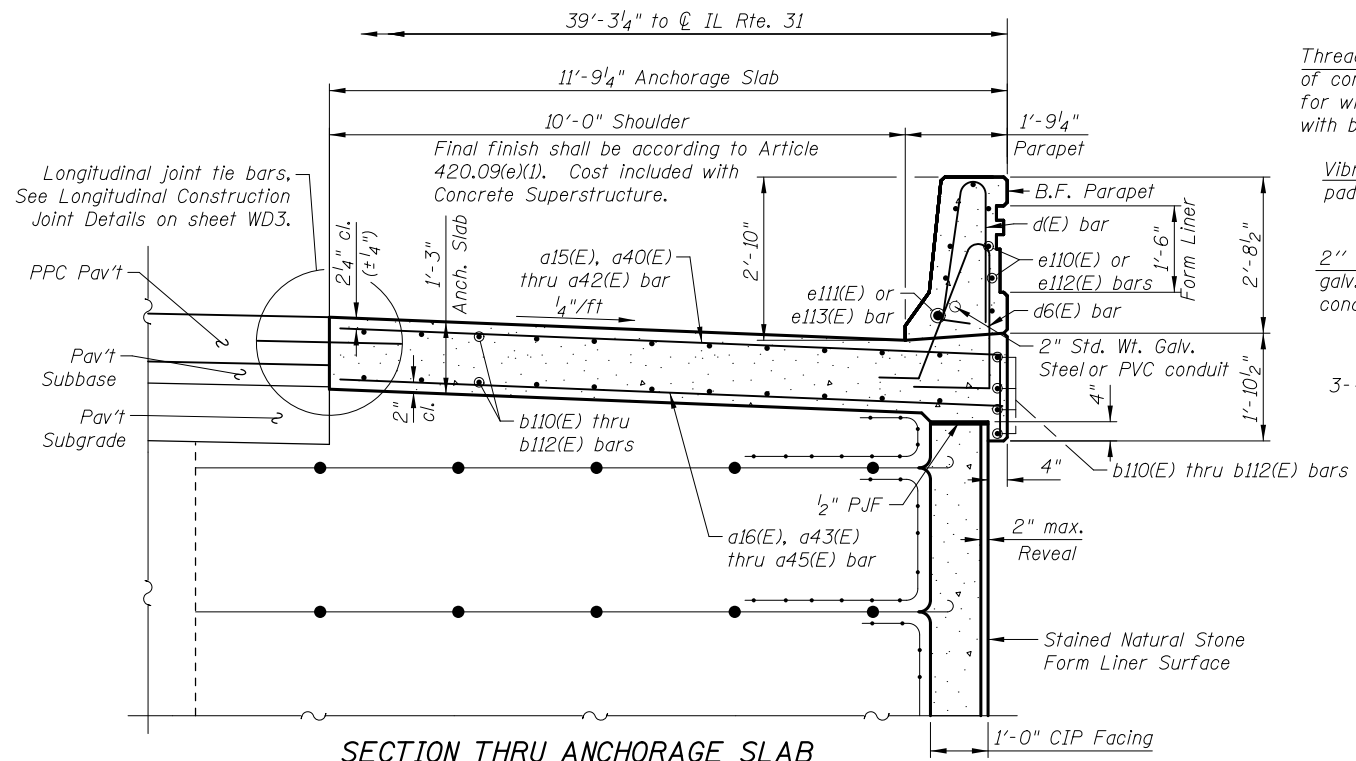
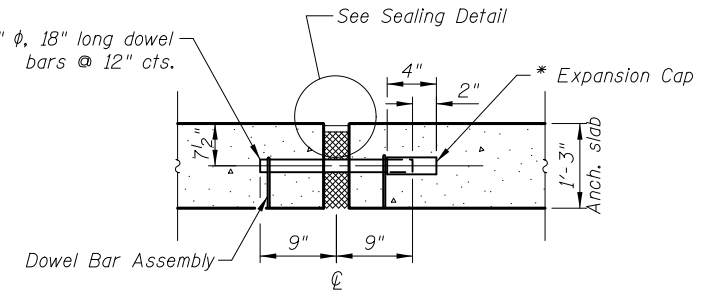
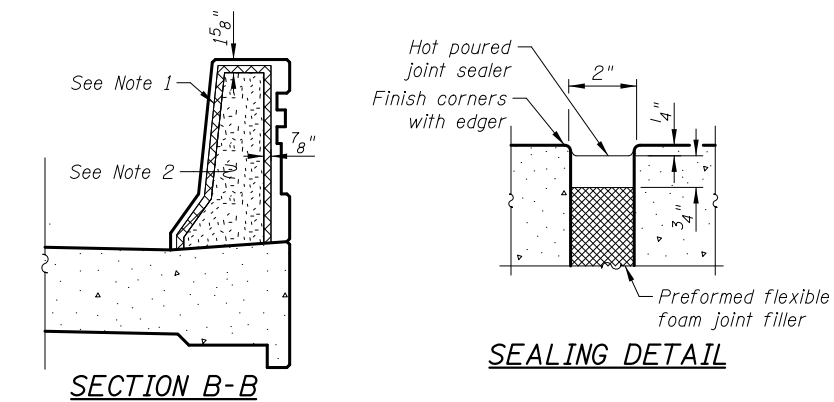


**ANCHORAGE SLAB
BILL OF MATERIAL**

Bar	No.	Size	Length	Shape
a13(E)	16	#5	3'-6"	
a15(E)	305	#6	12'-9"	
a16(E)	305	#5	11'-5"	
a40(E)	2	#6	13'-0"	
a41(E)	1	#6	13'-4"	
a42(E)	1	#6	13'-7"	
a43(E)	2	#5	11'-8"	
a44(E)	1	#5	12'-0"	
a45(E)	1	#5	12'-3"	
b110(E)	112	#5	27'-11"	
b111(E)	88	#5	30'-5"	
b112(E)	112	#5	26'-3"	
d(E)	307	#5	5'-7"	
d3(E)	10	#6	8'-11"	
d6(E)	307	#5	7'-11"	
d7(E)	6	#6	4'-5"	
e110(E)	88	#4	16'-8"	
e111(E)	11	#8	16'-8"	
e112(E)	40	#4	18'-0"	
e113(E)	5	#8	18'-0"	
Items	Units	Quantity		
Concrete Superstructures	Cu. Yd.	195.4		
Protective Coat	Sq. Yd.	439		
Reinforcement Bars, Epoxy Coated	Pound	25,470		
Form Liner Textured Surface, Special	Sq. Ft.	383		

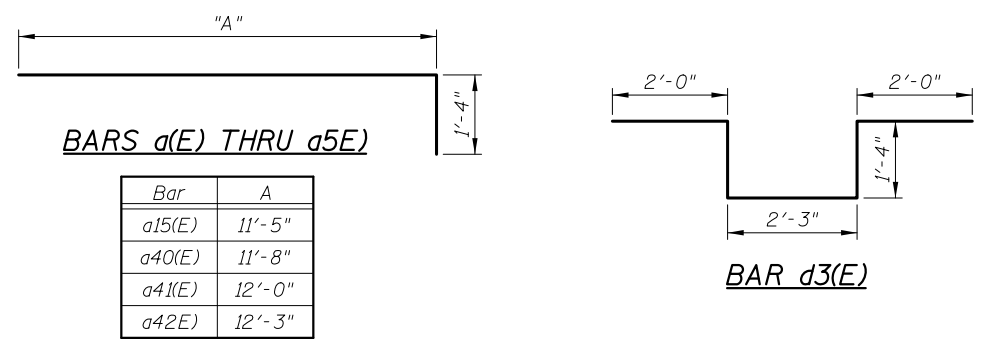


- PARAPET JOINT NOTES:**
- Non-staining gray one component non-sag elastomeric gun grade polyurethane sealant meeting the requirements of ASTM C-920, Type S, Grade NS, Class 25, use T with a 5/8\" backer rod.
 - 1/2\" Preformed Self-Expanding Cork Joint Filler according to Article 1051.07 of the Std. Spec. Cost included with Concrete Superstructure.



TRANSVERSE EXPANSION JOINT
Expansion Joint and Dowel Bars included in the cost of Concrete Superstructures.
* Expansion caps shall be installed on the exposed end of each dowel bar once the header has been removed and the joint filler material has been installed.

Notes:
Cost of anchor rods and conduit in Light Pole Foundation included with Concrete Superstructure.
See sheet WD6 for Form Liner Textured Surface, Special details.



4/23/38 PM 4:26:41 cad\sheet\Roadway\20-Structures & Walls\05-Wall D: IL RTE 31-05-AND_rev.dgn 5/2/2012