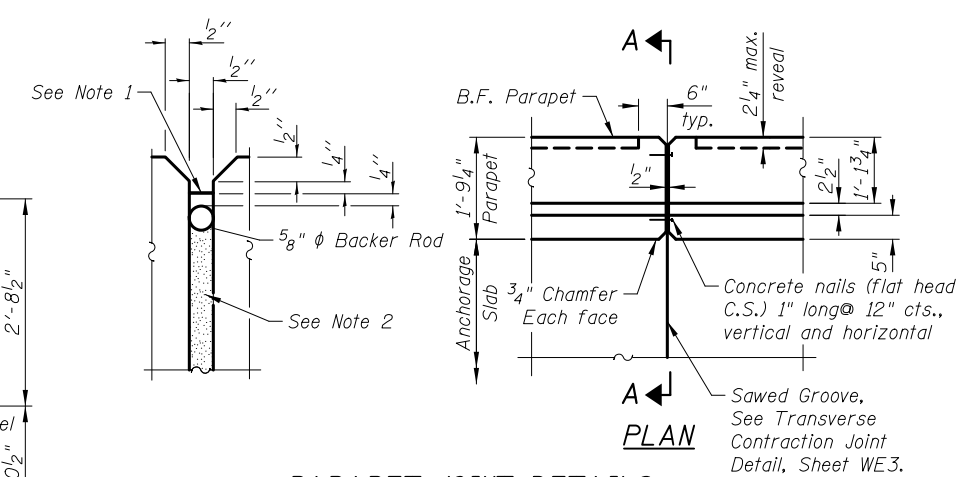
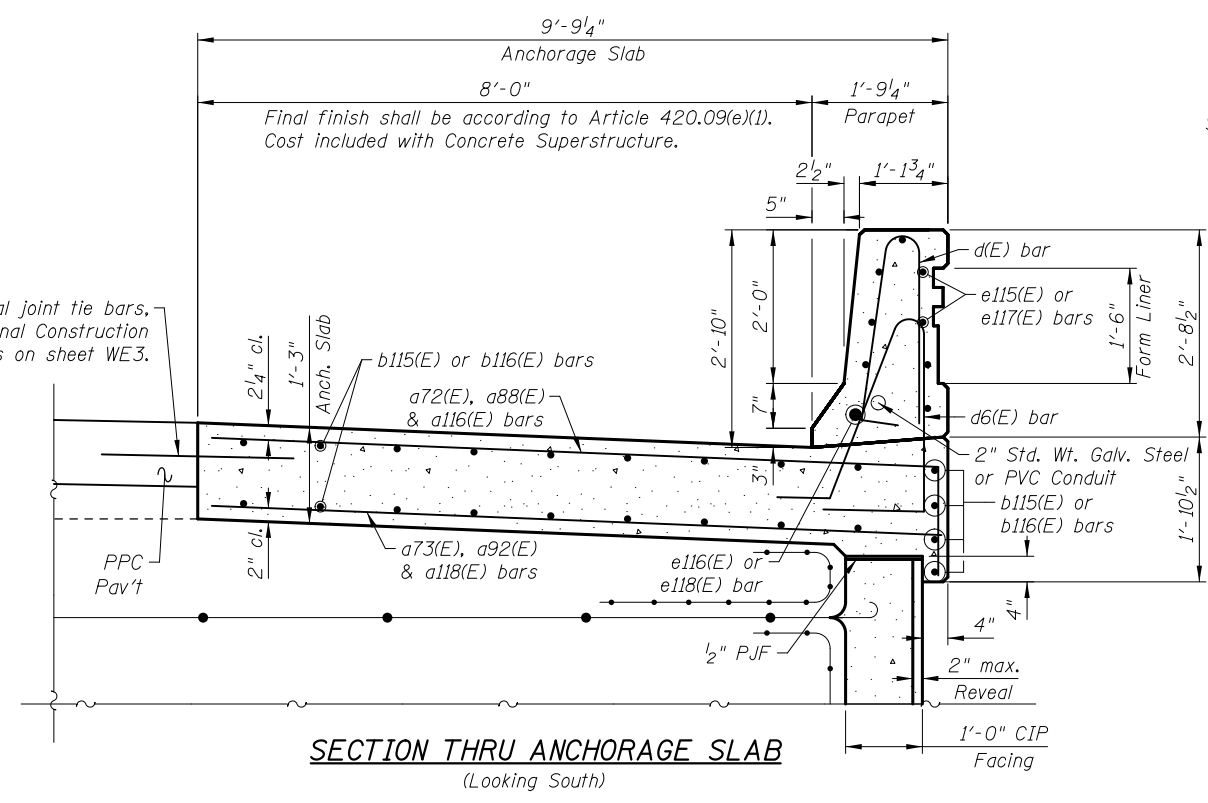


**ANCHORAGE SLAB
BILL OF MATERIAL**

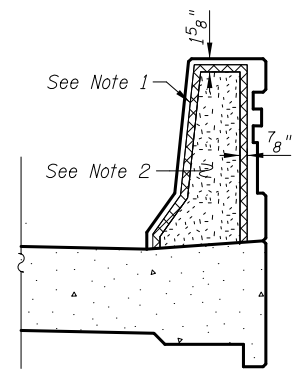
Bar	No.	Size	Length	Shape
a13(E)	8	#5	3'-6"	—
a72(E)	153	#6	10'-9"	—
a73(E)	153	#5	9'-5"	—
a88(E)	2	#6	11'-2"	—
a92(E)	2	#5	9'-10"	—
a116(E)	1	#6	11'-4"	—
a118(E)	1	#5	10'-0"	—
b115(E)	44	#5	23'-8"	—
b116(E)	88	#5	26'-9"	—
d(E)	153	#5	5'-7"	⏏
d6(E)	153	#5	7'-11"	⏏
e115(E)	24	#4	14'-5"	—
e116(E)	3	#8	14'-5"	—
e117(E)	48	#4	15'-5"	—
e118(E)	6	#8	15'-5"	—
Item	Unit	Quantity		
Concrete Superstructures	Cu. Yd.	84.6		
Protective Coat	Sq. Yd.	188		
Reinforcement Bars, Epoxy Coated	Pound	10,870		
Form Liner Textured Surface, Special	Sq. Ft.	195		

Note:
See sheet WE5 for Form Liner Textured Surface, Special details.

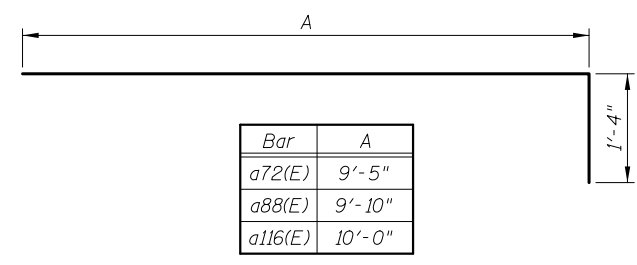


PARAPET JOINT DETAILS

- Parapet Joint Notes:
- Non-staining gray one component non-sag elastomeric gun grade polyurethane sealant meeting the requirements of ASTM C-920, Type S, Grade NS, Class 25, use T with a 5/8" backer rod.
 - 1/2" Preformed Self-Expanding Cork Joint Filler according to Article 1051.07 of the Std. Spec. Cost included with Concrete Superstructure.

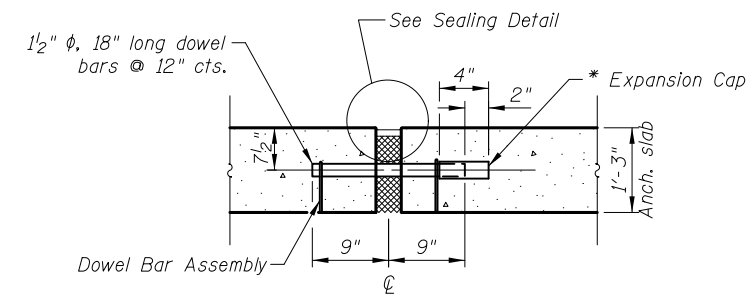


SECTION A-A

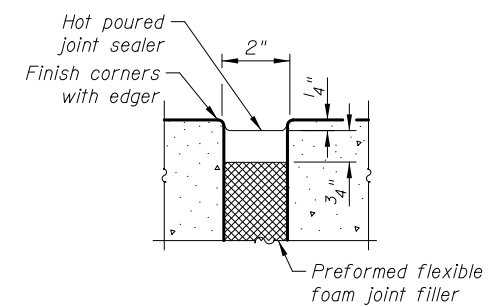


BAR a72(E), a88(E) & a116(E)

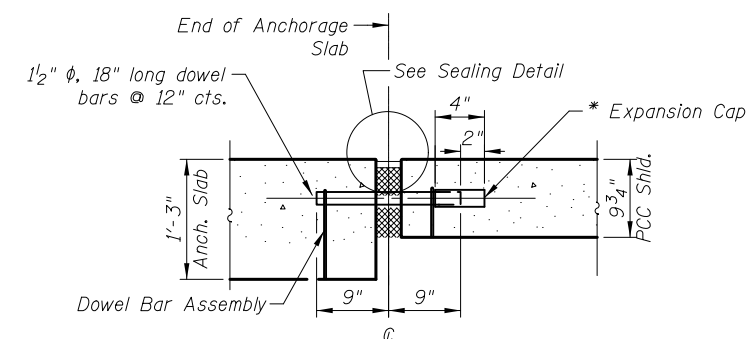
Bar	A
a72(E)	9'-5"
a88(E)	9'-10"
a116(E)	10'-0"



ANCHORAGE SLAB TO ANCHORAGE SLAB



SEALING DETAIL

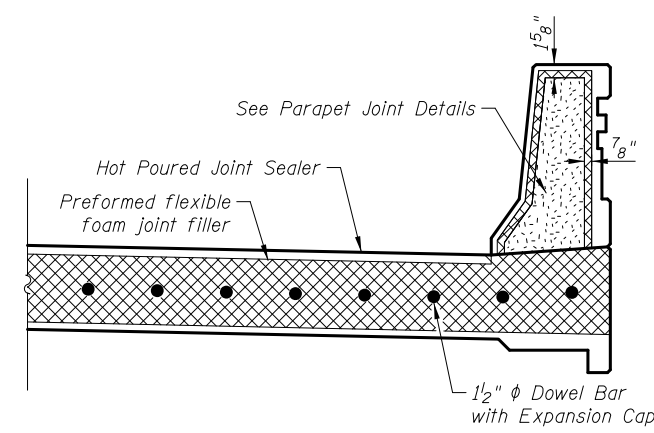


ANCHORAGE SLAB TO PCC SHOULDER

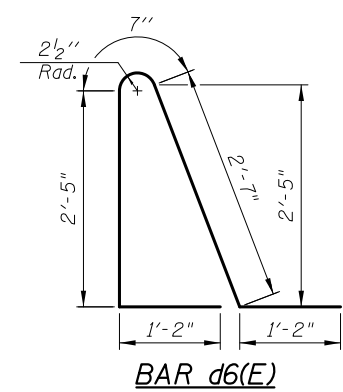
TRANSVERSE EXPANSION JOINT

Expansion Joint and Dowel Bars included in the cost of Concrete Superstructures.

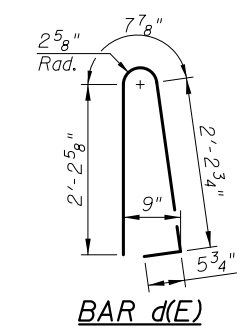
* Expansion caps shall be installed on the exposed end of each dowel bar once the header has been removed and the joint filler material has been installed.



TRANSVERSE EXPANSION JOINT SECTION



BAR d6(E)



BAR d(E)

5/2/2012 4:24:13 PM I:\2154\cad\sheet\Roadway\20-Structures & Walls\10-Wall E.0562502-60F72-04-AND_rev.dgn