

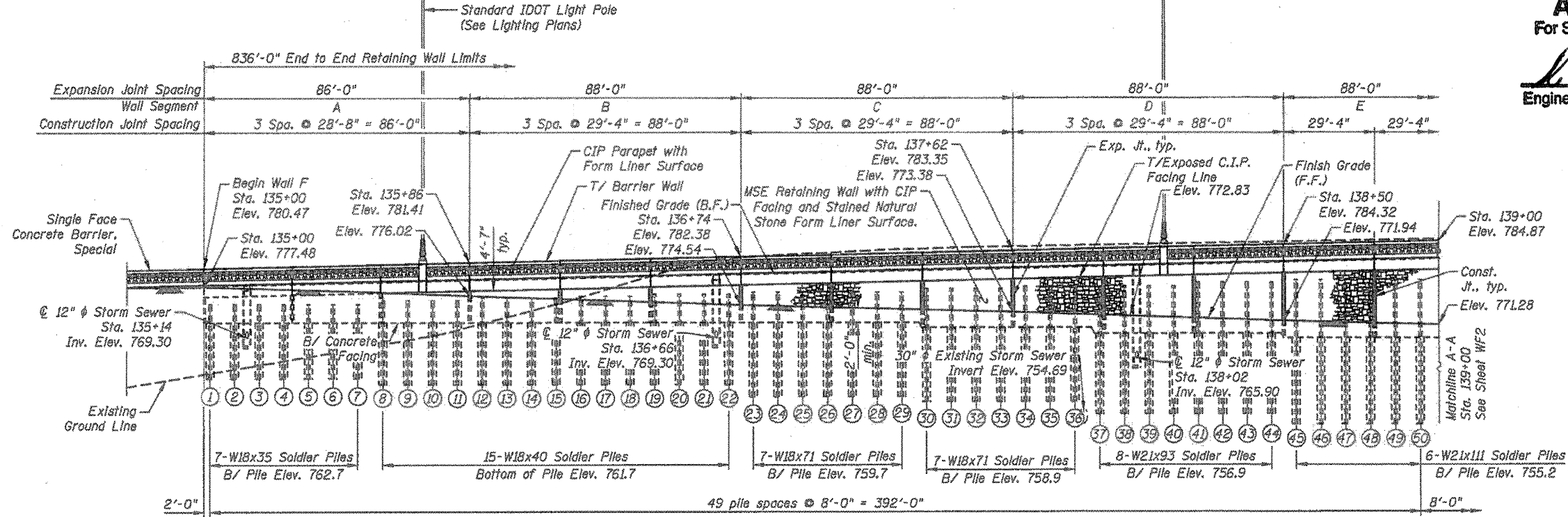
Bench Mark: Iron Rod, Control Point 10, IL Route 31 Bypass Sta. 127+66.44, Offset 99.87 Feet Right, Elev. 737.99
 Existing Structure: None

APPROVED
 For Structural Adequacy Only
Gregory J. Hatlestad
 Engineer of Bridges & Structures

CIVILTECH ENGINEERING, INC.
 GREGORY J. HATLESTAD, S.E.

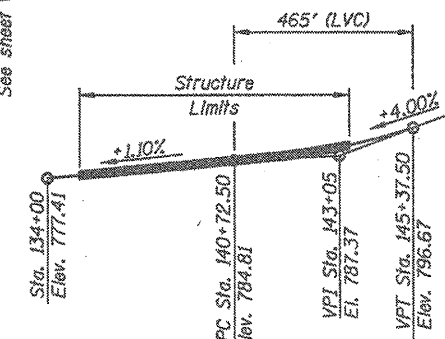


Gregory J. Hatlestad
 GREGORY J. HATLESTAD, S.E.
 # 081-005562
 EXP 11/30/12
 DATE 3/15/12



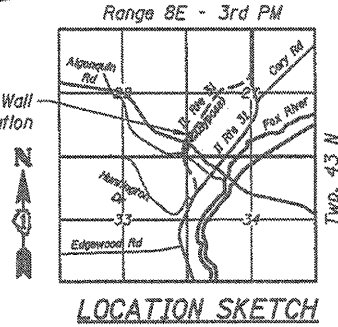
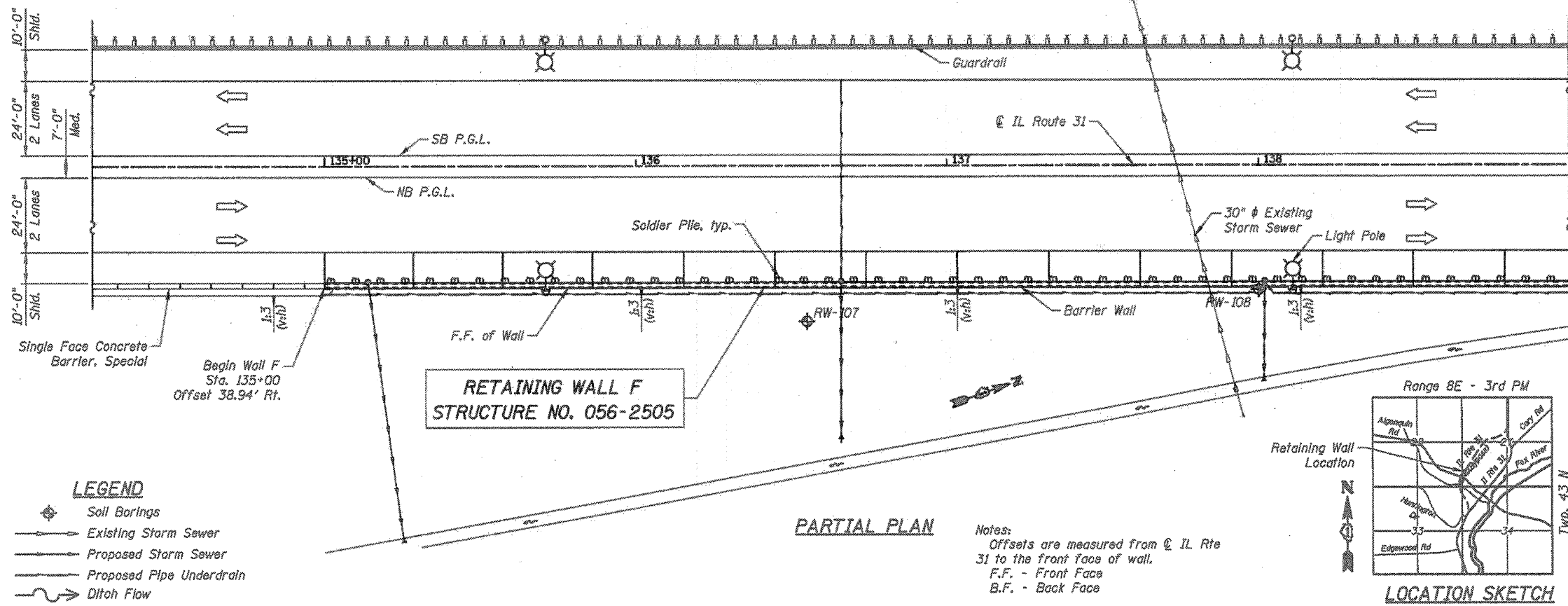
DESIGN SPECIFICATIONS
 2002 AASHTO Standard Specification
 for Highway Bridges, 17th Ed.

DESIGN STRESSES
 FIELD UNITS
 $f'_c = 3,500$ psi
 $f_y = 60,000$ psi (Reinforcement)
 $f_y = 36,000$ psi (M270 Gr. 36 Soldier Piles)



PROPOSED PROFILE
 IL ROUTE 31

GENERAL PLAN AND ELEVATION
 WALL F; RTE. 31 O.R. 0003
 SECTION 18A-2, McHENRY COUNTY
 STA. 135+00 TO STA. 143+36
 STRUCTURE NO. 056-2505



- LEGEND**
- Soil Borings
 - Existing Storm Sewer
 - Proposed Storm Sewer
 - Proposed Pipe Underdrain
 - Ditch Flow

J:\258\A\civil\sheet\roadway\20-Structures & Retaining Wall\0562505-60F72-01-RFE.dgn
 2/23/12 PM
 3/15/2012

CIVILTECH
 450 E Devon Ave, Suite 300
 Itasca, Illinois 60143
 Tel: 630.773.3900 Fax: 630.773.3975
 www.civiltechinc.com

DRAWN - C. BRABAND
 DESIGNED - D. ATKINS
 CHECKED - G. HATLESTAD
 DATE - 3/23/2012

STATE OF ILLINOIS
 DEPARTMENT OF TRANSPORTATION

GENERAL PLAN AND ELEVATION I
 WALL F; IL RTE 31
 STRUCTURE NO. 056-2505
 SHEET NO. WF1 OF WF15 SHEETS

O.R. RTE.	SECTION	COUNTY	TOTAL SHEETS	SHEET NO.
0003	18A-2	MCHEMRY	825	620

CONTRACT NO. 60F72
 ILLINOIS FED. AID PROJECT