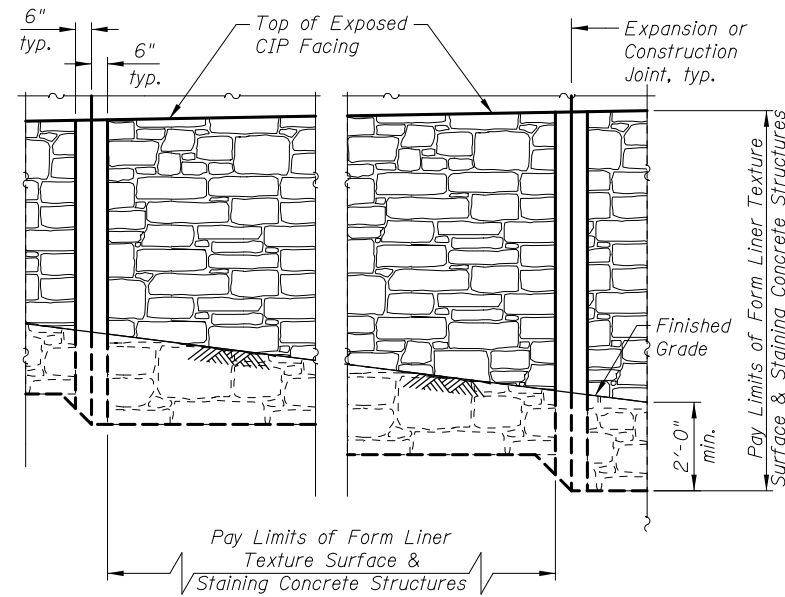
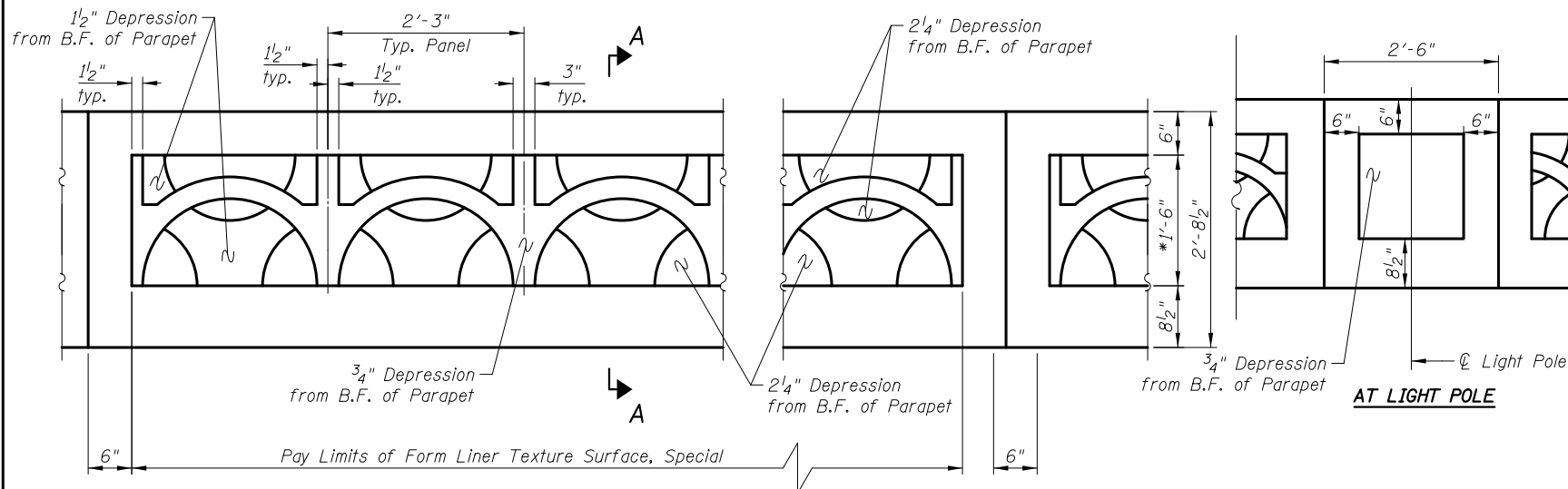


TOTAL BILL OF MATERIALS

ITEM	UNIT	TOTAL QUANTITY
Structure Excavation	Cu. Yd.	958
Concrete Structures	Cu. Yd.	275.4
Concrete Superstructures	Cu. Yd.	581.4
Form Liner Textured Surface	Sq. Ft.	5,914
Protective Coat	Sq. Yd.	1,313
Stud Shear Connectors	Each	763
Reinforcement Bars, Epoxy Coated	Pound	91,210
Geocomposite Wall Drain	Sq. Yd.	395
Drilling and Setting Soldier Piles (In Soil)	Cu. Ft.	5,984
Untreated Timber Lagging	Sq. Ft.	4,784
Furnishing Soldier Piles (W Section)	Foot	1,839
Pipe Underdrains for Structures 4"	Foot	850
Staining Concrete Structures	Sq. Yd.	657
Form Liner Textured Surface, Special	Sq. Ft.	1,155

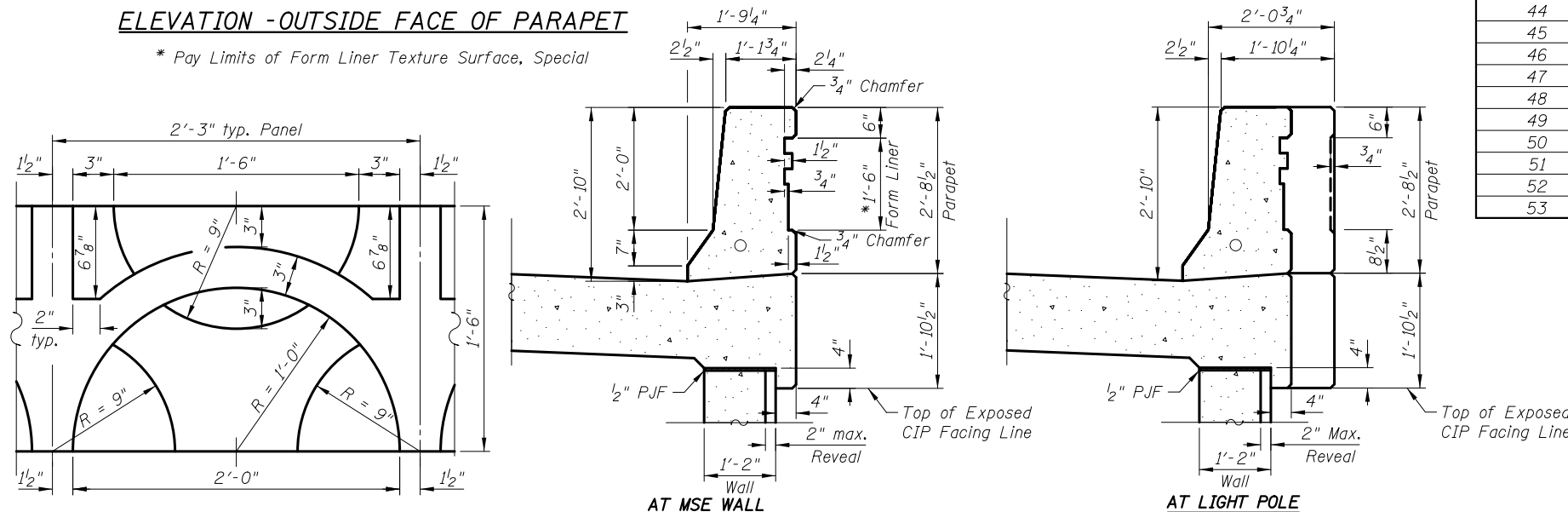


FORM LINER TEXTURE SURFACE DETAIL



ELEVATION - OUTSIDE FACE OF PARAPET

* Pay Limits of Form Liner Texture Surface, Special



FORM LINER TEXTURE SURFACE, SPECIAL DETAIL

AT MSE WALL

SECTION A-A

AT LIGHT POLE

PILE ELEVATIONS

Pile No.	Top of Pile Elevation	Bottom of CIP Facing	Stud Shear Connectors
1	774.70	771.70	4
2	774.70	771.70	4
3	774.70	771.70	4
4	774.70	771.70	4
5	774.70	771.70	4
6	774.70	771.70	4
7	774.70	771.70	4
8	775.30	771.70	5
9	775.30	771.70	5
10	775.30	771.70	5
11	775.30	771.70	5
12	775.70	771.70	5
13	775.70	771.70	5
14	775.70	771.70	5
15	775.70	771.70	5
16	776.00	771.70	6
17	776.00	771.70	6
18	776.00	771.70	6
19	776.30	771.70	6
20	776.30	771.70	6
21	776.30	771.70	6
22	776.30	771.70	6
23	776.60	771.70	6
24	776.60	771.70	6
25	776.60	771.70	6
26	776.60	771.70	6
27	776.60	771.70	6
28	776.60	771.70	6
29	777.20	771.00	8
30	777.20	771.00	8
31	777.20	771.00	8
32	777.20	771.00	8
33	777.20	771.00	8
34	777.60	771.00	8
35	777.60	771.00	8
36	777.60	771.00	8
37	777.60	769.90	9
38	777.60	769.90	9
39	777.60	769.90	9
40	777.60	769.90	9
41	778.20	769.90	10
42	778.20	769.90	10
43	778.20	769.90	10
44	778.20	769.90	10
45	778.60	769.20	11
46	778.60	769.20	11
47	778.60	769.20	11
48	778.60	769.20	11
49	778.60	769.20	11
50	778.60	769.20	11
51	779.10	769.20	11
52	779.10	769.20	11
53	779.10	769.20	11

Pile No.	Top of Pile Elevation	Bottom of CIP Facing	Stud Shear Connectors
54	779.10	769.20	11
55	779.10	769.20	11
56	779.10	769.20	11
57	779.60	770.00	11
58	779.60	770.00	11
59	779.60	770.00	11
60	779.60	770.00	11
61	780.00	771.10	10
62	780.00	771.10	10
63	780.00	771.10	10
64	780.00	771.10	10
65	780.30	772.30	9
66	780.30	772.30	9
67	780.30	772.30	9
68	780.30	772.30	9
69	780.70	773.70	8
70	780.70	773.70	8
71	780.70	773.70	8
72	780.70	773.70	8
73	781.10	774.80	8
74	781.10	774.80	8
75	781.10	774.80	8
76	781.10	774.80	8
77	781.40	775.90	7
78	781.40	775.90	7
79	781.40	775.90	7
80	781.40	775.90	7
81	781.90	776.90	6
82	781.90	776.90	6
83	781.90	776.90	6
84	781.90	776.90	6
85	782.40	778.10	6
86	782.40	778.10	6
87	782.40	778.10	6
88	782.40	778.10	6
89	783.00	779.30	5
90	783.00	779.30	5
91	783.00	779.30	5
92	783.00	779.30	5
93	783.60	780.50	5
94	783.60	780.50	5
95	784.00	780.50	5
96	784.00	780.50	5
97	784.40	781.30	5
98	784.40	781.30	5
99	784.40	781.30	5
100	784.90	781.30	5
101	784.90	781.30	5
102	785.30	782.10	5
103	785.30	782.10	5
104	785.80	782.10	5
105	785.80	782.10	5

INDEX OF SHEETS

- WF1 General Plan and Elevation I
- WF2 General Plan and Elevation II
- WF3 General Data
- WF4 Retaining Wall I
- WF5 Retaining Wall II
- WF6 Retaining Wall III
- WF7 Retaining Wall IV
- WF8 Sheet Intentionally Left Blank
- WF9 Retaining Wall Details
- WF10 Anchorage Slabs
- WF11 Sheet Intentionally Left Blank
- WF12 Anchorage Slab Detail I
- WF13 Anchorage Slab Detail II
- WF14 Boring Logs I
- WF15 Boring Logs II

GENERAL NOTES

1. Reinforcement bars designated (E) shall be epoxy coated.

4/24/13 PM 4:24:53 PM J:\2154\cad\sheet\Roadway\20-Structures & Walls\Wall\0562505-60F72-03-CD_rev.dgn



DRAWN	- C. BRABAND
DESIGNED	- D. ATKINS
CHECKED	- G. HATLESTAD
DATE	- 5/3/2012

**STATE OF ILLINOIS
DEPARTMENT OF TRANSPORTATION**

**GENERAL DATA
WALL F: ILLINOIS ROUTE 31
STRUCTURE NO. 056-2505
SHEET NO. WF3 OF WF15 SHEETS**

O.R. RTE.	SECTION	COUNTY	TOTAL SHEETS	SHEET NO.
0003	18A-2	MCHENRY	825	622
				CONTRACT NO. 60F72
ILLINOIS FED. AID PROJECT				