

Bench Mark: Control Point 45, 5/8" Iron Rod with cap set, Huntington Drive Sta. 207+78.52, Offset 39.35 feet Rt., Elev. 814.95

Existing Structure: None

INDEX OF SHEETS

- WI1 General Plan and Elevation
- WI2 Retaining Wall
- WI3 Retaining Wall Details
- WI4 Aluminum Railing, Type L
- WI5 Boring Logs

CURVE DATA

$\Delta = 49^\circ 07' 32.59"$ (RT)
 $D = 9^\circ 57' 52.14"$
 $T = 262.80'$
 $L = 493.01'$
 $E = 57.21'$
 $R = 575.0'$
 P.C. = Sta. 211+21.76
 P.T. = Sta. 216+14.77
 P.I. = Sta. 213+84.56

DESIGN SPECIFICATIONS

2002 AASHTO Standard Specification for Highway Bridges, 17th Ed.

DESIGN STRESSES

FIELD UNITS

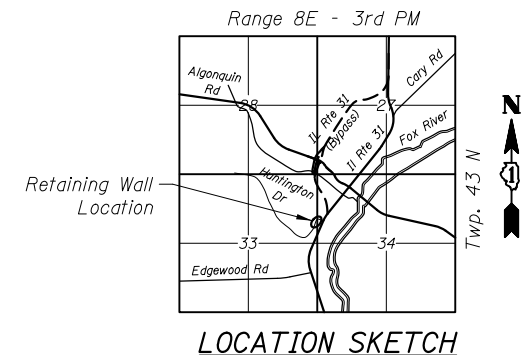
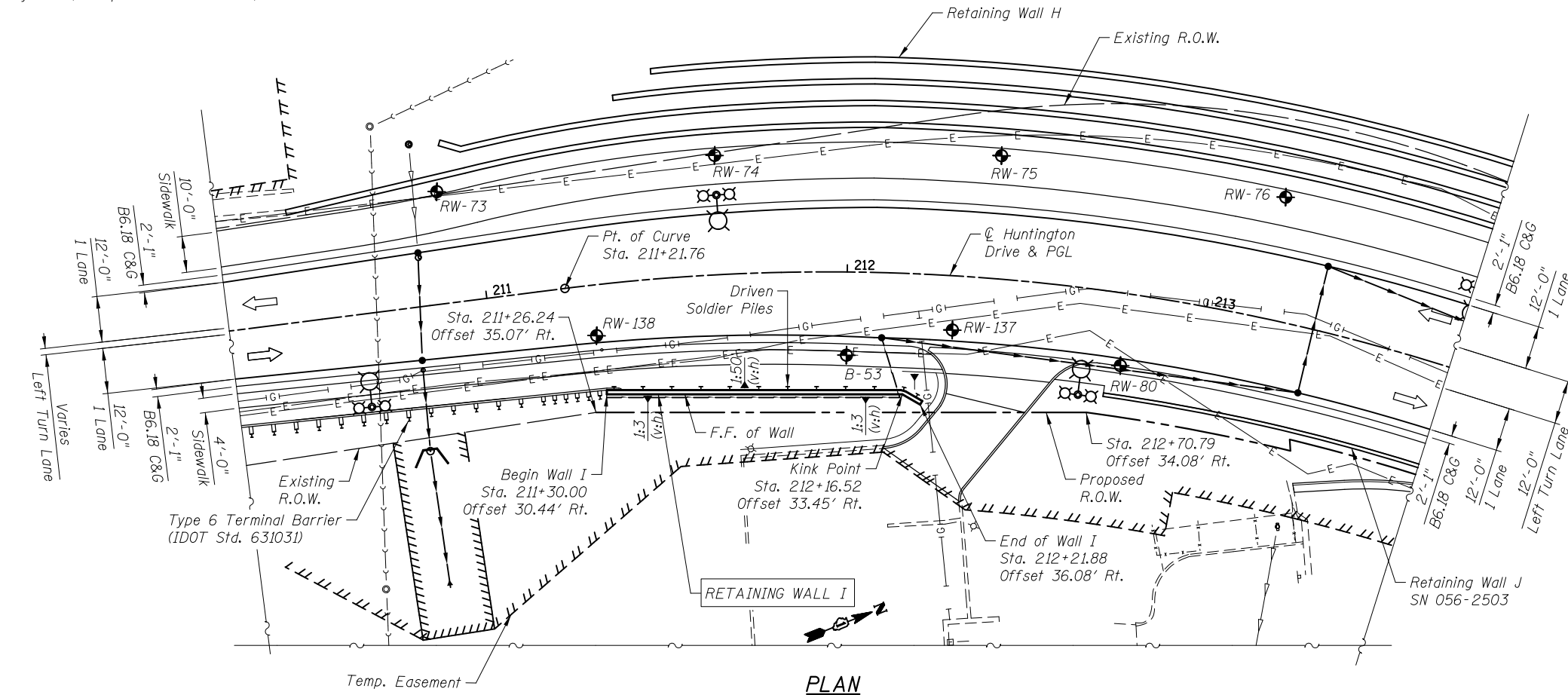
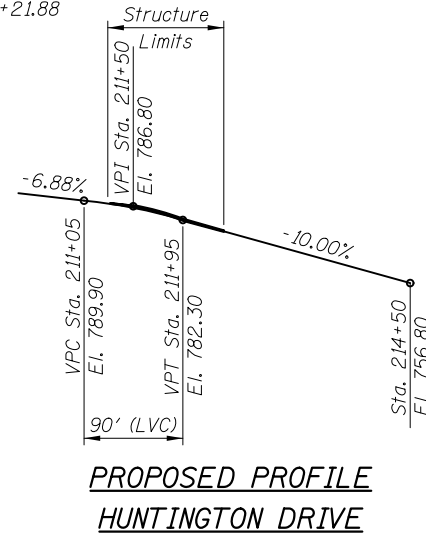
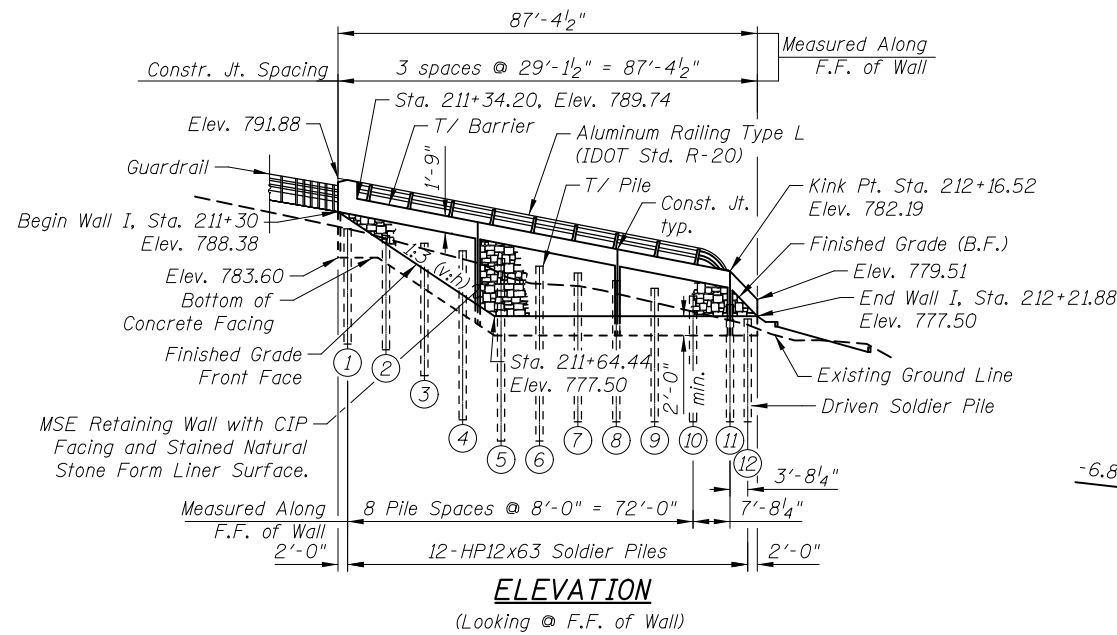
$f'_c = 3,500$ psi
 $f_y = 60,000$ psi (Reinforcement)
 $f_y = 36,000$ psi (M270 Grade 36, Soldier Piles)

TOP OF WALL & PILE ELEVATIONS

Pile No.	☉ Pile Station	☉ Pile Offset	Top of Barrier Elevation	Top of Pile Elevation	Bottom of Pile Elevation	Stud Shear Connectors
1	211+32.29	29.00	789.93	786.60	774.60	4
2	211+40.68	29.81	789.14	785.80	774.00	4
3	211+49.09	30.5	788.35	785.10	771.30	6
4	211+57.52	31.07	787.57	784.30	766.70	8
5	211+65.97	31.52	786.78	783.50	764.50	9
6	211+74.43	31.86	785.99	782.70	764.50	9
7	211+82.89	32.08	785.20	781.90	766.50	8
8	211+91.37	32.18	784.41	781.10	766.50	7
9	211+99.84	32.16	783.62	780.30	766.50	6
10	212+08.31	32.03	782.83	779.50	766.50	5
11	212+16.87	31.96	781.93	778.60	766.50	5
12	212+20.81	33.68	780.41	777.10	766.50	3

TOTAL BILL OF MATERIALS

ITEM	UNIT	TOTAL QUANTITY
Structure Excavation	Cu. Yd.	46
Concrete Structures	Cu. Yd.	32.1
Form Liner Textured Surface	Sq. Ft.	584
Stud Shear Connectors	Each	74
Reinforcement Bars, Epoxy Coated	Pound	2,090
Aluminum Railing, Type L	Foot	77
Geocomposite Wall Drain	Sq. Yd.	34
Driving Soldier Piles	Foot	172
Untreated Timber Lagging	Sq. Ft.	405
Furnishing Soldier Piles (HP Section)	Foot	172
Pipe Underdrains for Structures 4"	Foot	98
Staining Concrete Structures	Sq. Yd.	65



**GENERAL PLAN AND ELEVATION
 WALL I; HUNTINGTON DR.; O.R. 0003
 McHENRY COUNTY
 STA. 211+30 TO STA. 212+25**

4/26/2012 4:26:37 PM I:\2154\cad\sheet\Roadway\20-Structures & Walls\14-Wall\WI-60F72-01-CPE.dgn

CIVILTECH
 450 E Devon Ave, Suite 300
 Itasca, Illinois 60143
 Tel: 630.773.3900 Fax: 630.773.3975
 www.civiltechinc.com

DRAWN - M. LANGE
 DESIGNED - M. LANGE
 CHECKED - G. HATLESTAD
 DATE - 5/3/2012

**STATE OF ILLINOIS
 DEPARTMENT OF TRANSPORTATION**

**GENERAL PLAN AND ELEVATION
 WALL I; HUNTINGTON DRIVE**

SHEET NO. W11 OF W15 SHEETS

O.R. RTE.	SECTION	COUNTY	TOTAL SHEETS	SHEET NO.
0003	18A-2	MCHEMRY	825	645
CONTRACT NO. 60F72				
ILLINOIS FED. AID PROJECT				