

O.R. RTE.	SECTION	COUNTY	TOTAL SHEETS	SHEET NO.
0003	18A-2	MCHENRY	825	670
FED. ROAD DIST. NO. 1	ILLINOIS	CONTRACT NO. 60F72		

VOLUME IV

FOR INDEX OF SHEETS, SEE SHEET NO. 671

SUBSURFACE UTILITY ENGINEERING (S.U.E.)
UTILIZED ON THIS PROJECT

**PROJECT LOCATED IN THE
VILLAGE OF ALGONQUIN**

DESIGN DESIGNATION

34,000(30) OTHER PRINCIPAL ARTERIAL 6.03 (PCC-20)

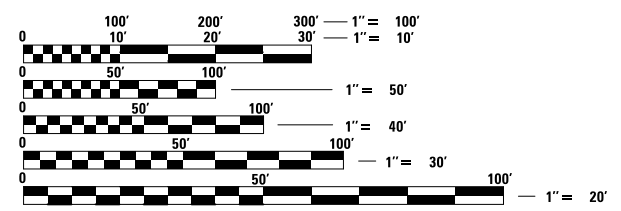
TRAFFIC DATA

	ADT (2030)	DESIGN SPEED	POSTED SPEED
IL ROUTE 31 (EDGEWOOD DRIVE TO HUNTINGTON DRIVE)	26,000	40 MPH	35 MPH
IL ROUTE 31 (HUNTINGTON DRIVE TO IL ROUTE 62)	16,000	40 MPH	40 MPH
IL ROUTE 31 (IL ROUTE 62 TO CARY-ALGONQUIN ROAD)	34,000	50 MPH	45 MPH
IL ROUTE 31 (CARY-ALGONQUIN ROAD TO KLASEN ROAD)	43,000	50 MPH	45 MPH
EDGEWOOD DRIVE	9,000	35 MPH	30 MPH
HUNTINGTON DRIVE	7,000	35 MPH	30 MPH
IL ROUTE 62 (EAST OF PROPOSED IL ROUTE 31)	48,000	35 MPH	30 MPH
IL ROUTE 62 (WEST OF PROPOSED IL ROUTE 31)	32,000	35 MPH	30 MPH

STATE OF ILLINOIS
DEPARTMENT OF TRANSPORTATION
DIVISION OF HIGHWAYS

**PROPOSED
HIGHWAY PLANS**

O.R. ROUTE 0003 (ALGONQUIN BYPASS)
SECTION 18A-2
ILLINOIS ROUTE 31 (N. JCT) TO ILLINOIS ROUTE 31 (S. JCT)
PROJECT NO.:
**NEW CONSTRUCTION, BRIDGE (NEW), RETAINING WALL
McHENRY COUNTY**

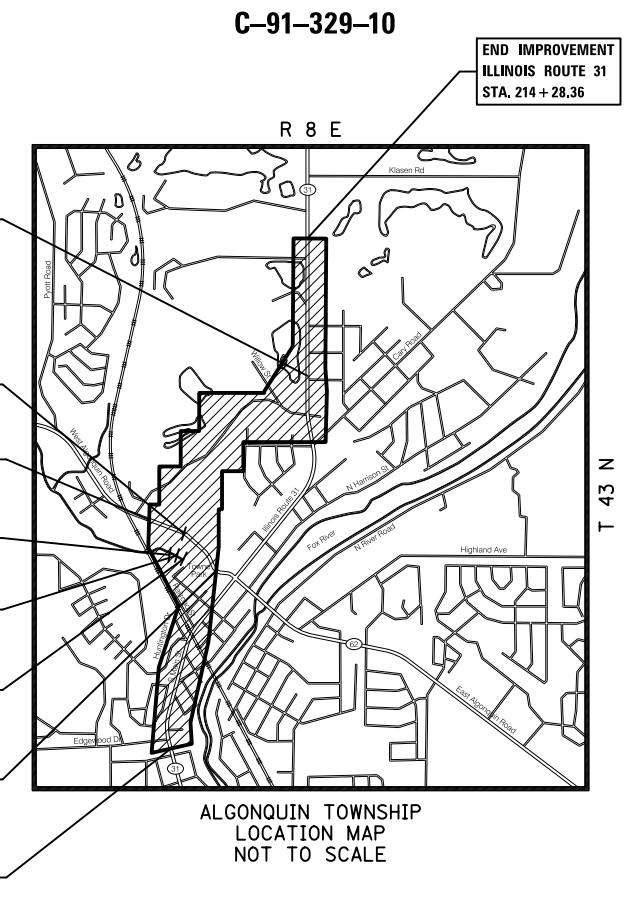


FULL SIZE PLANS HAVE BEEN PREPARED USING STANDARD ENGINEERING SCALES. REDUCED SIZED PLANS WILL NOT CONFORM TO STANDARD SCALES. IN MAKING MEASUREMENTS ON REDUCED PLANS, THE ABOVE SCALES MAY BE USED.

J.U.L.I.E.
JOINT UTILITY LOCATION INFORMATION FOR EXCAVATION
1-800-892-0123
OR 811

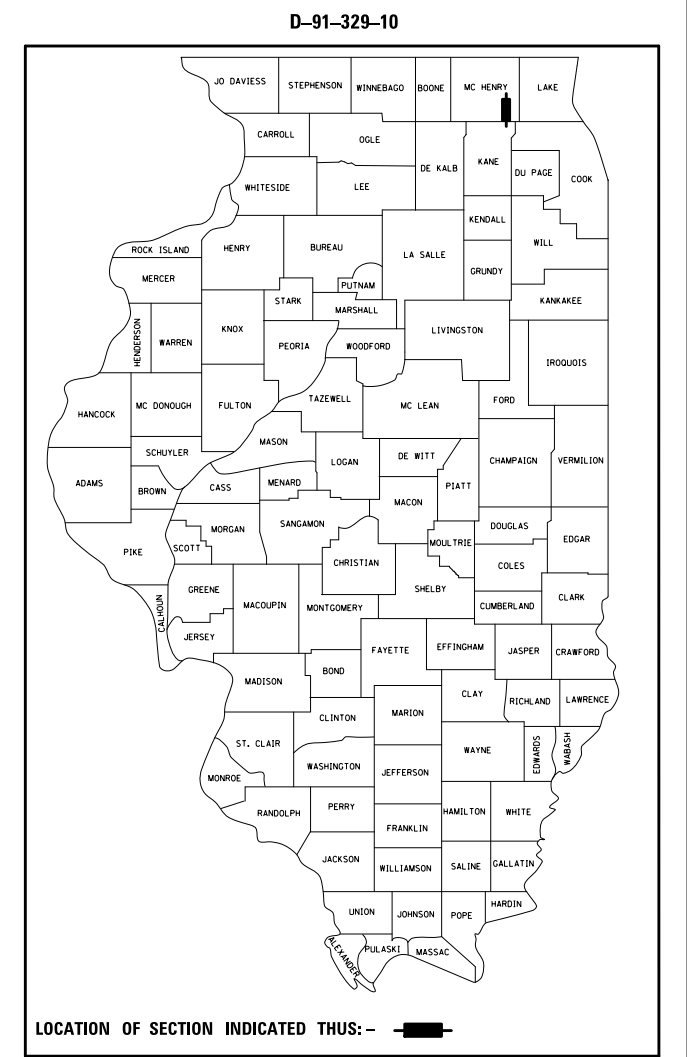
DISTRICT ONE - DESIGN
PROJECT MANAGER: ISAAC KWARTENG (847) 705-4230
PROJECT ENGINEER: ALIX BRICE (847) 705-4552

CONTRACT NO. 60F72



GROSS LENGTH = 11,153.55 FT. = 2.112 MILES
NET LENGTH = 11,153.55 FT. = 2.112 MILES

PLANS PREPARED BY:
CIVILTECH
450 E. Devon Ave, Suite 300 - Itasca, Illinois 60143
Tel: 630.773.3900 - Fax: 630.773.3975
www.civiltechinc.com



LOCATION OF SECTION INDICATED THIS: - [black rectangle] -

STATE OF ILLINOIS
DEPARTMENT OF TRANSPORTATION
DIVISION OF HIGHWAYS

SUBMITTED _____ 20 _____
DEPUTY DIRECTOR OF HIGHWAYS, REGION ENGINEER

_____ 20 _____
ENGINEER OF DESIGN AND ENVIRONMENT

_____ 20 _____
DIRECTOR OF HIGHWAYS, CHIEF ENGINEER

**PRINTED BY THE AUTHORITY
OF THE STATE OF ILLINOIS**