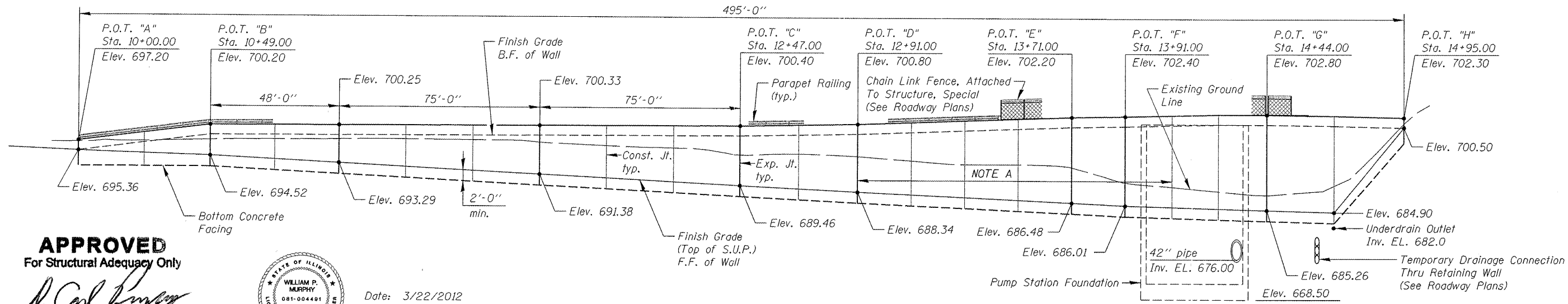


Bench Mark: BM #208 3955+33, 51 LT
 Square "□" cut in southeast corner of high tension tower base, west side of IL Route 59,
 in front of Sprint / Back To Bed store (#1076 IL Route 59) Elev. 702.94

Existing Structure: None.

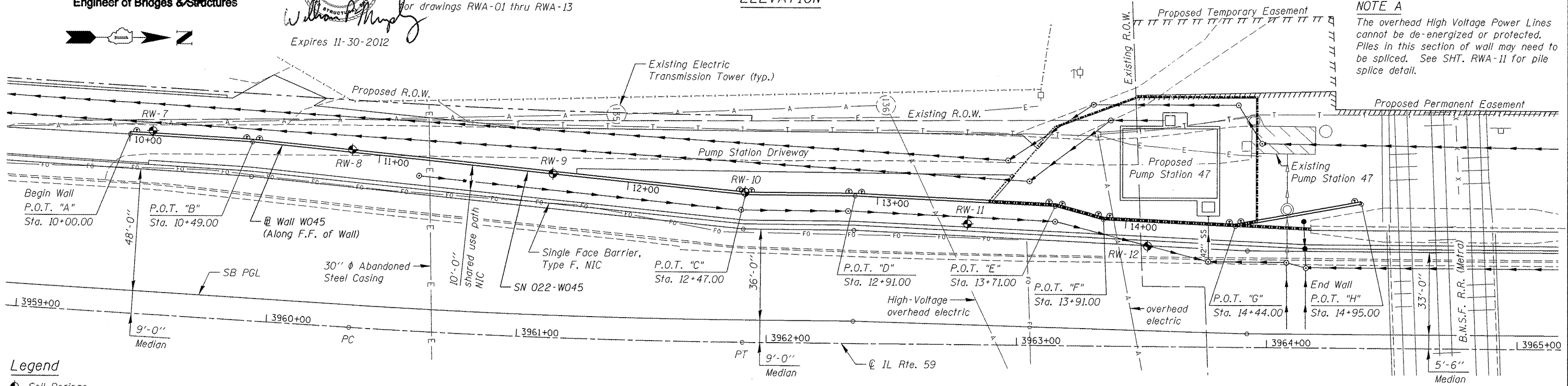


APPROVED
 For Structural Adequacy Only
 [Signature]
 Engineer of Bridges & Structures



Date: 3/22/2012
 for drawings RWA-01 thru RWA-13
 Expires 11-30-2012

ELEVATION



Legend

- ◆ Soil Borings
- F.F. Front Face
- B.F. Back Face
- NIC Not In Contract
- S.U.P. Shared Use Path

CURVE DATA

IL Rte. 59
 Curve PRIL59-2
 $\Delta = 3^\circ 02' 50''$ (LT)
 $D = 1^\circ 56' 16''$
 $R = 2,956.67'$
 $T = 78.64'$
 $L = 157.25'$
 $E = 1.05'$
 $SE = \text{Normal Crown}$
 $PC \text{ STA. } 3960+33.13$
 $PT \text{ STA. } 3961+90.37$
 $PI \text{ STA. } 3961+11.77$

Wall W045
 (Offsets from IL Rte. 59 to F.F. of wall)
 POT "A"
 Sta. 10+00.00 - Wall W045 =
 Sta. 3959+41.00, 70.60' Lt. - IL Rte. 59
 POT "B"
 Sta. 10+49.00 - Wall W045 =
 Sta. 3959+90.00, 70.60' Lt. - IL Rte. 59
 POT "C"
 Sta. 12+47.00 - Wall W045 =
 Sta. 3961+91.03, 58.60' Lt. - IL Rte. 59
 POT "D"
 Sta. 12+91.00 - Wall W045 =
 Sta. 3962+35.03, 58.60' Lt. - IL Rte. 59

POT "E"
 Sta. 13+71.00 - Wall W045 =
 Sta. 3963+14.97, 55.30' Lt. - IL Rte. 59
 POT "F"
 Sta. 13+91.00 - Wall W045 =
 Sta. 3963+34.31, 50.20' Lt. - IL Rte. 59
 POT "G"
 Sta. 14+44.00 - Wall W045 =
 Sta. 3963+87.27, 48.00' Lt. - IL Rte. 59
 POT "H"
 Sta. 14+95.00 - Wall W045 =
 Sta. 3964+37.42, 57.30' Lt. - IL Rte. 59

Notes:

- SN 022-W045 will be built in conjunction with the Proposed Pump Station 47.
- Retaining wall piles near the pump station will be used as part of the Braced Excavation for the pump station.
- Remainder of the wall near the pump station will be constructed after the pump station foundation is constructed and backfilled.
- See Roadway Drainage Plans for Drainage Structure Locations.
- See Roadway Plans for Back Face of Wall Elevations and Chain Link Fence details.

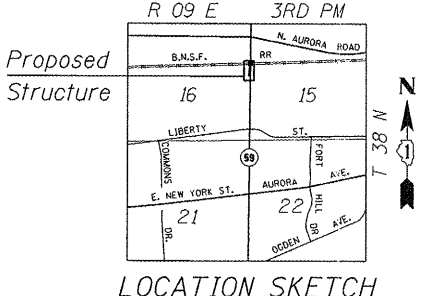
DESIGN SPECIFICATIONS

2002 AASHTO Standard Specifications for Highway Bridges, 17th Edition

DESIGN STRESSES

FIELD UNITS

$f'_c = 3,500 \text{ psi}$
 $f_y = 60,000 \text{ psi (reinforcement)}$
 $f_y = 50,000 \text{ psi (AASHTO M270 Gr. 50)}$



LOCATION SKETCH

GENERAL PLAN & ELEVATION
ILLINOIS ROUTE 59
 F.A.P. RTE. 338 SEC. 2011-035-1
 DUPAGE COUNTY
 STATION 3959+41 TO 3964+38
 STRUCTURE NO. 022-W045

KNIGHT
 Engineers & Architects

DESIGNED - TB	REVISIONS
CHECKED - WPM	REVISIONS
DRAWN - TB	REVISIONS
DATE - 3/22/2012	REVISIONS

STATE OF ILLINOIS
DEPARTMENT OF TRANSPORTATION

GENERAL PLAN & ELEVATION
STRUCTURE NUMBER 022-W045
 SHEET NO. RWA-01 OF 13 SHEETS

F.A.P. RTE.	SECTION	COUNTY	TOTAL SHEETS	SHEET NO.
338/IL 59	2011-035-1	DUPAGE	181	51
CONTRACT NO. 60P41				

ILLINOIS FED. AID PROJECT