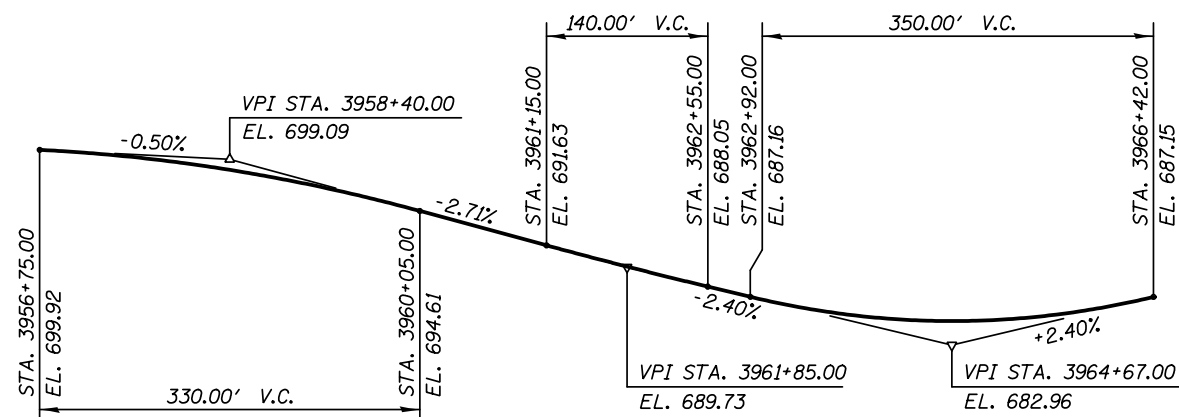


TYPICAL WALL SECTION
(For Details See Shf. RWA-08)



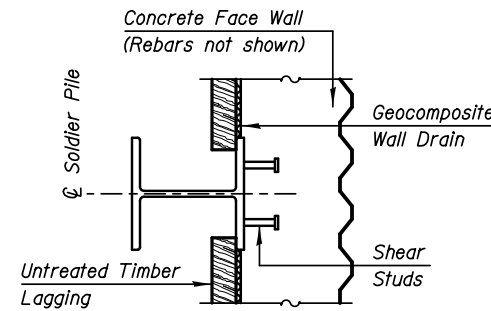
PROFILE GRADE - IL RTE. 59

GENERAL NOTES

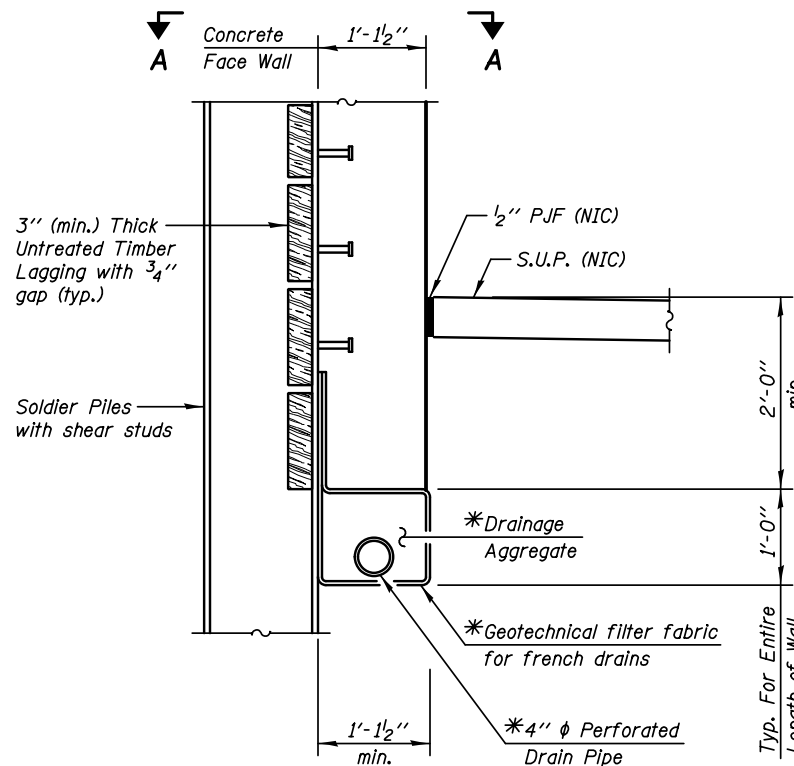
All structural steel shall conform to the requirements of AASHTO M 270 Grade 50 except as noted on plans.

Reinforcement bars designated (E) shall be epoxy coated.

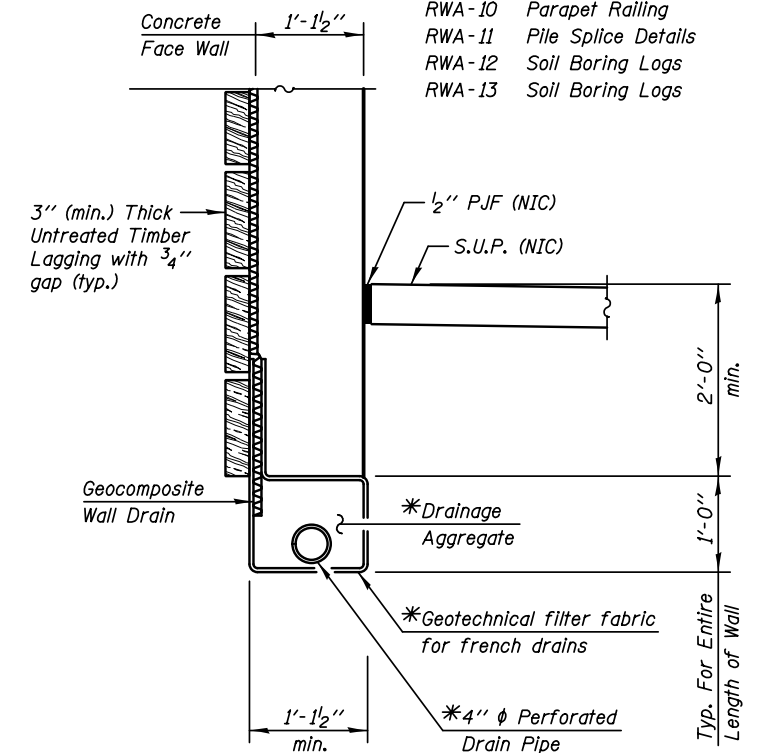
The Contractor is responsible for the design and performance of the timber lagging using no less than a 3 in. nominal rough-sawn thickness and timber with a minimum allowable bending stress of 1000 psi.



SECTION A-A - PLAN



DETAIL A
(At Soldier Piles)



DETAIL B
(Between Soldier Piles)

UNDERDRAIN DETAIL

*Cost Included with "Pipe Underdrains for Structures"

LEGEND

NIC Not In Contract
S.U.P. Shared Use Path

TOTAL BILL OF MATERIAL

ITEM	UNIT	TOTAL
Structure Excavation	Cu. Yd.	416.0
Concrete Structures	Cu. Yd.	283.0
Form Liner Textured Surface	Sq. Ft.	4263.0
Protective Coat	Sq. Yd.	611.0
Stud Shear Connectors	Each	1548
Reinforcement Bars, Epoxy Coated	Pound	25810
Parapet Railing	Foot	344.0
Geocomposite Wall Drain	Sq. Yd.	543.0
Drilling And Setting Soldier Piles (In Soil)	Cu. Ft.	22830.0
Untreated Timber Lagging	Sq. Ft.	4881.0
Furnishing Soldier Piles (HP Section)	Foot	828.0
Furnishing Soldier Piles (W Section)	Foot	3041.0
Pipe Underdrains for Structures 4"	Foot	495.0

INDEX OF DRAWINGS

SHT NO.	TITLE
RWA-01	General Plan and Elevation
RWA-02	Total Bill of Material & Miscellaneous Details
RWA-03	Wall Details For Pump Station Excavation
RWA-04	Plan & Elevation - Panels A, B & C
RWA-05	Plan & Elevation - Panels D & E
RWA-06	Plan & Elevation - Panels F & G
RWA-07	Plan & Elevation - Panels H & J
RWA-08	Wall Sections and Details
RWA-09	Architectural Finish and Joint Details
RWA-10	Parapet Railing
RWA-11	Pile Splice Details
RWA-12	Soil Boring Logs
RWA-13	Soil Boring Logs