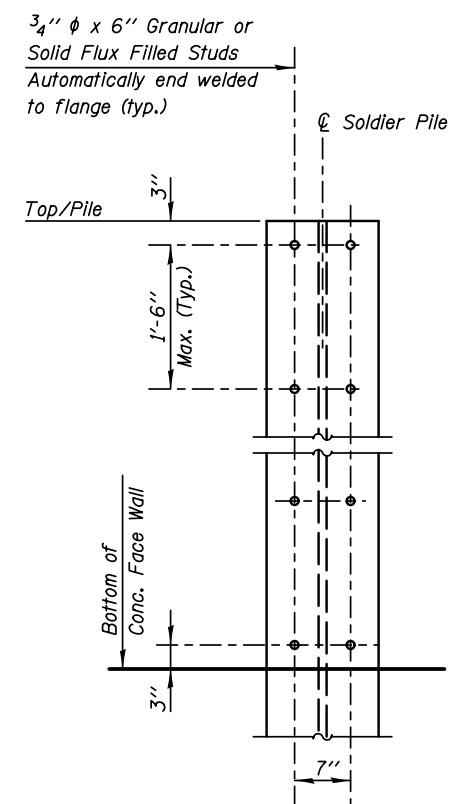
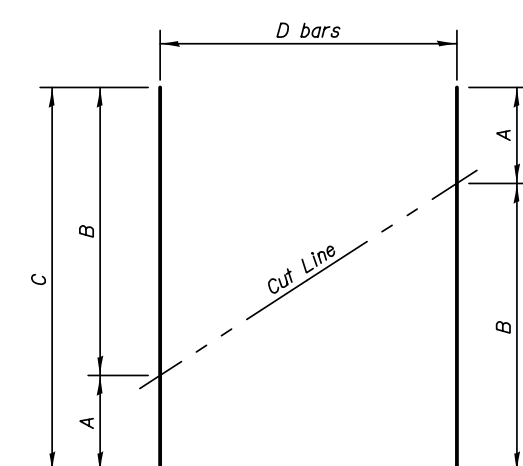


BILL OF MATERIAL

BAR	NO.	SIZE	LENGTH	SHAPE
d(E)	120	#4	2'-3"	□
h(E)	380	#5	6'-0"	—
h1(E)	32	#5	24'-2"	—
h2(E)	38	#5	23'-8"	—
h3(E)	68	#5	24'-8"	—
h10(E)	80	#5	24'-8"	—
h11(E)	60	#5	21'-8"	—
h20(E)	178	#5	19'-8"	—
h30(E)	80	#5	17'-8"	—
h31(E)	40	#5	16'-8"	—
h32(E)	42	#5	24'-8"	—
h33(E)	10	#5	25'-8"	—
h34(E)	12	#5	29'-8"	—
h35(E)	2	#5	29'-3"	—
v(E)	25	#4	10'-4"	—
v1(E)	25	#4	13'-4"	—
v2(E)	25	#4	15'-5"	—
v3(E)	25	#4	16'-8"	—
v4(E)	26	#4	18'-0"	—
v5(E)	26	#4	19'-4"	—
v6(E)	26	#4	20'-8"	—
v10(E)	26	#4	22'-0"	—
v11(E)	26	#4	23'-4"	—
v12(E)	26	#4	24'-8"	—
v13(E)	23	#4	26'-1"	—
v14(E)	23	#4	27'-7"	—
v20(E)	21	#4	29'-2"	—
v21(E)	21	#4	30'-9"	—
v22(E)	21	#4	32'-4"	—
v23(E)	21	#4	34'-0"	—
v24(E)	21	#4	35'-6"	—
v30(E)	38	#4	18'-1"	—
v31(E)	18	#4	37'-6"	—
v32(E)	38	#4	19'-0"	—
v33(E)	52	#4	19'-3"	—
v34(E)	27	#4	23'-10"	—
Structure Excavation			Cu. Yd.	416.0
Concrete Structures			Cu. Yd.	283.0
Form Liner Textured Surface			Sq. Ft.	4263.0
Protective Coat			Sq. Yd.	611.0
Stud Shear Connectors			Each	1548
Reinforcement Bars, Epoxy Coated			Pound	25810
Drilling and Setting Soldier Piles (In Soil)			Cu. Ft.	22830.0
Furnishing Soldier Piles (HP12x53)			Foot	359.0
Furnishing Soldier Piles (HP14x73)			Foot	469.0
Furnishing Soldier Piles (W24x68)			Foot	561.0
Furnishing Soldier Piles (W24x104)			Foot	319.0
Furnishing Soldier Piles (W24x131)			Foot	734.0
Furnishing Soldier Piles (W24x146)			Foot	1427.0

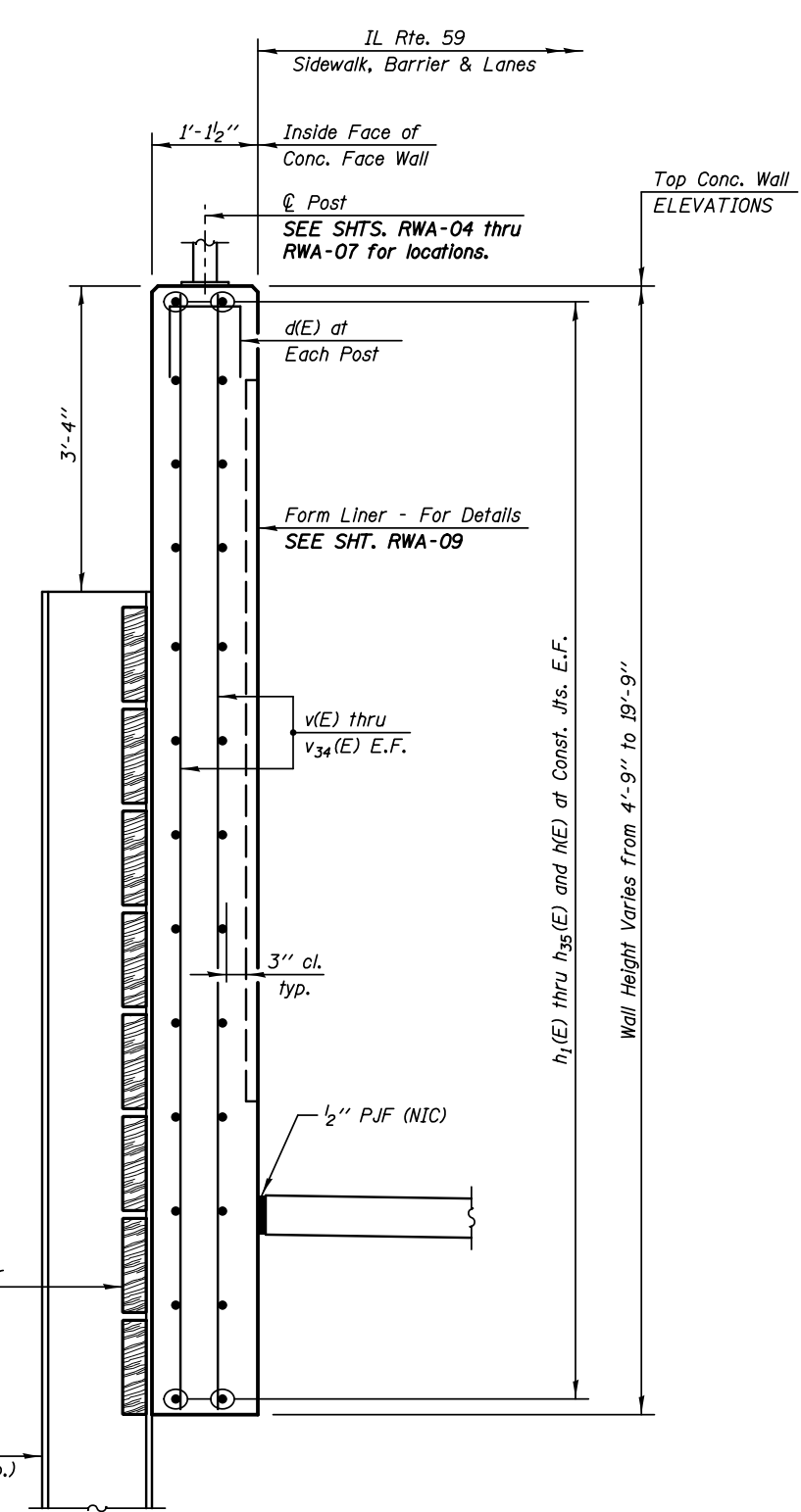
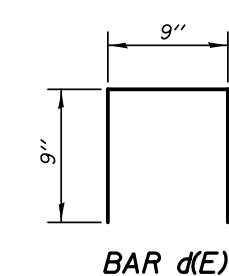


STUD SHEAR CONNECTORS LAYOUT



BAR CUTTING DIAGRAM
Order bars full length. Cut as shown and use remainder of bars in opposite face.

BAR	A	B	C	D
v(E)	4'-5"	5'-11"	10'-4"	25
v1(E)	5'-11"	7'-5"	13'-4"	25
v2(E)	7'-5"	8'-0"	15'-5"	25
v3(E)	8'-0"	8'-8"	16'-8"	25
v4(E)	8'-8"	9'-4"	18'-0"	26
v5(E)	9'-4"	10'-0"	19'-4"	26
v6(E)	10'-0"	10'-8"	20'-8"	26
v10(E)	10'-8"	11'-4"	22'-0"	26
v11(E)	11'-4"	12'-0"	23'-4"	26
v12(E)	12'-0"	12'-8"	24'-8"	26
v13(E)	12'-8"	13'-5"	26'-1"	23
v14(E)	13'-5"	14'-2"	27'-7"	23
v20(E)	14'-2"	15'-0"	29'-2"	21
v21(E)	15'-0"	15'-9"	30'-9"	21
v22(E)	15'-9"	16'-7"	32'-4"	21
v23(E)	16'-7"	17'-5"	34'-0"	21
v24(E)	17'-5"	18'-1"	35'-6"	21
v31(E)	18'-6"	19'-0"	37'-6"	18
v34(E)	19'-5"	4'-5"	23'-10"	27
h34(E)	25'-8"	4'-0"	29'-8"	12



TYPICAL WALL SECTION

LEGEND:
E.F. Each Face
NIC Not In Contract