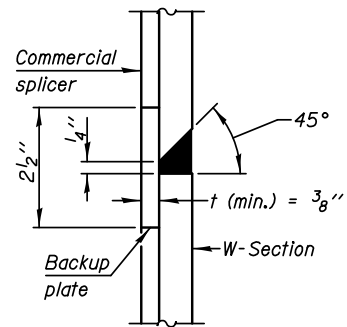
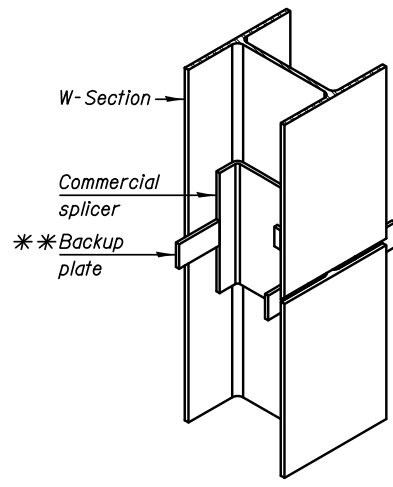


**ELEVATION**

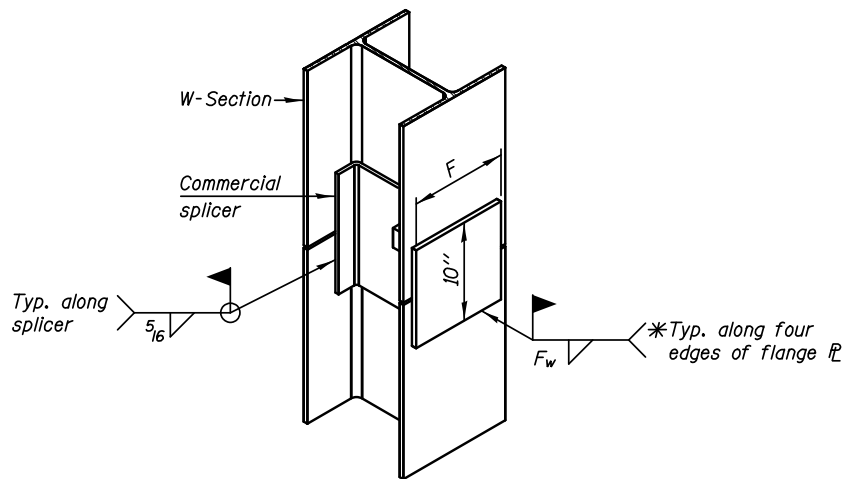


**DETAIL B**



**ISOMETRIC VIEW**

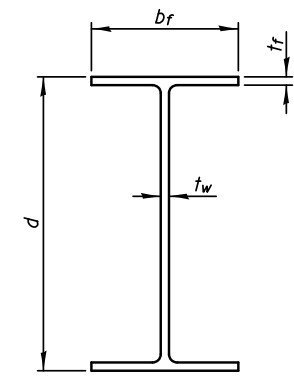
**WELDED COMMERCIAL SPLICE**



**ISOMETRIC VIEW**

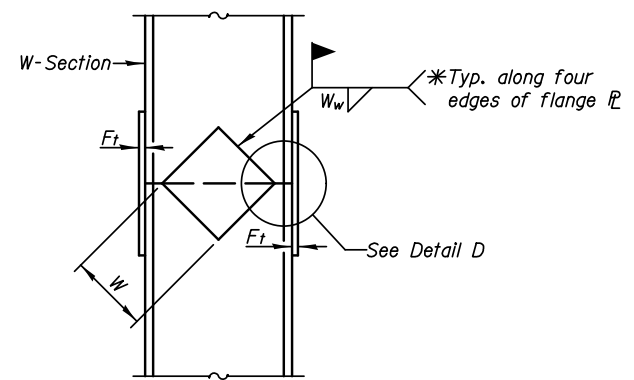
**WELDED COMMERCIAL SPLICE ALTERNATE**

- \* Interrupt welds 1/4" from end of web and/or each flange.
- \*\* Remove portions of backup plates that extend outside the flanges.
- \*\*\* Weld size per pile shoe manufacturer (5/16" min.).

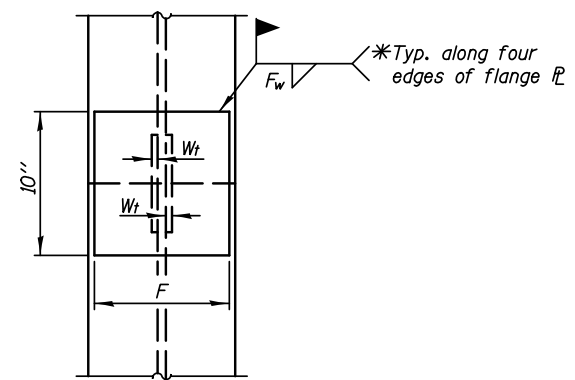


**STEEL PILE**

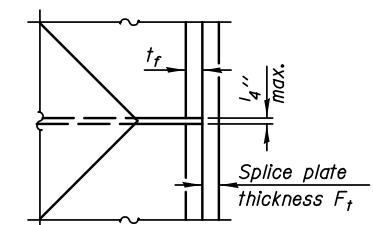
Designation	Depth d	Flange width b <sub>f</sub>	Flange thickness t <sub>f</sub>	Web thickness t <sub>w</sub>	Encasement diameter A
W24x131	24 1/2"	12 7/8"	1 5/16"	5/16"	36"
x146	24 3/4"	12 7/8"	1 1/16"	5/16"	36"



**ELEVATION**



**END VIEW**



**DETAIL D**

Designation	F	F <sub>t</sub>	F <sub>w</sub>	W	W <sub>t</sub>	W <sub>w</sub>
W24x131	11"	1 1/4"	1 1/8"	15"	1/2"	3/8"
x146	11"	1 3/8"	1 1/4"	15"	1/2"	3/8"

**WELDED PLATE FIELD SPLICE**

**Notes:**  
The steel W-Section shall be according to AASHTO M270 Grade 50.