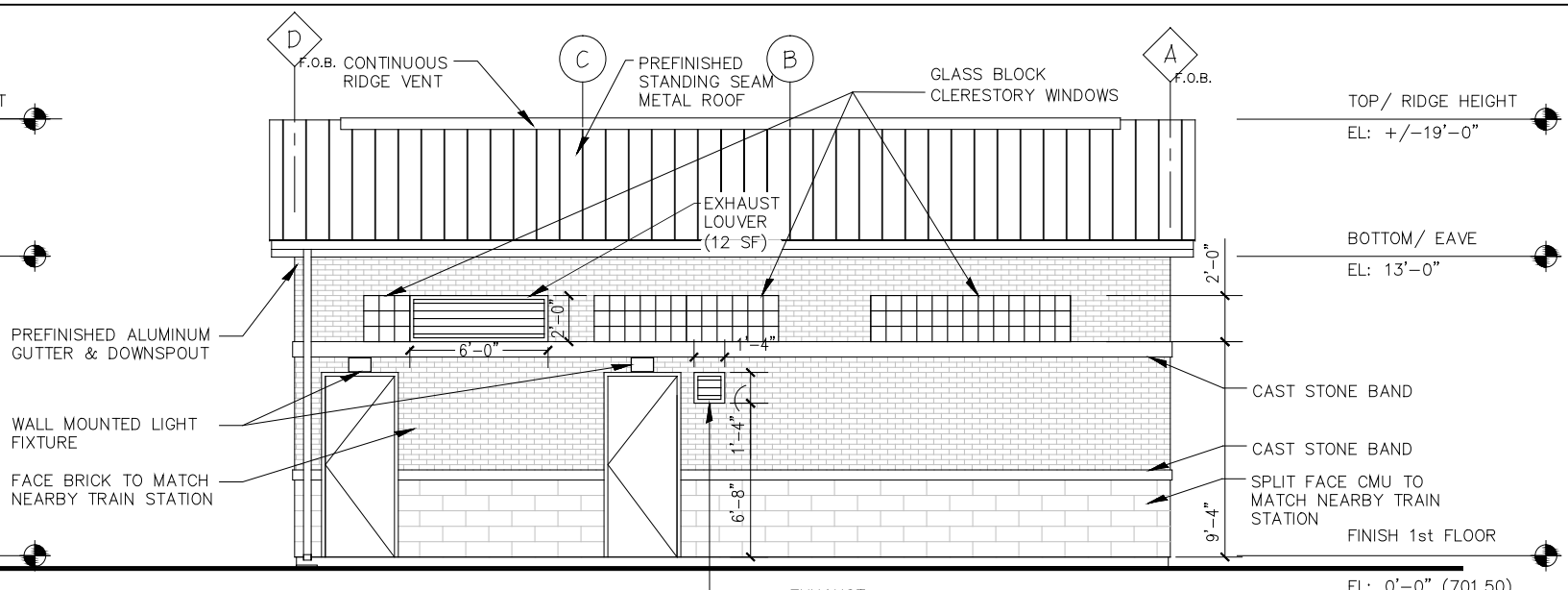
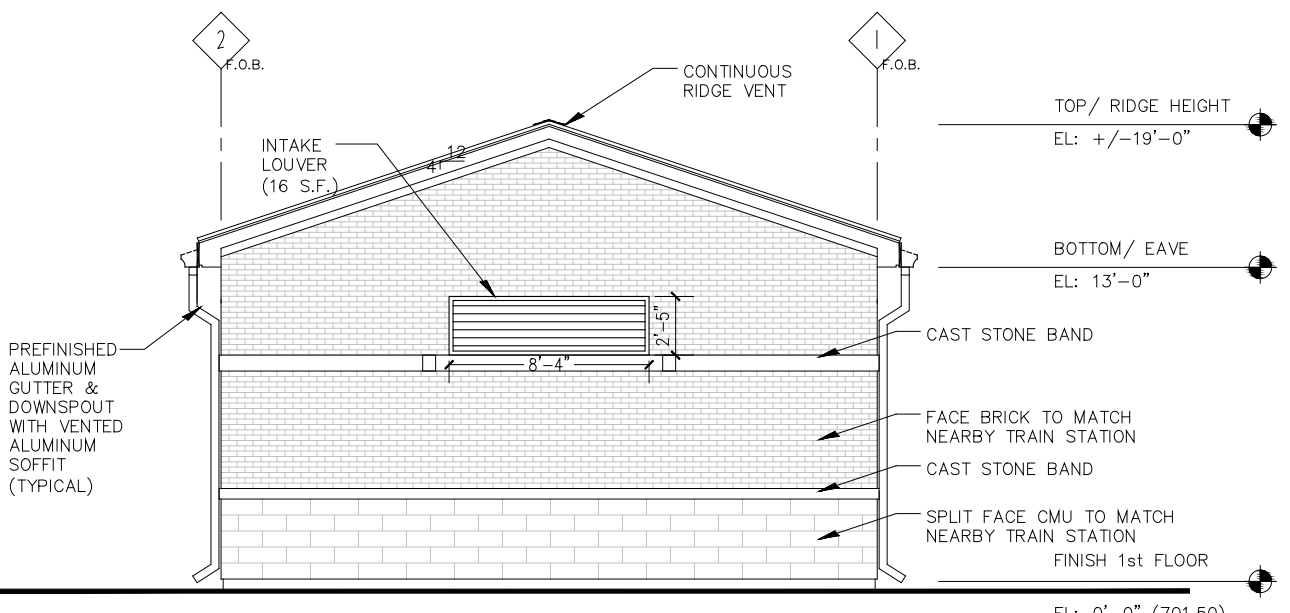


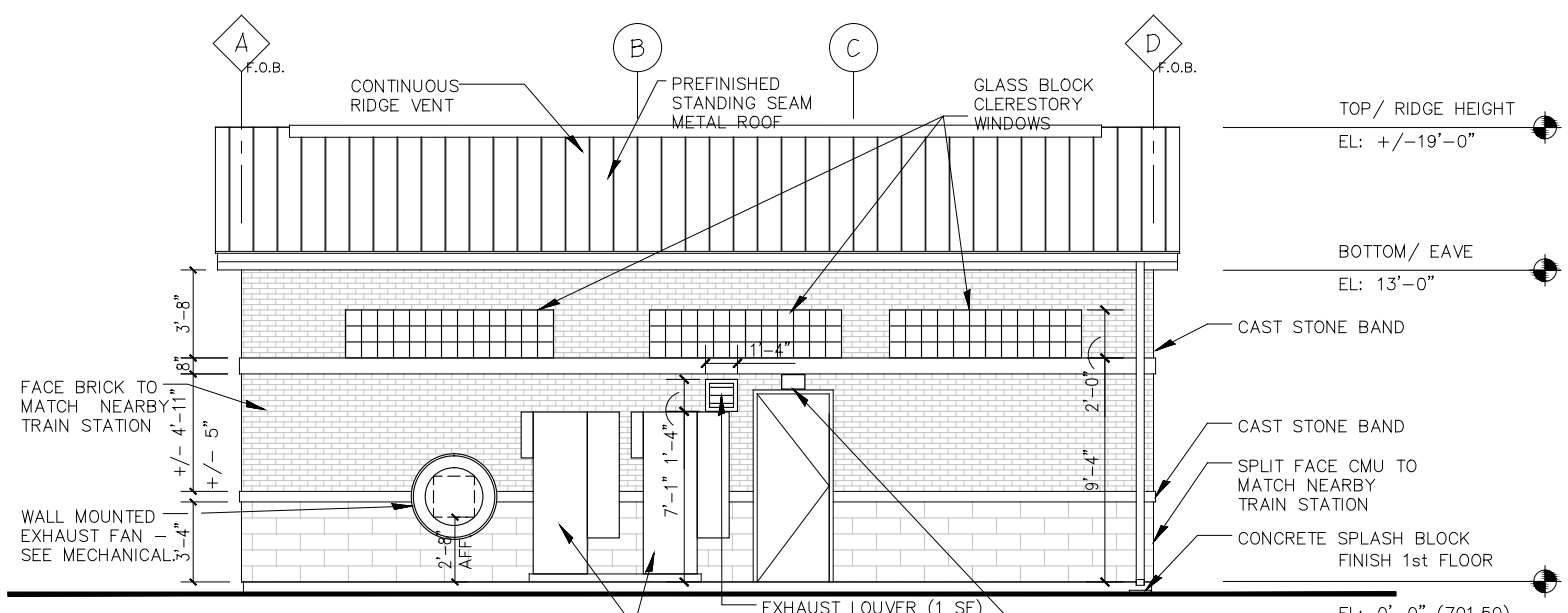
1 SOUTH ELEVATION
SCALE: 1/4" = 1'-0"



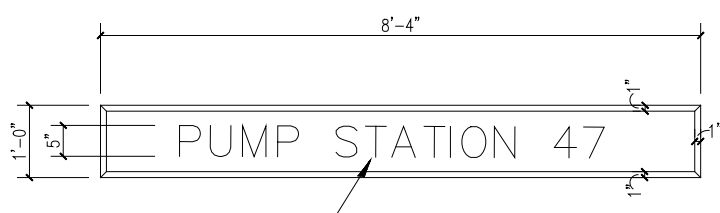
2 WEST ELEVATION
SCALE: 1/4" = 1'-0"



3 NORTH ELEVATION
SCALE: 1/4" = 1'-0"

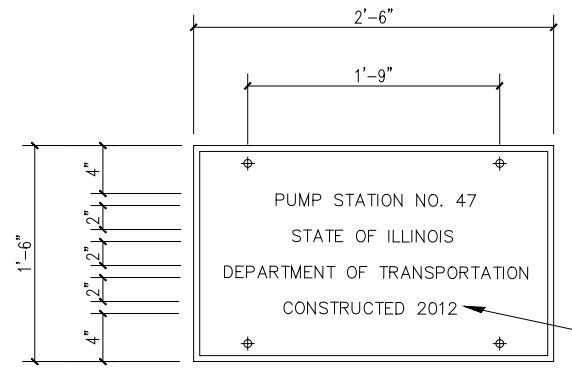


4 EAST ELEVATION
SCALE: 1/4" = 1'-0"



CAST STONE SIGNAGE PANEL WITH ENGRAVED LETTERS AND NUMBERS CONFIRM FONT WITH OWNER PRIOR TO FABRICATION.

5 CAST STONE SIGNAGE
SCALE: 3/4" = 1'-0"



NOTE: VERIFY MOUNTING LOCATION AND HEIGHT WITH THE OWNER.

COORDINATE FINAL YEAR WITH THE OWNER

6 STATION IDENTIFICATION PLATE
SCALE: 1 1/2" = 1'-0"

NOTE: COORDINATE ALL MECHANICAL LOUVER DIMENSIONS W/ MECHANICAL PLANS. DECORATIVE LOUVERS WILL NOT ALWAYS MATCH FUNCTIONAL LOUVER. CONFIRM THAT FREE AREA REQUIREMENTS ARE BEING MET.

