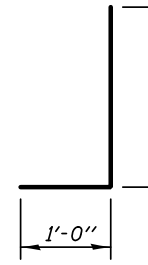


BILL OF MATERIAL

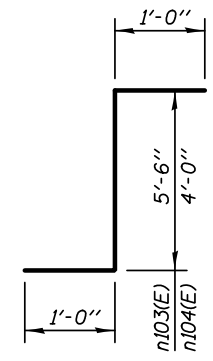
BAR	NO.	SIZE	LENGTH	SHAPE
n100(E)	302	#6	20'-0"	└─┘
n101(E)	12	#6	7'-0"	└─┘
n102(E)	39	#6	21'-6"	└─┘
n103(E)	4	#6	7'-6"	└─┘
n104(E)	9	#6	6'-0"	└─┘
t100(E)	60	#9	18'-8"	▬
t101(E)	2	#9	14'-8"	▬
t102(E)	2	#9	1'-8"	▬
t103(E)	52	#8	27'-0"	▬
t104(E)	10	#8	17'-2"	▬
t105(E)	12	#8	8'-8"	▬
t106(E)	10	#6	11'-2"	▬
w100(E)	38	#9	29'-0"	▬
w101(E)	2	#9	25'-0"	▬
w102(E)	2	#9	1'-8"	▬
w103(E)	36	#8	29'-0"	▬
w104(E)	6	#8	22'-1"	▬
w105(E)	6	#8	1'-8"	▬
w106(E)	20	#8	14'-0"	▬
w107(E)	12	#6	8'-7"	▬
Reinforcement Bars, Epoxy Coated			LB	27160

A DIMENSIONS

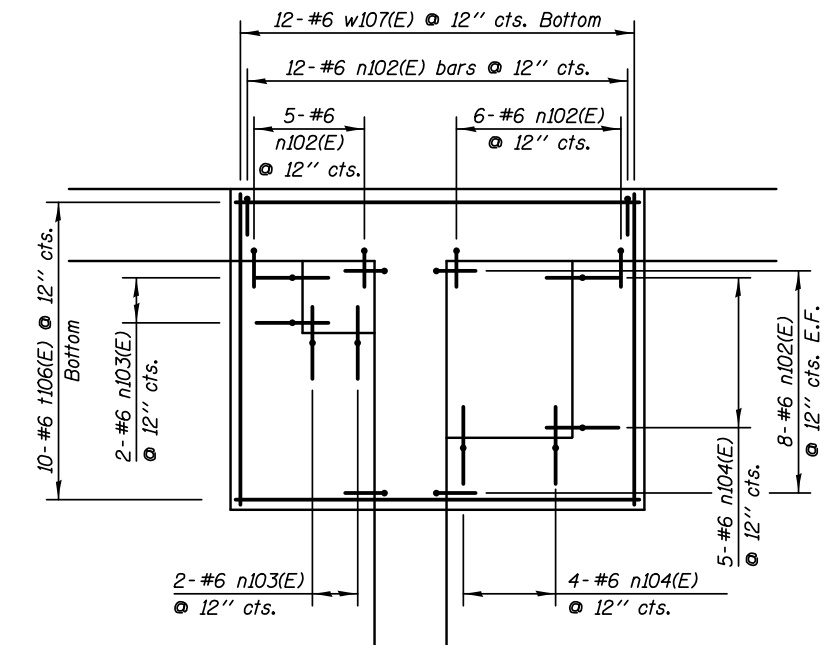
BAR	A
n100(E)	19'-0"
n101(E)	6'-0"
n102(E)	20'-6"



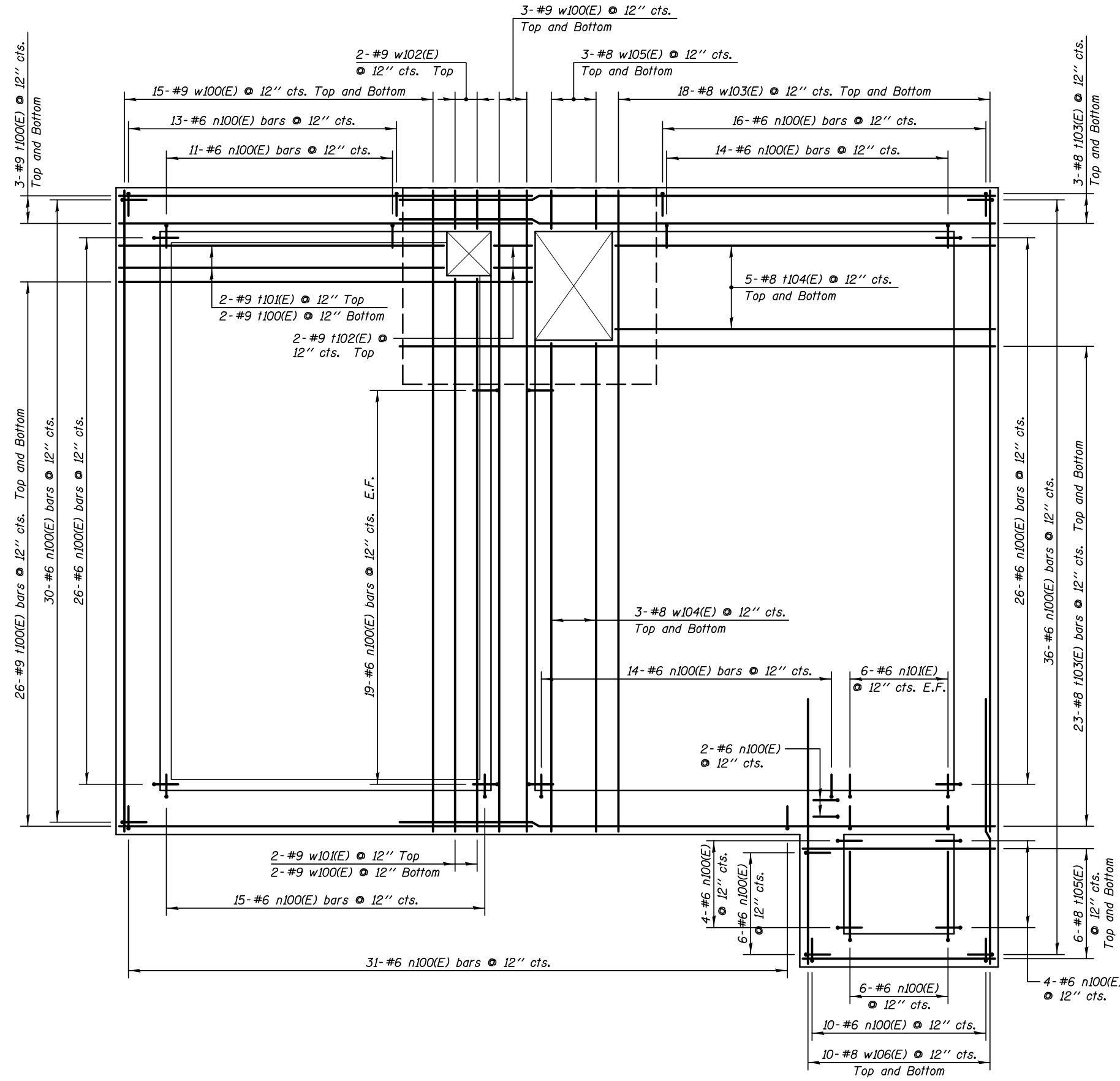
BARS n100(E), n101(E) & n102(E)



BARS n103(E) & n104(E)



REINFORCEMENT PARTIAL PLAN - EL. 668.50



REINFORCEMENT PLAN - EL 673.00 / 671.50

KNIGHT
Engineers & Architects

SCALE - NONE
DATE - 3/22/2012

DESIGNED - WPM
CHECKED - TB
DRAWN - TB
CHECKED - WPM

REVISED -
REVISED -
REVISED -
REVISED -

**STATE OF ILLINOIS
DEPARTMENT OF TRANSPORTATION**

**REINFORCEMENT DETAILS - FLOOR SLAB EL 673.00 / 671.50
PUMP STATION 47**

SHEET NO. SA-14 OF 34 SHEETS

F.A.P. RTE.	SECTION	COUNTY	TOTAL SHEETS	SHEET NO.
338/IL 59	2011-035-I	DUPAGE	181	89
CONTRACT NO. 60P41			ILLINOIS FED. AID PROJECT	