

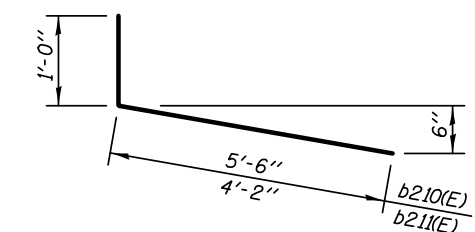
BILL OF MATERIAL

BAR	NO.	SIZE	LENGTH	SHAPE
a200(E)	8	#4	11'-2"	└
a201(E)	8	#4	10'-2"	▬
a202(E)	10	#4	18'-6"	▬
a203(E)	8	#4	6'-8"	└
a204(E)	8	#4	5'-8"	└
a205(E)	8	#4	27'-0"	▬
a206(E)	8	#4	26'-0"	▬
a207(E)	3	#4	22'-0"	└
a208(E)	3	#4	21'-0"	└
a209(E)	4	#4	8'-0"	└
a210(E)	4	#4	7'-0"	▬
a211(E)	12	#4	2'-0"	▬
a212(E)	5	#4	25'-0"	▬
b200(E)	14	#4	9'-8"	└
b201(E)	14	#4	8'-8"	▬
b202(E)	32	#4	3'-8"	▬
b203(E)	23	#4	10'-8"	└
b204(E)	23	#4	9'-8"	└
b205(E)	2	#4	2'-8"	▬
b210(E)	19	#4	6'-6"	└
b211(E)	8	#4	5'-2"	└
d200(E)	29	#4	2'-0"	▬
Reinforcement Bars, Epoxy Coated			LB	1530

A DIMENSIONS

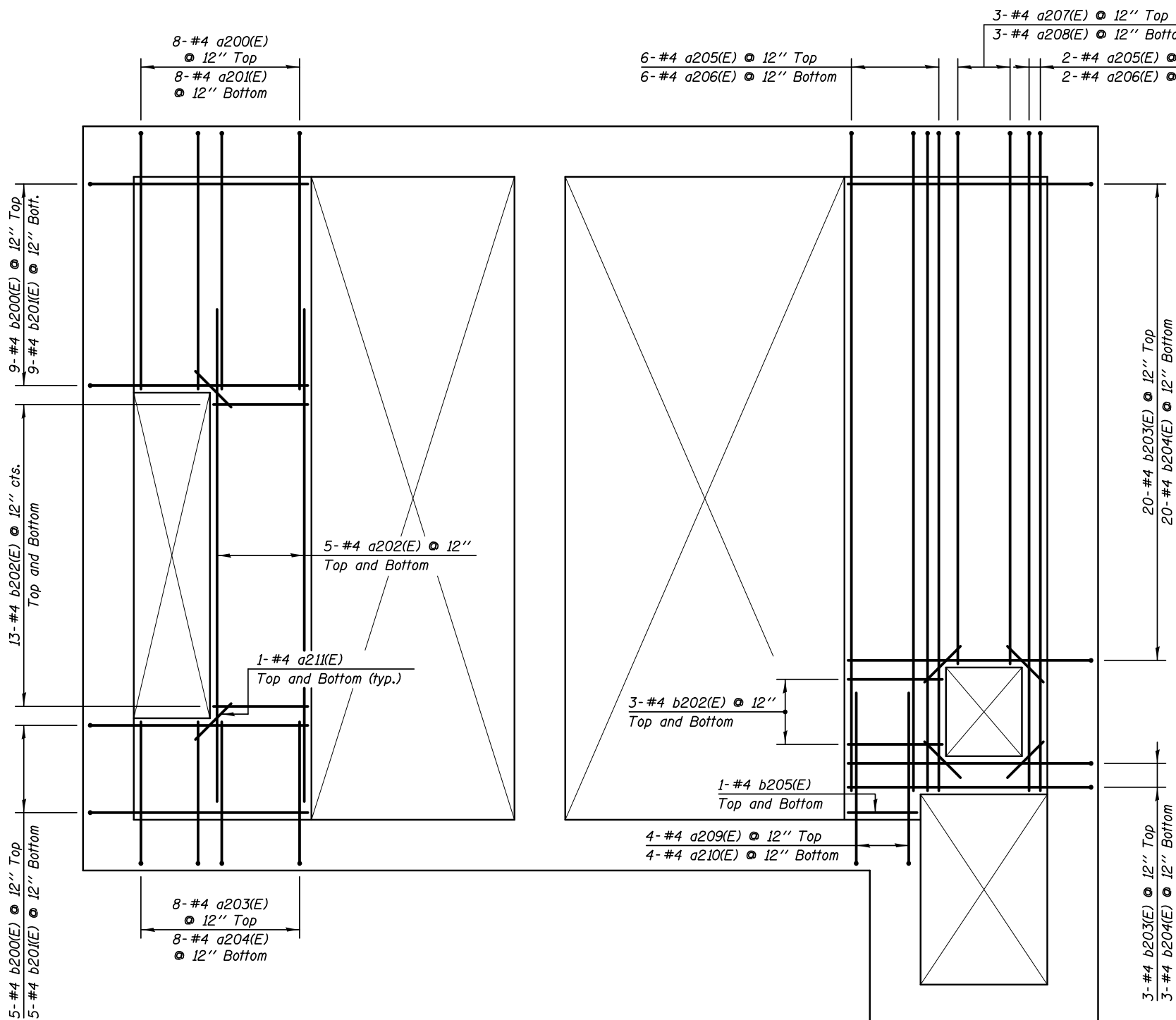
BAR	A
a200(E)	10'-2"
a203(E)	5'-8"
a205(E)	25'-0"
a207(E)	20'-6"
a209(E)	7'-0"
b200(E)	8'-8"
b203(E)	9'-8"

BARS a200(E), a203(E), a205(E), a207(E), a209(E), b200(E) & b203(E)



BARS b210(E) & b211(E)

*Drill and set into foundation wall according to Article 509.06 of the Standard Specifications. Min embedment shall be 1'-0". Cost included in the cost of "Concrete Structures".



REINFORCEMENT PLAN - EL 684.00

REINFORCEMENT PLAN - INFLOW BAFFLE



KNIGHT
Engineers & Architects

DESIGNED - WPM	REVISIONS
CHECKED - TB	REVISIONS
DRAWN - TB	REVISIONS
CHECKED - WPM	REVISIONS

STATE OF ILLINOIS
DEPARTMENT OF TRANSPORTATION

REINFORCEMENT DETAILS - FLOOR SLAB EL 684.00
PUMP STATION 47

F.A.P. RTE.	SECTION	COUNTY	TOTAL SHEETS	SHEET NO.
338/IL 59	2011-035-I	DUPAGE	181	90
CONTRACT NO. 60P41			ILLINOIS FED. AID PROJECT	

SHEET NO. SA-15 OF 34 SHEETS