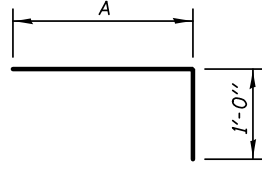


BILL OF MATERIAL

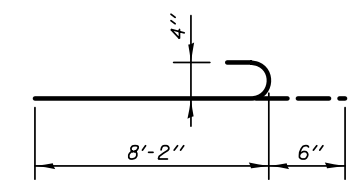
BAR	NO.	SIZE	LENGTH	SHAPE
a300(E)	8	#4	11'-2"	
a301(E)	8	#4	10'-2"	
a302(E)	20	#4	18'-6"	
a303(E)	8	#4	6'-8"	
a304(E)	8	#4	5'-8"	
a305(E)	8	#4	7'-8"	
a306(E)	8	#4	6'-8"	
a307(E)	5	#4	8'-8"	
a308(E)	5	#4	8'-2"	
a309(E)	3	#4	10'-4"	
a310(E)	3	#4	9'-4"	
a311(E)	8	#4	2'-0"	
b300(E)	28	#4	9'-8"	
b301(E)	30	#4	8'-8"	
b302(E)	52	#4	3'-8"	
Reinforcement Bars, Epoxy Coated			LB	1100

A DIMENSIONS

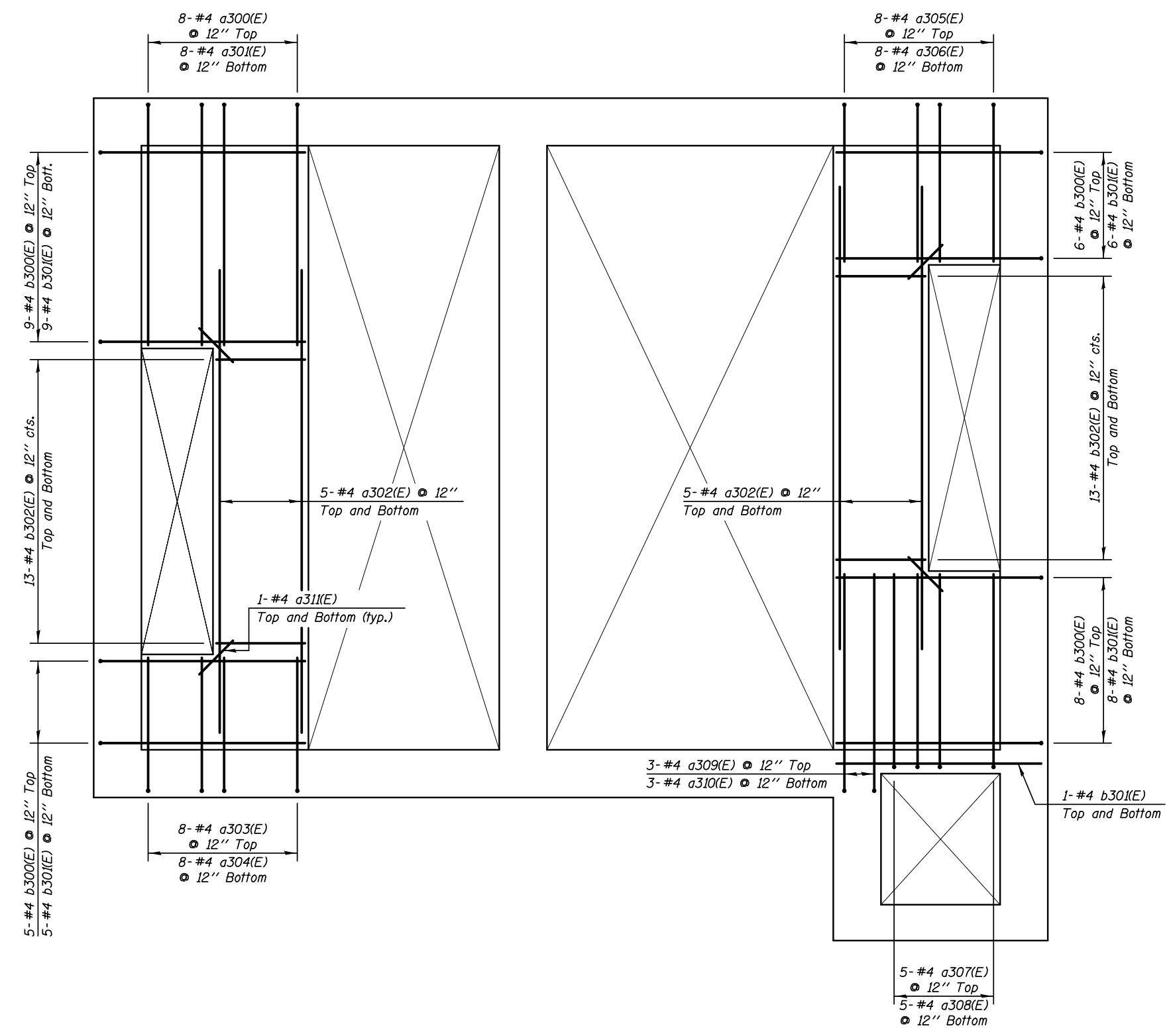


BAR	A
a300(E)	10'-2"
a303(E)	5'-8"
a305(E)	6'-8"
a309(E)	9'-4"
b300(E)	8'-8"

BARS a300(E), a303(E), a305(E), a309(E) & b300(E)



BAR a307(E)



REINFORCEMENT PLAN - EL 692.75



KNIGHT
Engineers & Architects

DESIGNED - WPM	REVISIONS
CHECKED - TB	REVISIONS
DRAWN - TB	REVISIONS
CHECKED - WPM	REVISIONS
SCALE - NONE	
DATE - 3/22/2012	

STATE OF ILLINOIS
DEPARTMENT OF TRANSPORTATION

REINFORCEMENT DETAILS - FLOOR SLAB EL 692.75
PUMP STATION 47

F.A.P. RTE.	SECTION	COUNTY	TOTAL SHEETS	SHEET NO.
338/IL 59	2011-035-I	DUPAGE	181	91
CONTRACT NO. 60P41			ILLINOIS FED. AID PROJECT	