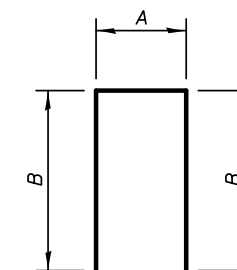


BILL OF MATERIAL

BAR	NO.	SIZE	LENGTH	SHAPE
h1200(E)	64	#6	14'-6"	
h1201(E)	16	#4	31'-0"	
h1202(E)	8	#4	9'-7"	
h1203(E)	27	#4	13'-7"	
h1204(E)	32	#4	4'-2"	
h1205(E)	9	#4	2'-10"	
h1206(E)	8	#4	10'-0"	
h1207(E)	8	#4	4'-4"	
v1200(E)	16	#6	16'-9"	
v1201(E)	90	#4	11'-2"	
Reinforcement Bars, Epoxy Coated			LB	3280

Work this sheet with sheet SA-32.

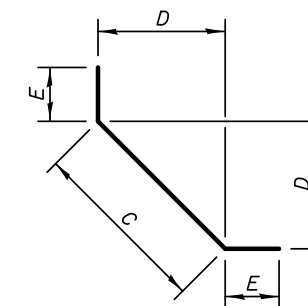
A & B DIMENSIONS



BAR	A	B
h1200(E)	1'-0"	6'-9"
h1202(E)	7"	4'-6"
h1203(E)	7"	6'-6"

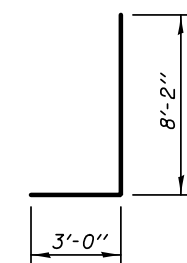
BARS h1200(E), h1202(E) & h1203(E)

C, D & E DIMENSIONS

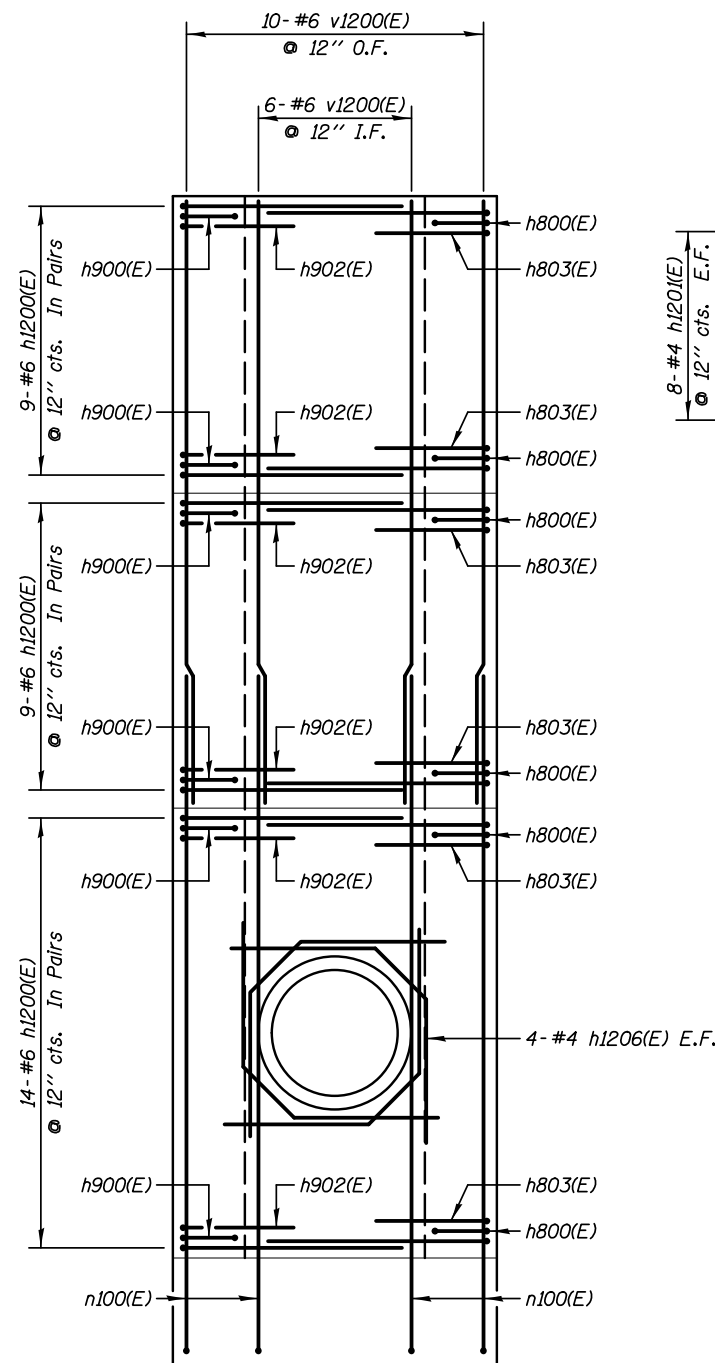


BAR	C	D	E
h1204(E)	3'-2"	2'-2"	6"
h1205(E)	1'-10"	1'-3 1/2"	6"
h1206(E)	2'-0"	1'-5"	4'-0"
h1207(E)	10"	7"	1'-9"

BARS h1204(E), h1205(E), h1206(E) & h1207(E)

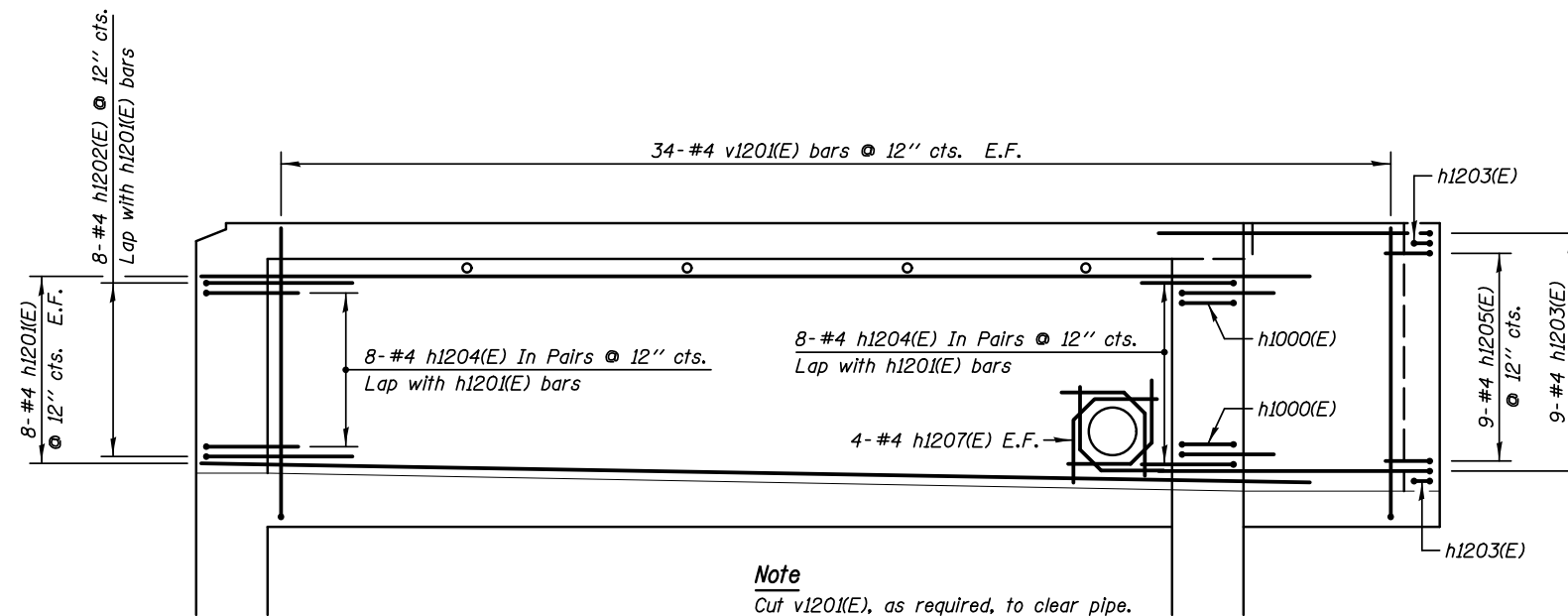


BAR v1201(E)



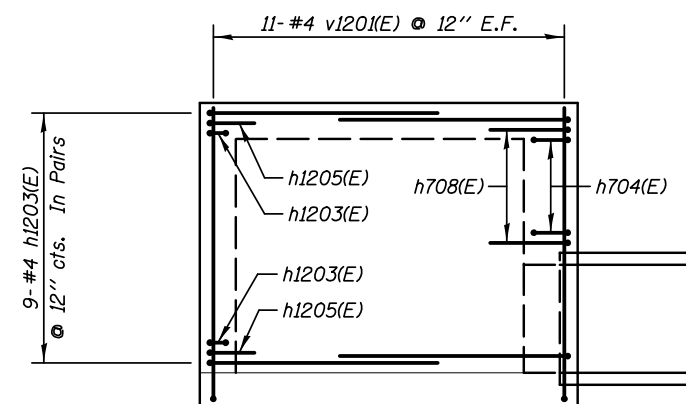
Note
Cut n100(E), as required, to clear pipe.

ELEVATION 7



Note
Cut v1201(E), as required, to clear pipe.

ELEVATION 8



ELEVATION 9

KNIGHT
Engineers & Architects

DESIGNED - WPM
CHECKED - TB
SCALE - NONE
DATE - 3/22/2012

DRAWN - TB
CHECKED - WPM

REVISED -
REVISED -
REVISED -
REVISED -

STATE OF ILLINOIS
DEPARTMENT OF TRANSPORTATION

REINFORCEMENT DETAILS - ELEVATIONS
PUMP STATION 47

SHEET NO. SA-31 OF 34 SHEETS

F.A.P. RTE.	SECTION	COUNTY	TOTAL SHEETS	SHEET NO.
338/IL 59	2011-035-I	DUPAGE	181	106
CONTRACT NO. 60P41			ILLINOIS FED. AID PROJECT	