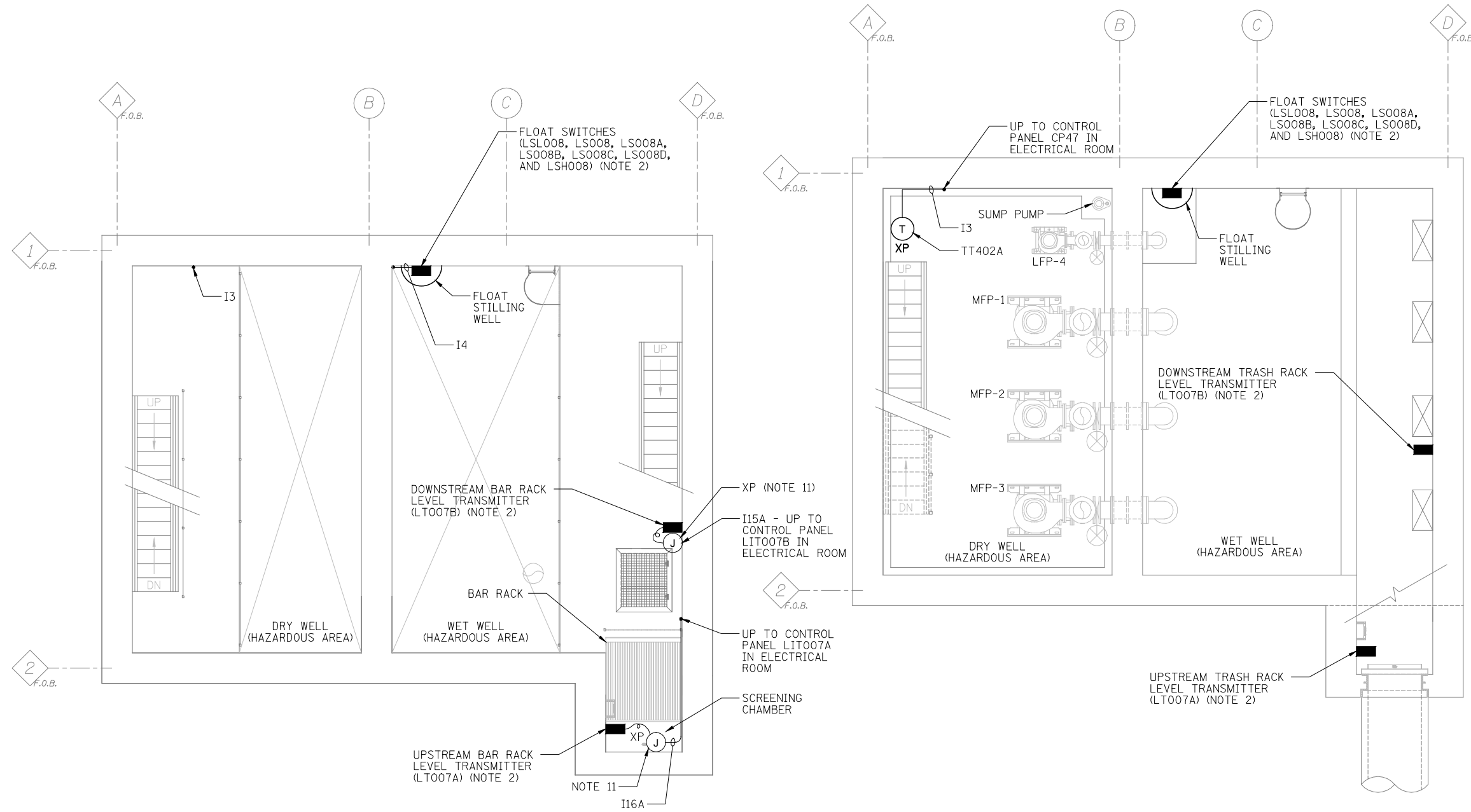


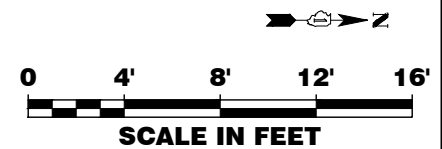
NOTES:

- SEE SHEETS GI-1 AND GI-2 FOR INSTRUMENTATION SYMBOL LIST, ABBREVIATIONS, AND GENERAL NOTES.
- REFER TO MECHANICAL DRAWING M3 FOR ADDITIONAL DETAILS.
- PROVIDE EXPLOSION-PROOF SEAL-OFF FITTINGS ON ALL CONDUIT EXITING CLASSIFIED OR RATED LOCATIONS. FITTINGS SHALL BE INSTALLED IN THE CLASSIFIED OR RATED LOCATION.
- ALL EQUIPMENT INSTALLED IN DRY WELL, WET WELL, AND DISCHARGE CHAMBER SHALL BE RATED FOR CLASS 1, DIVISION 2 EXPLOSION-PROOF ENVIRONMENT.
- INTRINSICALLY SAFE WIRING SHALL BE SEGREGATED FROM ALL OTHER TYPES OF WIRING. INTRINSICALLY SAFE WIRING SHALL BE INSTALLED IN A CONDUIT ONLY WITH OTHER INTRINSICALLY SAFE CIRCUITS IN PANELS AND EQUIPMENT. INTRINSICALLY SAFE CIRCUIT WIRING SHALL HAVE A MINIMUM OF 3 INCHES OF CLEARANCE, OR A GROUNDED METAL OR INSULATING PARTITION, BETWEEN THE INTRINSICALLY SAFE AND OTHER TYPES OF WIRING. SEE NEC ARTICLE 504.
- SHIELDED AND UNSHIELDED CONDUCTORS SHALL BE RUN IN CONDUIT. SHIELDED CONDUCTORS SHALL NOT BE COMBINED WITH UNSHIELDED CONDUCTORS IN ANY CONDUIT. NEITHER SHIELDED NOR UNSHIELDED CONDUCTORS SHALL BE INCLUDED IN THE SAME CONDUIT AS POWER WIRING.
- SHIELDED AND UNSHIELDED CONDUCTORS SHALL HAVE A MINIMUM OF 6" SEPARATION BETWEEN CONDUIT ON PARALLEL RUNS.
- SHIELDED AND UNSHIELDED CONDUCTORS SHALL BE SEPARATED BY STEEL BARRIERS IN ALL COMBINED SIGNAL JUNCTION BOXES AND INSTRUMENT TERMINATION CABINETS.
- CONDUCTORS SHALL NOT BE SPLICED EXCEPT AT TERMINALS OR AS DESIGNATED BY THE ENGINEER.
- THE CONDUIT PLANS ARE DIAGRAMMATIC IN NATURE, AND DO NOT SHOW A COMPLETE CONDUIT SYSTEM. PROVIDE PULL BOXES AND OTHER CONDUIT SYSTEM COMPONENTS AS REQUIRED FOR INSTALLATION AND TO MEET NEC.
- JUNCTION BOX TO BE MOUNTED AT ELEVATION 689.00 ABOVE TRANSDUCER PIPE HOUSING.



1 INTERMEDIATE FLOOR PLAN (-2) - EL: 684.00
SCALE: 1/4" = 1'-0"

2 WELL LEVEL FLOOR PLAN (-3) - DRY EL: 673.00, WET EL: 671.50
SCALE: 1/4" = 1'-0"



IP-2

DESIGNED	DKC	REVISED	- 4-19-2012
CHECKED	KMY	REVISED	-
SCALE	DRAWN	REVISED	-
DATE	03/22/2012	CHECKED	KMY
		REVISED	-

F.A.P. RTE.	SECTION	COUNTY	TOTAL SHEETS	SHEET NO.
338/IL 59	2011-035-I	DUPAGE	181	127
			CONTRACT NO. 60P41	
ILLINOIS FED. AID PROJECT				