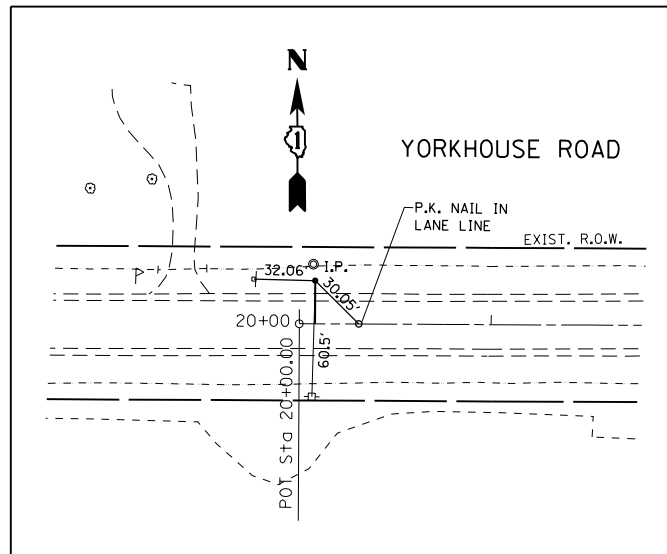
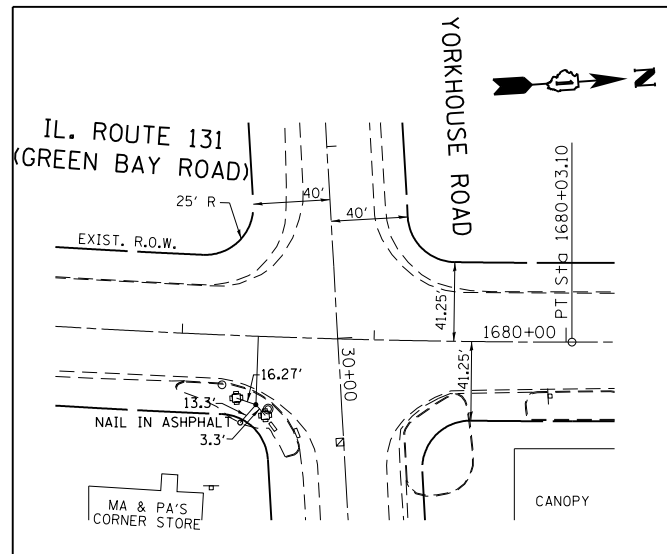


STA. 1678+81.09 IL. ROUTE 131 =  
STA. 30+00 YORKHOUSE ROAD



**CONTROL POINT #125**

IRON PIPE  
STA. 20+09.21, 22' LT.  
N 2092427.1954  
E 1106162.8260



**CONTROL POINT #124**

"X" CUT ON SOUTH  
SIDE CONCRETE OF  
TRAFFIC SIGNAL MANHOLE  
STA. 1678+39.67, 35.62' RT.  
N 2092354.8673  
E 1107185.3081

ALIGNMENT COORDINATES		YORKHOUSE ROAD	
	STATION	N	E
POB	20+00.00	2092405.2473	1106153.4931
POT	40+00.23	2092394.0572	1108153.6917

**BENCHMARK CM-12**

ELEVATION 695.1885

TOP OF R.O.W. MARKER, NORTHWEST QUADRANT, YORKHOUSE RD.  
AND McAREE RD.

**BENCHMARK CM-13**

ELEVATION 675.9861

CHISELED "□" NORTH SIDE OF TRAFFIC LIGHT  
BASE, SOUTHEAST QUADRANT, YORKHOUSE RD. AND LEWIS AVE.

**BENCHMARK CM-14**

ELEVATION 647.6824

FIRE HYDRANT, YORKHOUSE RD. AND NORTH AVE.,  
NORTHEAST QUADRANT, SOUTHERLY FLANGE BOLT.

**BENCHMARK NGS**

ELEVATION 630.612

NGS BENCHMARK (-2) R-273

FILE NAME = D:\59311-sh1-ATB.dgn	USER NAME = guillaumejp	DESIGNED -	REVISED -
		DRAWN -	REVISED -
	PLOT SCALE = 200.0000' / in.	CHECKED -	REVISED -
	PLOT DATE = 4/3/2012	DATE -	REVISED -

STATE OF ILLINOIS  
DEPARTMENT OF TRANSPORTATION

<b>ALIGNMENT, TIES AND BENCHMARKS</b>			
<b>IL. ROUTE 131 (GREEN BAY ROAD) AT YORKHOUSE ROAD</b>			
SCALE: 1" = 100'	SHEET NO.	OF SHEETS	STA. 1668+00.00 TO STA. 1683+00.00

F.A.U. RTE.	SECTION	COUNTY	TOTAL SHEETS	SHEET NO.
2711	27-N-2	LAKE	53	13
CONTRACT NO. 60P63				
ILLINOIS FED. AID PROJECT				