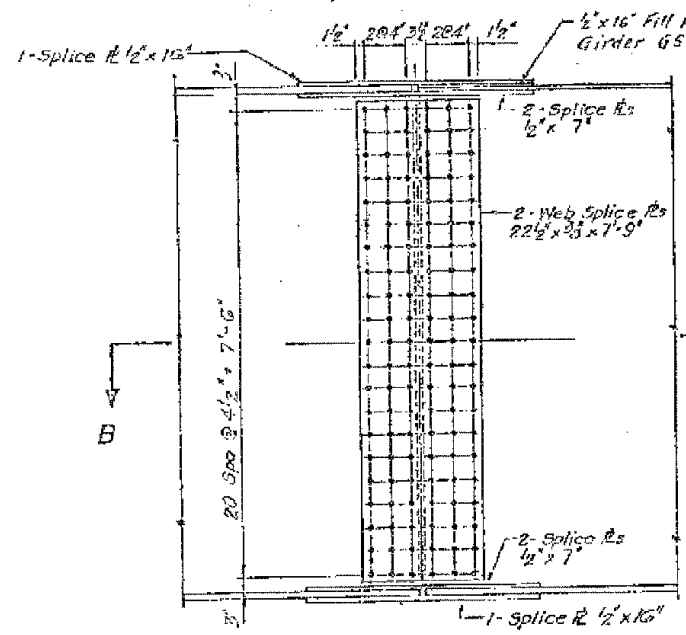
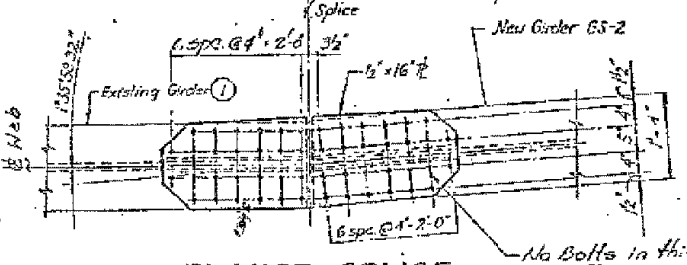
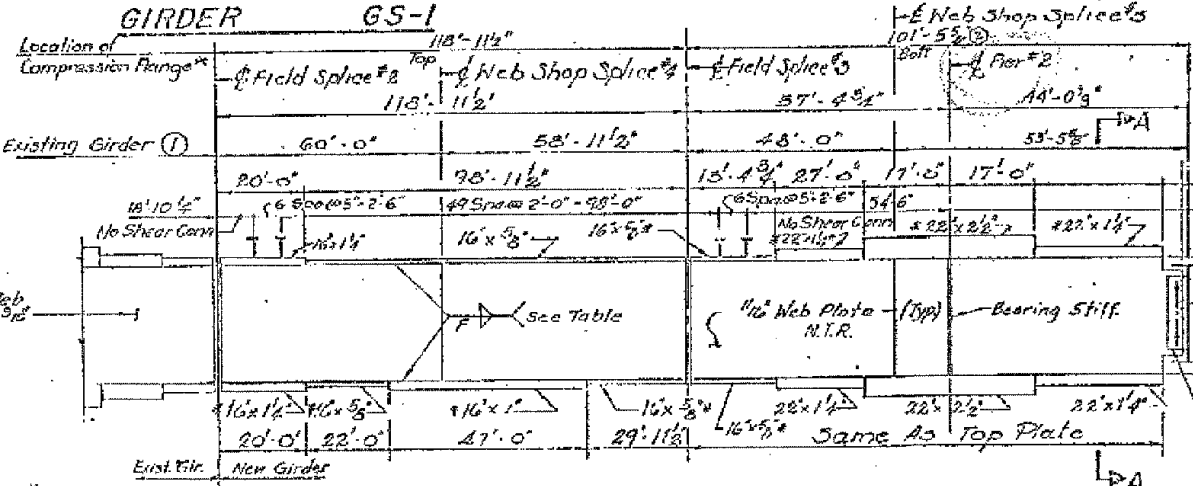


**FLANGE SPLICE**  
GS-1, SPLICE #1  
GS-2, SPLICE #3



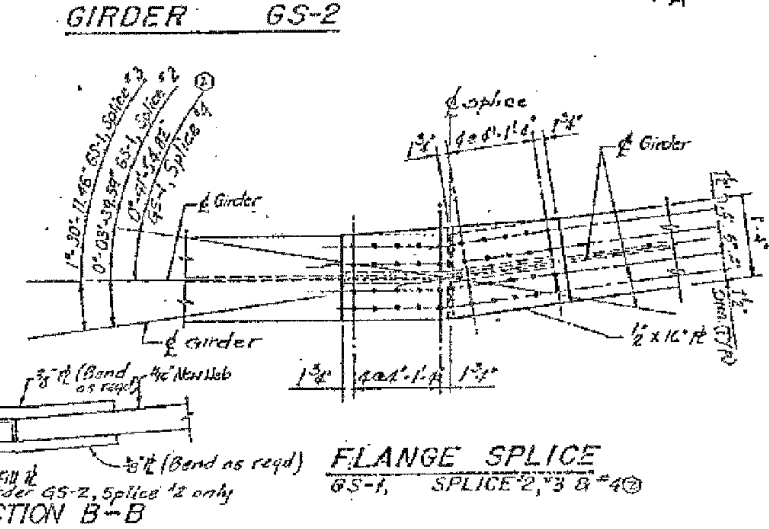
**TYPICAL FIELD SPLICE ELEVATION**  
(N.T.R. ALL SPLICE PLATES)



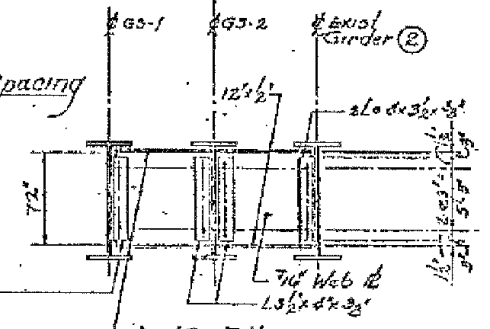
**FLANGE SPLICE**  
GIRDER GS-2, SPLICE #2

FLANGE R THICKNESS	WELD SIZE	"F"
1/2" thru 3/4"	3/8"	1/2"
3/4" thru 1 1/4"	3/8"	3/8"
1 1/4" thru 2 1/4"	3/8"	3/8"
2 1/4" thru 3"	1/2"	1/2"

Note: Extend larger fillet weld 1'-0" beyond flange splice.



**SECTION B-B**



**SECTION A-A**