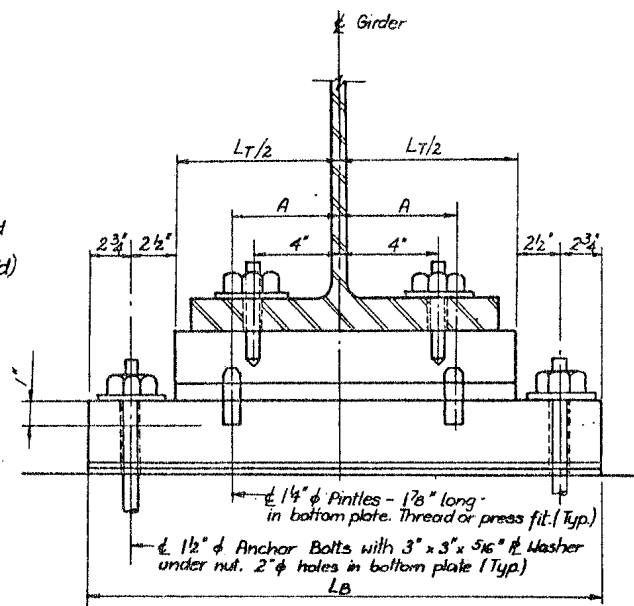
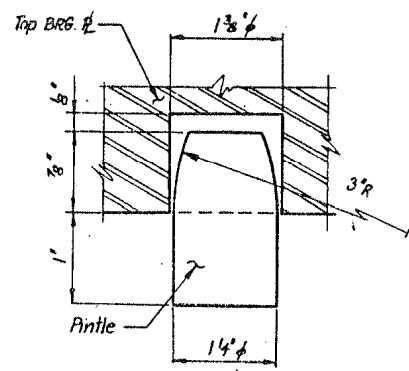


ELEVATION



SECTION A-A



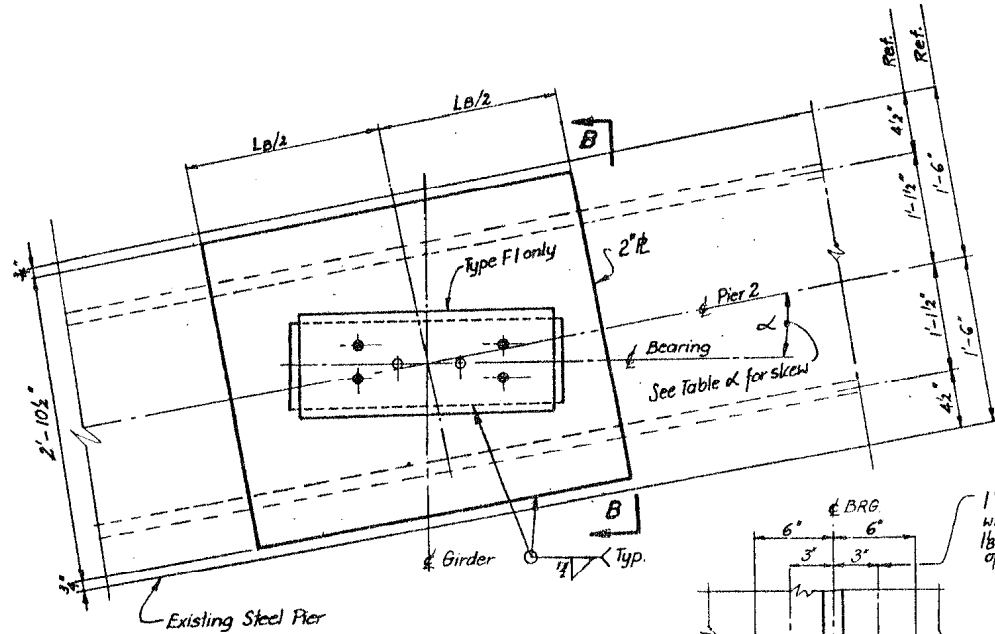
PINTLE DETAIL

FIXED BEARING SCHEDULE

STRUCTURE NO.	PIER LOCATION	GIRDER NO.	BRG. TYPE	NO. REQ'D.	T _T "	L _T "	T _B "	L _B "	A"	H"	REMARKS
016-1116	2	GN2	F5	1	4 3/8	22 1/2	2 1/2	26	5	8 1/8	N
	2	GN3	F5	1	2 1/2	22 1/2	2 1/2	26	5	7	N
	2	GN4	F6	1	-	22 1/2	-	26	5	5 3/16	N
	3(S)	GN1 - GN4	F1	4	9	16 1/2	1 1/2	27	5	4 5/8	N
		B - 15	F1	3	3	16 1/2	1 1/2	27	5	4 5/8	R

Note: Assume remaining fixed bearings are type F1.

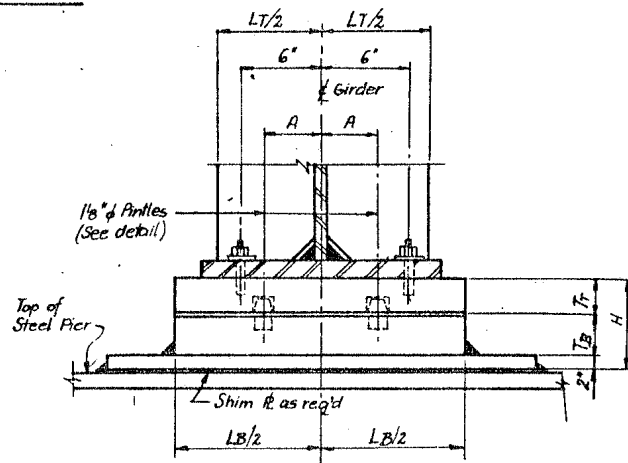
FIXED BEARING - TYPE F1



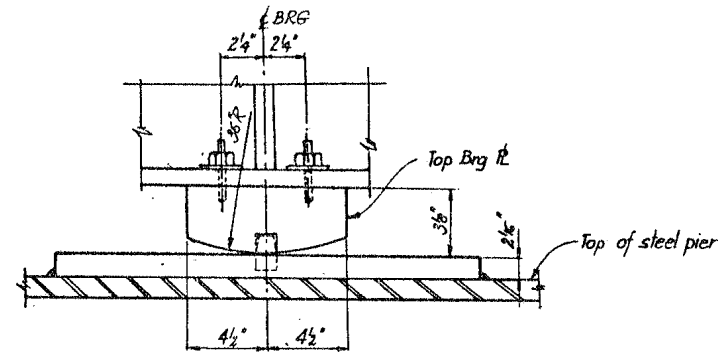
PLAN

TABLE alpha - SKEW ANGLE

GIRDER NO.	alpha
GN-2	18°-41'-20"
GN-3	19°-59'-54"
GN-4	21°-17'-11"

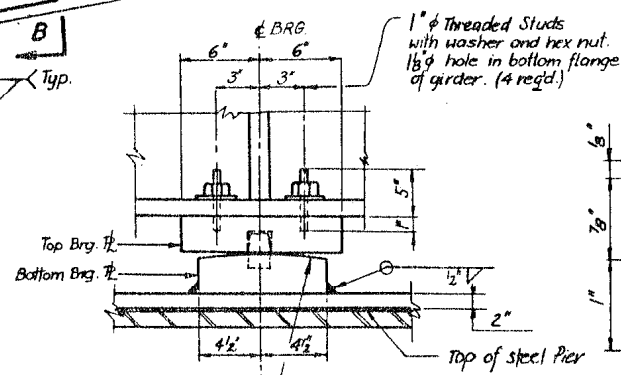


ELEVATION



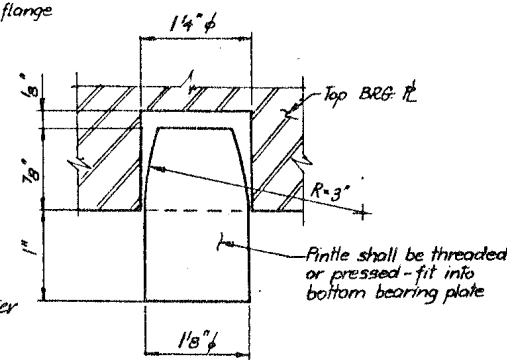
SECTION B-B

FIXED BEARING - TYPE F6



SECTION B-B

FIXED BEARING - TYPE F5



PINTLE DETAIL

Type F1 and F6

Remarks: N - New bearings for Roadway Widening.
R - Replacement bearings.